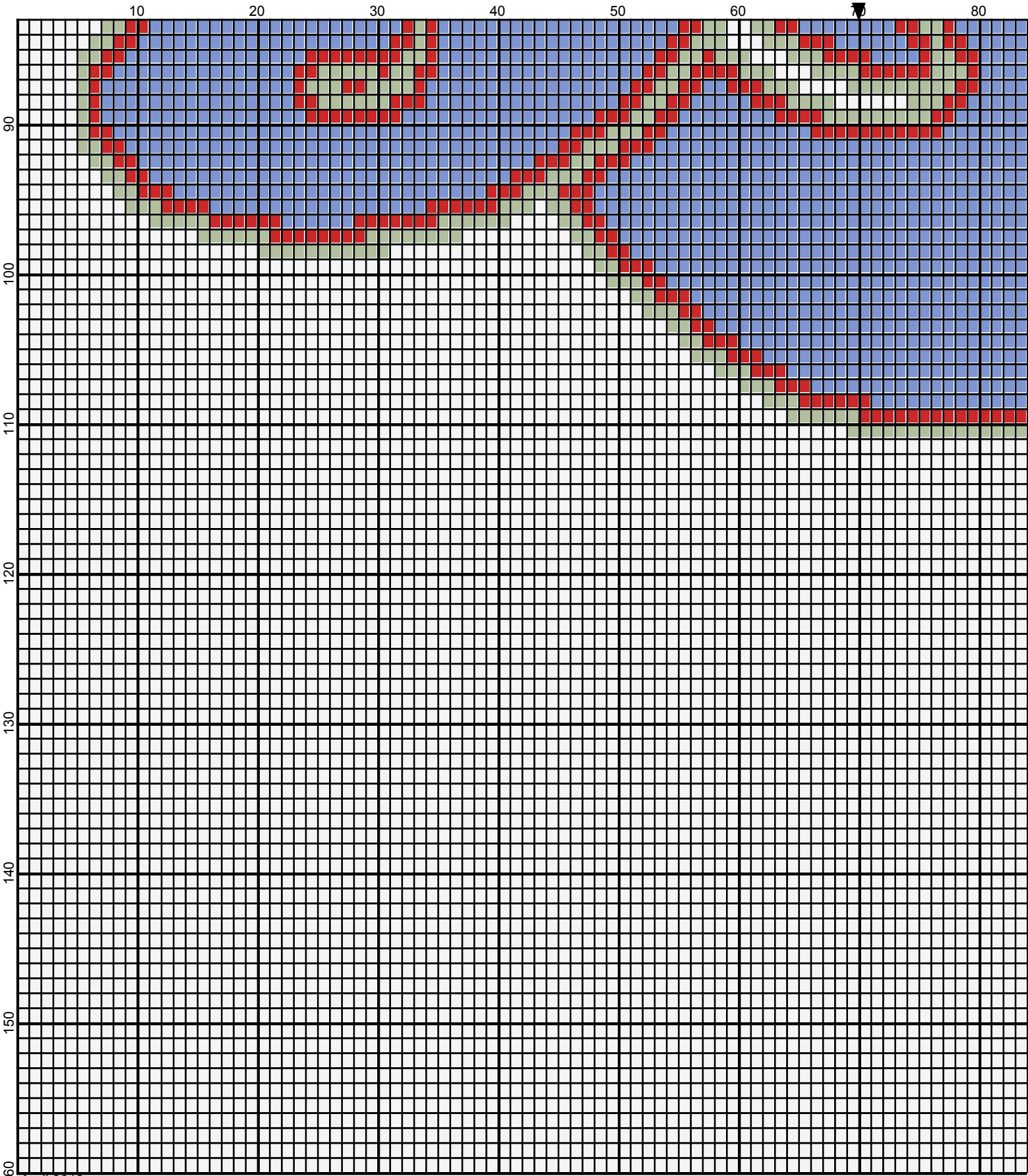
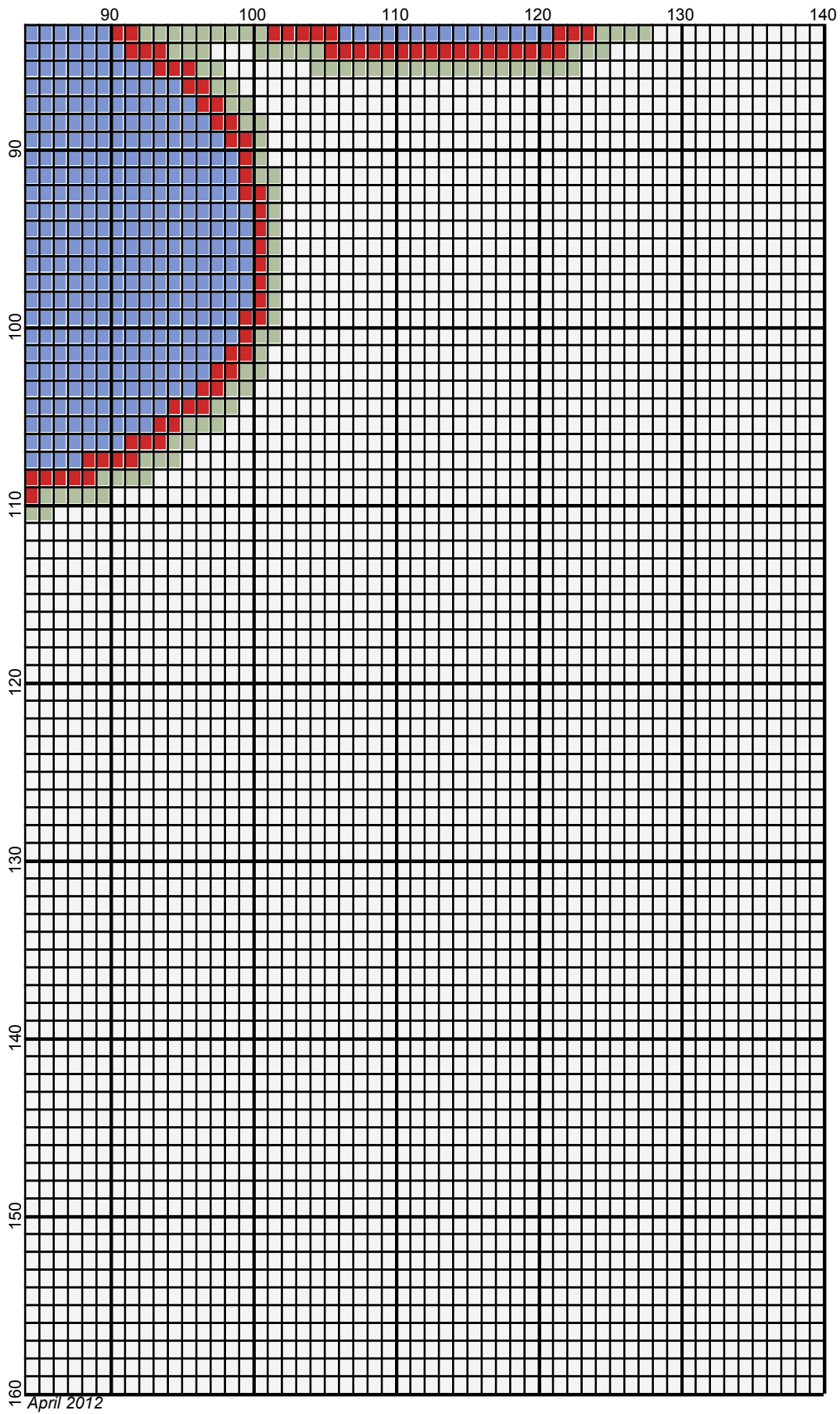


April 2012



April 2012



yes

Author: Donna Hammell
Copyright: April 2012
Website: www.donnascrochetshoppe.com
Grid Size: 140W x 160H
Design Area: 14.00" x 20.00" (140 x 160 stitches)

Legend:

	[2] SSE	SSE390	Hot Red		[2] SSE	SSE661	Frosty Green
	[2] SSE	SSW885	Delft Blue		[2] SSE	SSE311	White

Instructions for using the graph.

GAUGE= 5 STS = 1"
4 ROWS = 1"

I USED SIZE "H" AFGHAN HOOK,USE WHATEVER SIZE GIVES YOU THE CORRECT GAUGE. CAN BE DONE IN AFGHAN STITCH OR SINGLE CROCHET.

EACH SQUARE ON THE GRAPH REPRESENTS 1 STITCH. FOR SINGLE CROCHET READ THE CHART FROM RIGHT TO LEFT, AND THEN LEFT TO RIGHT. IF USING AFGHAN STITCH ALWAYS READ FROM THE RIGHT.

TO START: CHAIN ONE MORE STITCH THAN GRAPH.

IF YOU NEED TO MAKE THE PIECE WIDER ADD AN EVEN NUMBER OF STITCHES TO BOTH SIDES, AND ADD ROWS TO MAKE IT LONGER. THE DESIGN IS CENTERED, SO ADD STITCHES EVENLY TO BOTH SIDES.

ESTIMATED YARN NEEDED:

WHITE:17 OUNCE

HOT RED: 2 OUNCES

DELFT BLUE: 4 OUNCES

FROSTY GREEN: 1 OUNCE