





Legend:

- RHS-254
- RHS-265
- RHS-316

virginia_tech_180x180

Author: Donna Hammell
Copyright: July 2022
Website: www.donnascrochetshoppe.com
Grid Size: 180W x 180H
Design Area: 18.00" x 22.50" (180 x 180 stitches)

Legend:

 [2] RHS 254 Pumpkin  [2] RHS 265 Redwood  [2] RHS 316 Soft White

Instructions for using the graph.

GAUGE= 5 STS = 1"
4 ROWS = 1"

I USED SIZE "H" AFGHAN HOOK,USE WHATEVER SIZE GIVES YOU THE CORRECT GAUGE. CAN BE DONE IN AFGHAN STITCH OR SINGLE CROCHET.

EACH SQUARE ON THE GRAPH REPRESENTS 1 STITCH. FOR SINGLE CROCHET READ THE CHART FROM RIGHT TO LEFT, AND THEN LEFT TO RIGHT. IF USING AFGHAN STITCH ALWAYS READ FROM THE RIGHT.

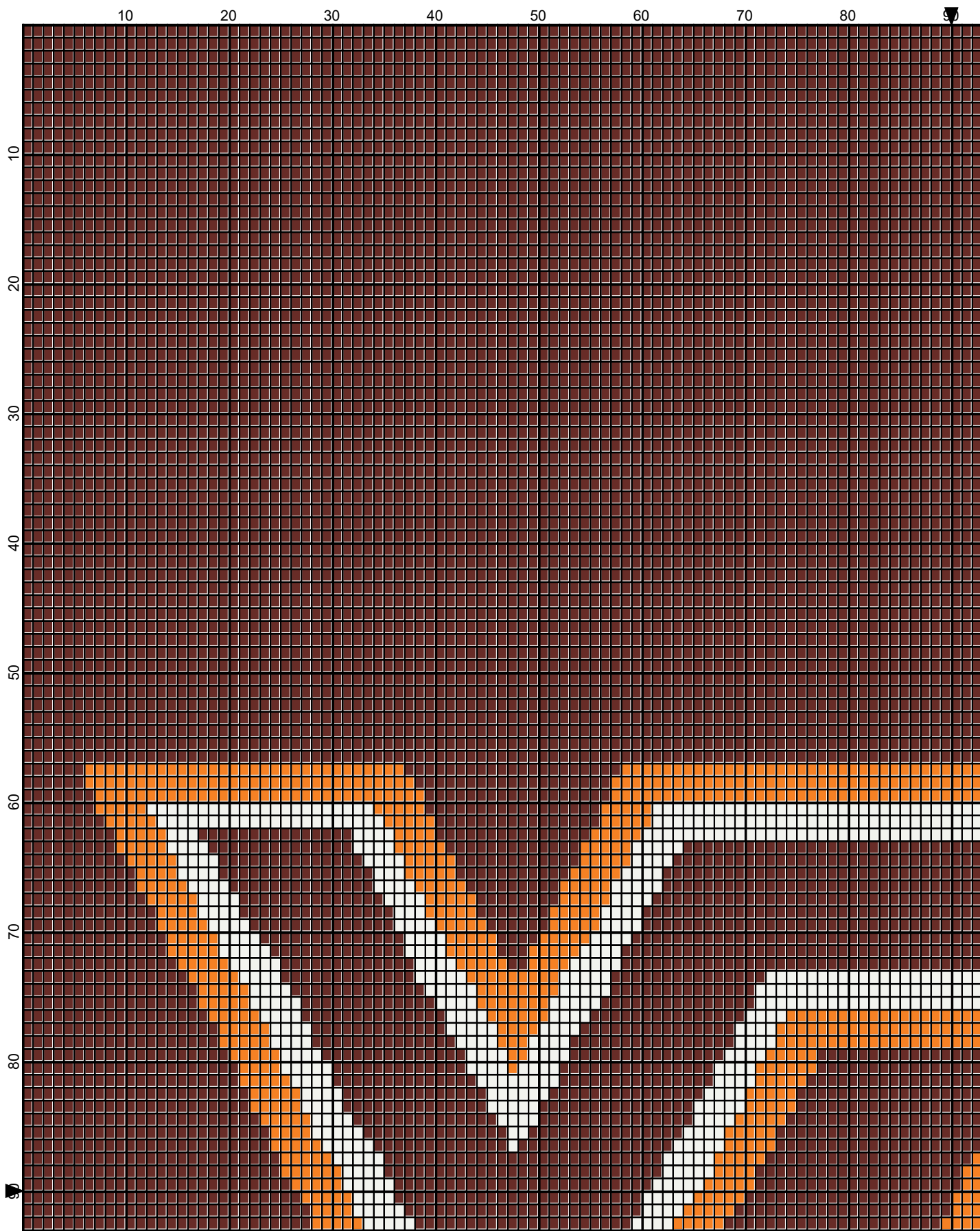
TO START: CHAIN ONE MORE STITCH THAN GRAPH.

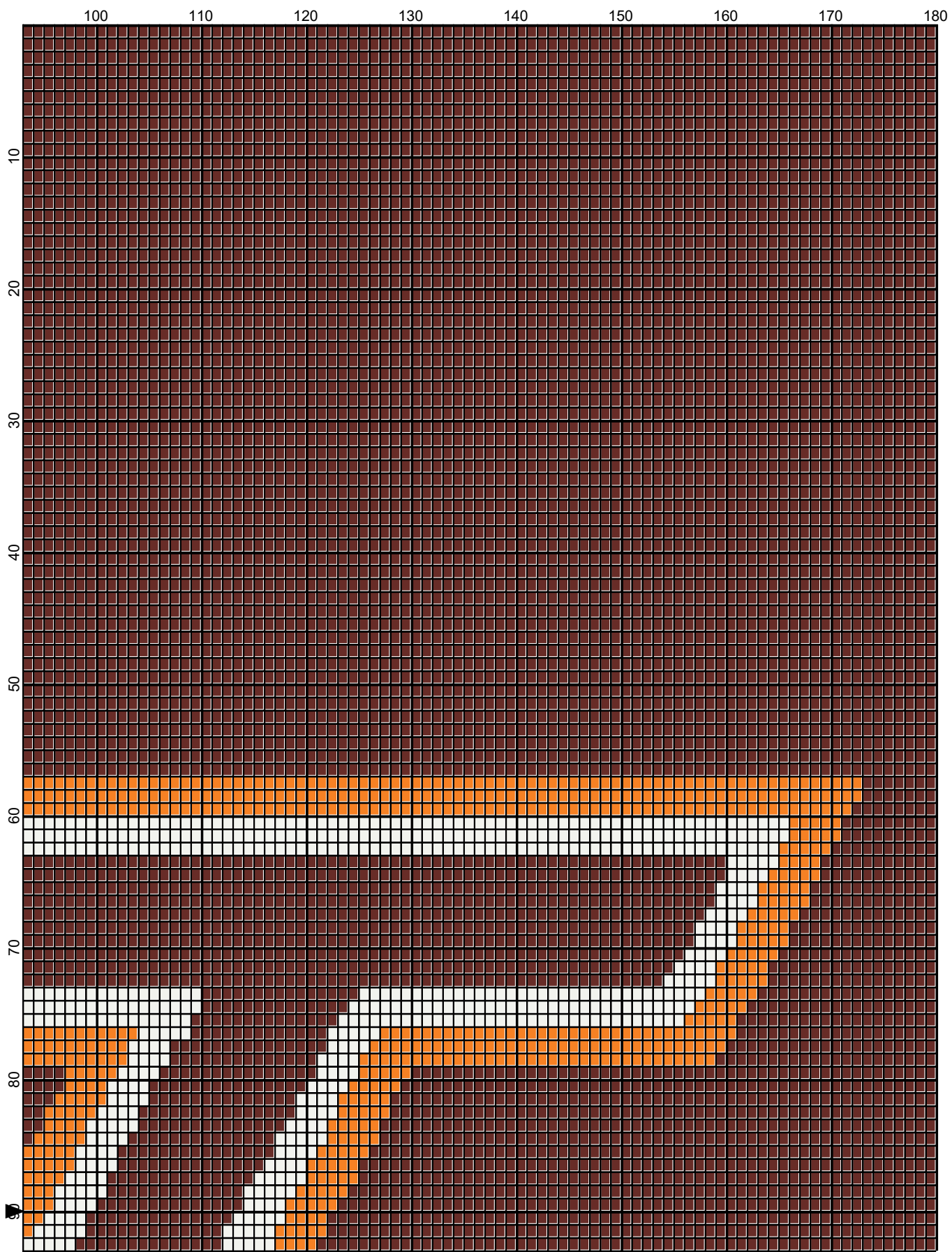
ESTIMATED YARN NEEDED:

WHITE ; 2 OUNCES/102 YDS

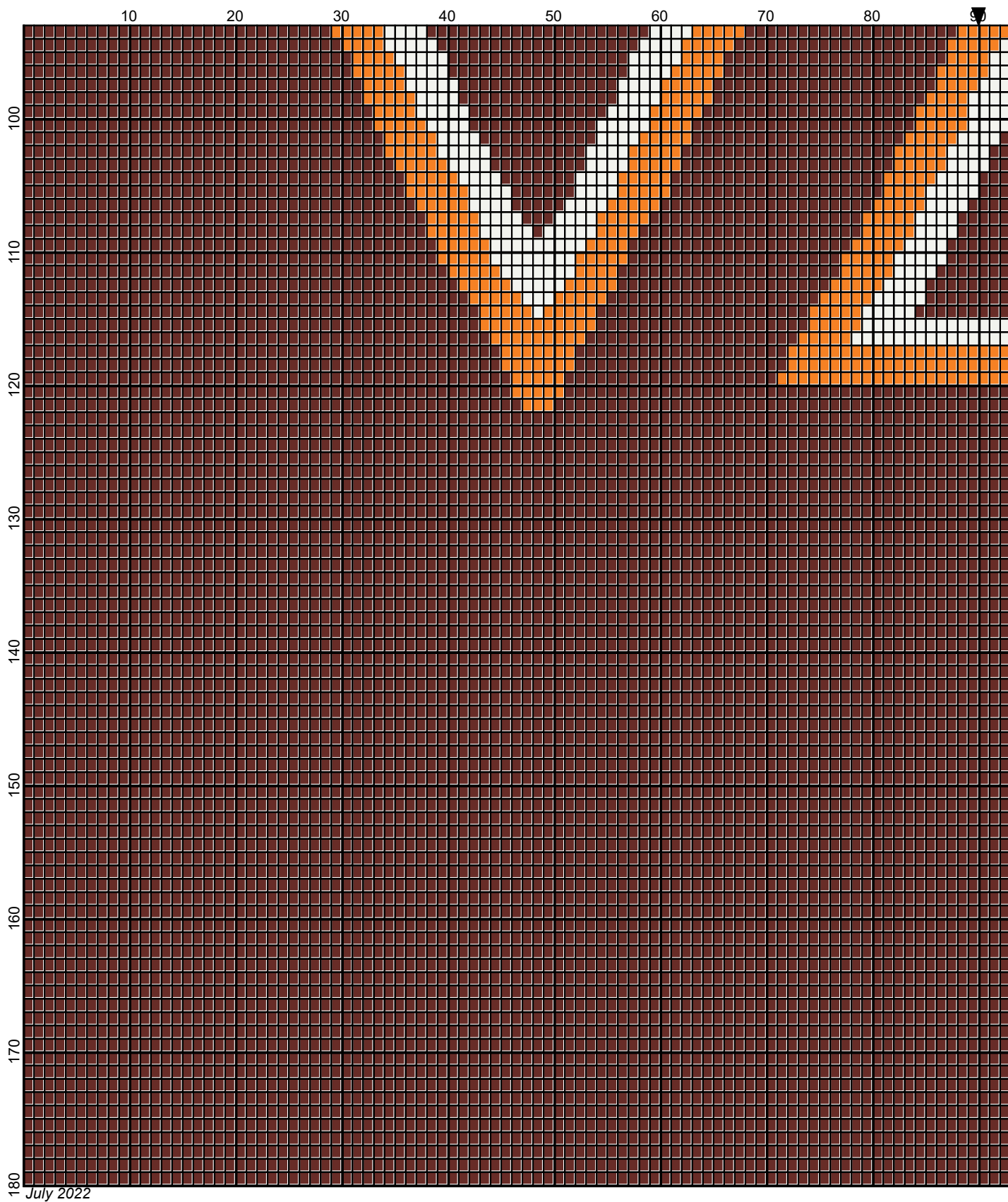
PUMPKIN: 3 OUNCES/120 YDS

REDWOOD:38 OUNCES/1890 YDS

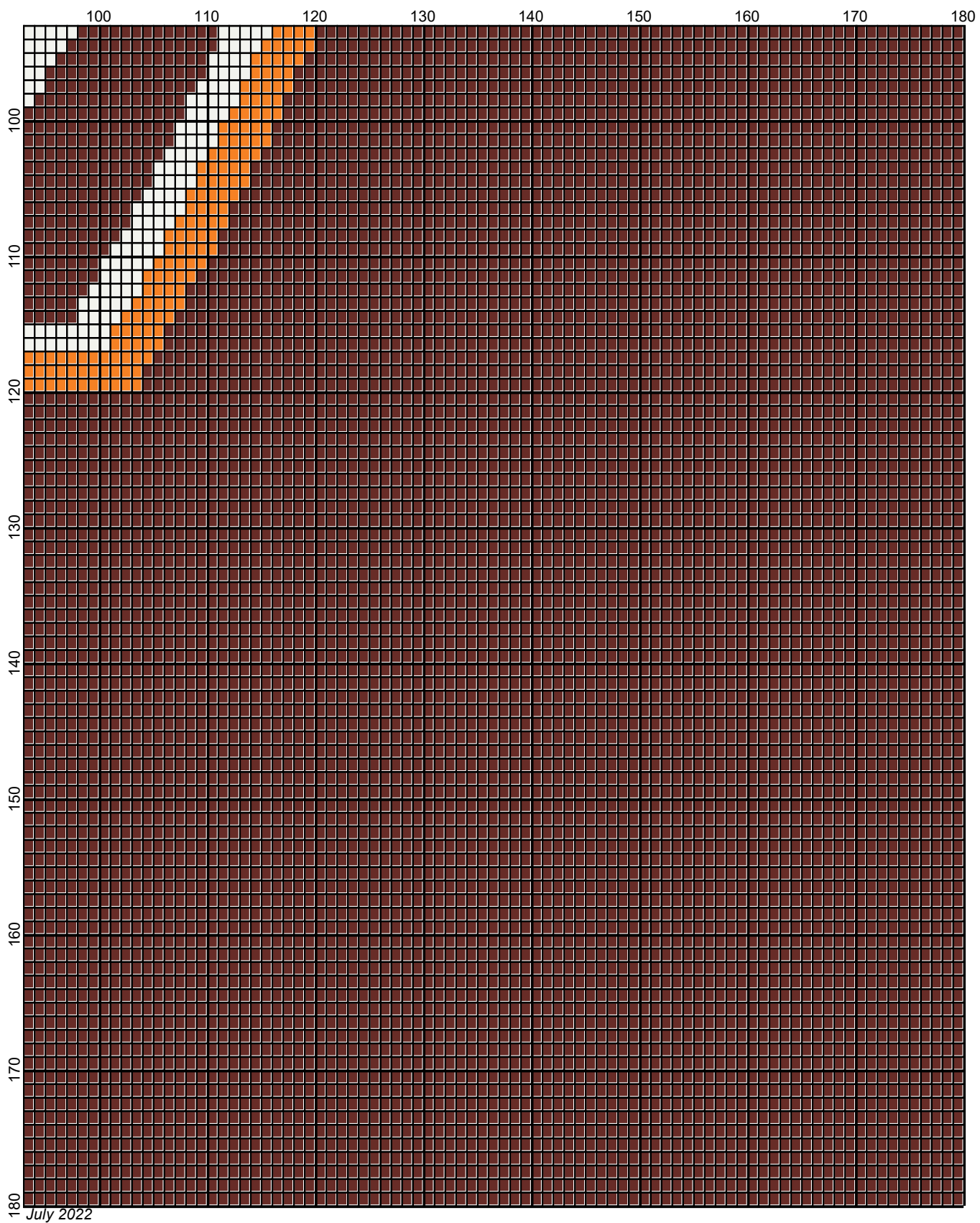




July 2022



Legend:



■ RHS-254 ■ RHS-265 □ RHS-316