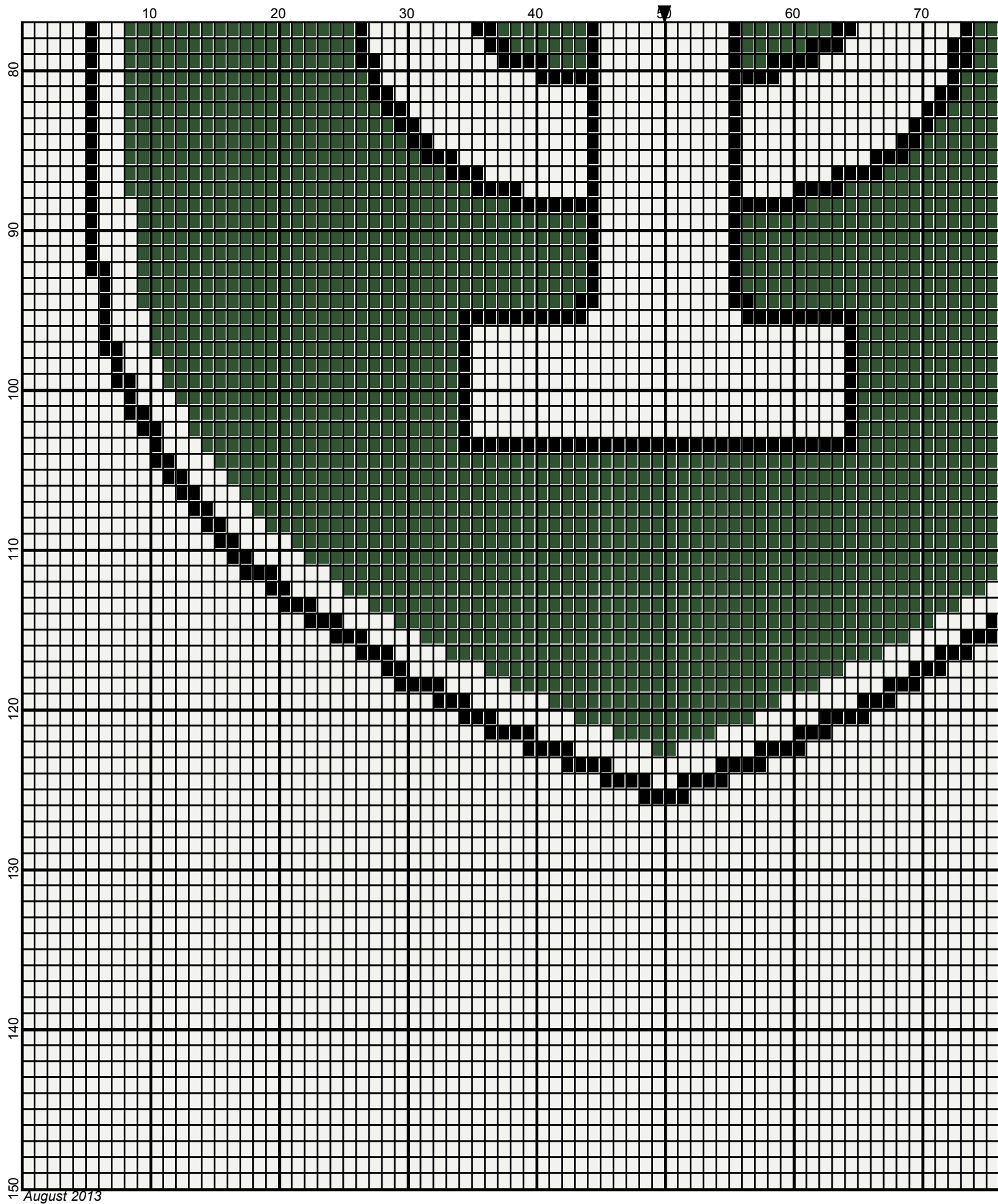
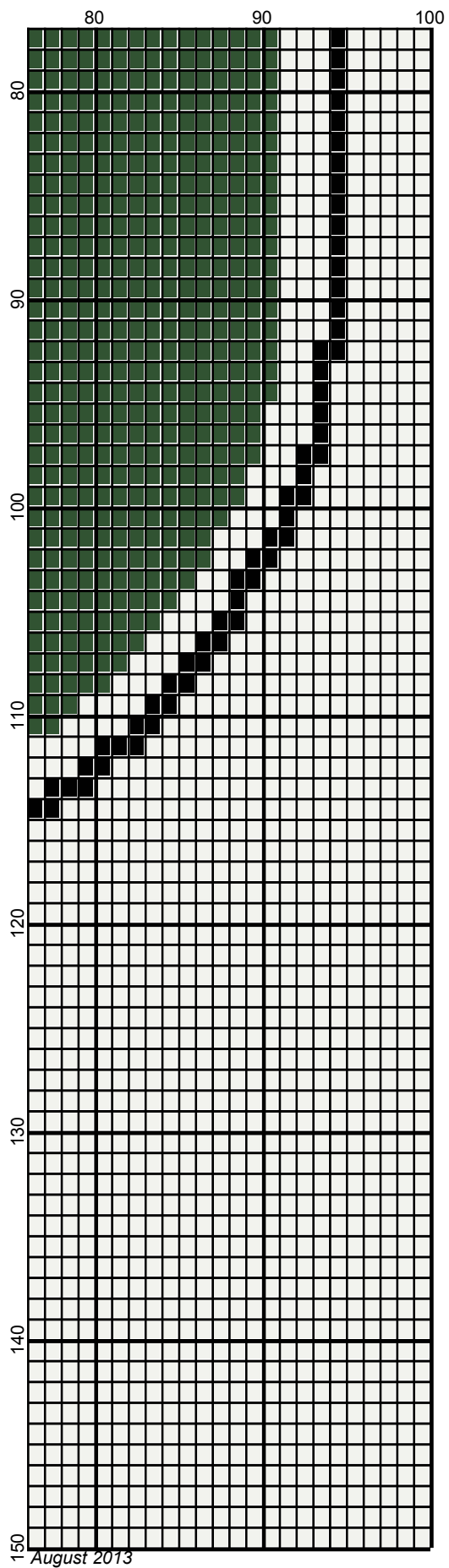


Legend:
■ RHS-389
□ RHS-316
■ RHS-312





August 2013

ut_100x150

Author: Donna Hammell
Copyright: August 2013
Website: www.donnascrochetshoppe.com
Grid Size: 100W x 150H
Design Area: 10.00" x 18.75" (100 x 150 stitches)

Legend:

■ [2] RHS 389 Hunter Green □ [2] RHS 316 Soft White ■ [2] RHS 312 Black

Instructions for using the graph.

GAUGE= 5 STS = 1"
4 ROWS = 1"

I USED SIZE "H" AFGHAN HOOK, USE WHATEVER SIZE GIVES YOU THE CORRECT GAUGE. CAN BE DONE IN AFGHAN STITCH OR SINGLE CROCHET.

EACH SQUARE ON THE GRAPH REPRESENTS 1 STITCH. FOR SINGLE CROCHET READ THE CHART FROM RIGHT TO LEFT, AND THEN LEFT TO RIGHT. IF USING AFGHAN STITCH ALWAYS READ FROM THE RIGHT.

TO START: CHAIN ONE MORE STITCH THAN GRAPH

WHITE: 11 OUNCES

GREEN: 5 OUNCES

BLACK: 1 OUNCE