

10

20

30

40

50

60

70

80

10

20

30

40

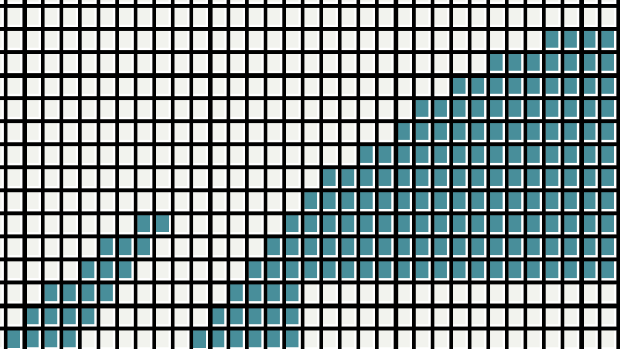
50

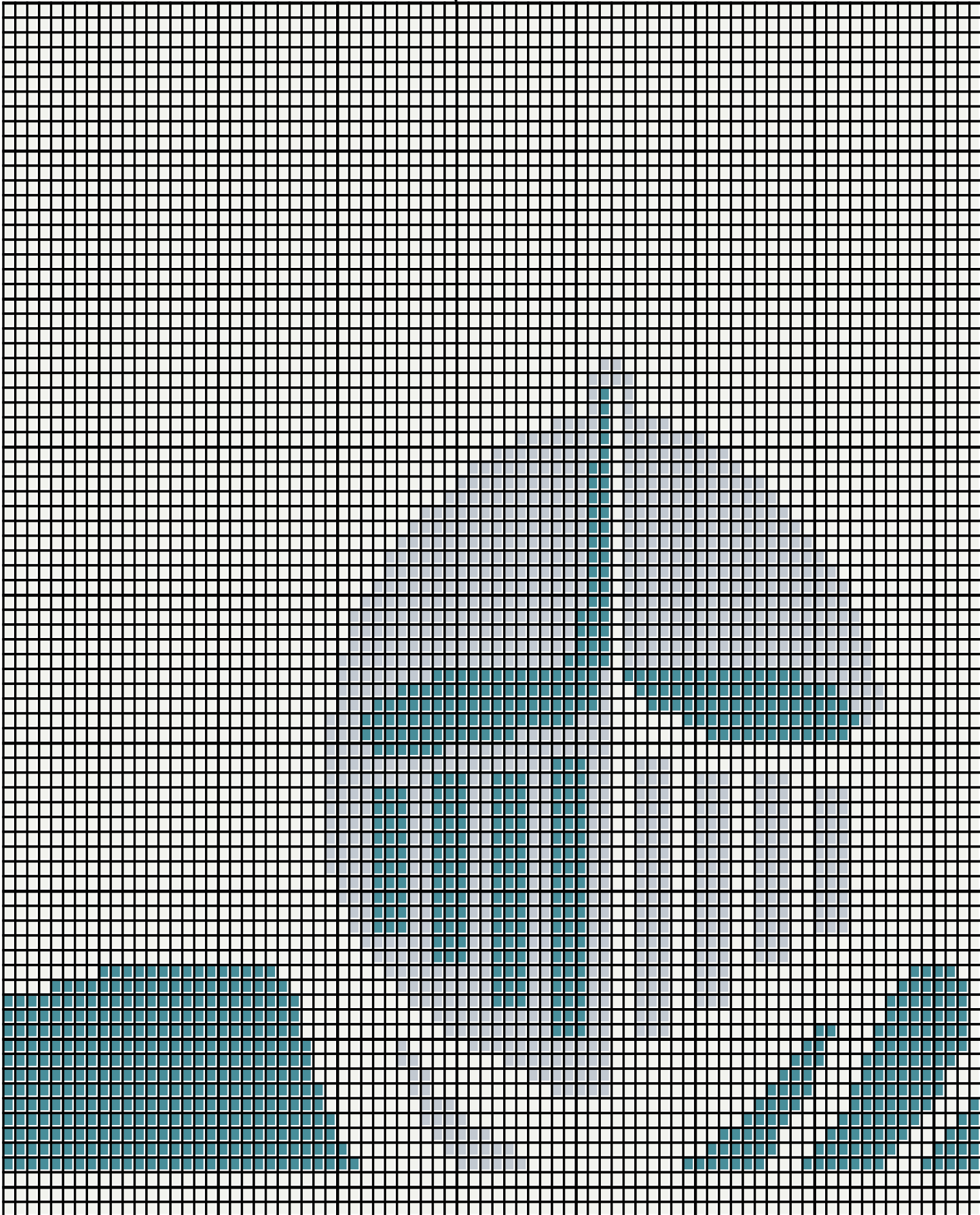
60

70

80

August 2017





170

180

190

200

210

220

230

240

10

20

30

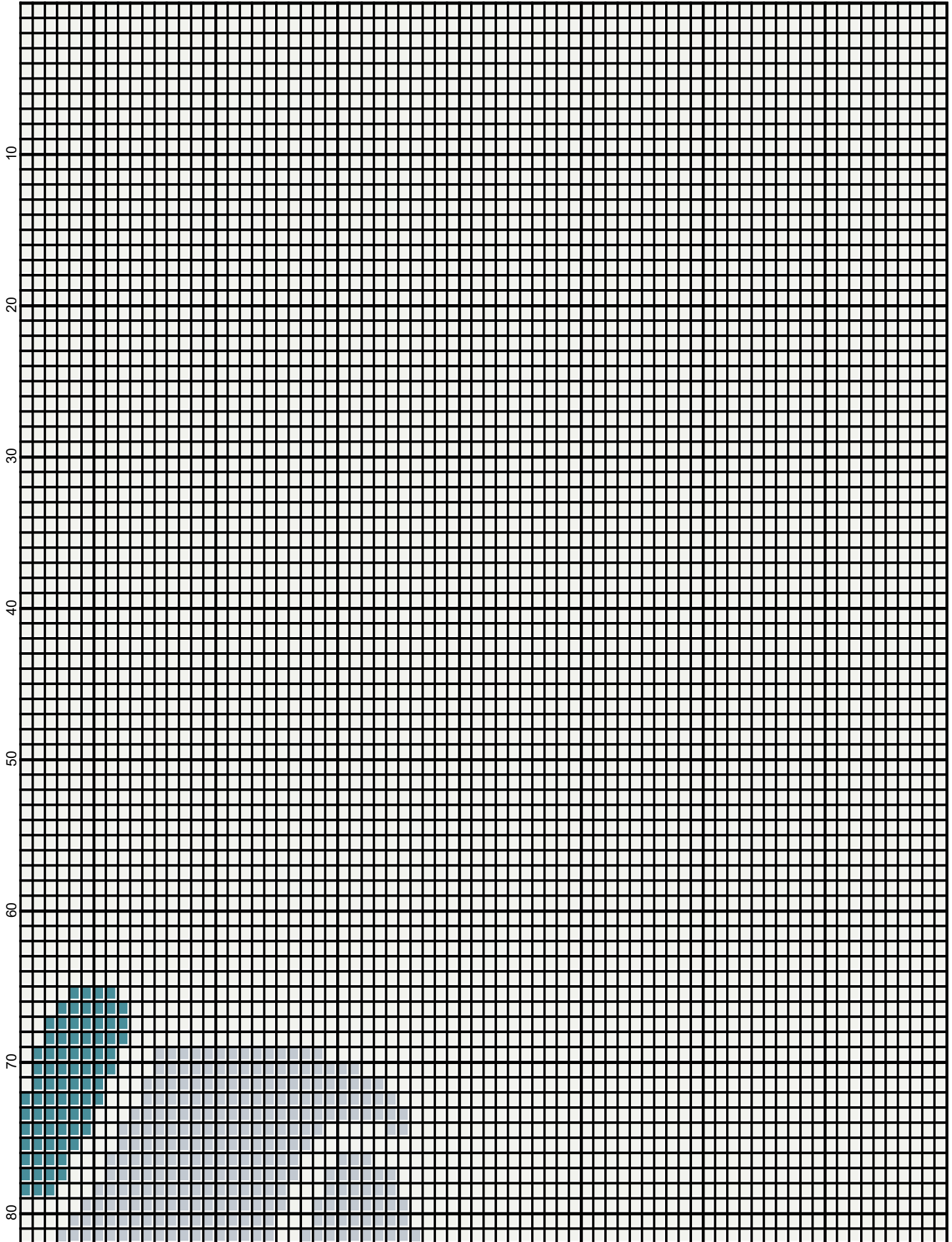
40

50

60

70

80



August 2017

10

20

30

40

50

60

70

80

90

100

110

120

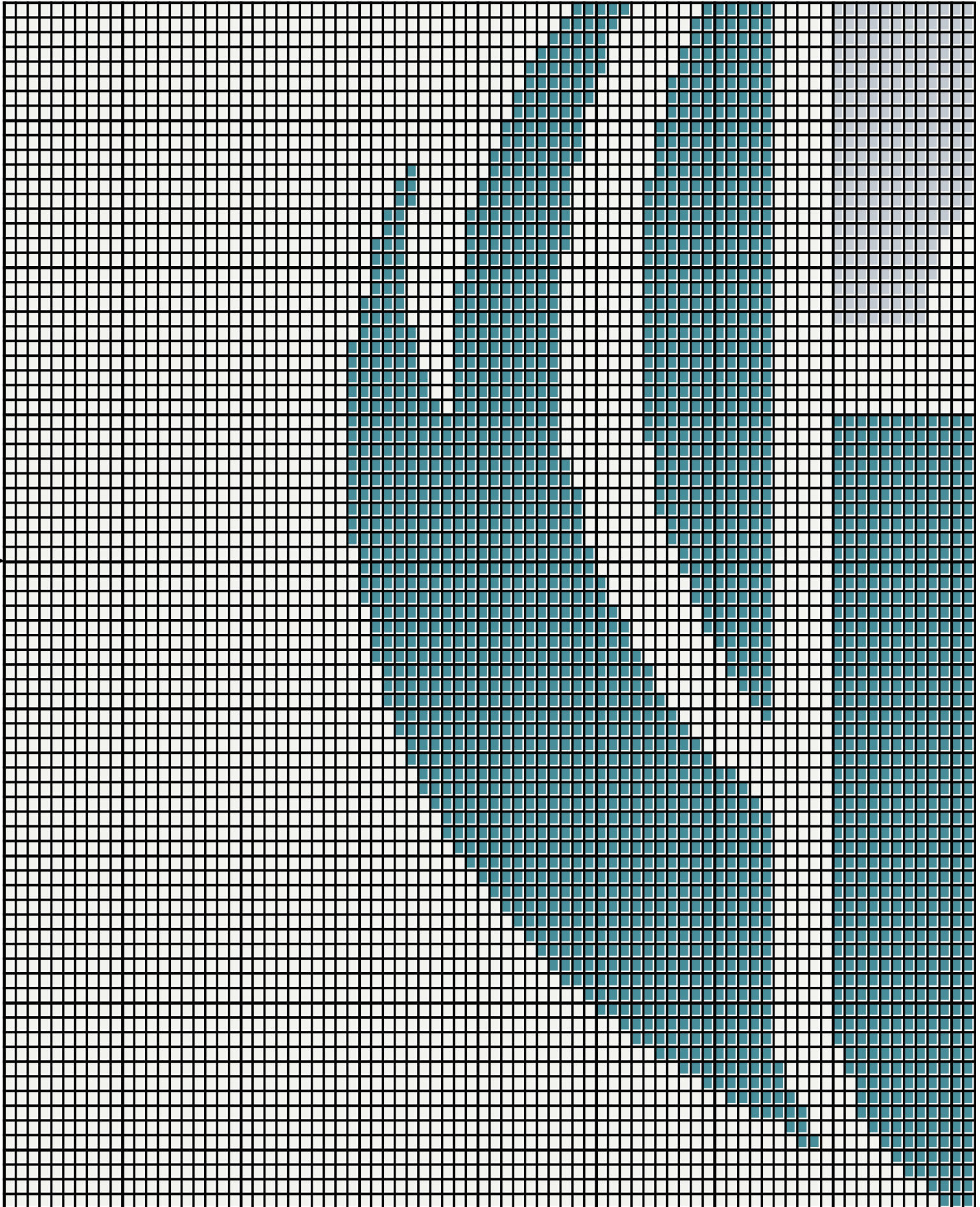
130

140

150

160

August 2017



90

100

110

120

130

140

150

160

90

100

110

120

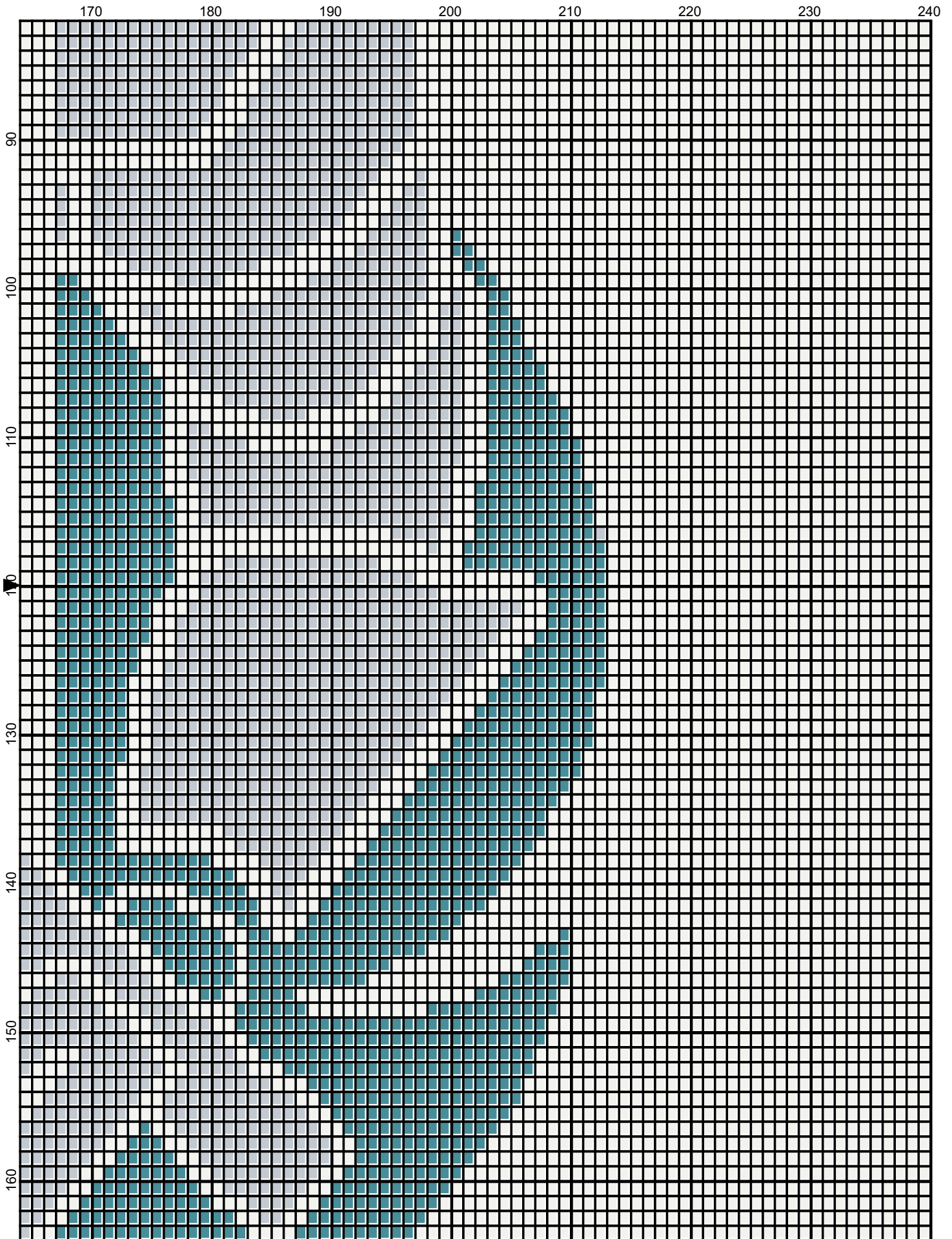
130

140

150

160

August 2017



August 2017

10

20

30

40

50

60

70

80

170

180

190

200

210

220

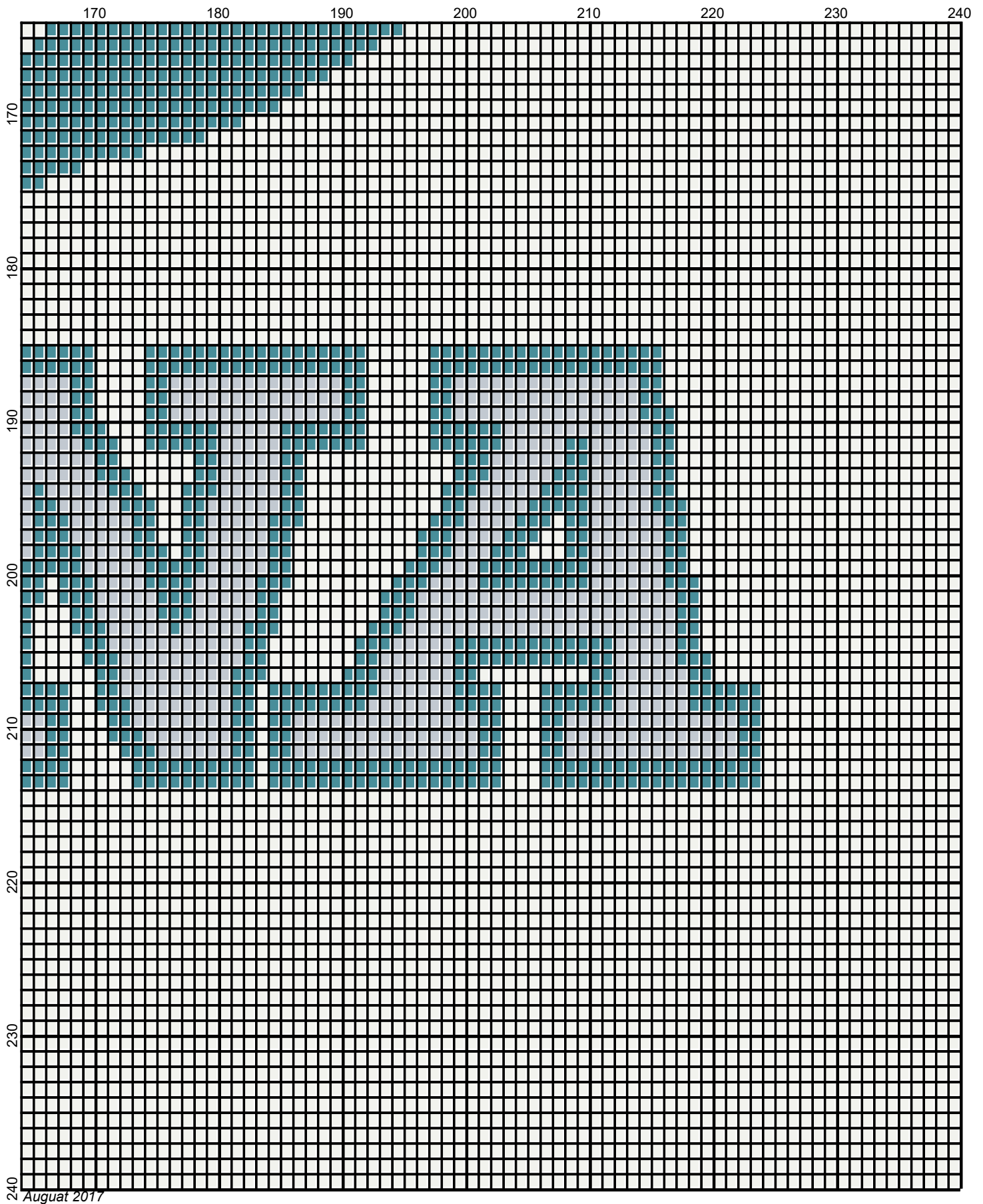
230

240

August 2017






August 2017



urbana_university_240x240

Author: Donna Hammell
Company: Donna's Crochet Shoppe
Copyright: August 2017
Website: www.donnascrochetshoppe.com
Grid Size: 240W x 240H
Design Area: 24.00" x 30.00" (240 x 240 stitches)

Legend:

 [2] RHS 3862 Jade  [2] RHS 341 Light Gray  [2] RHS 316 Soft White

Instructions for using the graph.

GAUGE= 5 STS = 1"
4 ROWS = 1"

I USED SIZE "H" AFGHAN HOOK, USE WHATEVER SIZE GIVES YOU THE CORRECT GAUGE. CAN BE DONE IN AFGHAN STITCH OR SINGLE CROCHET.

EACH SQUARE ON THE GRAPH REPRESENTS 1 STITCH. FOR SINGLE CROCHET READ THE CHART FROM RIGHT TO LEFT, AND THEN LEFT TO RIGHT. IF USING AFGHAN STITCH ALWAYS READ FROM THE RIGHT.

TO START: CHAIN ONE MORE STITCH THAN GRAPH.

IF YOU NEED TO ADD STITCHES TO MAKE THE PIECE WIDER, OR ADD ROWS TO MAKE IT LONGER. THE DESIGN IS CENTERED, SO ADD STITCHES EVENLY TO BOTH SIDES.

JADE/BLUE ; 14 OUNCES
LTGRAY: 10 OUNCES
WHITE: 52 OUNCES