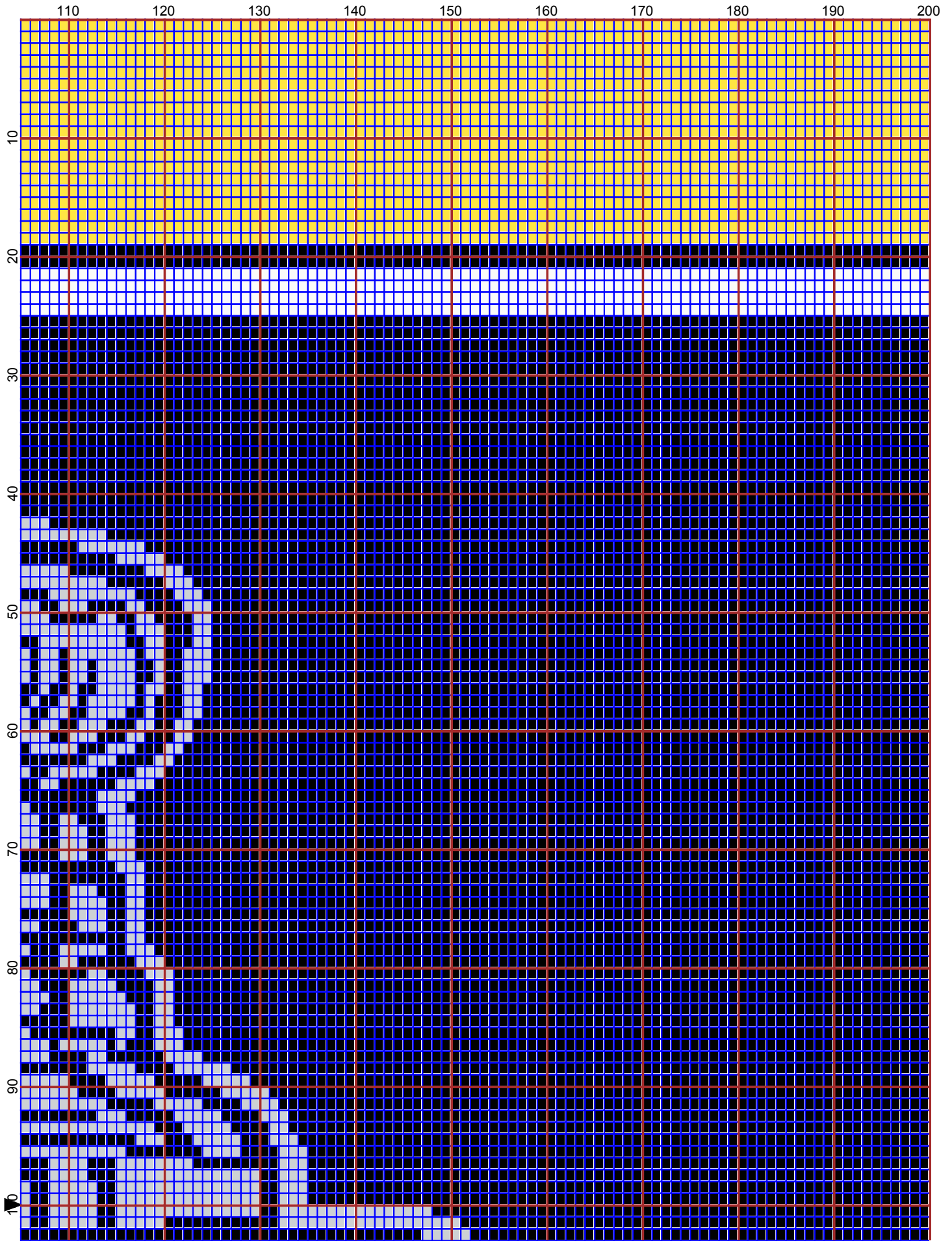
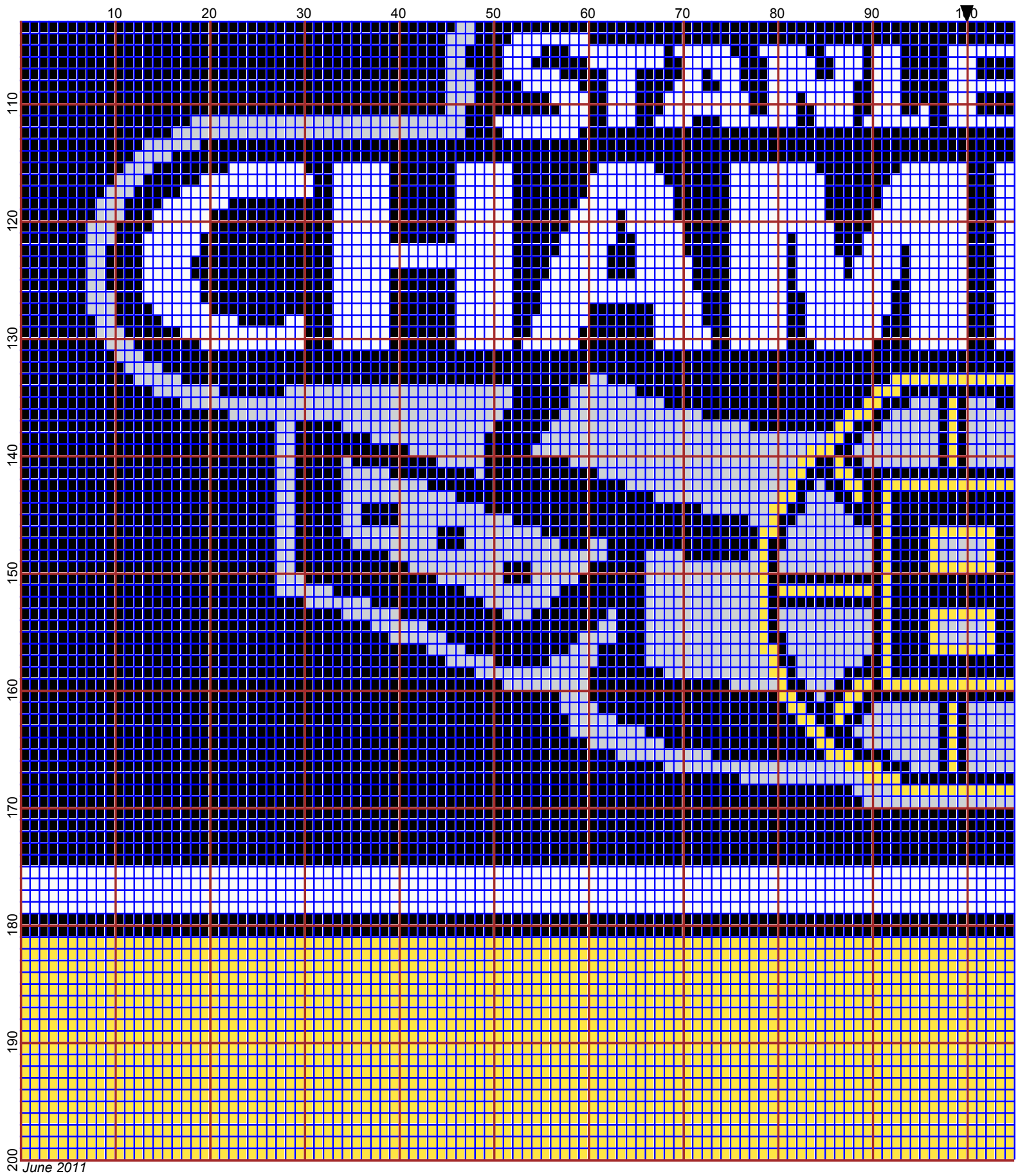


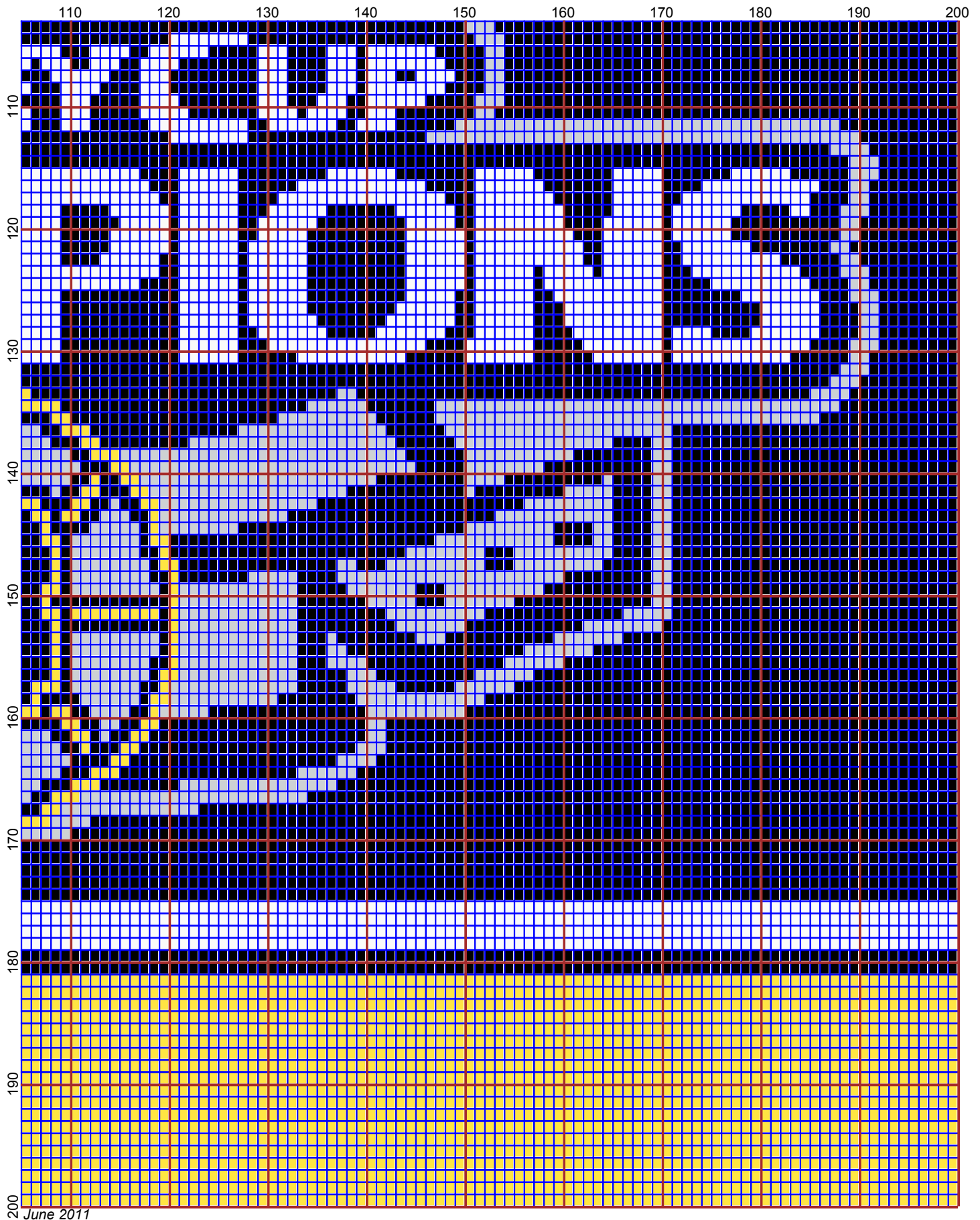
June 2011



June 2011



June 2011



June 2011

# Stanley Cup Champs 2011

---

**Author:** Donna Hammell  
**Copyright:** June 2011  
**Website:** www.donnascrochetshoppe.com  
**Grid Size:** 200W x 200H  
**Design Area:** 20.00" x 25.00" (200 x 200 stitches)

## Legend:

■ [2] 001 RH012 Black      □ [2] 001 rh001 White      ■ [2] 001 RH230 Yellow      □ [2] 001 RH412 Silver

Instructions for using the graph.

GAUGE= 5 STS = 1"  
4 ROWS = 1"

I USED SIZE "H" AFGHAN HOOK, USE WHATEVER SIZE GIVES YOU THE CORRECT GAUGE. CAN BE DONE IN AFGHAN STITCH OR SINGLE CROCHET.

EACH SQUARE ON THE GRAPH REPRESENTS 1 STITCH. FOR SINGLE CROCHET READ THE CHART FROM RIGHT TO LEFT, AND THEN LEFT TO RIGHT. IF USING AFGHAN STITCH ALWAYS READ FROM THE RIGHT.

TO START: CHAIN ONE MORE STITCH THAN GRAPH.

IF YOU NEED TO MAKE THE PATTERN LARGER ADD STITCHES EVENLY TO BOTH SIDES OR ADD ROWS EVENLY ABOVE AND BELOW.

## ESTIMATED YARN NEEDED:

BLACK ; 25 OUNCES

WHITE: 4 OUNCES

SILVER: 5 OUNCES

YELLOW: 9 OUNCES