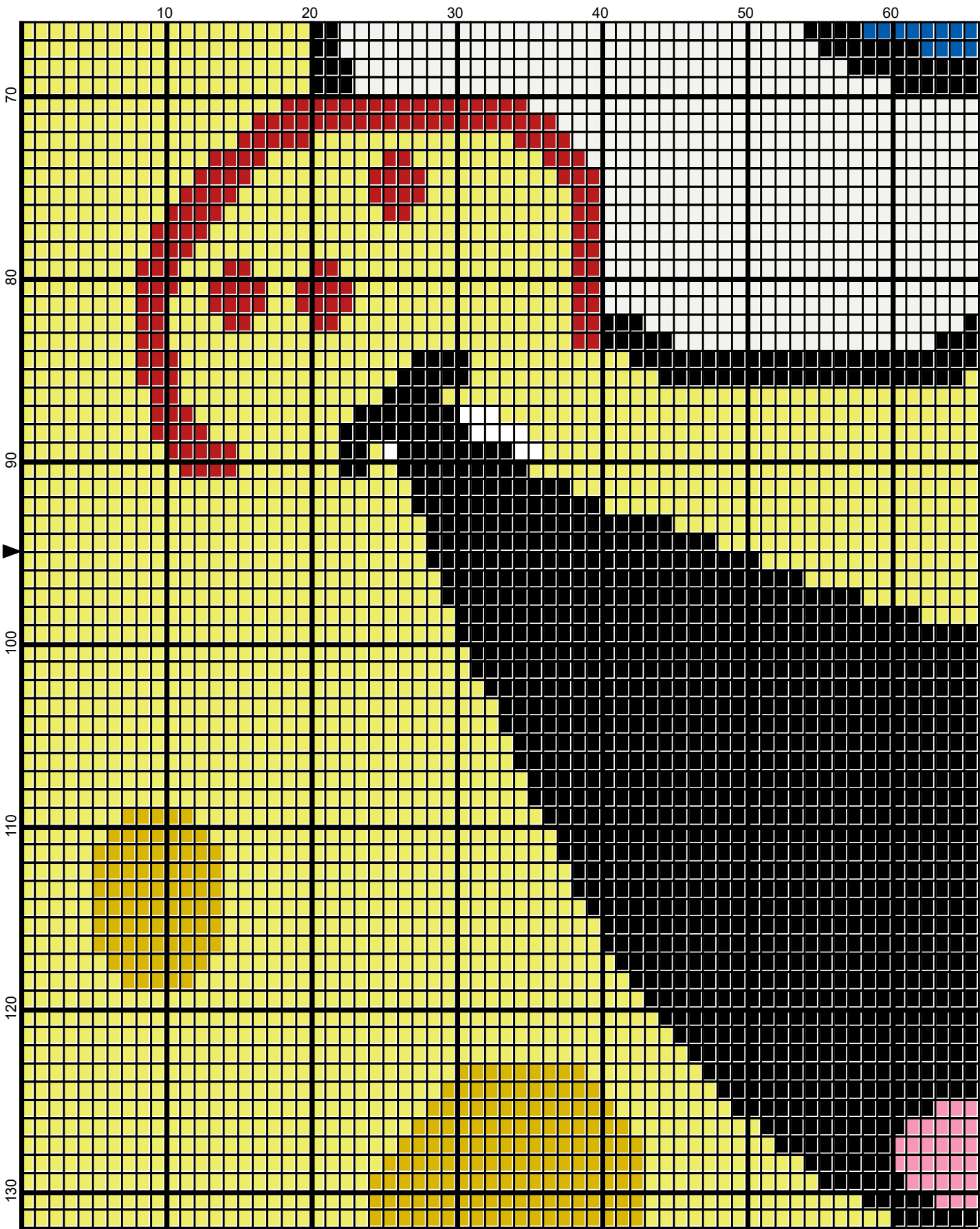
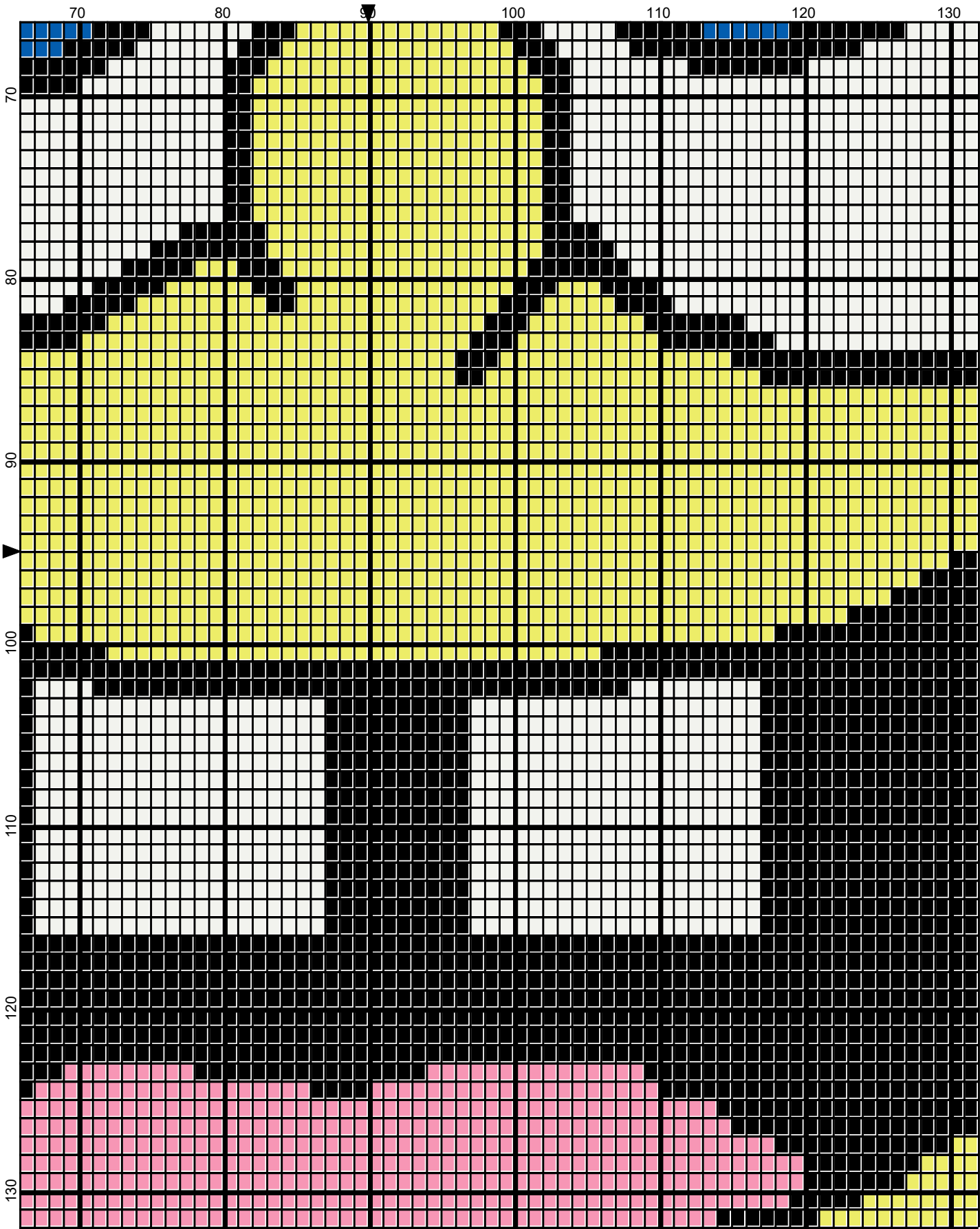
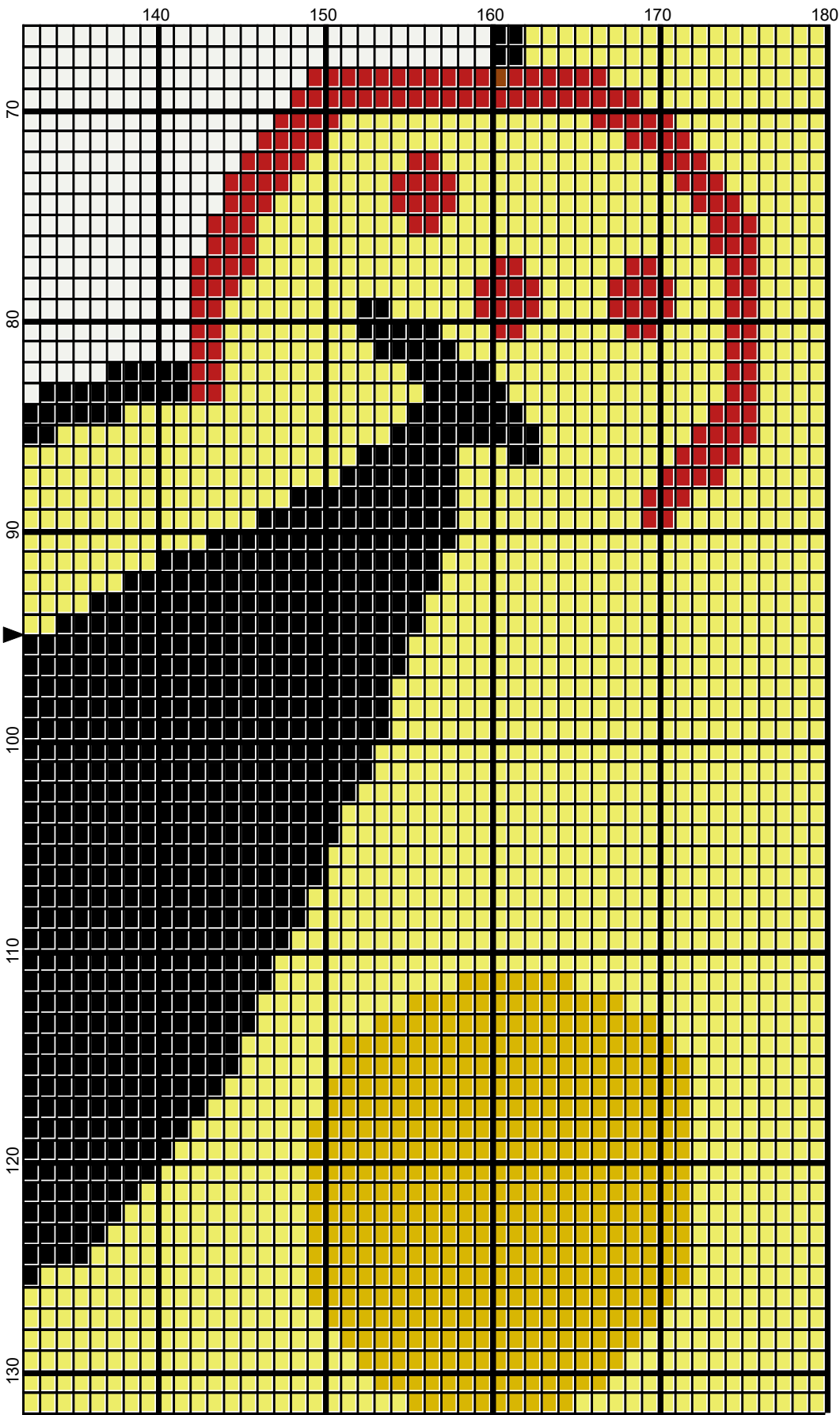


May 2019

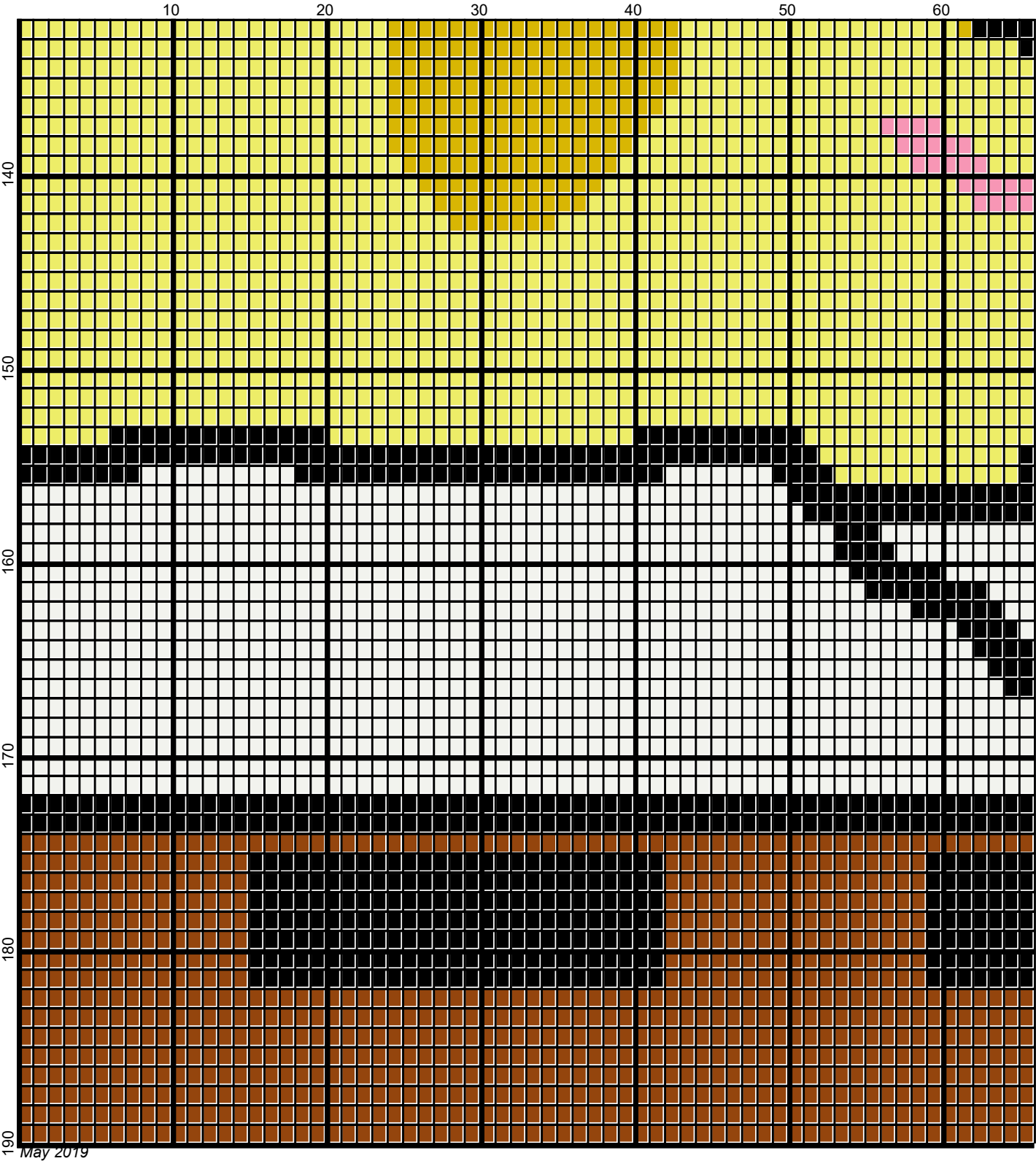


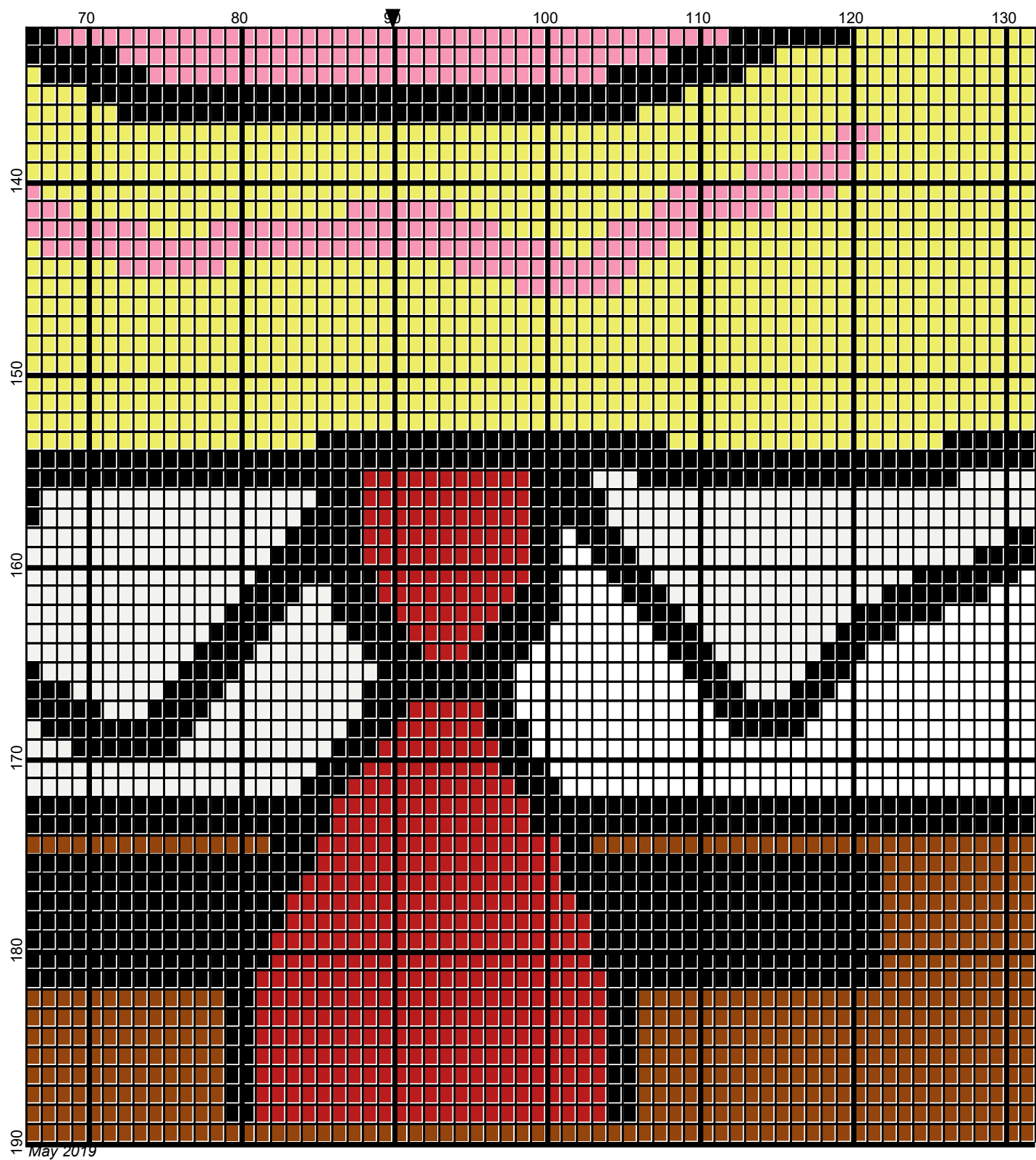


May 2019

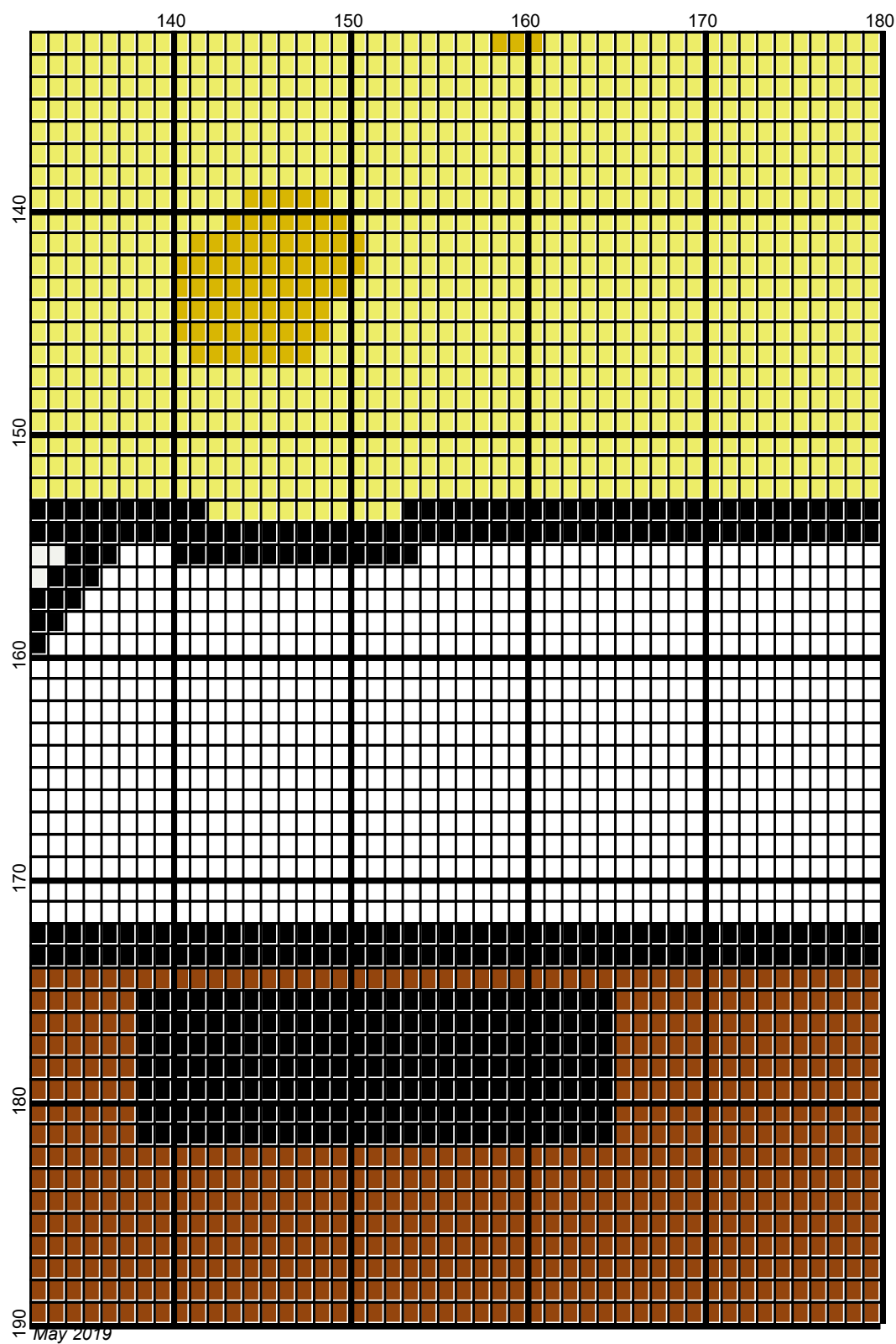


May 2019

















May 2019

# spongebob\_face\_180x190

---

**Author:** Donna Hammell  
**Copyright:** May 2019  
**Website:** [www.donnascrochetshoppe.com](http://www.donnascrochetshoppe.com)  
**Grid Size:** 180W x 190H  
**Design Area:** 18.00" x 23.75" (180 x 190 stitches)

## Legend:

 [2] RHS 256 Carrot	 [2] RHS 706 Perfect Pink	 [2] RHS 390 Hot Red
 [2] RHS 312 Black	 [2] RHS 3945 BLUE SUEDE	 [2] RHS 316 Soft White
 [2] RHS 324 Bright Yellow	 [2] RHS 321 Gold	

Instructions for using the graph.

GAUGE= 5 STS = 1"  
4 ROWS = 1"

I USED SIZE "H" AFGHAN HOOK, USE WHATEVER SIZE GIVES YOU THE CORRECT GAUGE. CAN BE DONE IN AFGHAN STITCH OR SINGLE CROCHET.

EACH SQUARE ON THE GRAPH REPRESENTS 1 STITCH. FOR SINGLE CROCHET READ THE CHART FROM RIGHT TO LEFT, AND THEN LEFT TO RIGHT. IF USING AFGHAN STITCH ALWAYS READ FROM THE RIGHT.

TO START: CHAIN ONE MORE STITCH THAN GRAPH.

IF YOU NEED TO MAKE THE PIECE WIDER ADD AN EVEN NUMBER OF STITCHES TO BOTH SIDES, AND ADD ROWS TO MAKE IT LONGER. THE DESIGN IS CENTERED, SO ADD STITCHES EVENLY TO BOTH SIDES.

## ESTIMATED YARN NEEDED:

BLUE: 1 OUNCE  
WHITE: 8 OUNCES  
RED: 2 OUNCES  
GOLD: 2 OUNCES  
PERFECT PINK: 1 OUNCE  
BRIGHT YELLOW: 20 OUNCES  
CARROT: 3 OUNCES  
BLACK: 8 OUNCES