

Legend:

- RHS-341
- RHS-316
- RHS-376

southern_texas_university_200x200

Author: Donna Hammell
Copyright: September 2022
Website: www.donnascrochetshoppe.com
Grid Size: 200W x 200H
Design Area: 20.00" x 25.00" (200 x 200 stitches)

Legend:

■ [2] RHS 341 Light Gray □ [2] RHS 316 Soft White ■ [2] RHS 376 Burgundy

Instructions for using the graph.

GAUGE= 5 STS = 1"
4 ROWS = 1"

I USED SIZE "H" AFGHAN HOOK,USE WHATEVER SIZE GIVES YOU THE CORRECT GAUGE. CAN BE DONE IN AFGHAN STITCH OR SINGLE CROCHET.

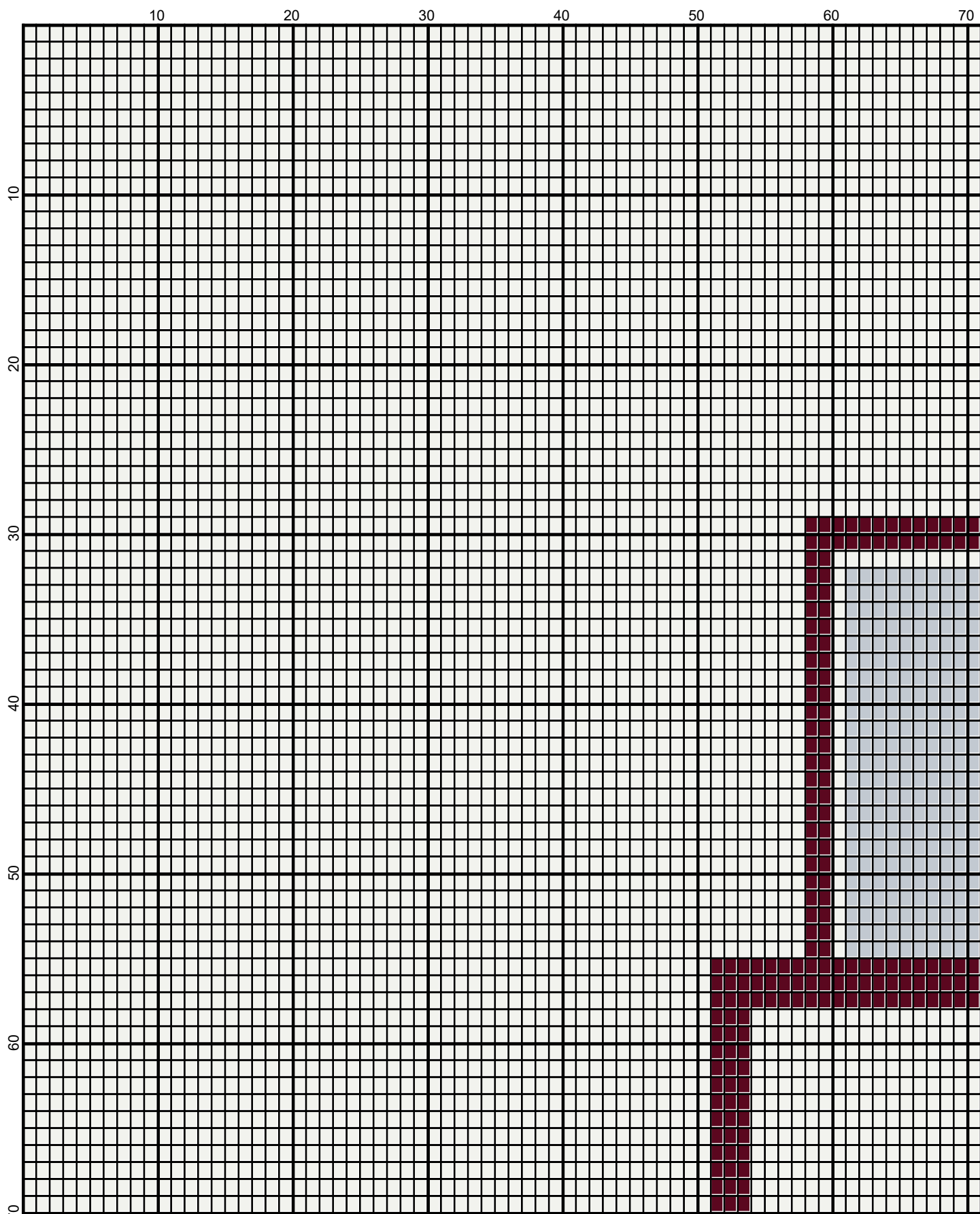
EACH SQUARE ON THE GRAPH REPRESENTS 1 STITCH. FOR SINGLE CROCHET READ THE CHART FROM RIGHT TO LEFT, AND THEN LEFT TO RIGHT. IF USING AFGHAN STITCH ALWAYS READ FROM THE RIGHT.

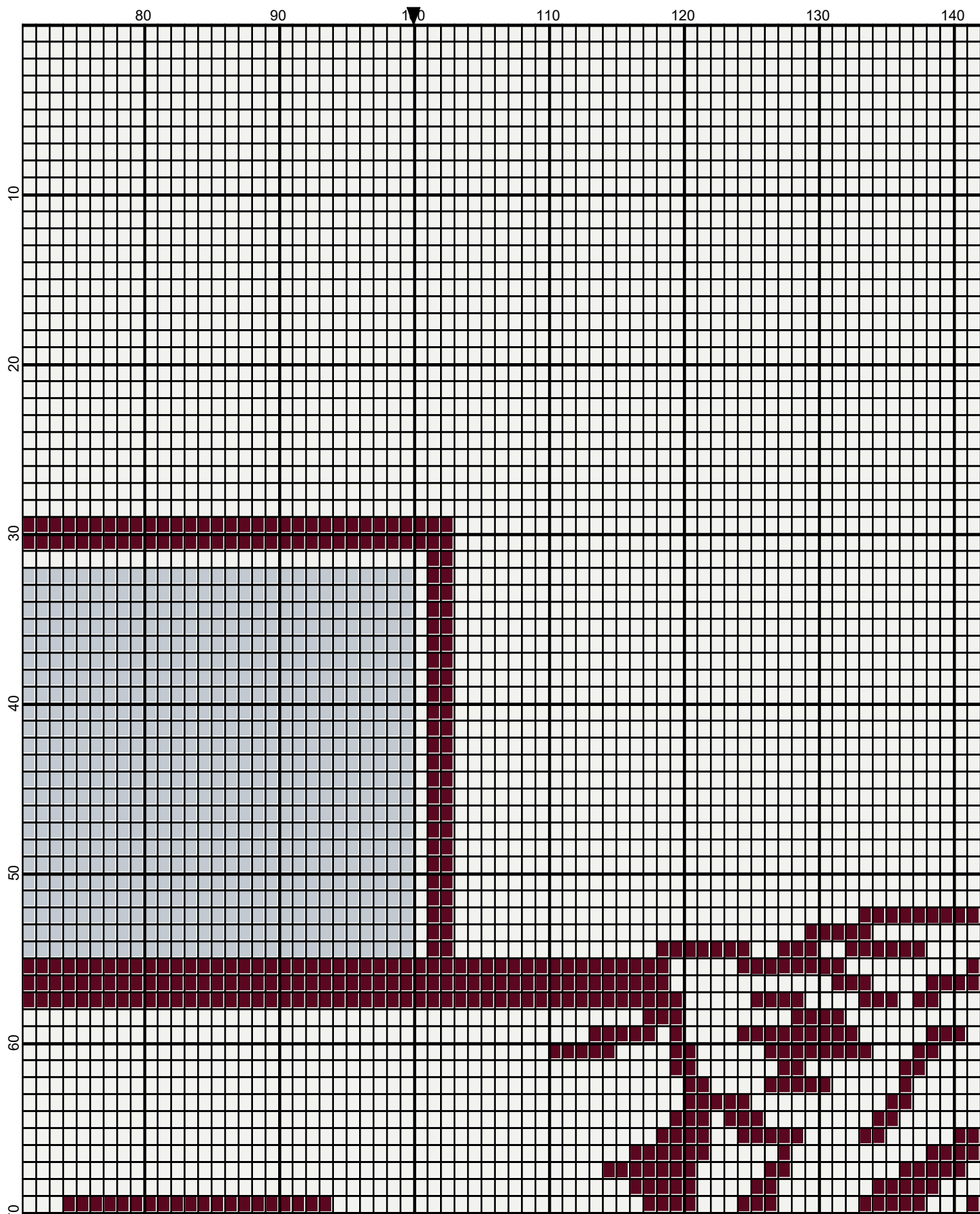
TO START: CHAIN ONE MORE STITCH THAN GRAPH.

IF YOU NEED TO MAKE THE PIECE WIDER ADD AN EVEN NUMBER OF STITCHES TO BOTH SIDES, AND ADD ROWS TO MAKE IT LONGER. THE DESIGN IS CENTERED, SO ADD STITCHES EVENLY TO BOTH SIDES.

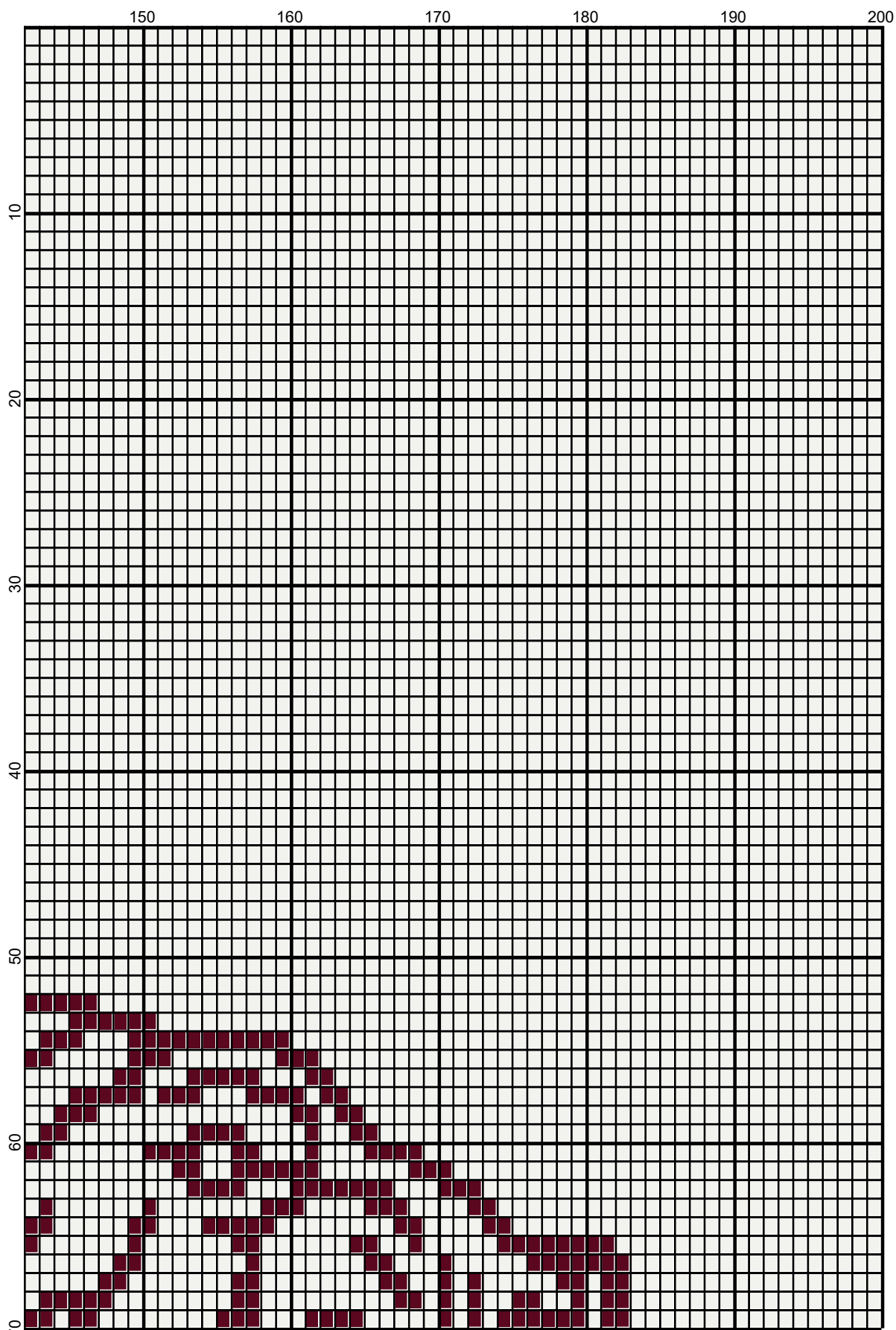
ESTIMATED YARN NEEDED:

WHITE:2025 YDS
BURGUNDY: 260 YDS
LT GRAY: 320 YDS

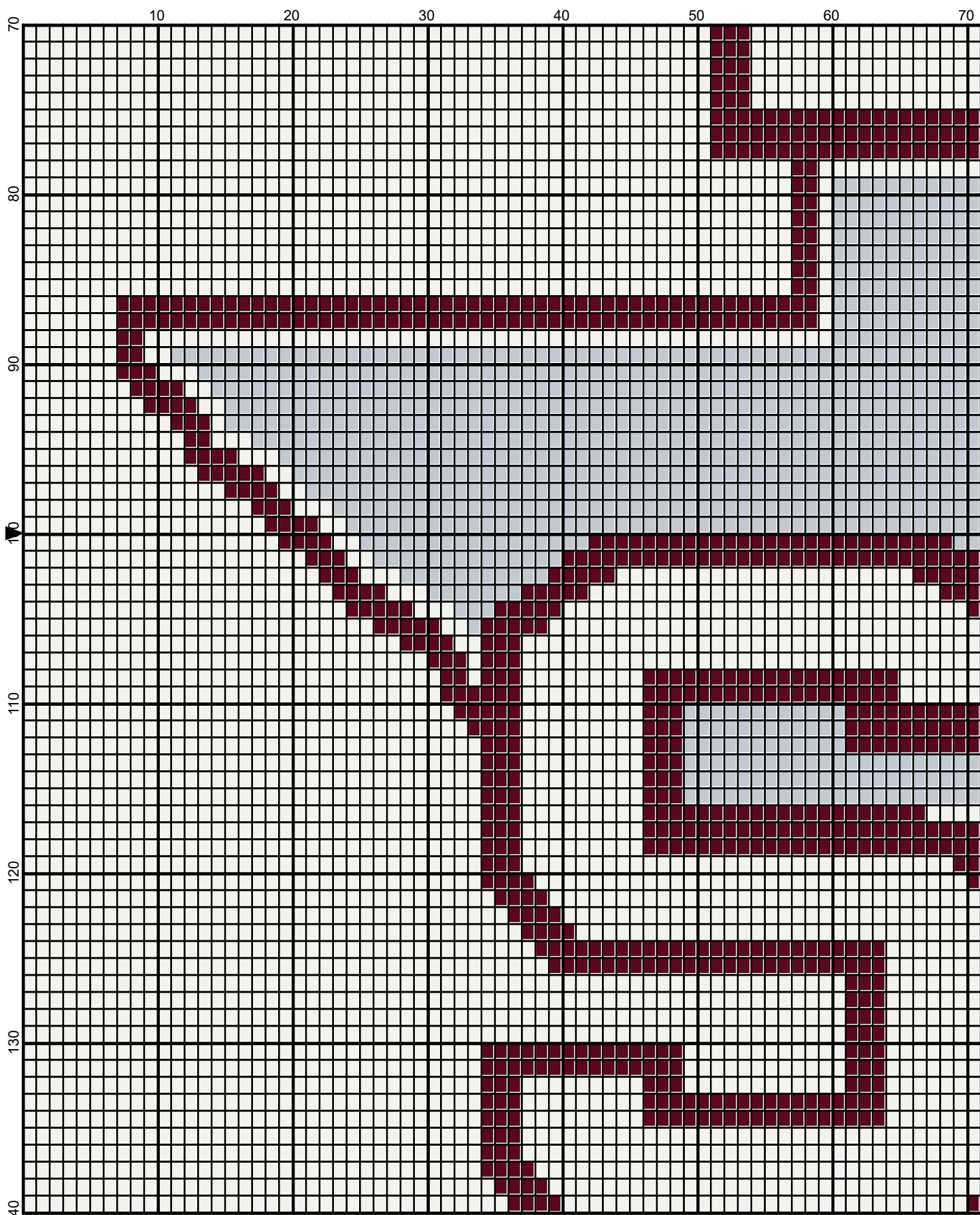


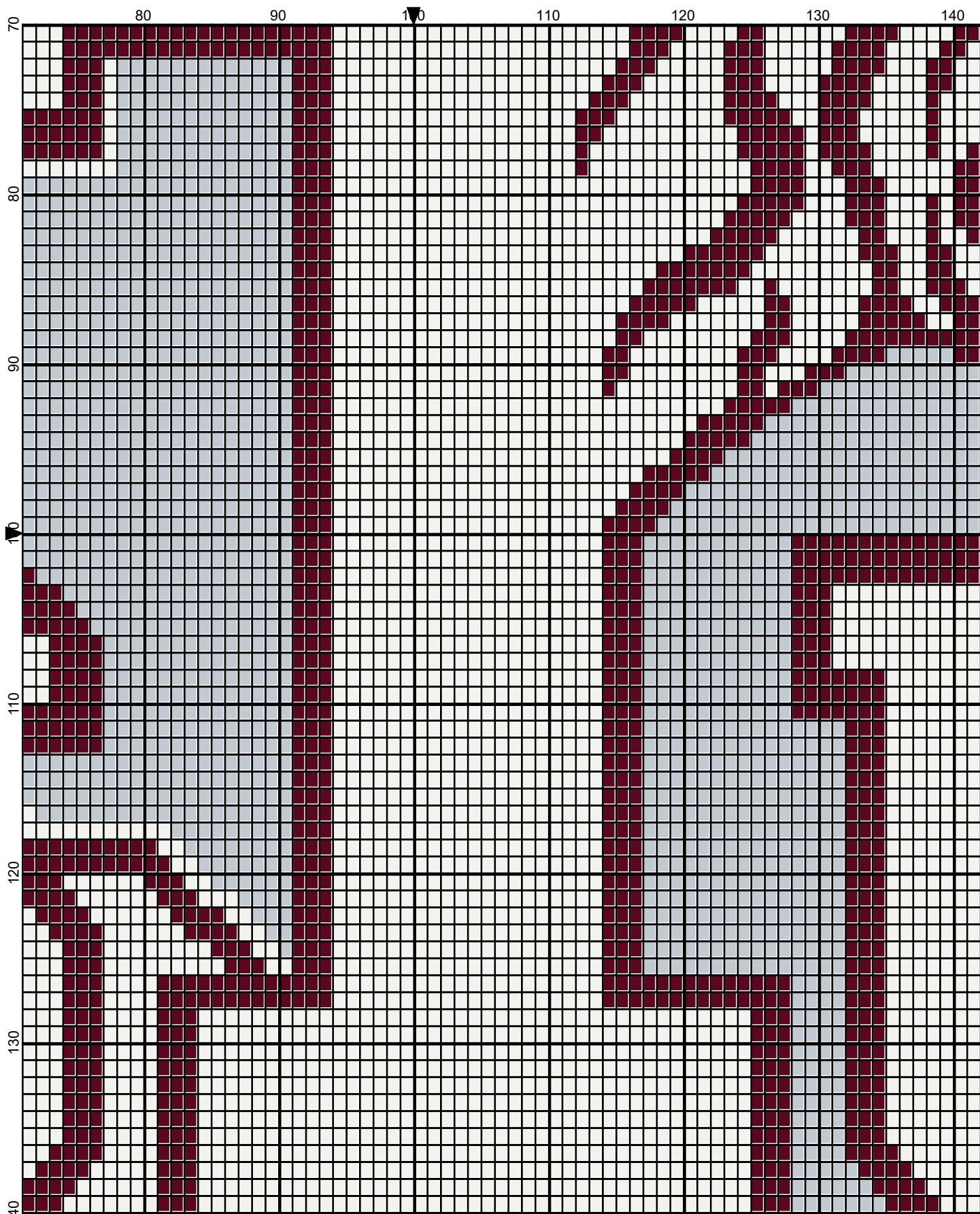


September 2022

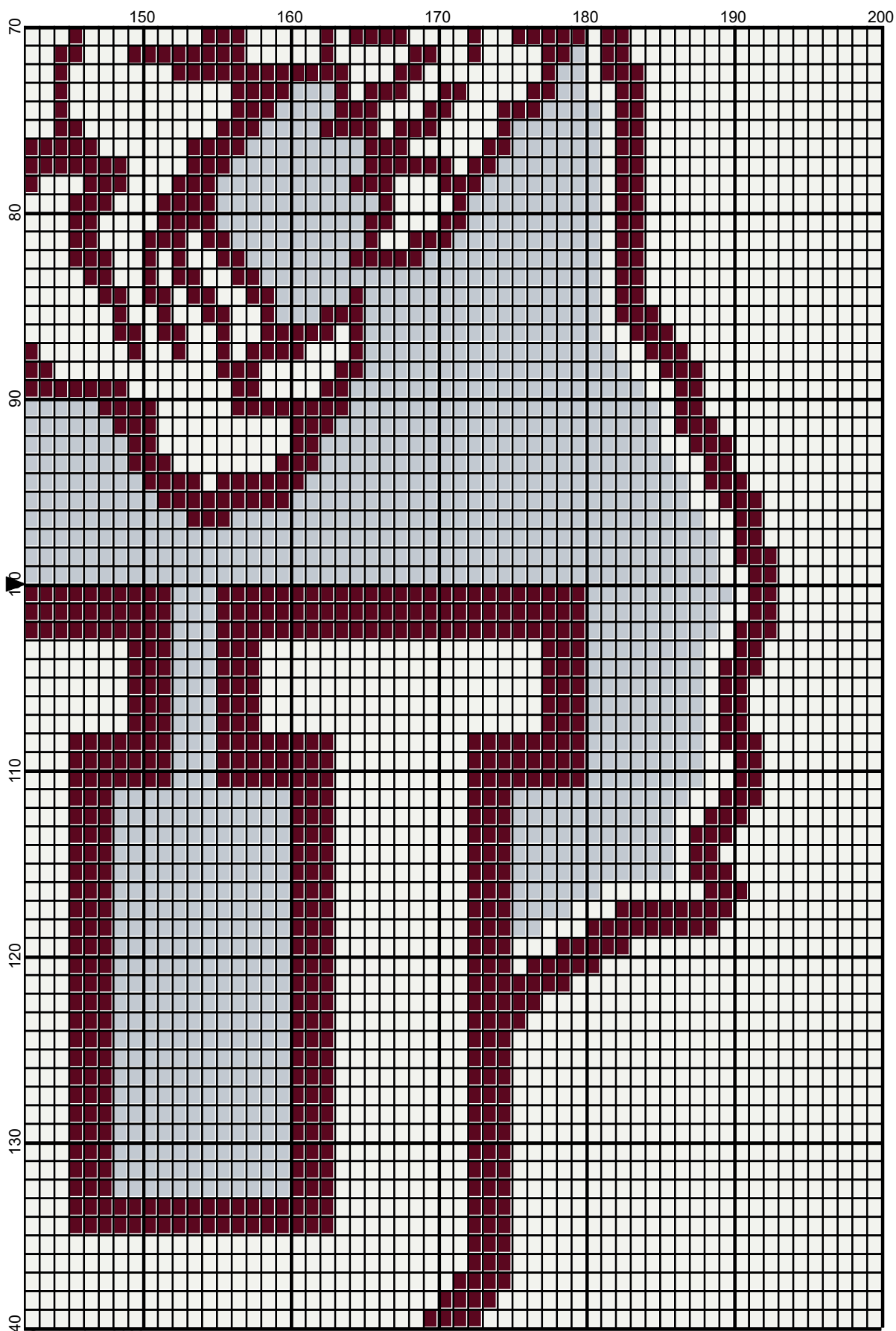


September 2022

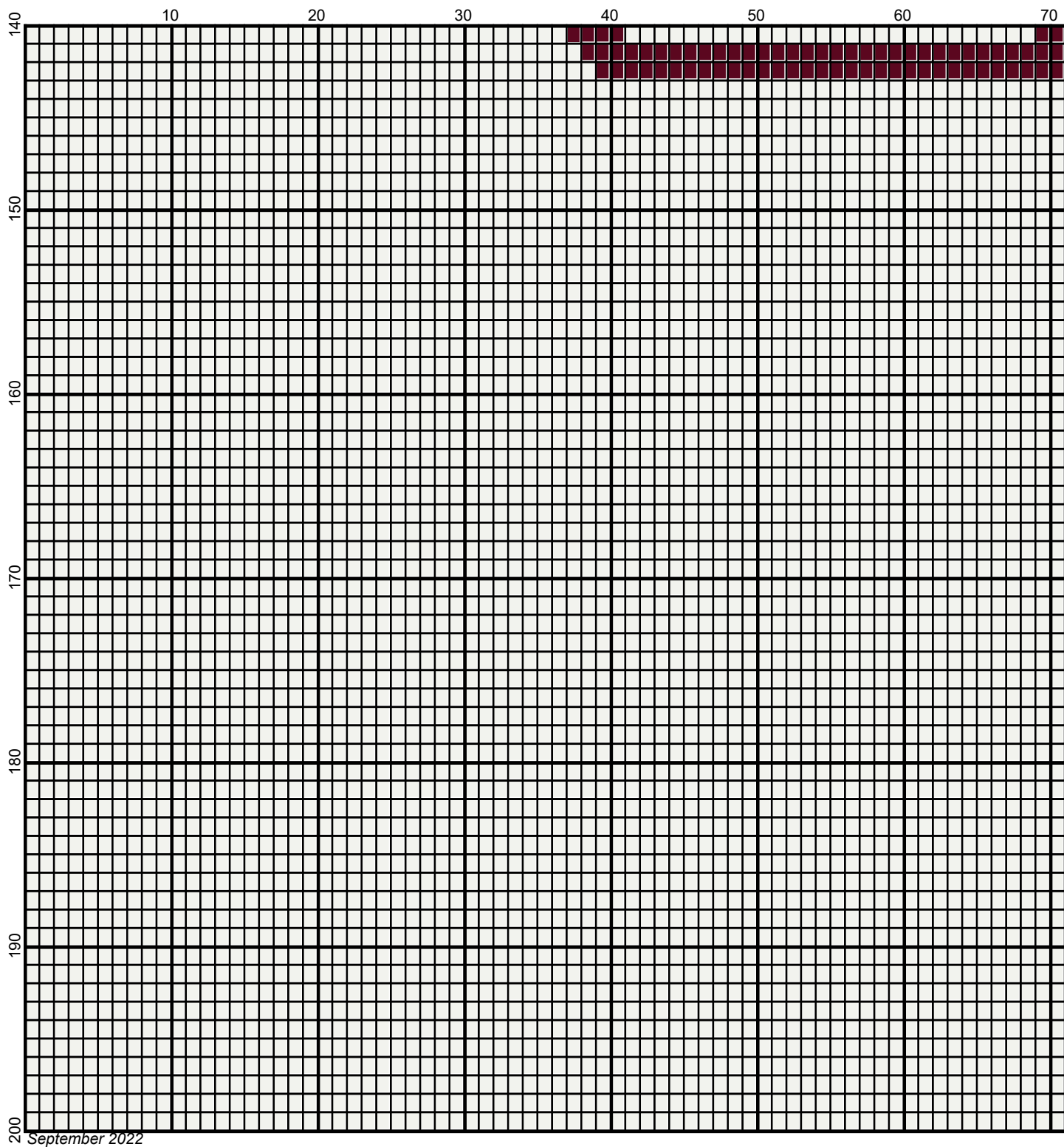




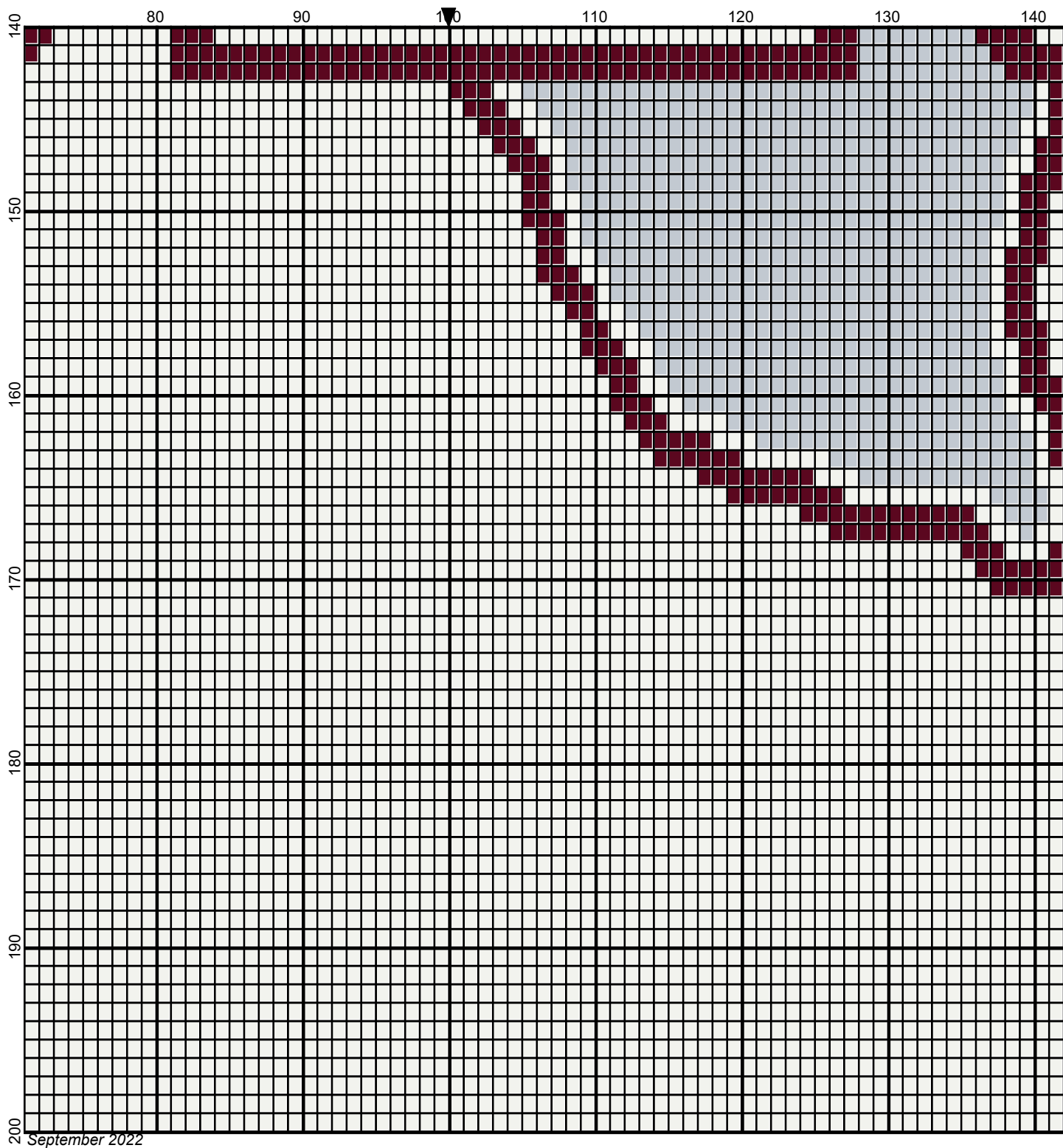
September 2022



September 2022



Legend:



■ RHS-341 ■ RHS-316 ■ RHS-376

