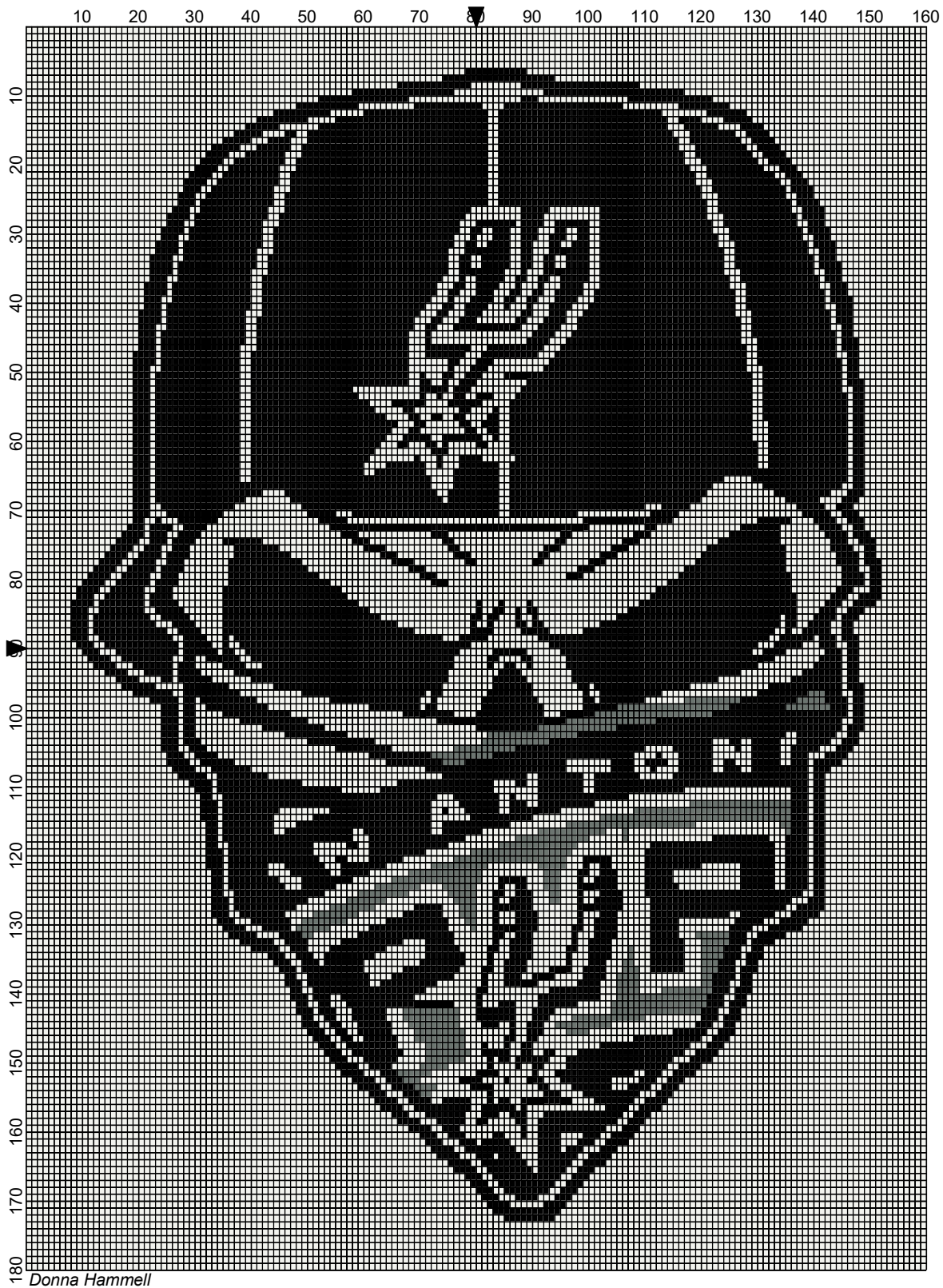


by Donna Hammell



Legend:

■ RHS-312

■ RHS-RH400

□ RHS-316

<No Title>

Author: Donna Hammell
Copyright: Donna Hammell
Website: www.donnascrochetshoppe.com
Grid Size: 160W x 180H
Design Area: 16.00" x 22.50" (160 x 180 stitches)

Legend:

■ [2] RHS 312 Black ■ [2] RHS RH400 Gray Heather □ [2] RHS 316 Soft White

Instructions for using the graph.

GAUGE= 5 STS = 1"
4 ROWS = 1"

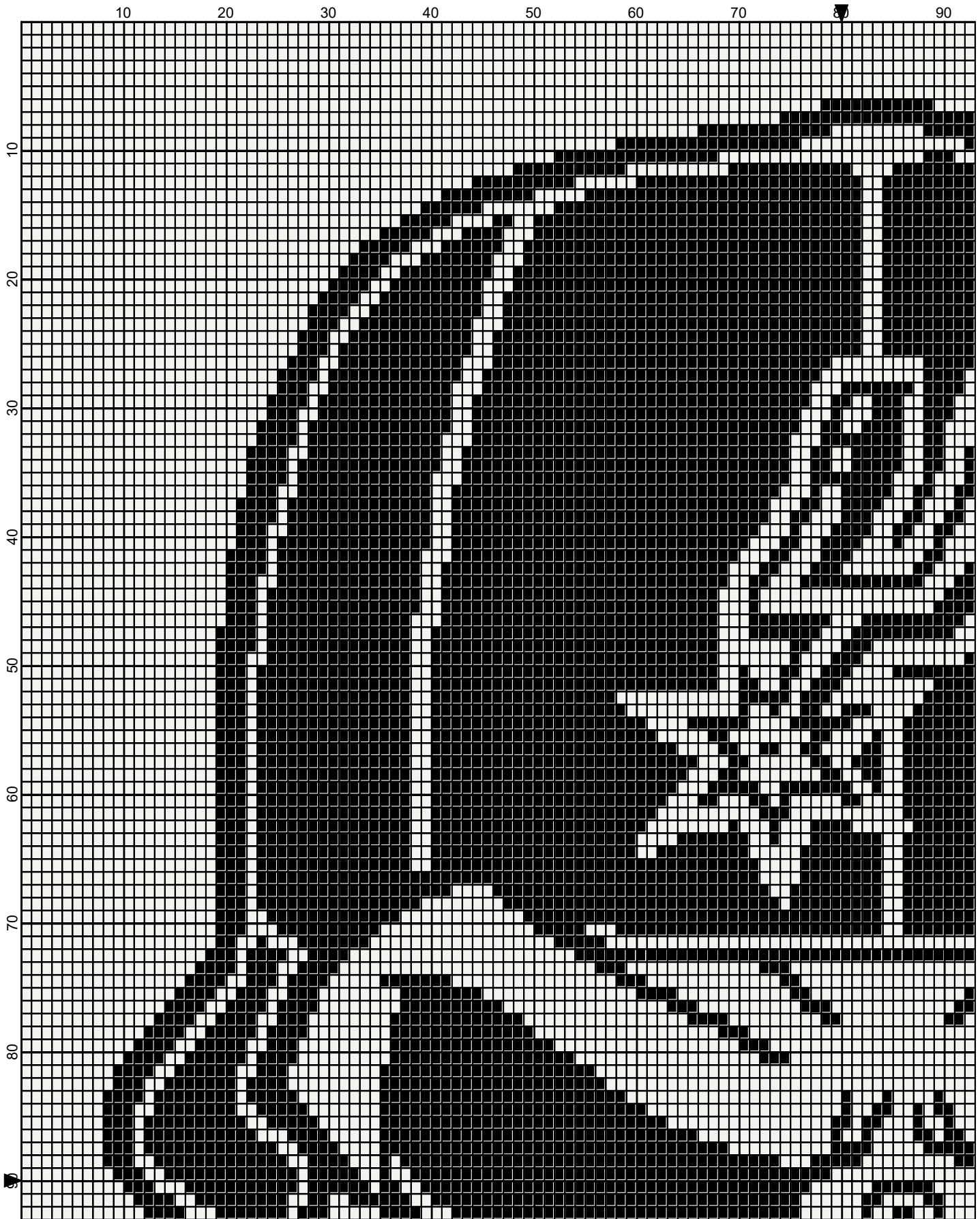
I USED SIZE "H" AFGHAN HOOK,USE WHATEVER SIZE GIVES YOU THE CORRECT GAUGE. CAN BE DONE IN AFGHAN STITCH OR SINGLE CROCHET.

EACH SQUARE ON THE GRAPH REPRESENTS 1 STITCH. FOR SINGLE CROCHET READ THE CHART FROM RIGHT TO LEFT, AND THEN LEFT TO RIGHT. IF USING AFGHAN STITCH ALWAYS READ FROM THE RIGHT.

TO START: CHAIN ONE MORE STITCH THAN GRAPH.

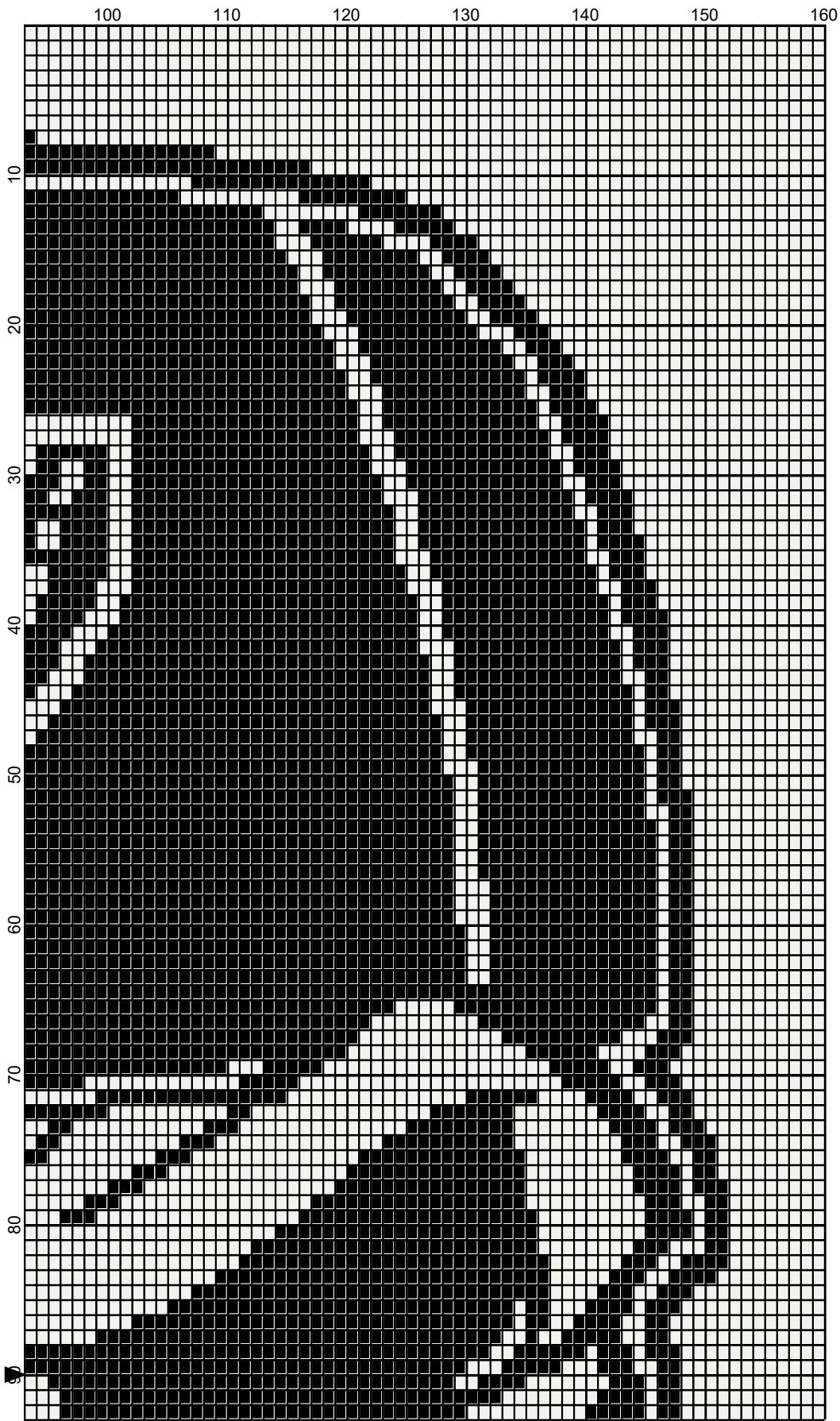
YOU WILL NEED TO ADD STITCHES TO MAKE THE PIECE WIDER, AND ADD ROWS TO MAKE IT LONGER. THE DESIGN IS CENTERED, SO ADD STITCHES EVENLY TO BOTH SIDES.

ESTIMATED YARN NEEDED:
WHITE:21 OUNCES/1090 YDS
BLACK:15 OUNCES/745 YDS
GRAY:1 OUNCE/46 YDS



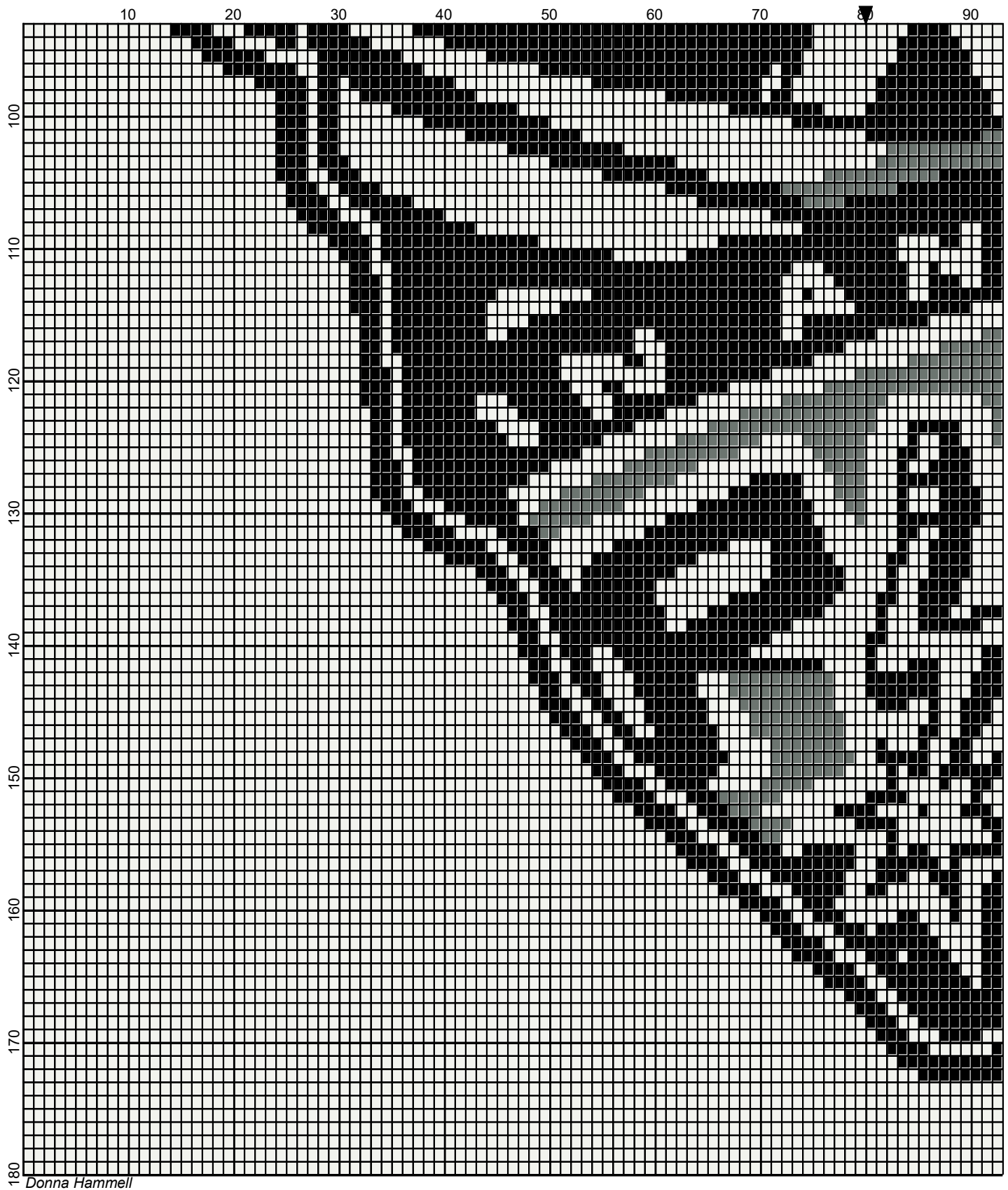
Donna Hammell

by Donna Hammell



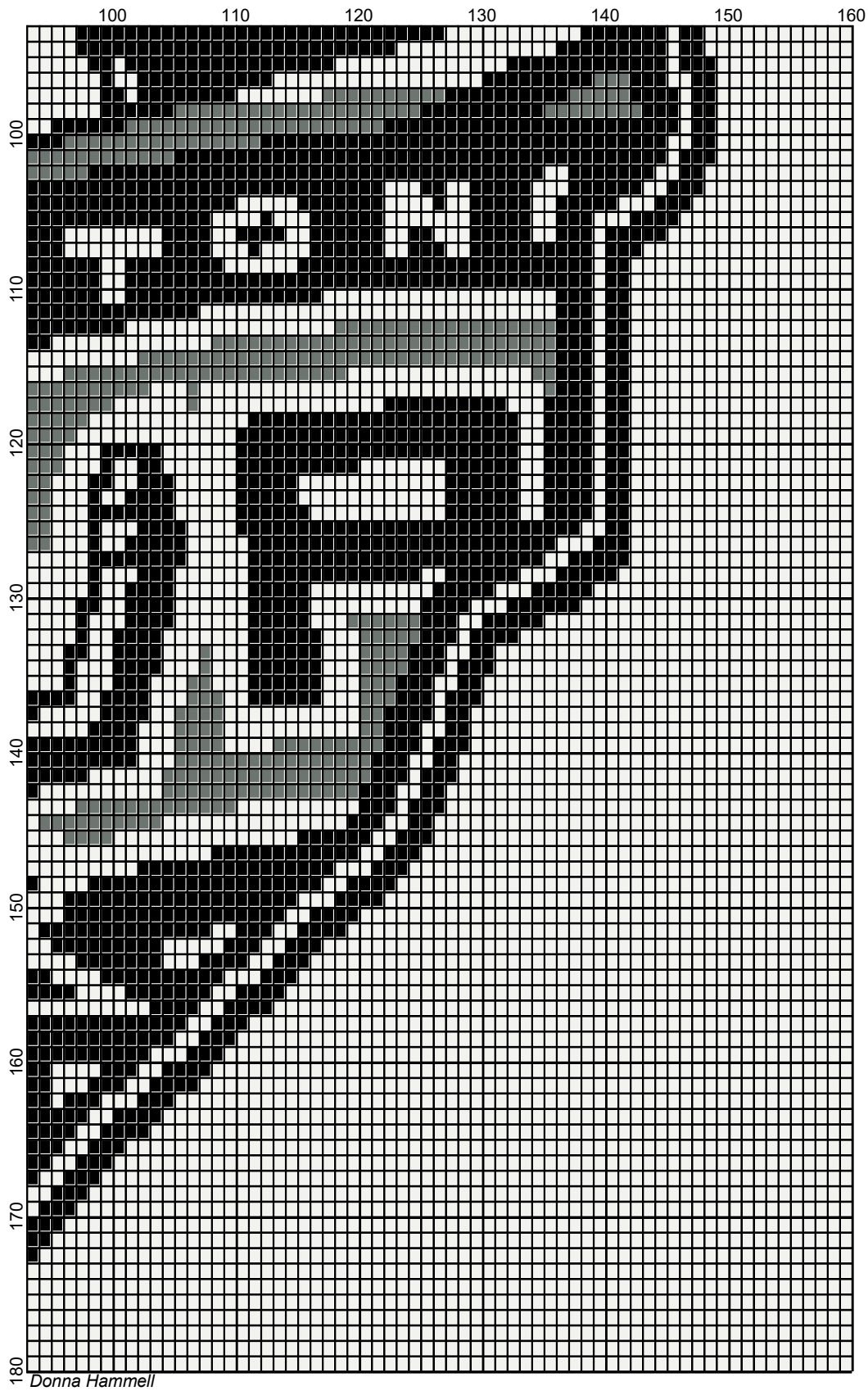
Donna Hammell

by Donna Hammell



Legend:

by Donna Hammell



■ RHS-312 ■ RHS-RH400 □ RHS-316