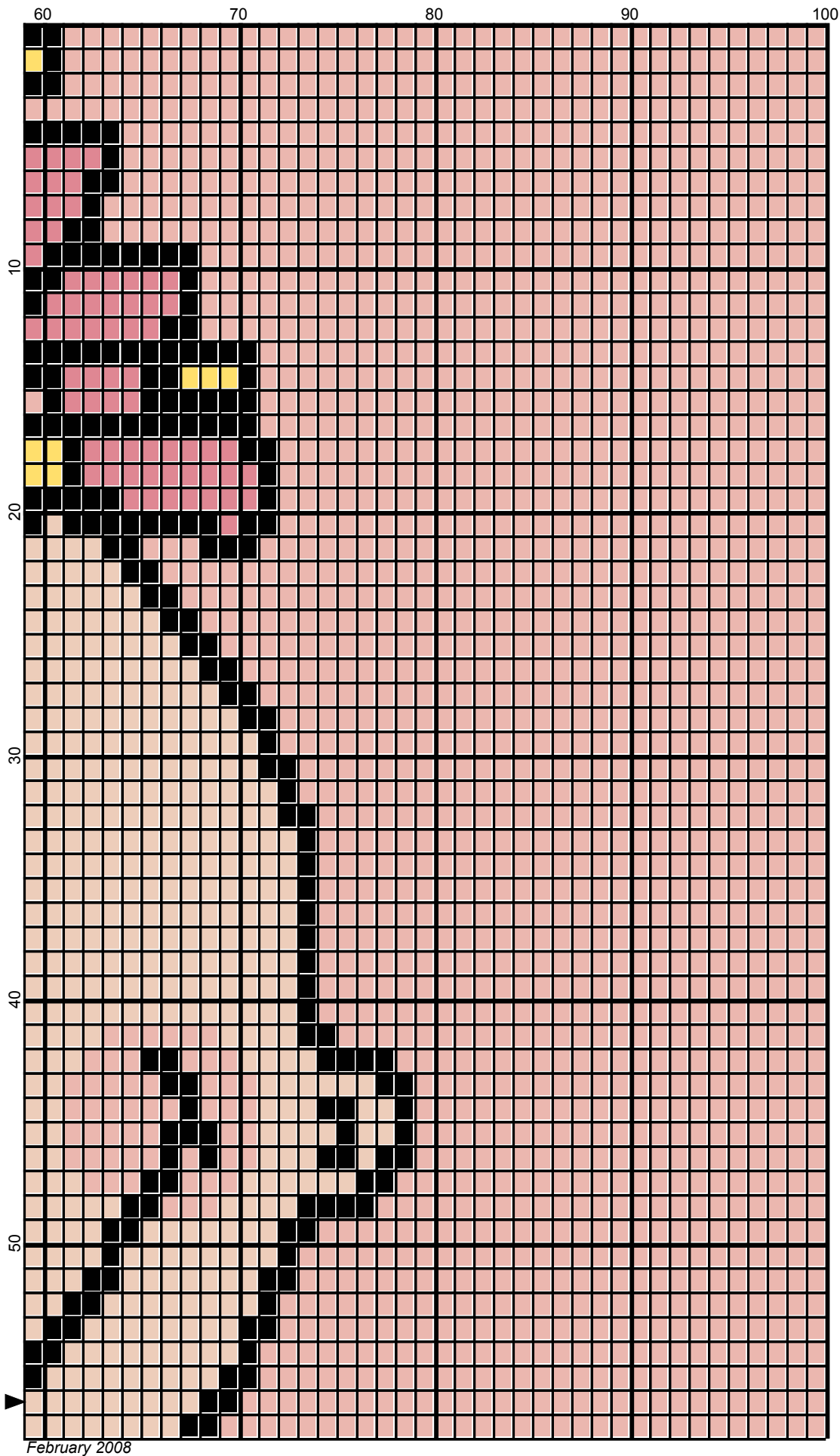
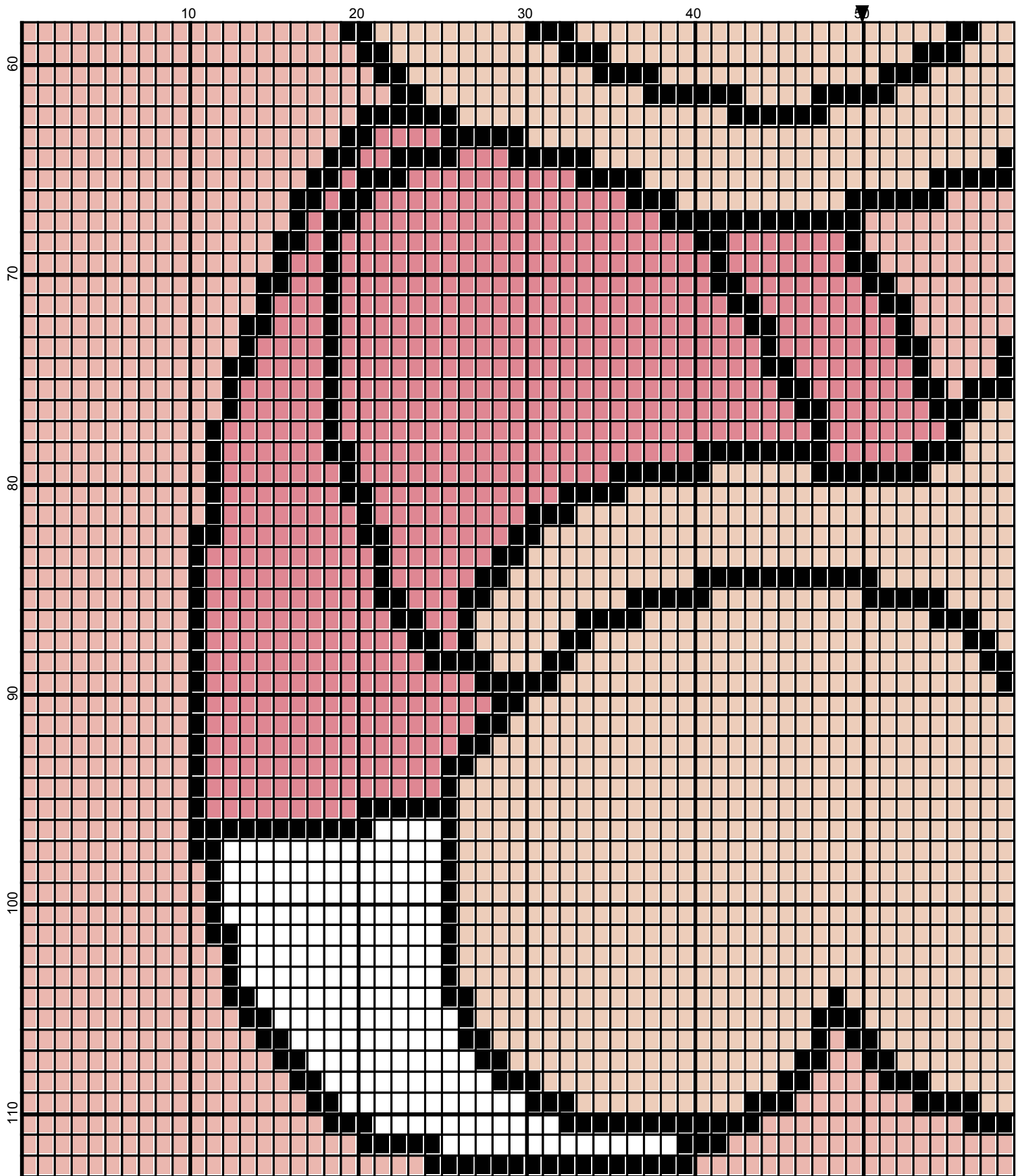


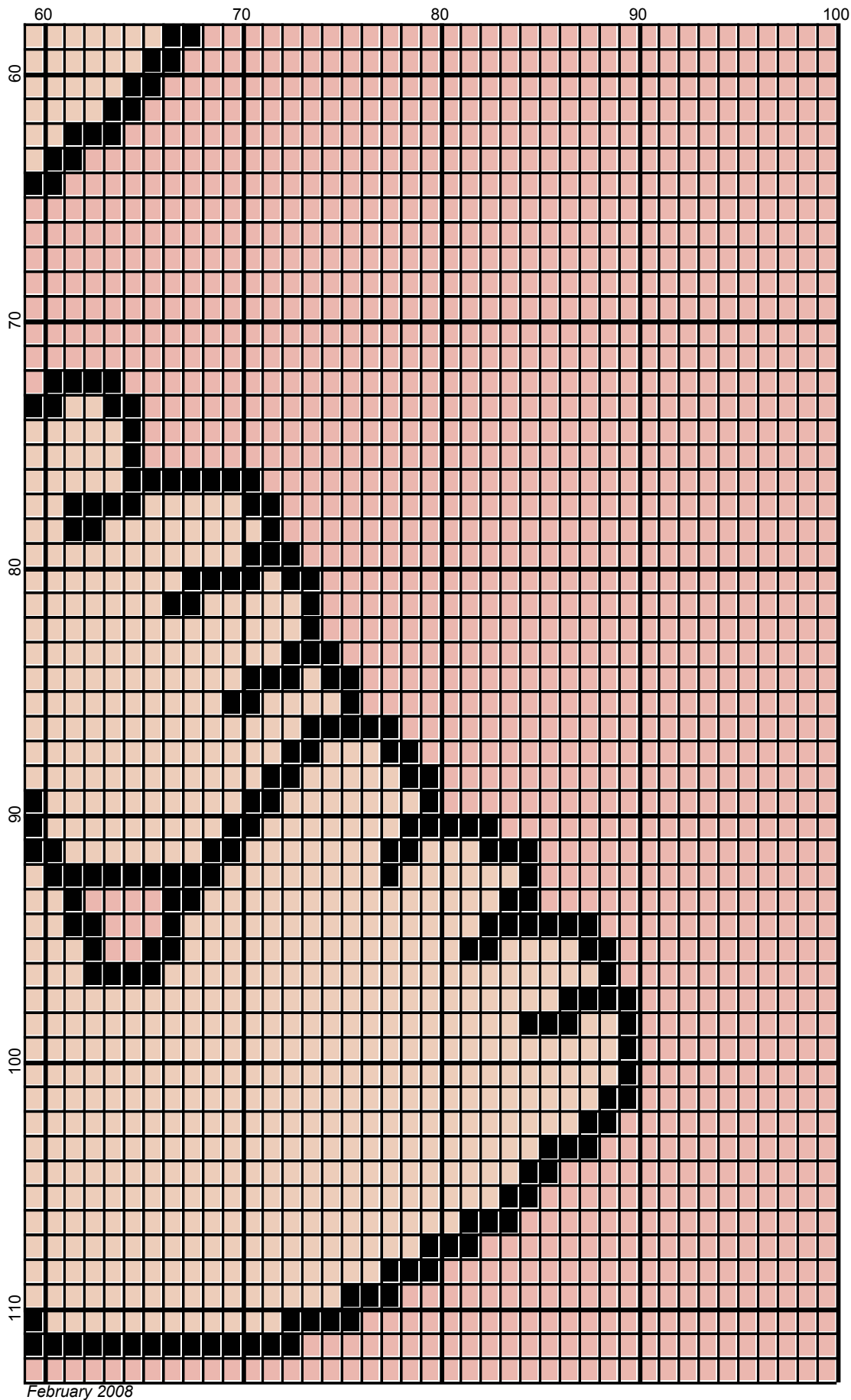
Preemie Girl by Donna Hammell





February 2008

Preemie Girl by Donna Hammell





February 2008



# Preemie Girl



---

**Author:** Donna Hammell  
**Copyright:** February 2008  
**Website:** [www.geocities.com/crochetshoppe/patterns.html](http://www.geocities.com/crochetshoppe/patterns.html)  
**Grid Size:** 100W x 113H  
**Design Area:** 10.00" x 14.13" (100 x 113 stitches)

## Legend:

 [2] DMC 224 shell pink - vy lt  
 [2] DMC 310 black

 [2] DMC 950 desert sand - lt  
 [2] DMC 962 dusty rose - md

 [2] DMC 743 yellow - md  
 [2] DMC White white

Instructions for using the graph.

GAUGE= 5 STS = 1"  
4 ROWS = 1"

I USED SIZE "H" AFGHAN HOOK,USE WHATEVER SIZE GIVES YOU THE CORRECT GAUGE. CAN BE DONE IN AFGHAN STITCH OR SINGLE CROCHET.

EACH SQUARE ON THE GRAPH REPRESENTS 1 STITCH. FOR SINGLE CROCHET READ THE CHART FROM LEFT TO RIGHT. IF USING AFGHAN STITCH ALWAYS READ FROM THE RIGHT.

TO START: CHAIN ONE MORE STITCH THAN GRAPH.

YOU WILL NEED TO ADD STITCHES TO MAKE THE PIECE WIDER, AND ADD ROWS TO MAKE IT LONGER. THE DESIGN IS CENTERED, SO ADD STITCHES EVENLY TO BOTH SIDES.

## ESTIMATED YARN NEEDED:

BLACK ;2 OUNCES

LIGHT PINK: 6 OUNCES

DESERT SAND/PEACH FLESH COLOR: 4 OUNCES

DUSTY ROSE/DARK PINK: 1 OUNCE

WHITE:SMALL AMOUNT

YELLOW : 1 OUNCE

BACKGROUND: 6 OUNCES