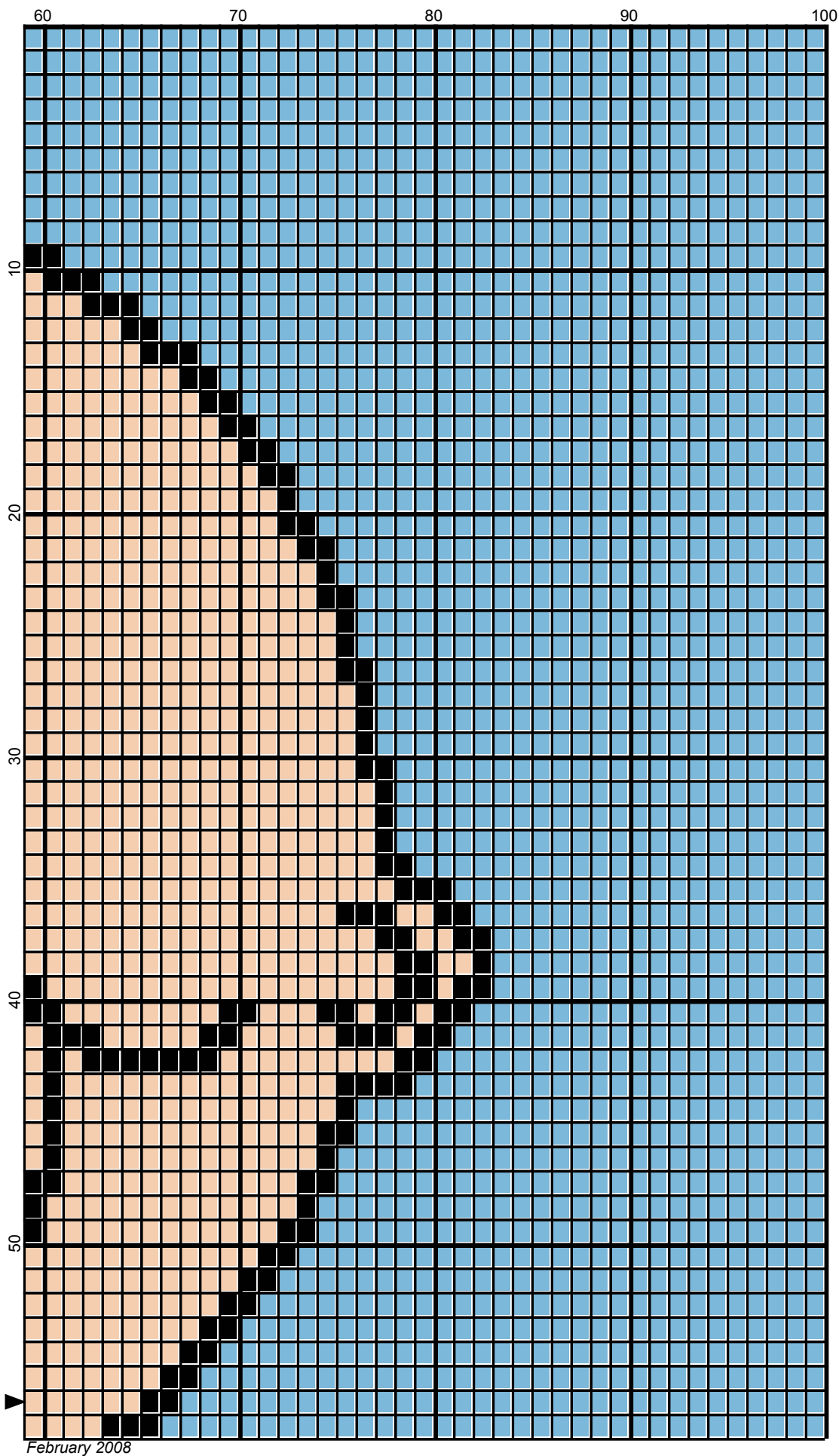
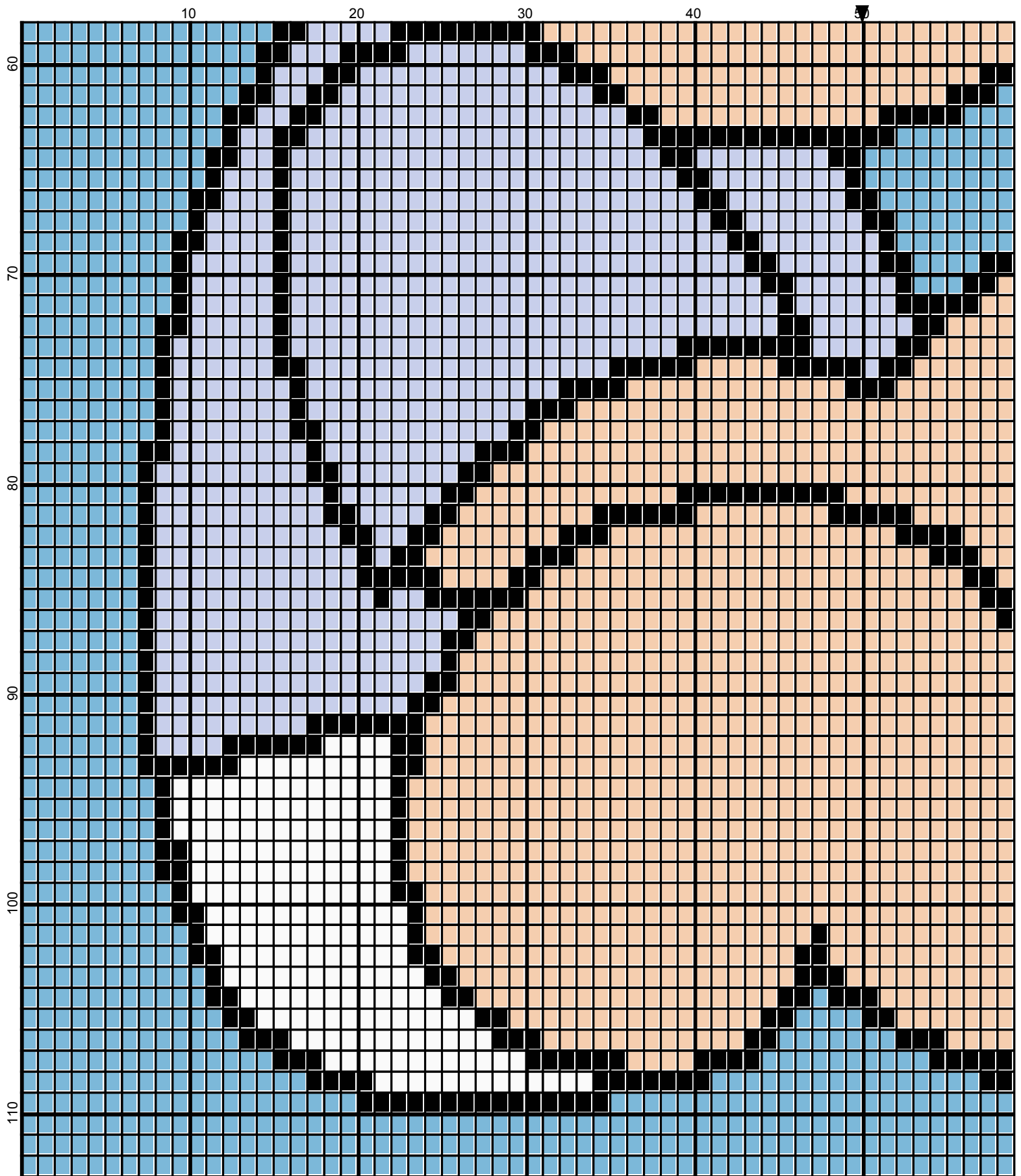
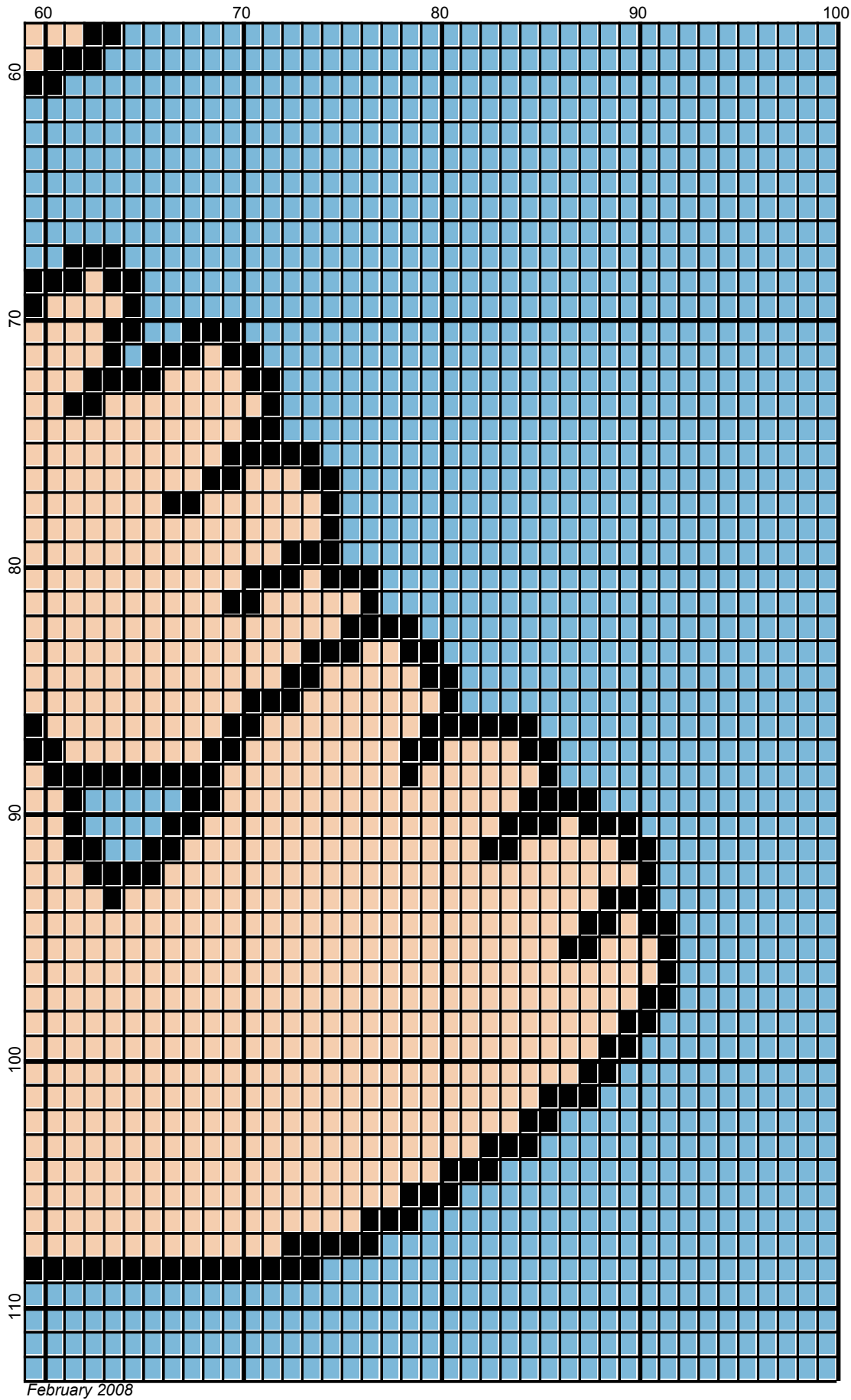


February 2008





February 2008





February 2008



# Preemie Boy

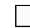

---

**Author:** Donna Hammell  
**Copyright:** February 2008  
**Website:** [www.geocities.com/crochetshoppe/patterns.html](http://www.geocities.com/crochetshoppe/patterns.html)  
**Grid Size:** 100W x 113H  
**Design Area:** 10.00" x 14.13" (100 x 113 stitches)

## Legend:

 [2] SSO SS2615 SOFT BLUE  
 [2] SSO SS2680 BLACK

 [2] SSO SS9607 LIGHT PEACH  
 [2] SSO SS2722 CHOCOLATE

 [2] 001 rh001 White  
 [2] 001 RH815 Pale Blue

Instructions for using the graph.

GAUGE= 5 STS = 1"  
4 ROWS = 1"

I USED SIZE "H" AFGHAN HOOK,USE WHATEVER SIZE GIVES YOU THE CORRECT GAUGE. CAN BE DONE IN AFGHAN STITCH OR SINGLE CROCHET.

EACH SQUARE ON THE GRAPH REPRESENTS 1 STITCH. FOR SINGLE CROCHET READ THE CHART FROM RIGHT TO LEFT, AND THEN LEFT TO RIGHT. IF USING AFGHAN STITCH ALWAYS READ FROM THE RIGHT.

TO START: CHAIN ONE MORE STITCH THAN GRAPH.

YOU WILL NEED TO ADD STITCHES TO MAKE THE PIECE WIDER, AND ADD ROWS TO MAKE IT LONGER. THE DESIGN IS CENTERED, SO ADD STITCHES EVENLY TO BOTH SIDES.

## ESTIMATED YARN NEEDED:

BLACK ; 2 OUNCES

CHOCOLATE: SMALL AMOUNT

PALE BLUE: 3 OUNCES

SOFT BLUE: 1 OUNCES

WHITE: SMALL AMOUNT

LT PEACH: 5 OUNCES