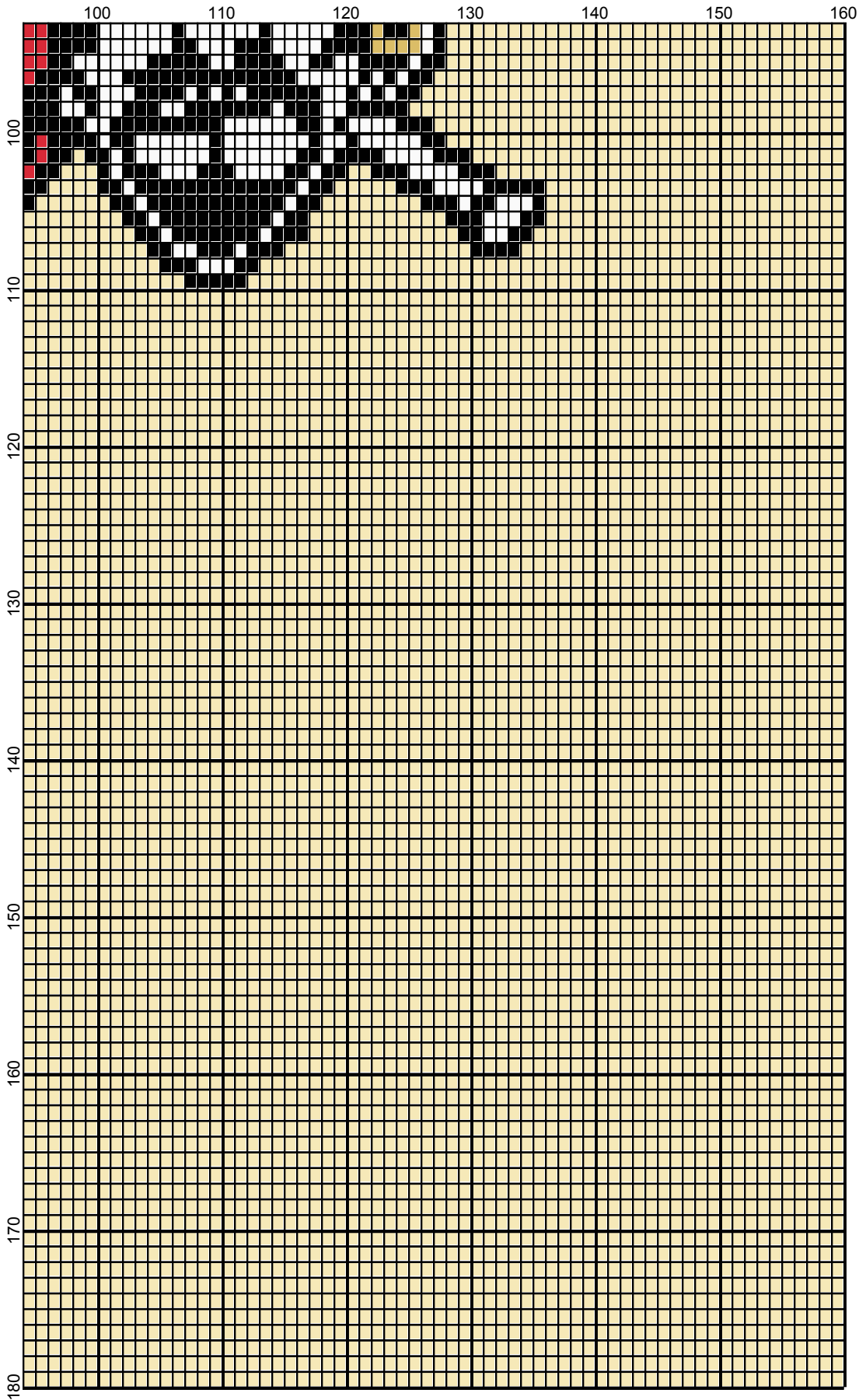


- Legend:
- 001-RH012
 - 001-RH645
 - 001-rh001
 - 001-RH245
 - 001-RH230
 - 001-RH912
 - 001-RH849
 - 001-RH412
 - 001-RH111





<No Title>

Author: Donna Hammell
Website: www.donnacrochetshoppe.com
Grid Size: 160W x 180H
Design Area: 16.00" x 22.50" (160 x 180 stitches)

Legend:

■ [2] 001 RH012 Black	■ [2] 001 RH245 Orange	■ [2] 001 RH849 Olympic Blue
■ [2] 001 RH645 Honey Gold	■ [2] 001 RH230 Yellow	■ [2] 001 RH412 Silver
□ [2] 001 rh001 White	■ [2] 001 RH912 Cherry Red	■ [2] 001 RH111 Eggshell

Instructions for using the graph.

GAUGE= 5 STS = 1"
4 ROWS = 1"

I USED SIZE "H" AFGHAN HOOK,USE WHATEVER SIZE GIVES YOU THE CORRECT GAUGE. CAN BE DONE IN AFGHAN STITCH OR SINGLE CROCHET.

EACH SQUARE ON THE GRAPH REPRESENTS 1 STITCH. FOR SINGLE CROCHET READ THE CHART FROM RIGHT TO LEFT, AND THEN LEFT TO RIGHT. IF USING AFGHAN STITCH ALWAYS READ FROM THE RIGHT.

TO START: CHAIN ONE MORE STITCH THAN GRAPH.

YOU WILL NEED TO ADD STITCHES TO MAKE THE PIECE WIDER, AND ADD ROWS TO MAKE IT LONGER. THE DESIGN IS CENTERED, SO ADD STITCHES EVENLY TO BOTH SIDES.

ESTIMATED RED HEART YARN NEEDED:

BLACK ;3 OUNCES

WHITE:2 OUNCES

HONEY GOLD:1 OUNCES

ORANGE: 1 OUNCE

YELLOW: SMT AMOUNT

CHERRY RED: 1 OUNCE

OLYMPIC BLUE: SM AMOUNT

SILVER : 1 OUNCE

EGGSHELL/BACKGROUND: 20 OUNCES