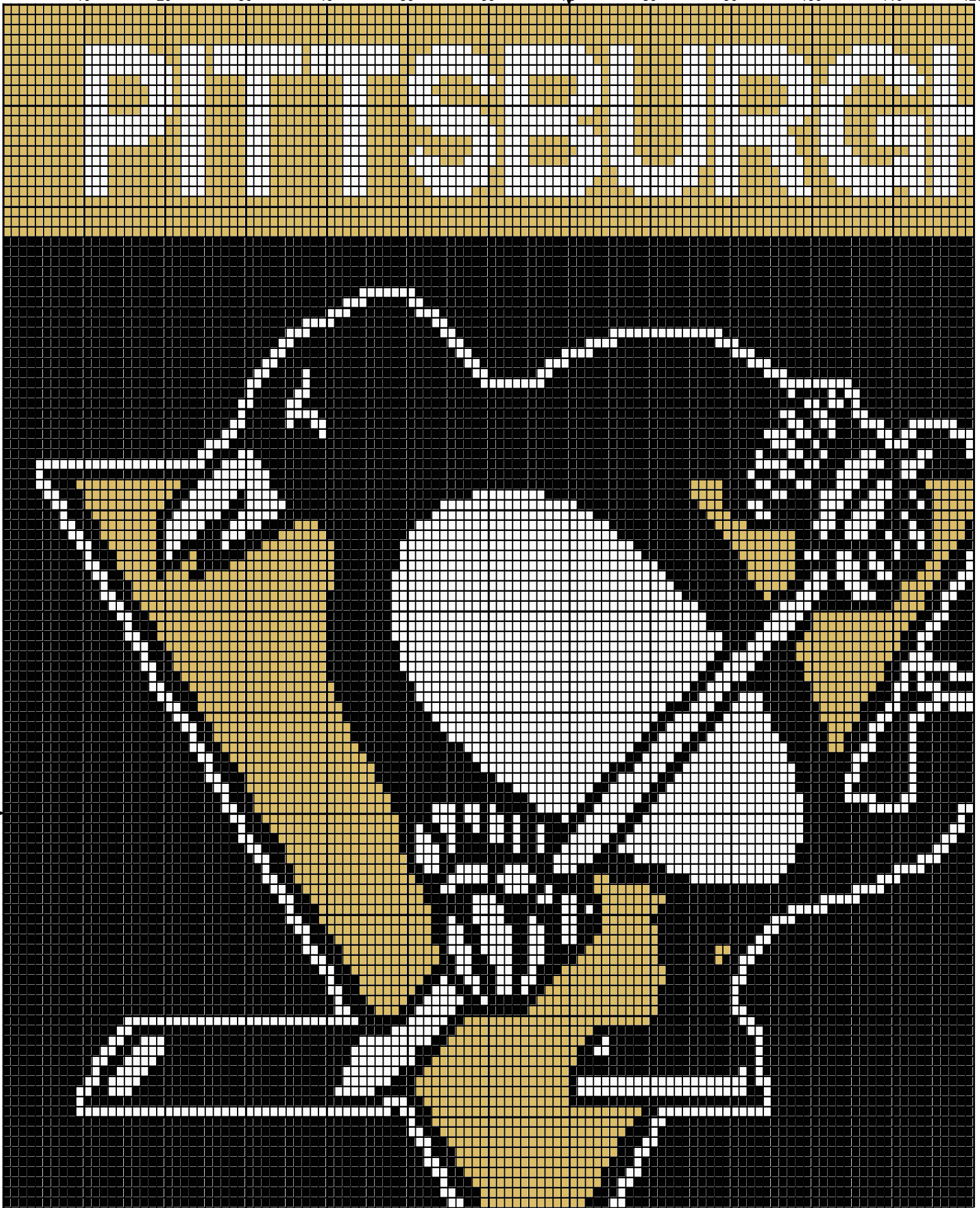
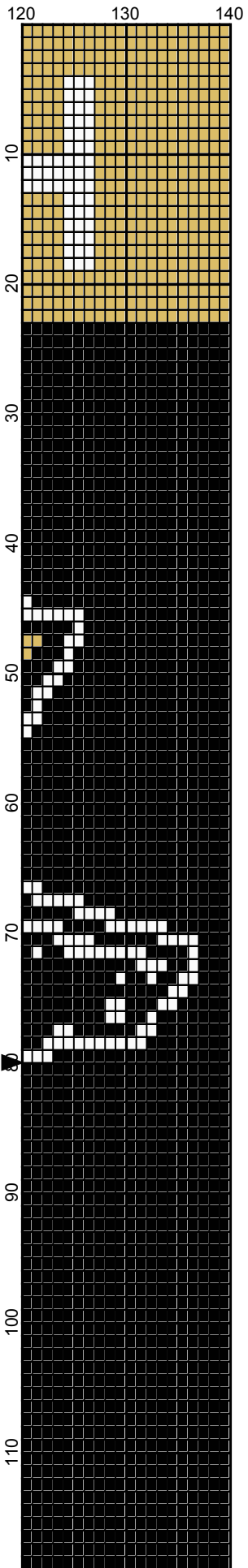
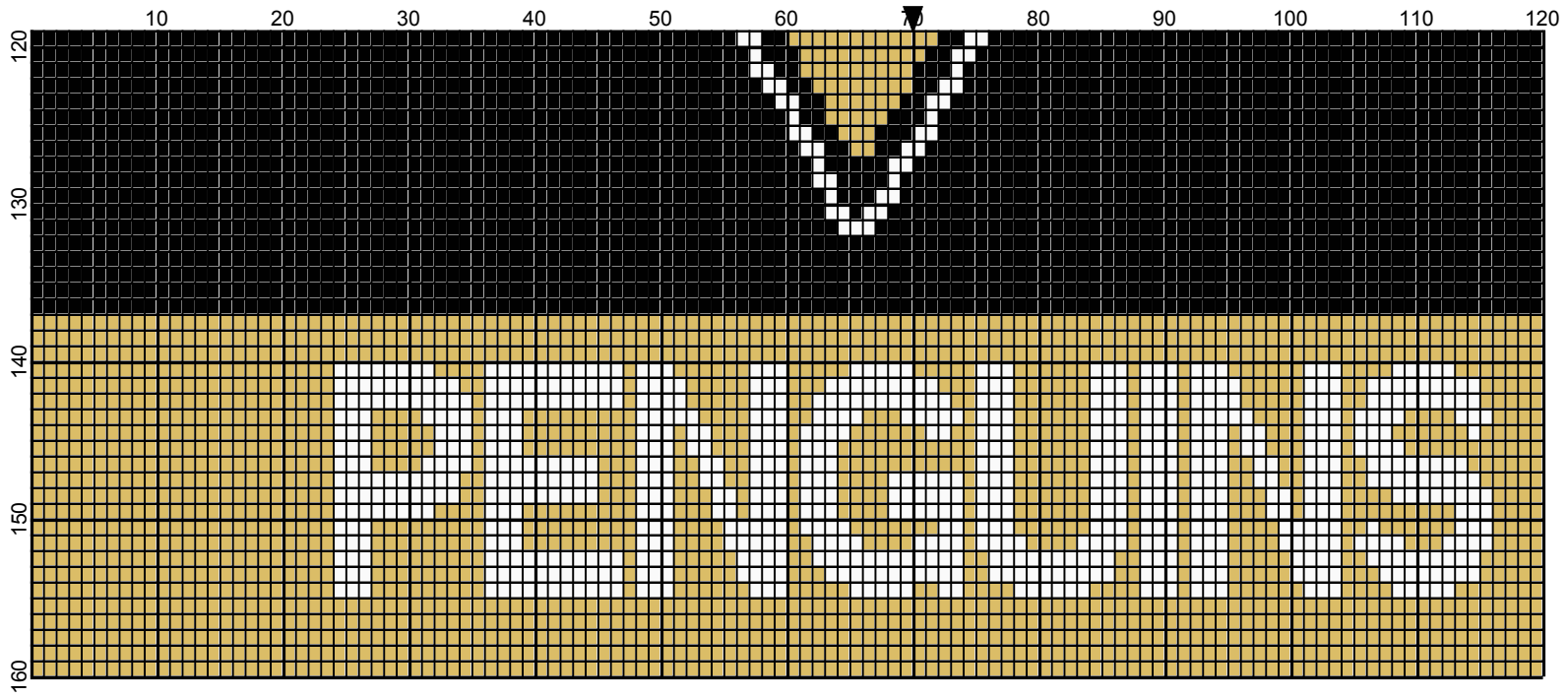


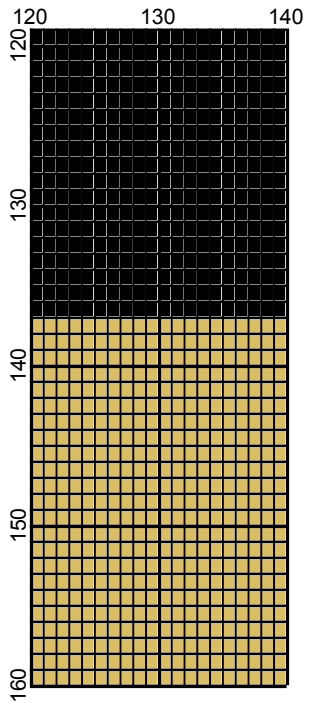
10 20 30 40 50 60 70 80 90 100 110 120

10
20
30
40
50
60
70
80
90
100
110









<No Title>

Author: Donna Hammell
Company: The Crochet Shoppe
Website: www.geocities.com/crochetshoppe/patterns.html
Grid Size: 140W x 160H
Design Area: 14.00" x 20.00" (140 x 160 stitches)

Legend: (001)

[2] rh001 White [2] RH645 Honey Gold [2] RH012 Black

Instructions for using the graph.

GAUGE= 5 STS = 1"
4 ROWS = 1"

I USED SIZE "H" AFGHAN HOOK,USE WHATEVER SIZE GIVES YOU THE CORRECT GAUGE. CAN BE DONE IN AFGHAN STITCH OR SINGLE CROCHET.

EACH SQUARE ON THE GRAPH REPRESENTS 1 STITCH. FOR SINGLE CROCHET READ THE CHART FROM RIGHT TO LEFT, AND THEN LEFT TO RIGHT. IF USING AFGHAN STITCH ALWAYS READ FROM THE RIGHT.

TO START: CHAIN ONE MORE STITCH THAN GRAPH.

YOU WILL NEED TO ADD STITCHES TO MAKE THE PIECE WIDER, AND ADD ROWS TO MAKE IT LONGER. THE DESIGN IS CENTERED, SO ADD STITCHES EVENLY TO BOTH SIDES.

ESTIMATED RED HEART YARN NEEDED:

BLACK ;14 OUNCES

WHITE:5 OUNCES

HONEY GOLD:9 OUNCES