

10

20

30

40

50

60

70



10

20

30

40

50

60

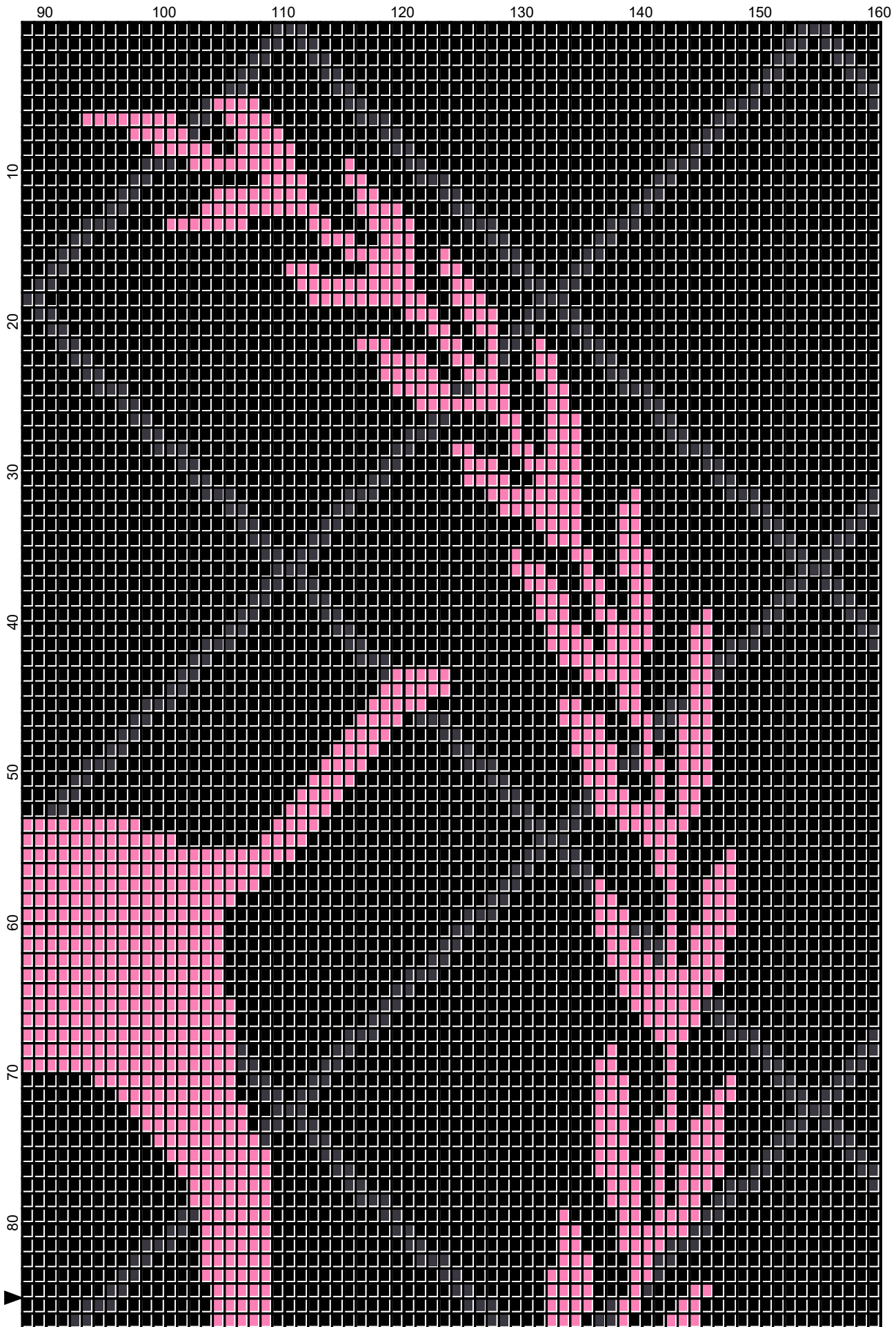
70

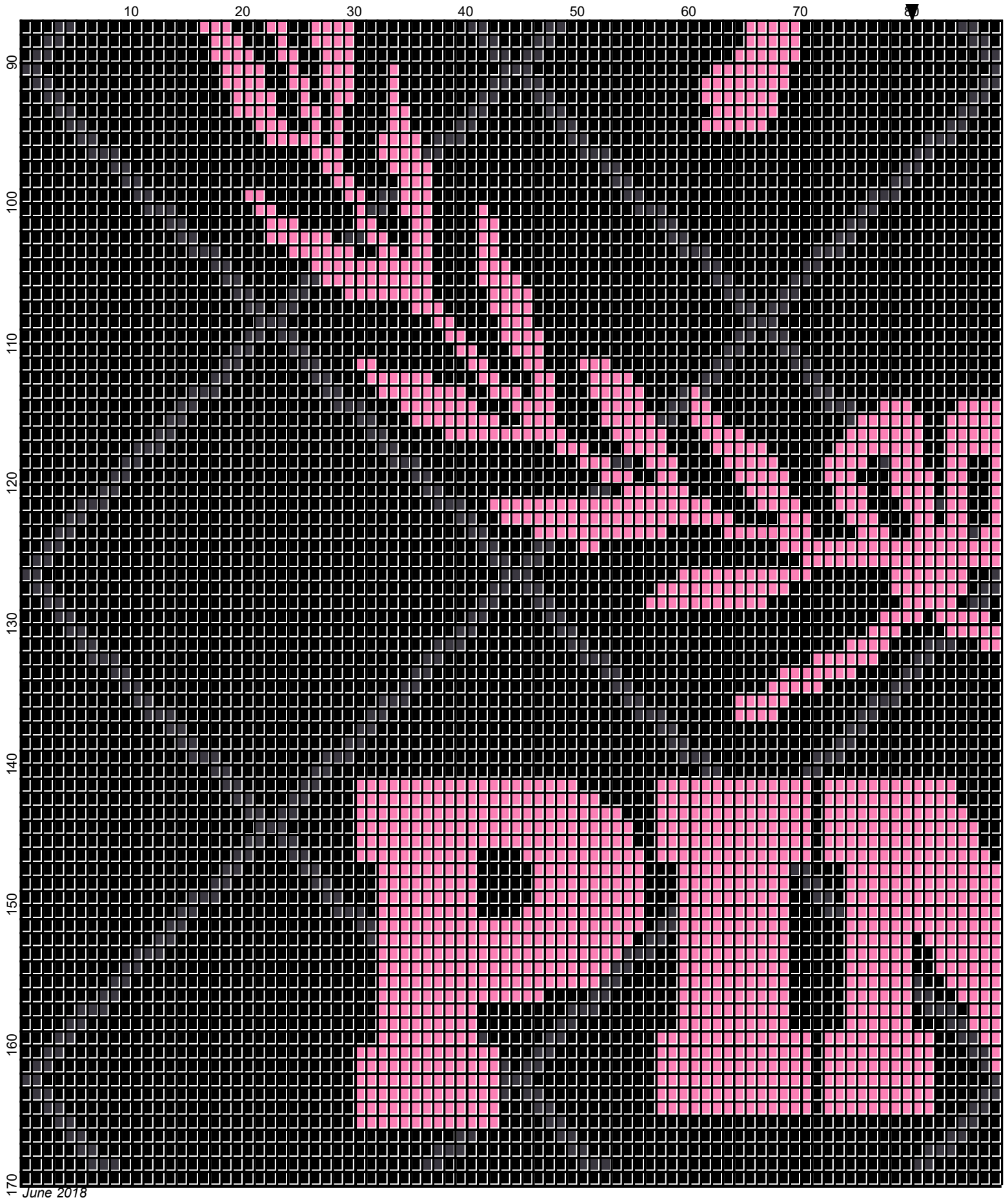
80



June 2018







June 2018



June 2018

pink_diamonds

Author: Donna Hammell
Company: Donna's Crochet Shoppe
Copyright: June 2018
Website: www.donnascrochetshoppe.com
Grid Size: 160W x 170H
Design Area: 16.00" x 21.25" (160 x 170 stitches)

Legend:

■ [2] RHS 3950 Charcoal ■ [2] RHS 312 Black ■ [2] RHS 722 Pretty N Pink

Instructions for using the graph.

GAUGE= 5 STS = 1"
4 ROWS = 1"

I USED SIZE "H" AFGHAN HOOK, USE WHATEVER SIZE GIVES YOU THE CORRECT GAUGE. CAN BE DONE IN AFGHAN STITCH OR SINGLE CROCHET.

EACH SQUARE ON THE GRAPH REPRESENTS 1 STITCH. FOR SINGLE CROCHET READ THE CHART FROM RIGHT TO LEFT, AND THEN LEFT TO RIGHT. IF USING AFGHAN STITCH ALWAYS READ FROM THE RIGHT.

TO START: CHAIN ONE MORE STITCH THAN GRAPH.

IF YOU NEED TO ADD STITCHES TO MAKE THE PIECE WIDER, AND ADD ROWS TO MAKE IT LONGER. THE DESIGN IS CENTERED, SO ADD STITCHES EVENLY TO BOTH SIDES.

ESTIMATED YARN NEEDED:

BLACK ; 26 OUNCES
CHARCOAL :3 OUNCES
PINK: 8 OUNCES