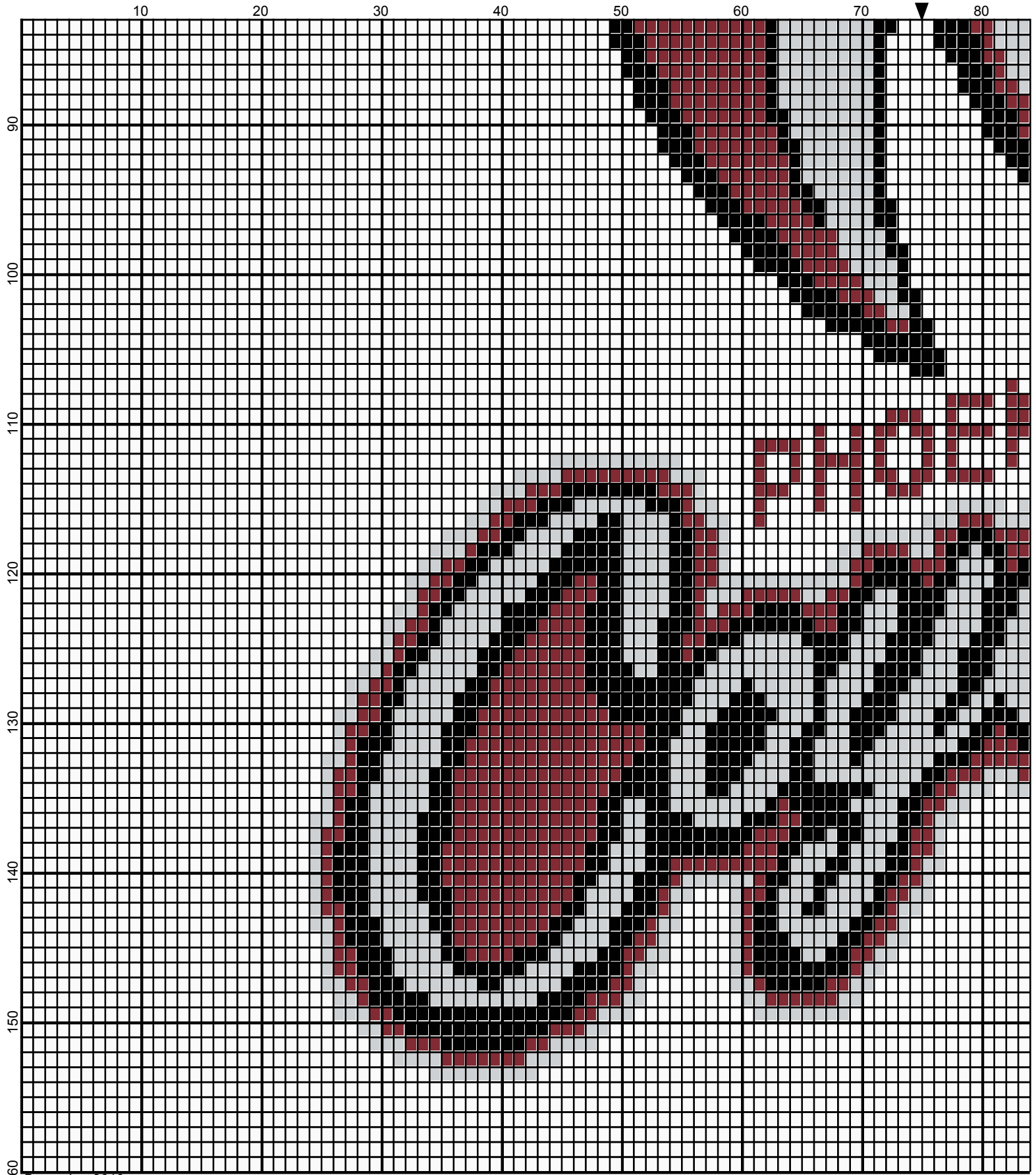
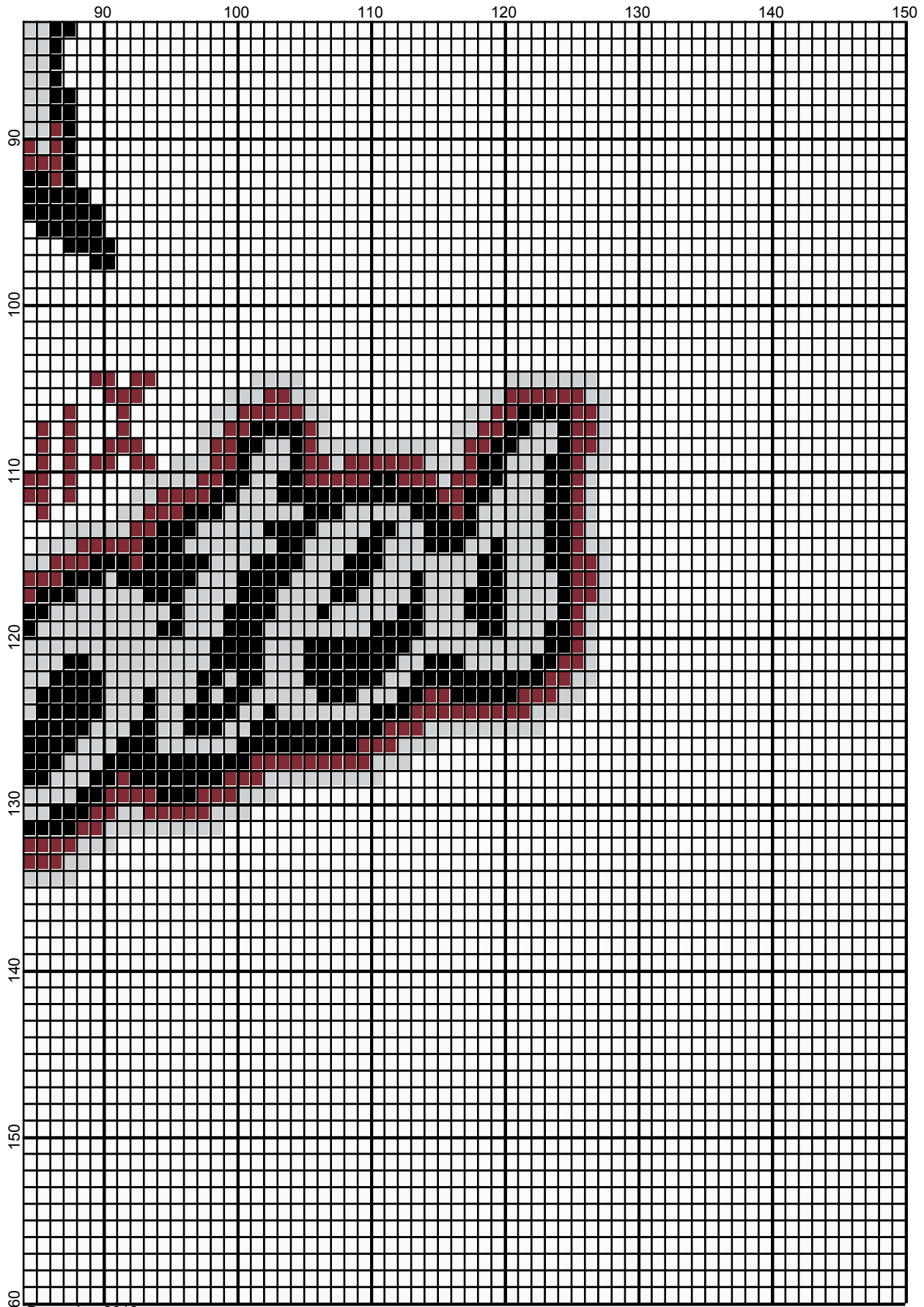


December 2010



December 2010



December 2010

Phoenix Coyotes 150 x 160

Author: Donna Hammell
Copyright: December 2010
Website: www.donnascrochetshoppe.com
Grid Size: 150W x 160H
Design Area: 15.00" x 20.00" (150 x 160 stitches)

Legend:

■ [2] 001 RH012 Black ■ [2] 001 RH917 Cardinal ■ [2] 001 RH412 Silver □ [2] 001 rh001 White

Instructions for using the graph.

GAUGE= 5 STS = 1"
4 ROWS = 1"

I USED SIZE "H" AFGHAN HOOK, USE WHATEVER SIZE GIVES YOU THE CORRECT GAUGE. CAN BE DONE IN AFGHAN STITCH OR SINGLE CROCHET.

EACH SQUARE ON THE GRAPH REPRESENTS 1 STITCH. FOR SINGLE CROCHET READ THE CHART FROM RIGHT TO LEFT, AND THEN LEFT TO RIGHT. IF USING AFGHAN STITCH ALWAYS READ FROM THE RIGHT.

TO START: CHAIN ONE MORE STITCH THAN GRAPH.

IF YOU NEED TO MAKE THE PIECE WIDER ADD AN EVEN NUMBER OF STITCHES TO BOTH SIDES, AND ADD ROWS TO MAKE IT LONGER. THE DESIGN IS CENTERED, SO ADD STITCHES EVENLY TO BOTH SIDES.

ESTIMATED YARN NEEDED:

BLACK: 3 OUNCES
WHITE: 17 OUNCES
SILVER: 3 OUNCES
CARDINAL: 3 OUNCES