

10

20

30

40

50



10

20

30

40

50



70

80

90

100

110

120

10

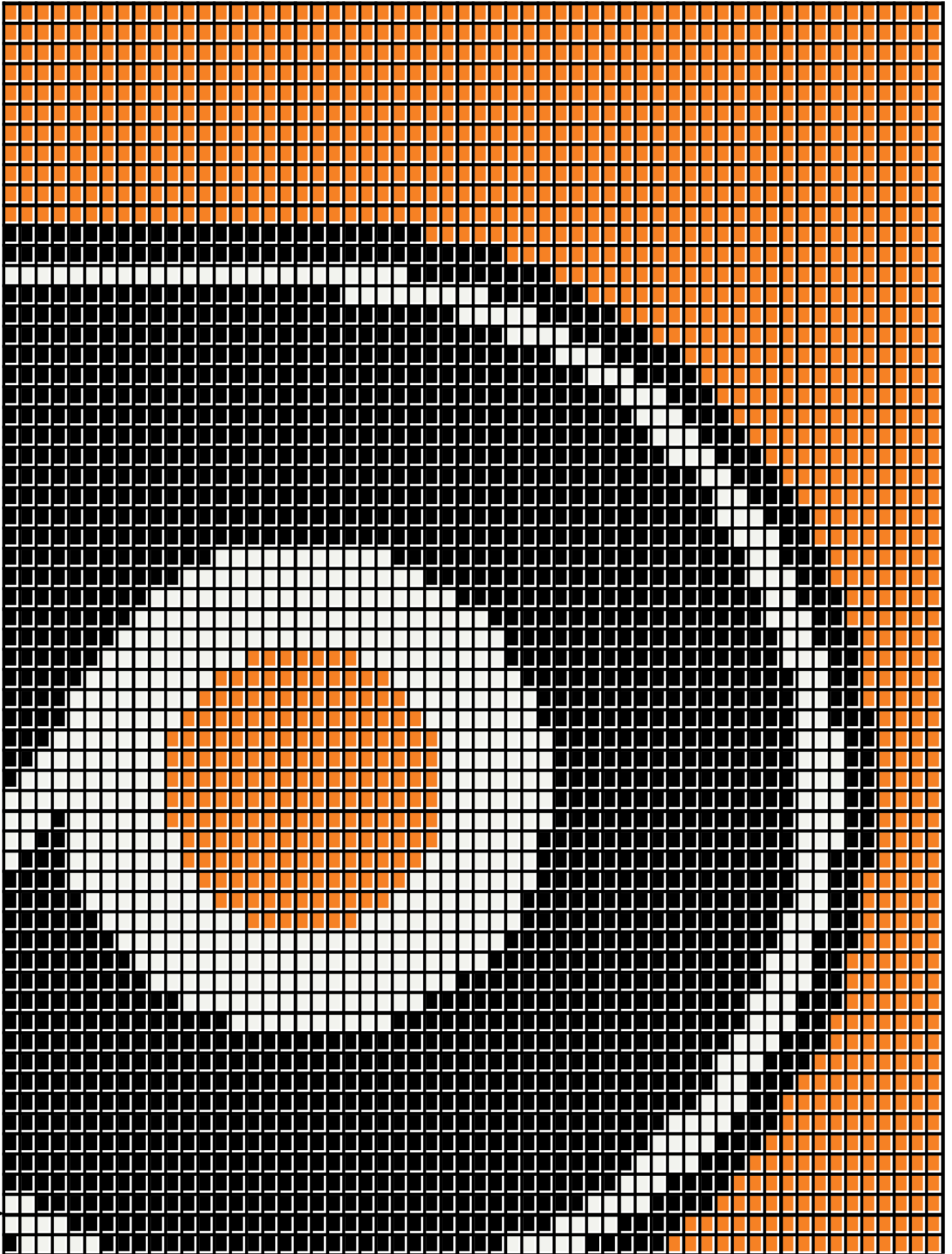
20

30

40

50

60





August 2017

70

80

90

100

110

120

70

80

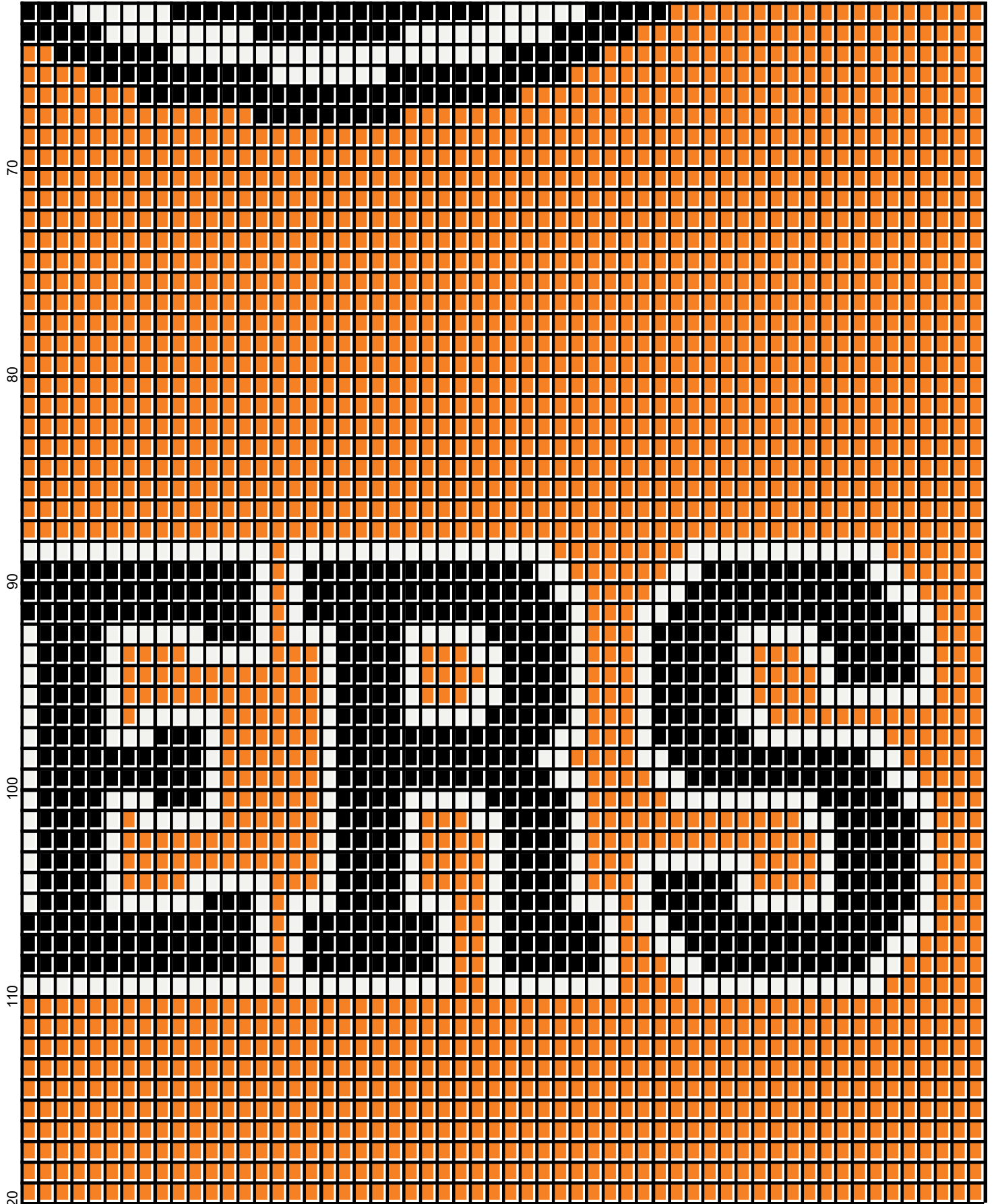
90

100

110

120




August 2017



philadelphia_flyers_120x120

Author: Donna Hammell
Company: Donna's Crochet Shoppe
Copyright: August 2017
Website: www.donnascrochetshoppe.com
Grid Size: 120W x 120H
Design Area: 12.00" x 15.00" (120 x 120 stitches)

Legend:

 [2] RHS 254 Pumpkin  [2] RHS 312 Black  [2] RHS 316 Soft White

Instructions for using the graph.

GAUGE= 5 STS = 1"
4 ROWS = 1"

I USED SIZE "H" AFGHAN HOOK, USE WHATEVER SIZE GIVES YOU THE CORRECT GAUGE. CAN BE DONE IN AFGHAN STITCH OR SINGLE CROCHET.

EACH SQUARE ON THE GRAPH REPRESENTS 1 STITCH. FOR SINGLE CROCHET READ THE CHART FROM RIGHT TO LEFT, AND THEN LEFT TO RIGHT. IF USING AFGHAN STITCH ALWAYS READ FROM THE RIGHT.

TO START: CHAIN ONE MORE STITCH THAN GRAPH.

IF YOU NEED TO MAKE THE PIECE WIDER ADD AN EVEN NUMBER OF STITCHES TO BOTH SIDES, AND ADD ROWS TO MAKE IT LONGER. THE DESIGN IS CENTERED, SO ADD STITCHES EVENLY TO BOTH SIDES.

ESTIMATED YARN NEEDED:

BLACK: 8 OUNCES
PUMPKIN/ORANGE: 10 OUNCES
WHITE: 4 OUNCES