



Legend:
■ RHS-312 □ RHS-316

peso_pluma_140x160

Author: Donna Hammell
Copyright: October 2023
Website: www.donnascrochetshoppe.com
Grid Size: 140W x 160H
Design Area: 14.00" x 20.00" (140 x 160 stitches)

Legend:

■ [2] RHS 312 Black □ [2] RHS 316 Soft White

Instructions for using the graph.

GAUGE= 4 STS = 1"
3 ROWS = 1"

I USED SIZE "H" AFGHAN HOOK, USE WHATEVER SIZE GIVES YOU THE CORRECT GAUGE. CAN BE DONE IN AFGHAN STITCH OR HALF DOUBLE CROCHET.

EACH SQUARE ON THE GRAPH REPRESENTS 1 STITCH. FOR SINGLE CROCHET READ THE CHART FROM RIGHT TO LEFT, AND THEN LEFT TO RIGHT. IF USING AFGHAN STITCH ALWAYS READ FROM THE RIGHT.

TO START: CHAIN ONE MORE STITCH THAN GRAPH.

IF YOU NEED TO MAKE THE PIECE WIDER ADD AN EVEN NUMBER OF STITCHES TO BOTH SIDES, AND ADD ROWS TO MAKE IT LONGER. THE DESIGN IS CENTERED, SO ADD STITCHES EVENLY TO BOTH SIDES.

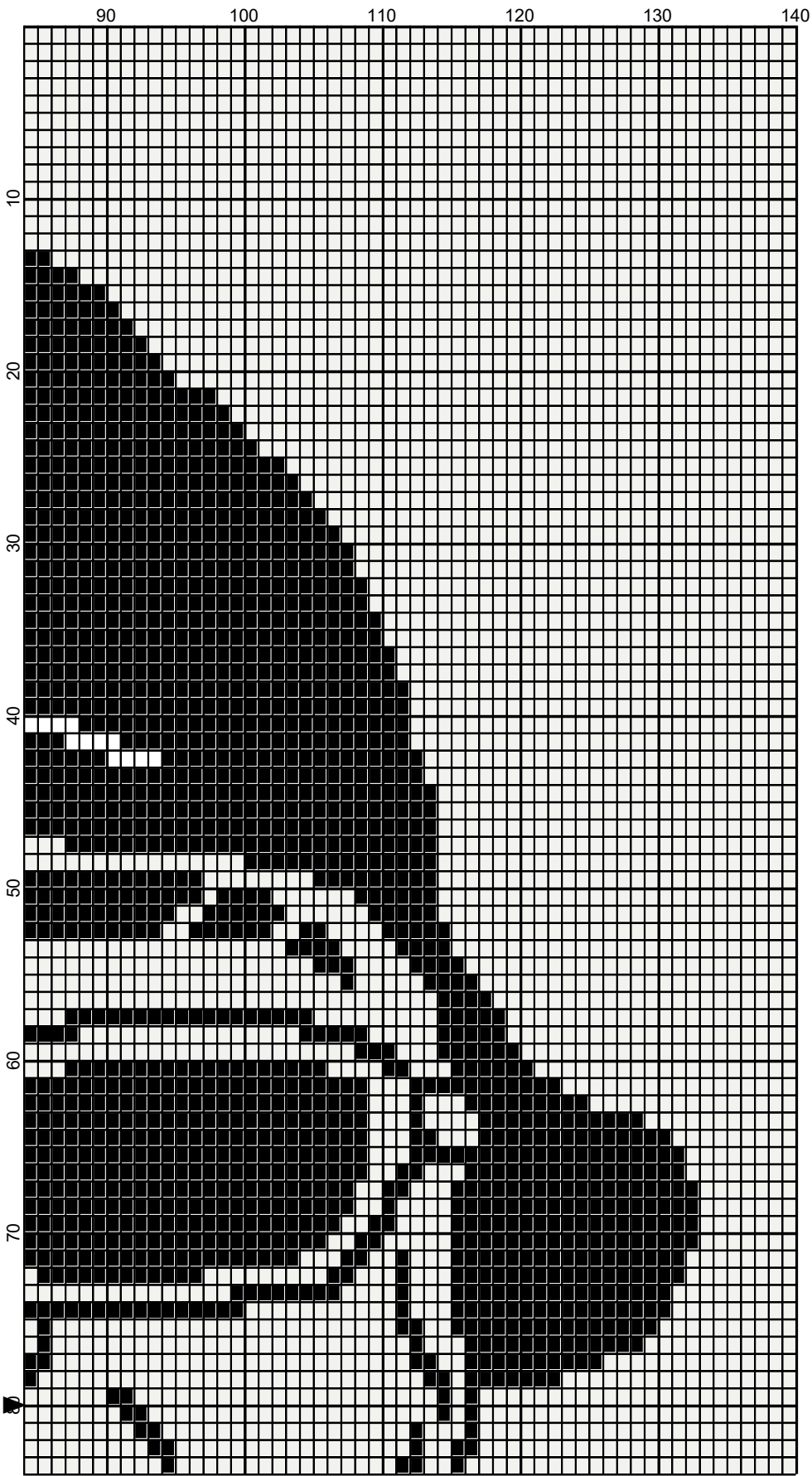
ESTIMATED RED SUPER SAVER YARN NEEDED:

WHITE: 1010 YDS

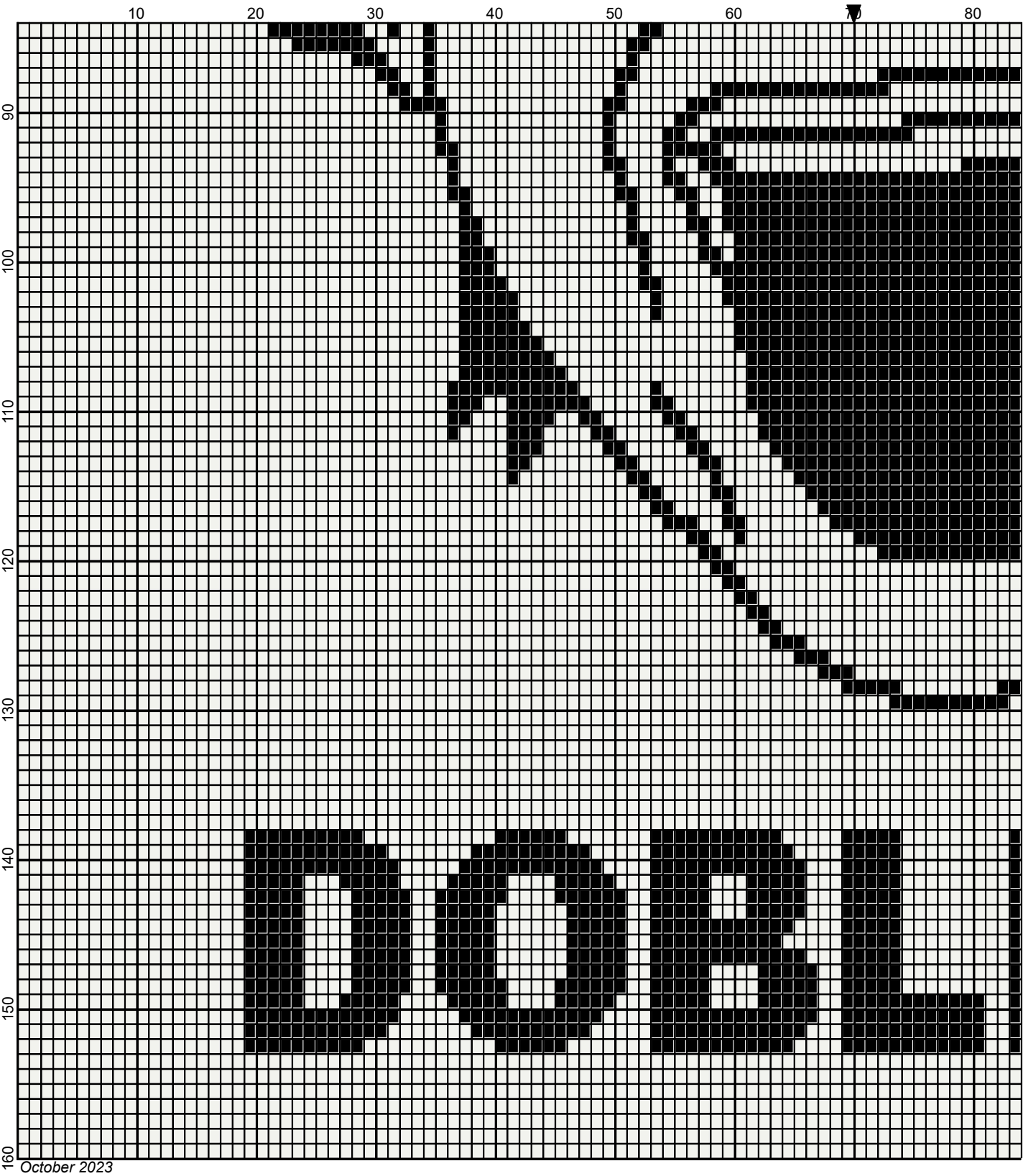
BLACK: 1010 YDS



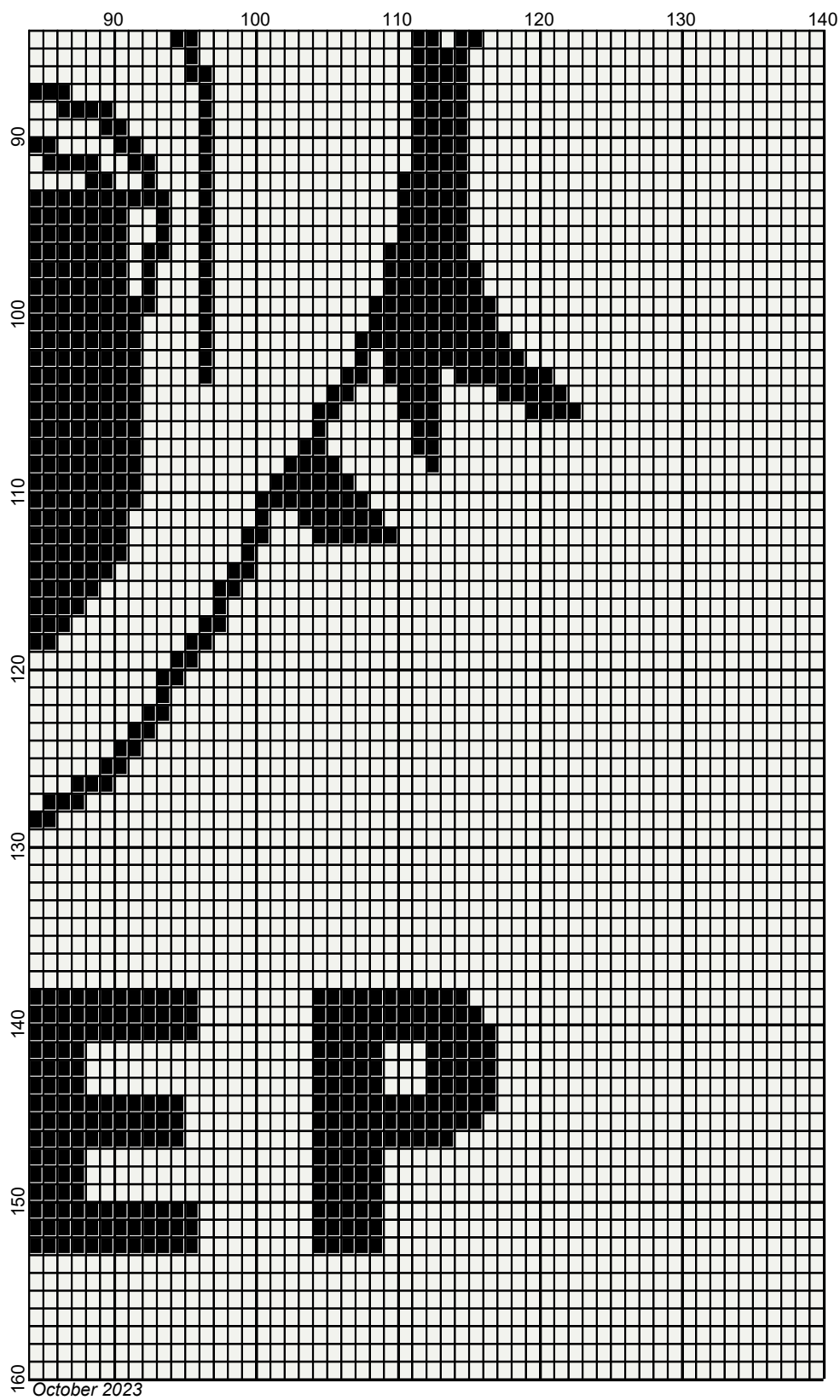
October 2023



October 2023



Legend:



■ RHS-312 □ RHS-316