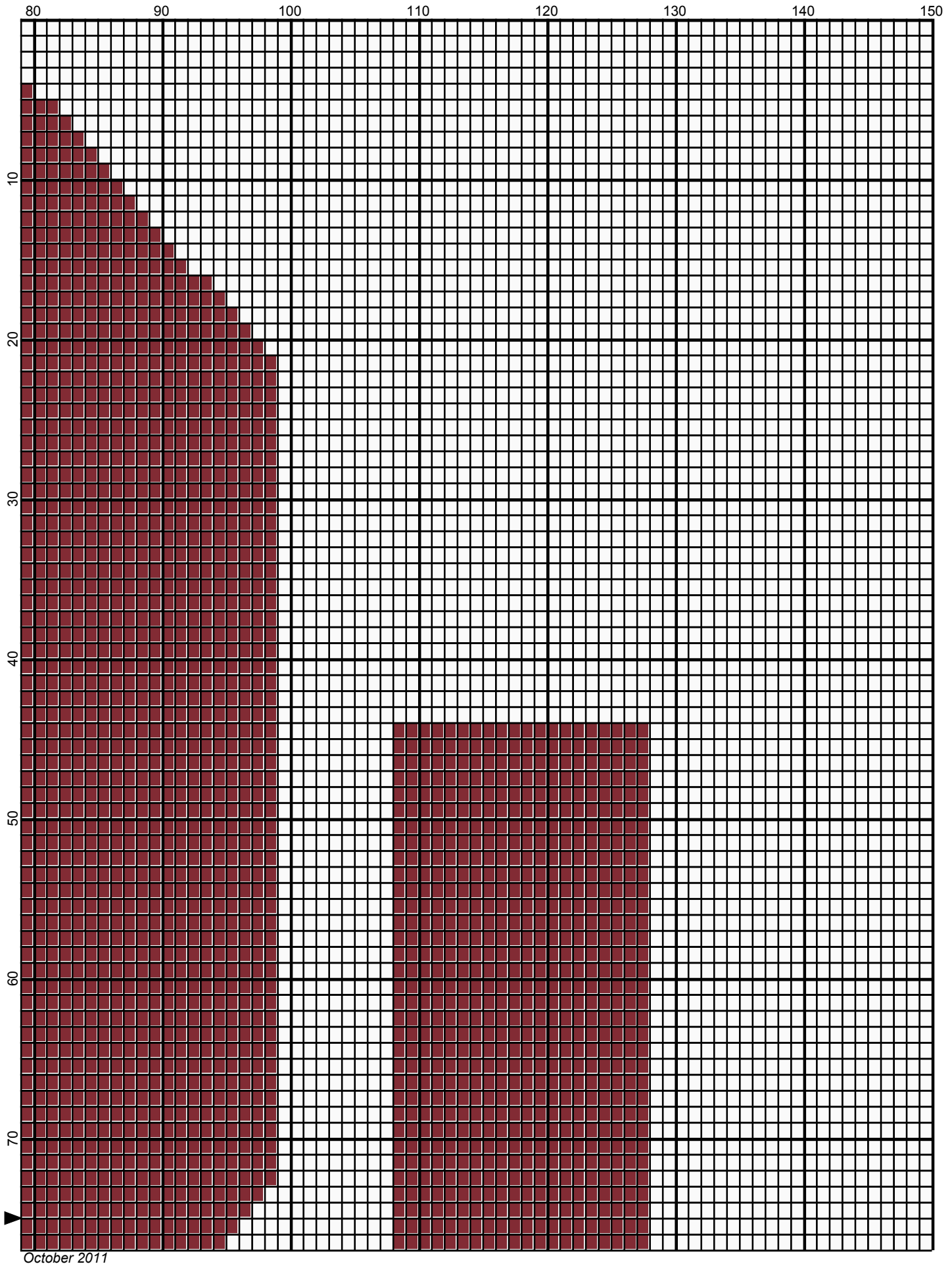
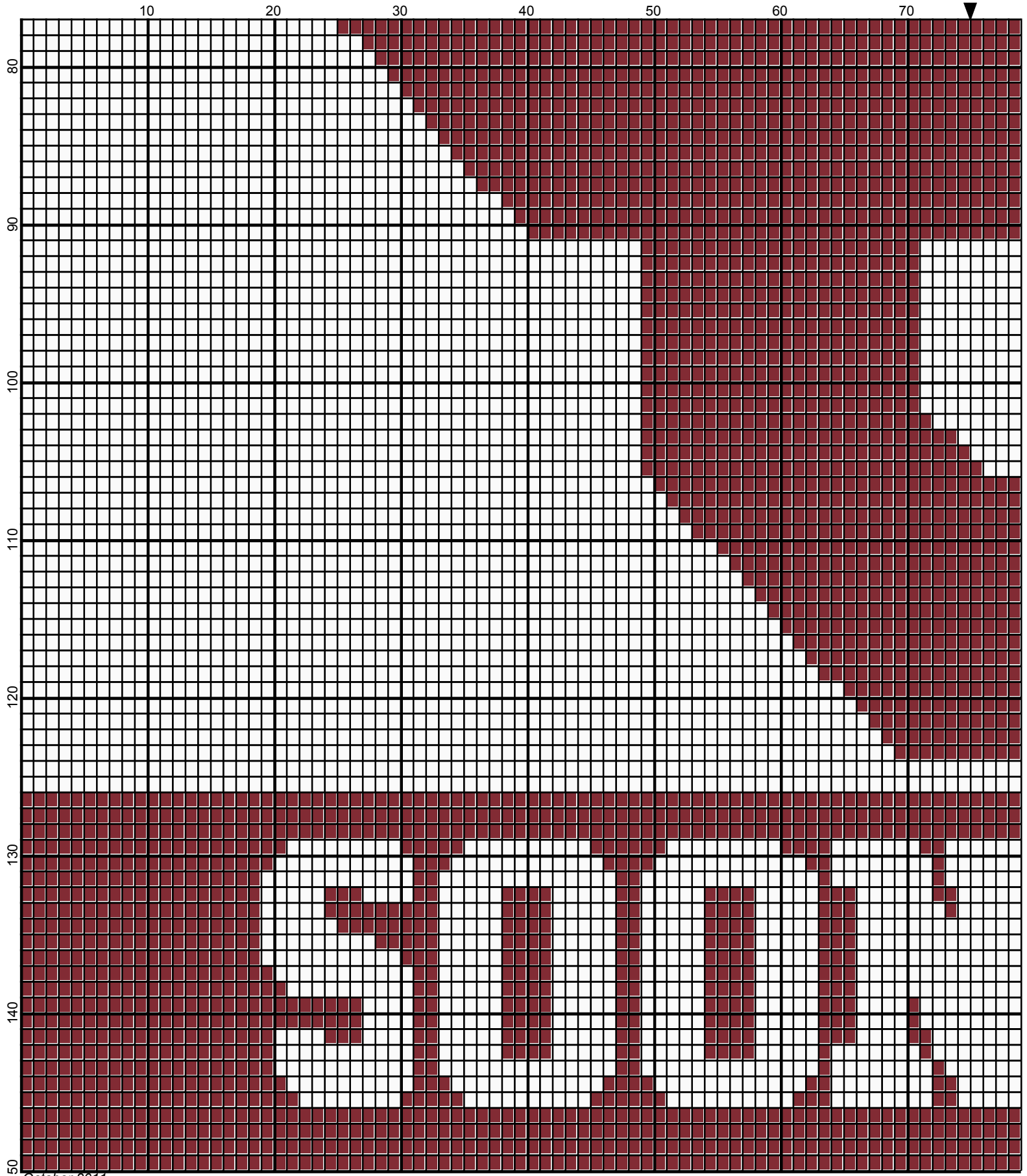


October 2011



October 2011



10

20

30

40

50

60

70

80

90

100

110

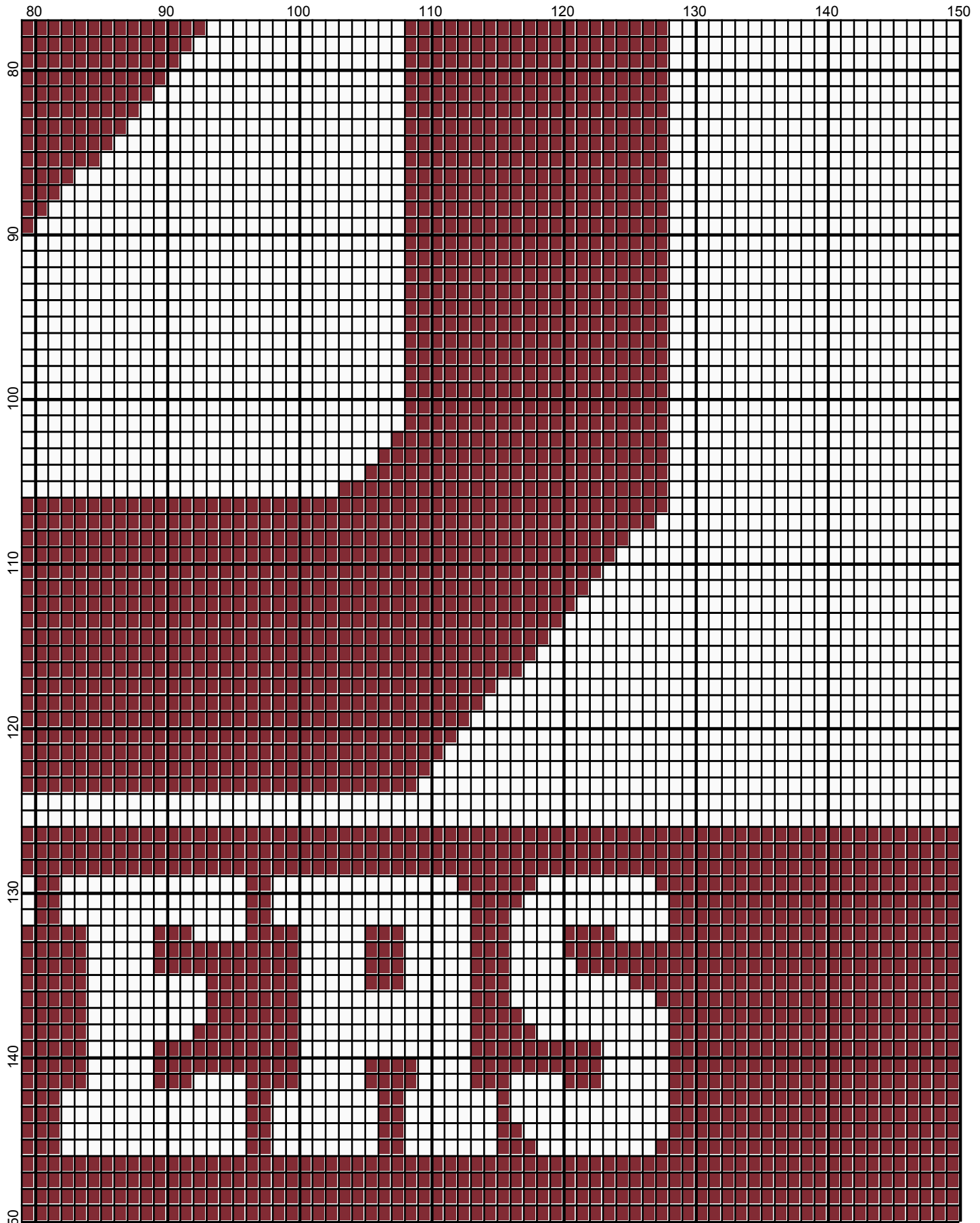
120

130

140

150

October 2011



October 2011

oklahoma_sooners

Author: Donna Hammell
Copyright: October 2011
Website: www.donnascrochetshoppe.com
Grid Size: 150W x 150H
Design Area: 15.00" x 18.75" (150 x 150 stitches)

Legend:

□ [2] 001 rh001 White ■ [2] 001 RH917 Cardinal

GAUGE= 5 STS = 1"
4 ROWS = 1"

I USED SIZE "H" AFGHAN HOOK, USE WHATEVER SIZE GIVES YOU THE CORRECT GAUGE. CAN BE DONE IN AFGHAN STITCH OR SINGLE CROCHET.

EACH SQUARE ON THE GRAPH REPRESENTS 1 STITCH. FOR SINGLE CROCHET READ THE CHART FROM LEFT TO RIGHT. IF USING AFGHAN STITCH ALWAYS READ FROM THE RIGHT.

TO START: FOR SINGLE CROCHET CHAIN ONE MORE STITCH THAN GRAPH. FOR AFGHAN STITCH, CHAIN EXACT NUMBER

APPROXIMATE YARN USAGE

CARDINAL: 10 OUNCES

WHITE: 13 OUNCES