



March 2024




Legend:

■ RHS-390 ■ RHS-385 □ RHS-316

ny_rangers_156x165

Author: Donna Hammell
Copyright: March 2024
Website: www.donnacrochetshoppe.com
Grid Size: 156W x 165H
Design Area: 15.60" x 20.63" (156 x 165 stitches)

Legend:

 [2] RHS 390 Hot Red  [2] RHS 385 Royal  [2] RHS 316 Soft White

DESIGNED FOR HALF DOUBLE CROCHET

GAUGE WITH AN "I" HOOK:
13 STITCHES= 4"
11 ROWS= 4"

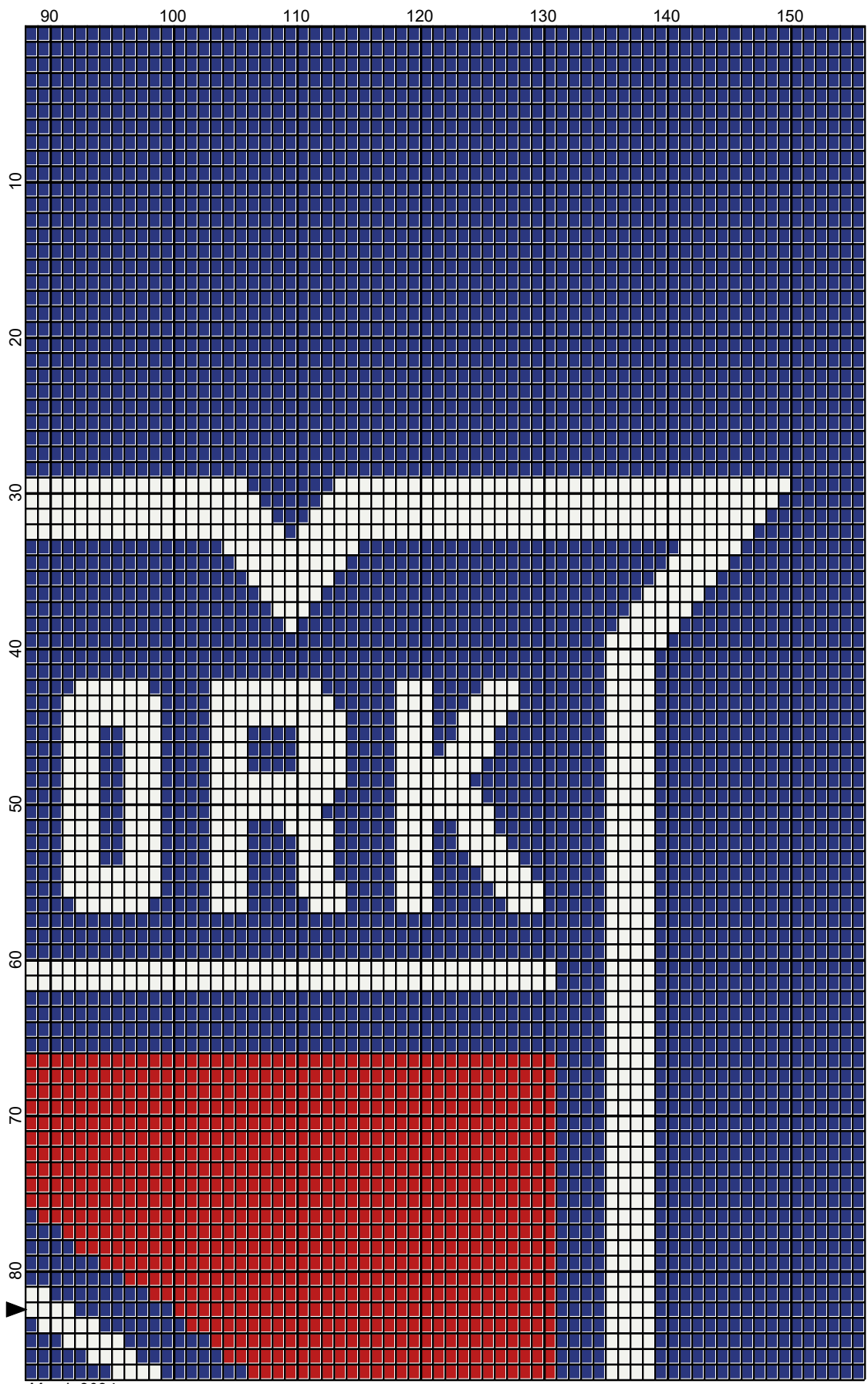
CHAIN 157 ROYAL
CHAIN 1 AT END OF EACH ROW.(DOES NOT COUNT AS YOUR FIRST STITCH)

ESTIMATED YARN NEEDED:
ROYAL BLUE: 1235 YDS/26 OUNCES
WHITE:372 YDS/8 OUNCES
RED: 68 YDS/2 OUNCES

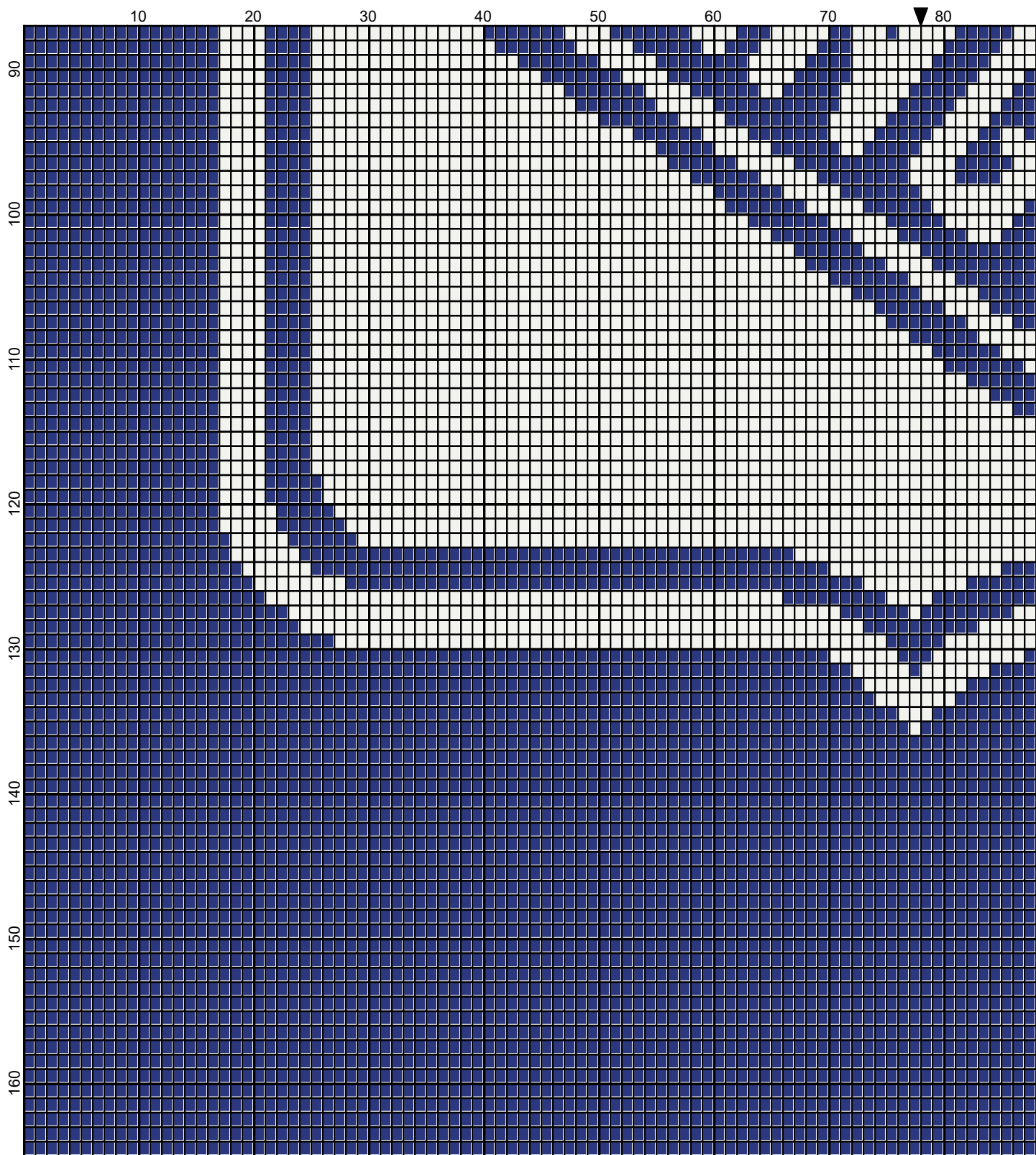


10 20 30 40 50 60 70 80

10
20
30
40
50
60
70
80

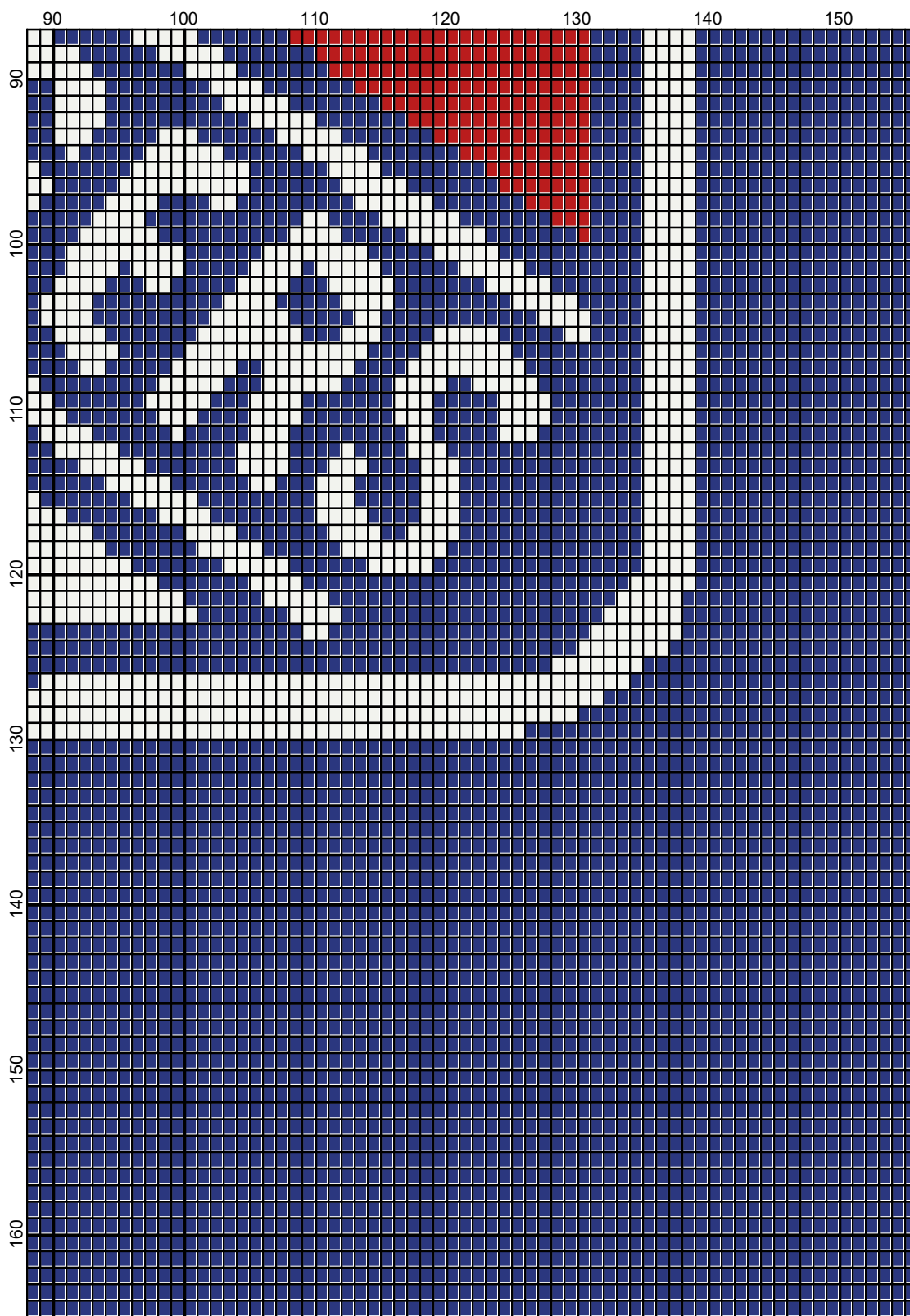


March 2024



March 2024

Legend:



March 2024

■ RHS-390 ■ RHS-385 □ RHS-316