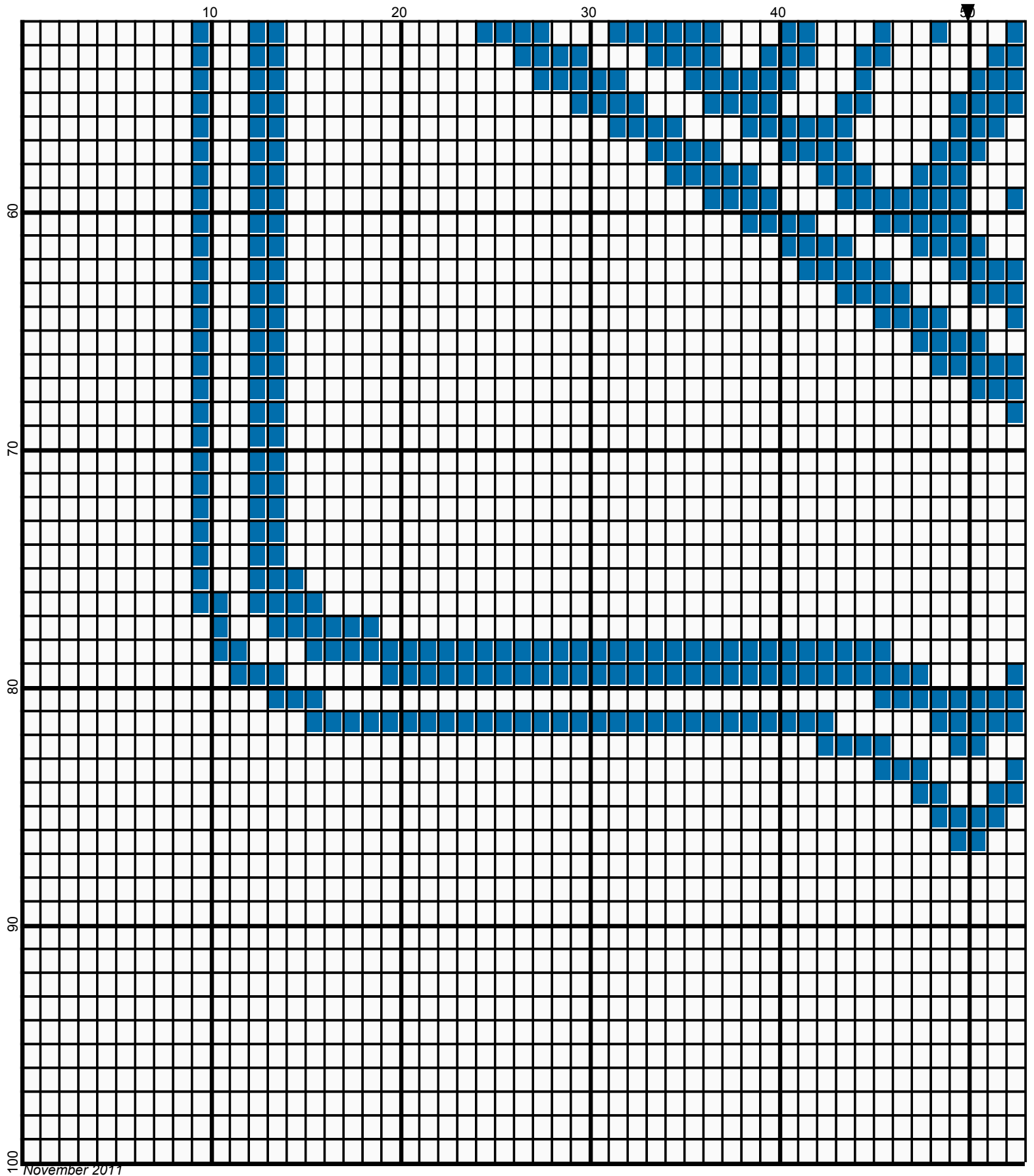
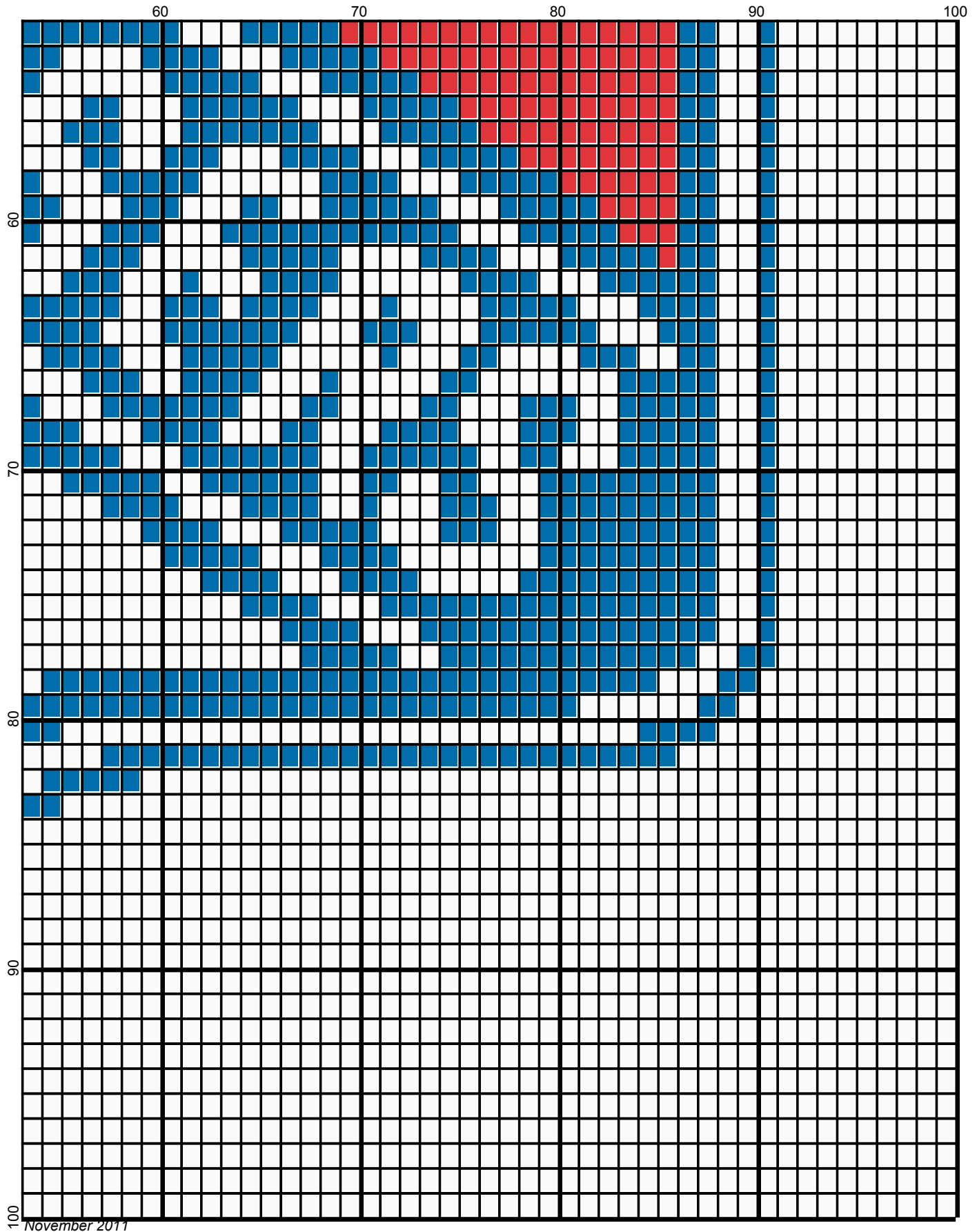


November 2011





November 2011

ny_rangers_100x100

Author: Donna Hammell
Copyright: November 2011
Website: www.donnascrochetshoppe.com
Grid Size: 100W x 100H
Design Area: 10.00" x 12.50" (100 x 100 stitches)

Legend:

 [2] 001 RH902 Jockey Red  [2] 001 RH822 True Blue  [2] 001 rh001 White

Instructions for using the graph.

GAUGE= 5 STS = 1"
4 ROWS = 1"

I USED SIZE "H" AFGHAN HOOK, USE WHATEVER SIZE GIVES YOU THE CORRECT GAUGE. CAN BE DONE IN AFGHAN STITCH OR SINGLE CROCHET.

EACH SQUARE ON THE GRAPH REPRESENTS 1 STITCH. FOR SINGLE CROCHET READ THE CHART FROM LEFT TO RIGHT. IF USING AFGHAN STITCH ALWAYS READ FROM THE RIGHT.

TO START: FOR SINGLE CROCHET CHAIN ONE MORE STITCH THAN GRAPH. FOR AFGHAN STITCH, CHAIN EXACT NUMBER

APPROXIMATE YARN USAGE

BLUE: 3 OUNCES
WHITE : 7 OUNCES
RED: 1 OUNCE