



February 2025

Legend:
RHS-312 RHS-316 RHS-387

northwestern_university_160x160

Author: Donna Hammell
Copyright: February 2025
Website: www.donnascrochetshoppe.com
Grid Size: 160W x 160H
Design Area: 16.00" x 20.00" (160 x 160 stitches)

Legend:

■ [2] RHS 312 Black □ [2] RHS 316 Soft White ■ [2] RHS 387 Soft navy

Instructions for using the graph.

GAUGE= 5 STS = 1"
4 ROWS = 1"

I USED SIZE "H" AFGHAN HOOK,USE WHATEVER SIZE GIVES YOU THE CORRECT GAUGE. CAN BE DONE IN AFGHAN STITCH OR SINGLE CROCHET.

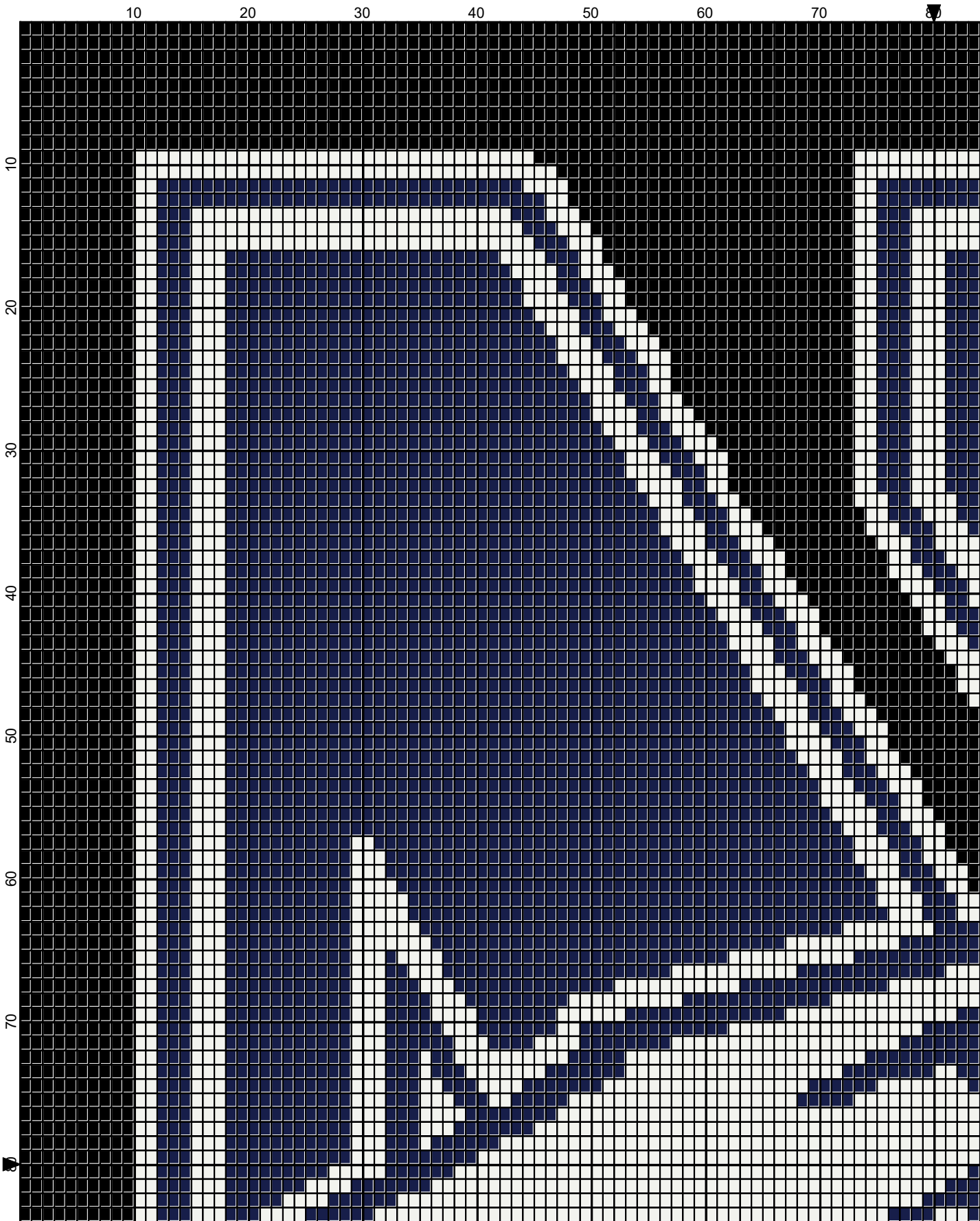
EACH SQUARE ON THE GRAPH REPRESENTS 1 STITCH. FOR SINGLE CROCHET READ THE CHART FROM RIGHT TO LEFT, AND THEN LEFT TO RIGHT. IF USING AFGHAN STITCH ALWAYS READ FROM THE RIGHT.

TO START: CHAIN ONE MORE STITCH THAN GRAPH.

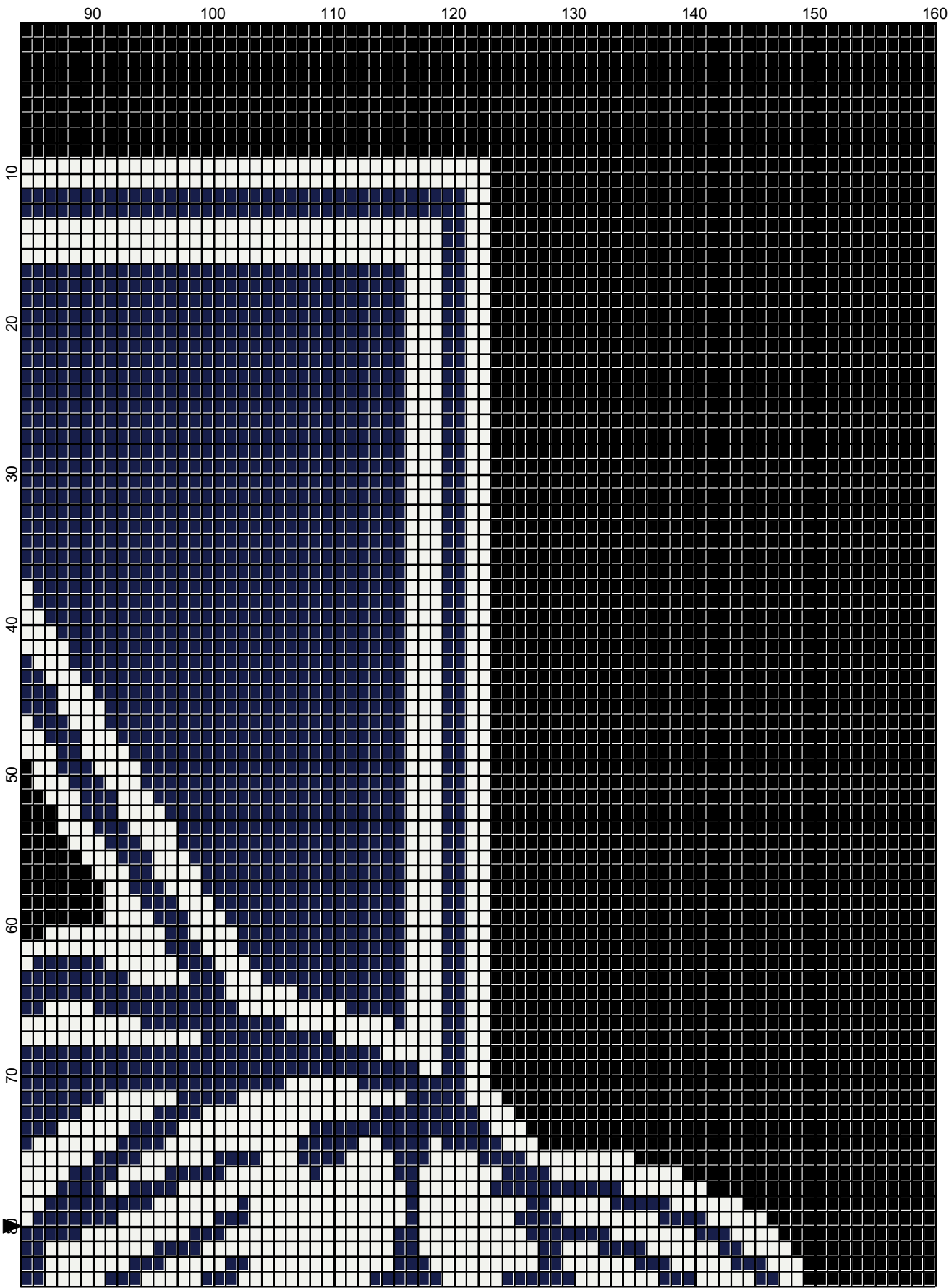
IF YOU NEED TO MAKE THE PIECE WIDER ADD AN EVEN NUMBER OF STITCHES TO BOTH SIDES, AND ADD ROWS TO MAKE IT LONGER. THE DESIGN IS CENTERED, SO ADD STITCHES EVENLY TO BOTH SIDES.

ESTIMATED YARN NEEDED:

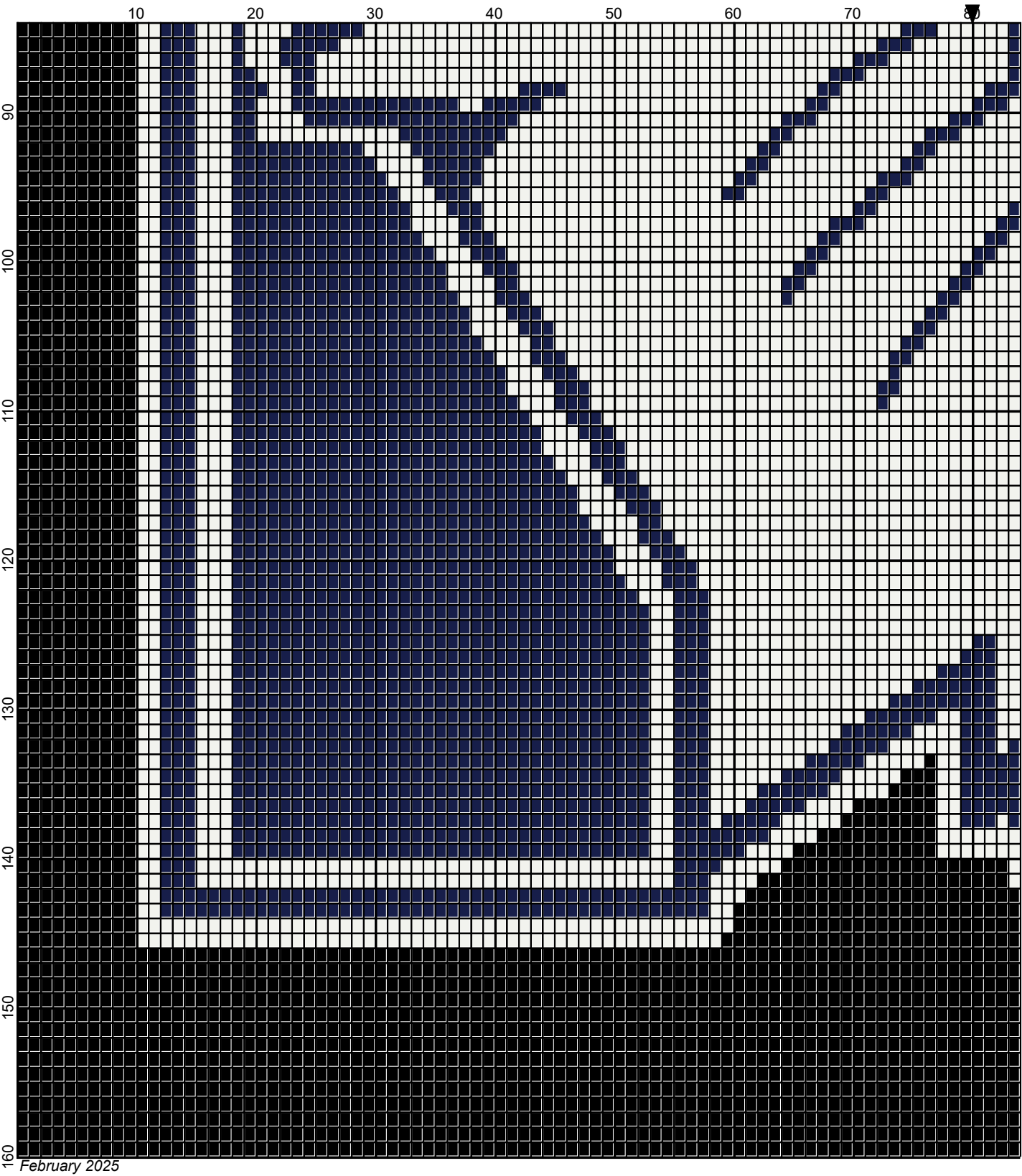
WHITE:6 OUNCES/425 YDS
BLACK: 14 OUNCES/670 YDS
SOFT NAVY:12 OUNCES/550 YDS



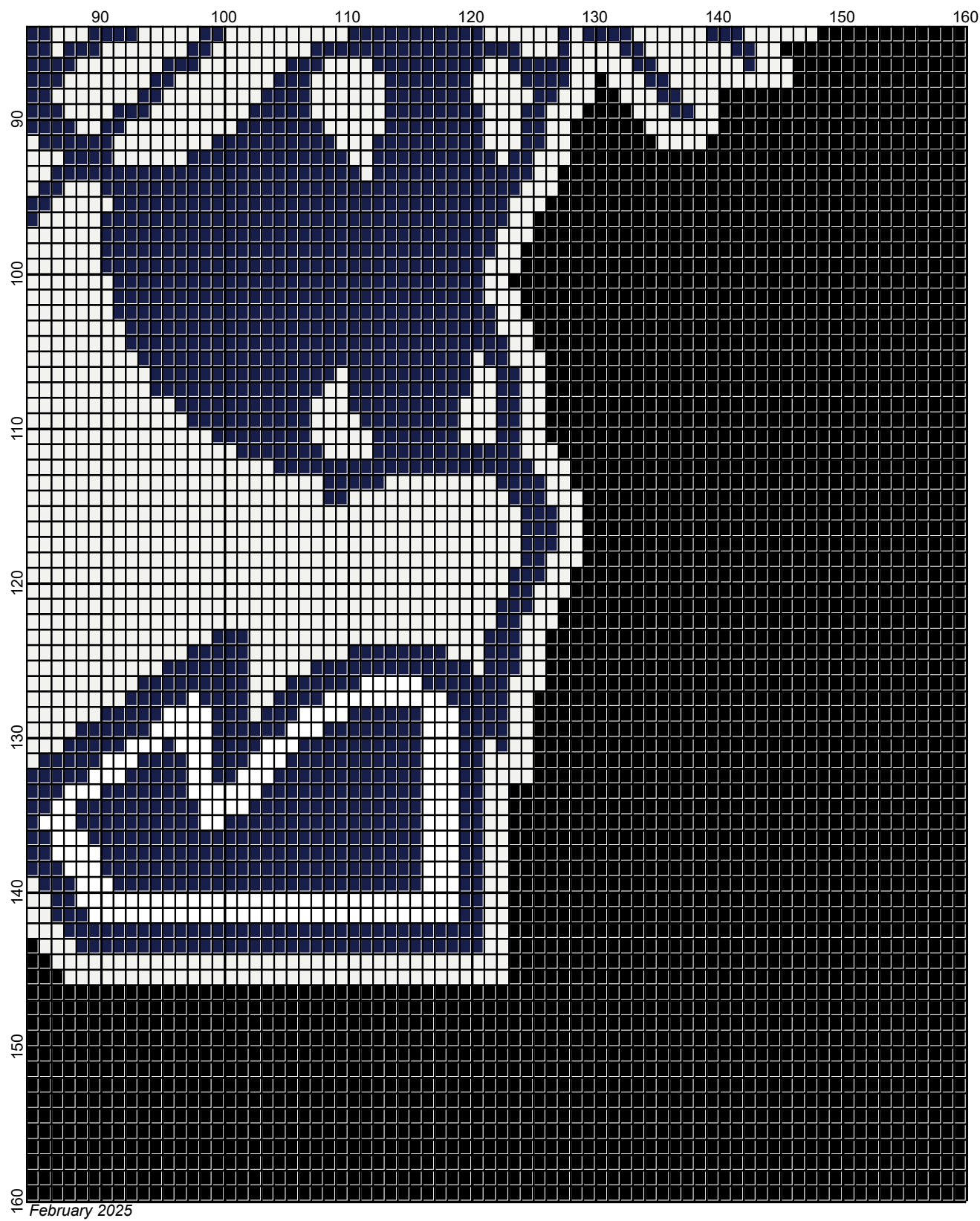
February 2025



February 2025



Legend:



■ RHS-312 □ RHS-316 ■ RHS-387