

10

20

30

40

50

60

70

10

20

30

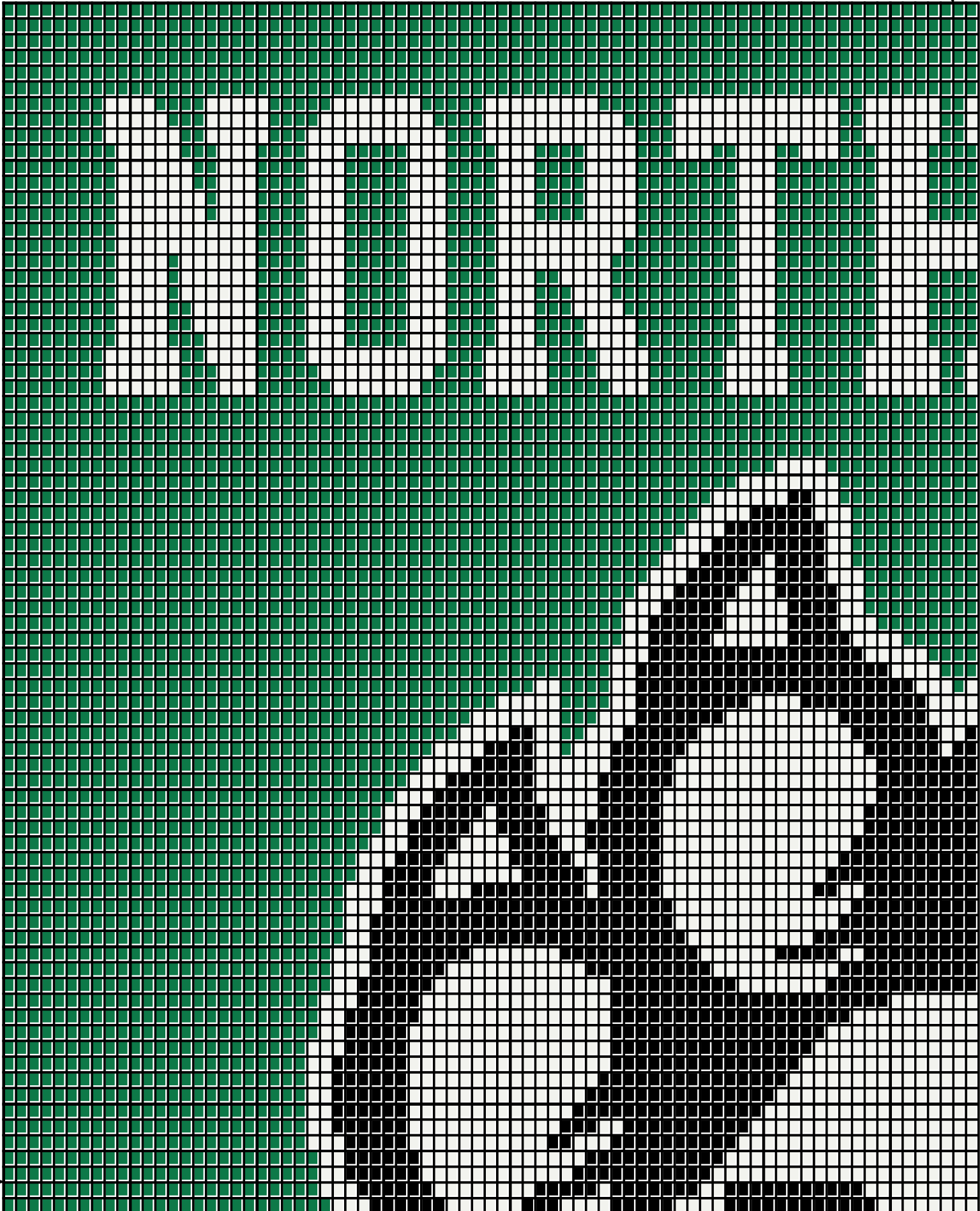
40

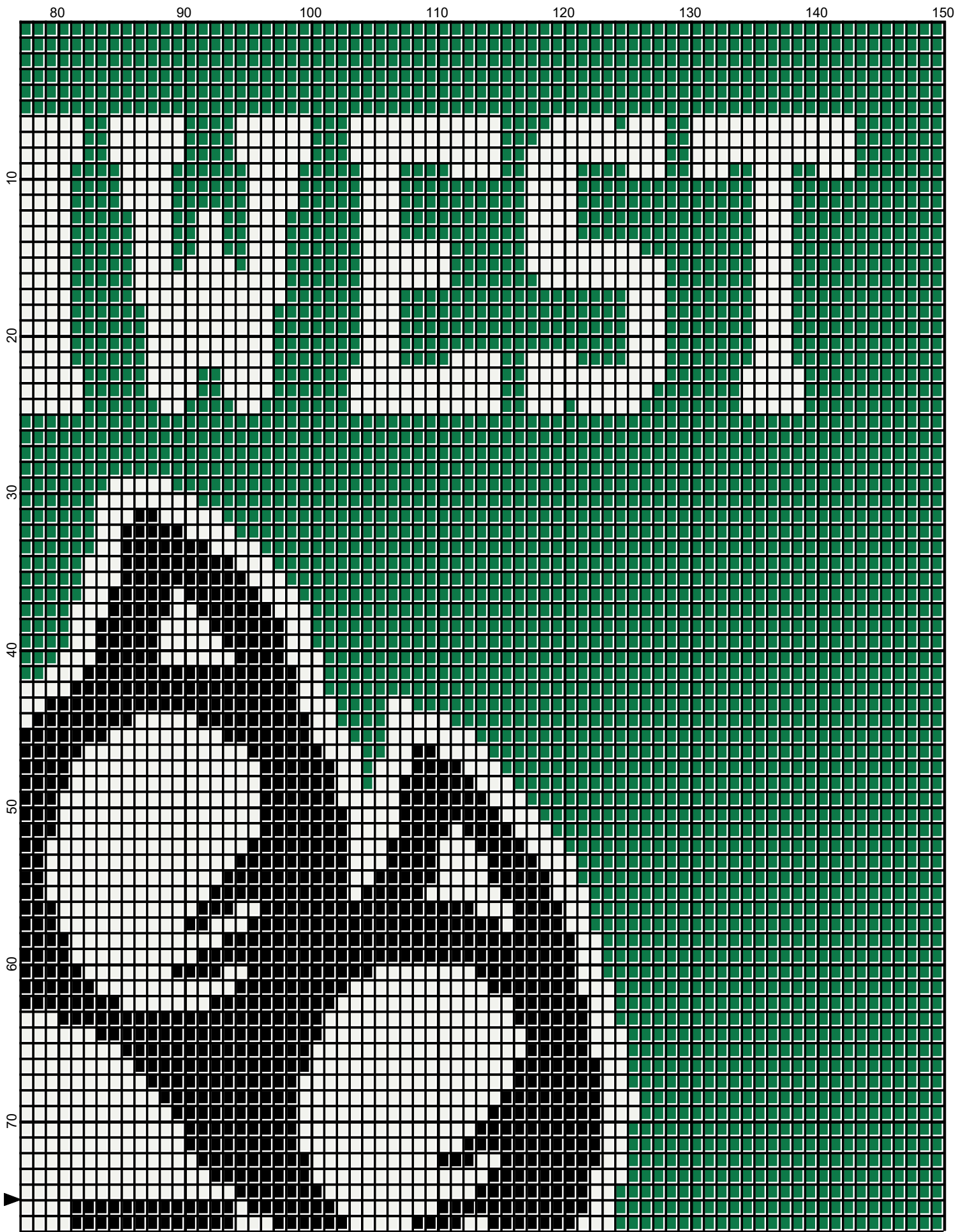
50

60

70

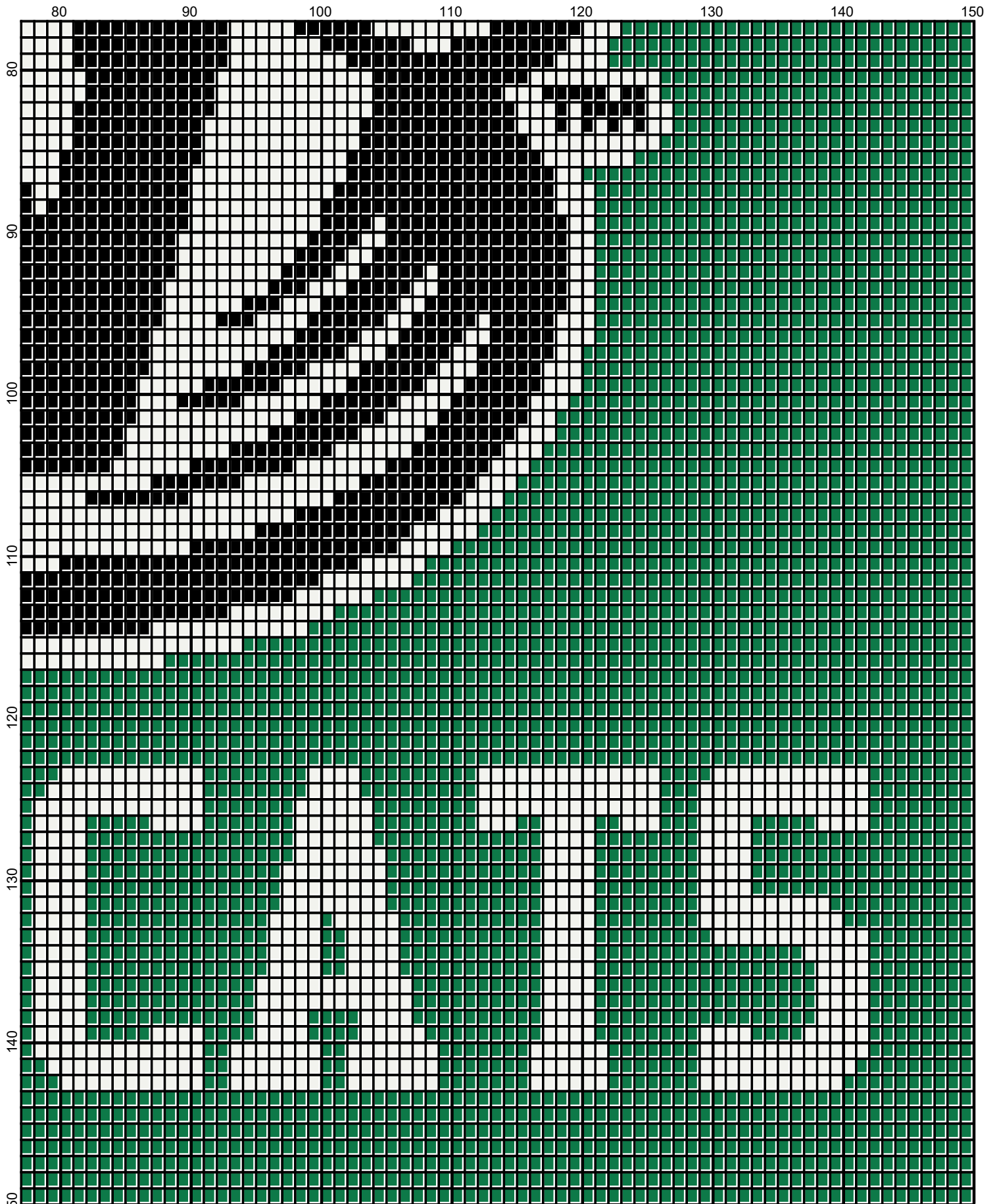
April 2018







April 2018



April 2018

# northwest\_bearcats\_150x150

---

**Author:** Donna Hammell  
**Company:** Donna's Crochet Shoppe  
**Copyright:** April 2018  
**Website:** www.donnascrochetshoppe.com  
**Grid Size:** 150W x 150H  
**Design Area:** 15.00" x 18.75" (150 x 150 stitches)

**Legend:**  
■ [2] RHS 312 Black      □ [2] RHS 316 Soft White      ■ [2] RHS 368 Paddy Green

Instructions for using the graph.

GAUGE= 5 STS = 1"  
4 ROWS = 1"

I USED SIZE "H" AFGHAN HOOK,USE WHATEVER SIZE GIVES YOU THE CORRECT GAUGE. CAN BE DONE IN AFGHAN STITCH OR HALF DOUBLE OR SINGLE CROCHET.

EACH SQUARE ON THE GRAPH REPRESENTS 1 STITCH. FOR SINGLE CROCHET READ THE CHART FROM RIGHT TO LEFT, AND THEN LEFT TO RIGHT. IF USING AFGHAN STITCH ALWAYS READ FROM THE RIGHT.

TO START: CHAIN ONE MORE STITCH THAN GRAPH

ESTIMATED YARN  
WHITE: 8 OUNCES  
BLACK: 6 OUNCES  
GREEN: 18 OUNCES