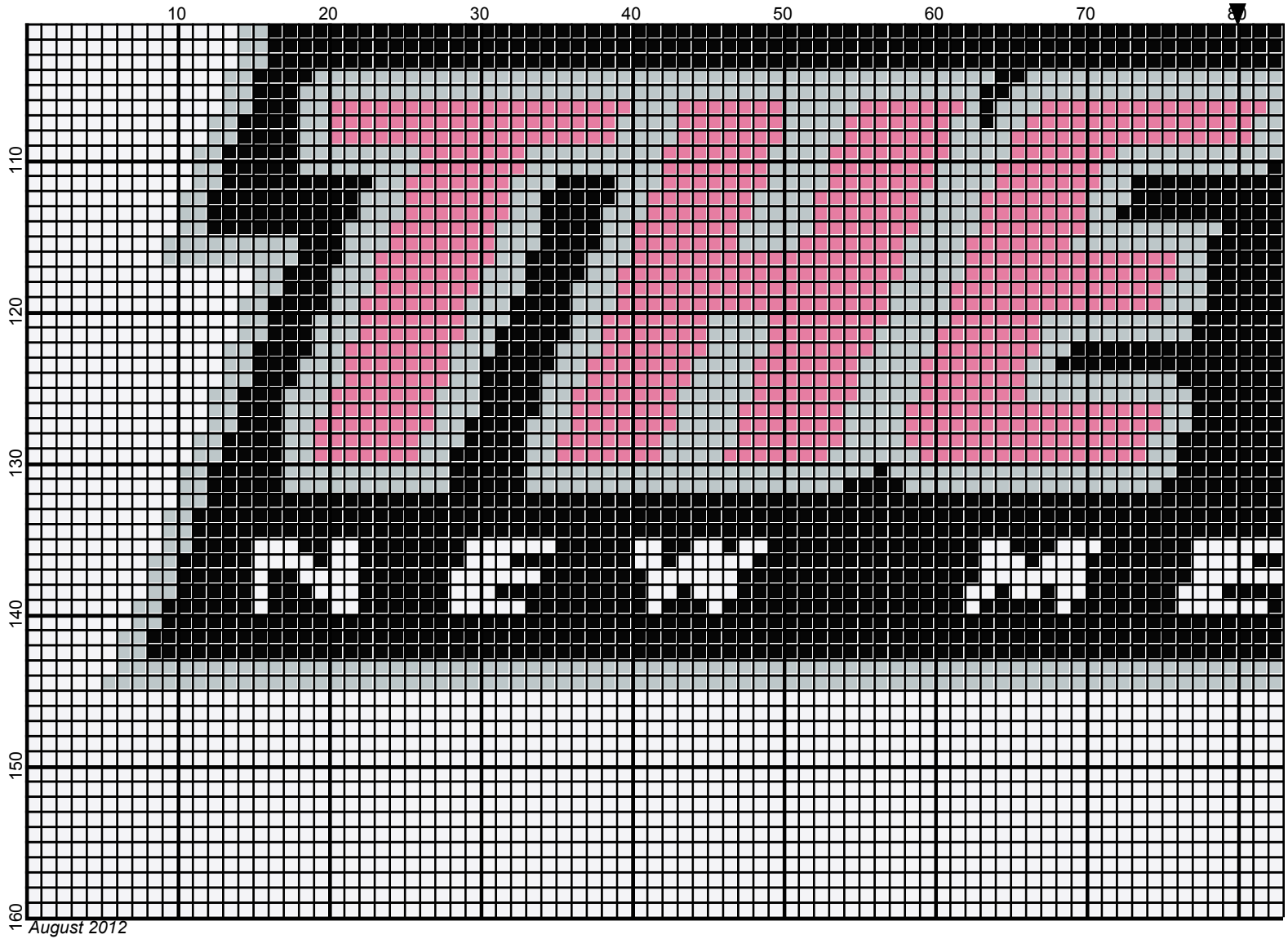
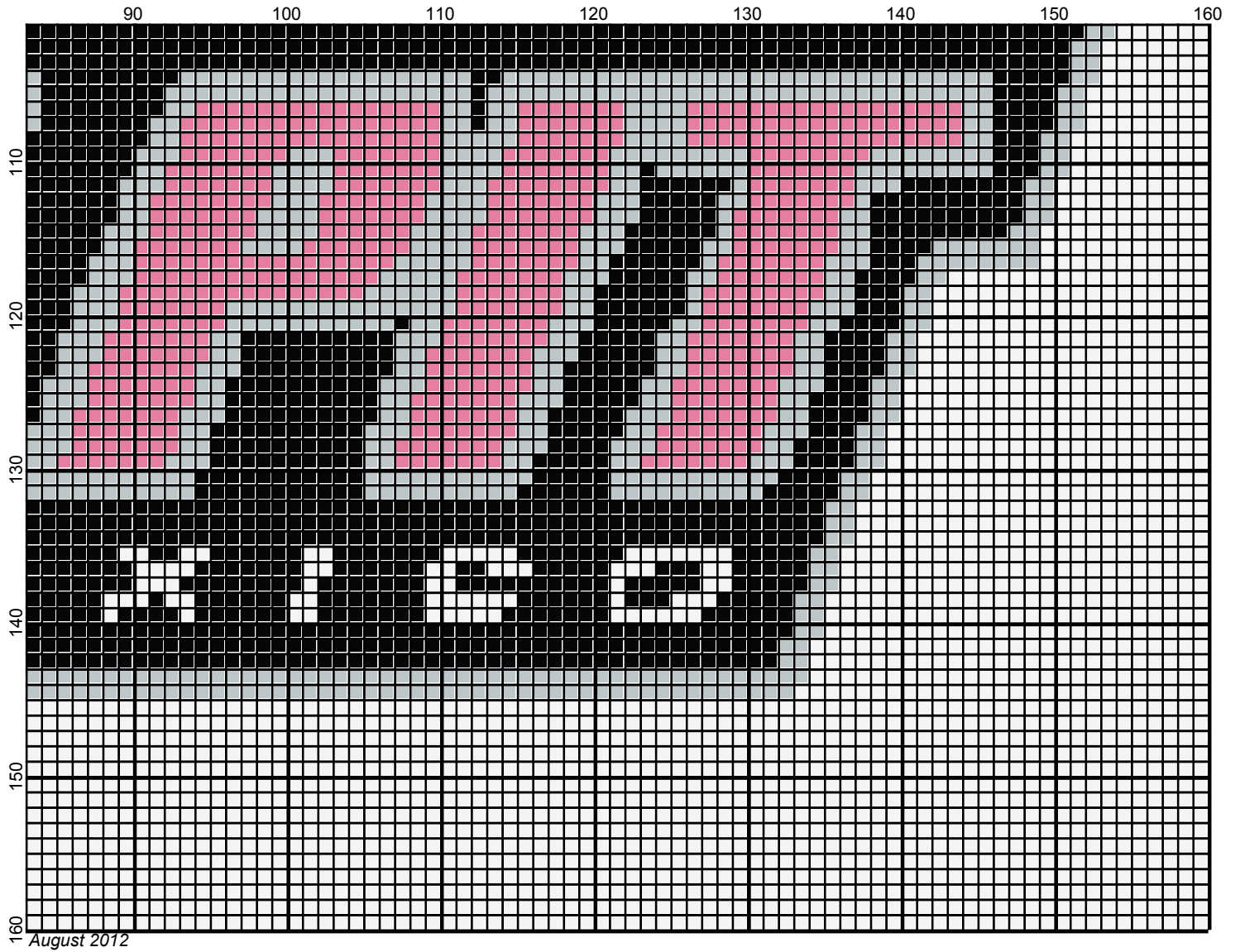


August 2012





August 2012

new_mexico_the_pit

Author: Donna Hammell
Copyright: August 2012
Website: www.donnascrochetshoppe.com
Grid Size: 160W x 160H
Design Area: 16.00" x 16.00" (160 x 160 stitches)

Legend:

■ [2] SSE SSE312 Black □ [2] SSE SSE316 Soft White ■ [2] SSE SSE706 Perfect Pink □ [2] SSE SSE341 Light Gray

Instructions for using the graph.

GAUGE= 4 STS = 1"
4 ROWS = 1"

I USED SIZE "H" AFGHAN HOOK,USE WHATEVER SIZE GIVES YOU THE CORRECT GAUGE. CAN BE DONE IN AFGHAN STITCH OR SINGLE CROCHET.

EACH SQUARE ON THE GRAPH REPRESENTS 1 STITCH. FOR SINGLE CROCHET READ THE CHART FROM RIGHT TO LEFT, AND THEN LEFT TO RIGHT. IF USING AFGHAN STITCH ALWAYS READ FROM THE RIGHT.

TO START: CHAIN ONE MORE STITCH THAN GRAPH.

IF YOU NEED TO MAKE THE PATTERN LARGER ADD STITCHES EVENLY TO BOTH SIDES OR ADD ROWS EVENLY ABOVE AND BELOW.

ESTIMATED YARN NEEDED:
PINK;2 OUNCES
LT GRAY: 5 OUNCES
SOFT WHITE: 14 OUNCES
BLACK: 7 OUNCES