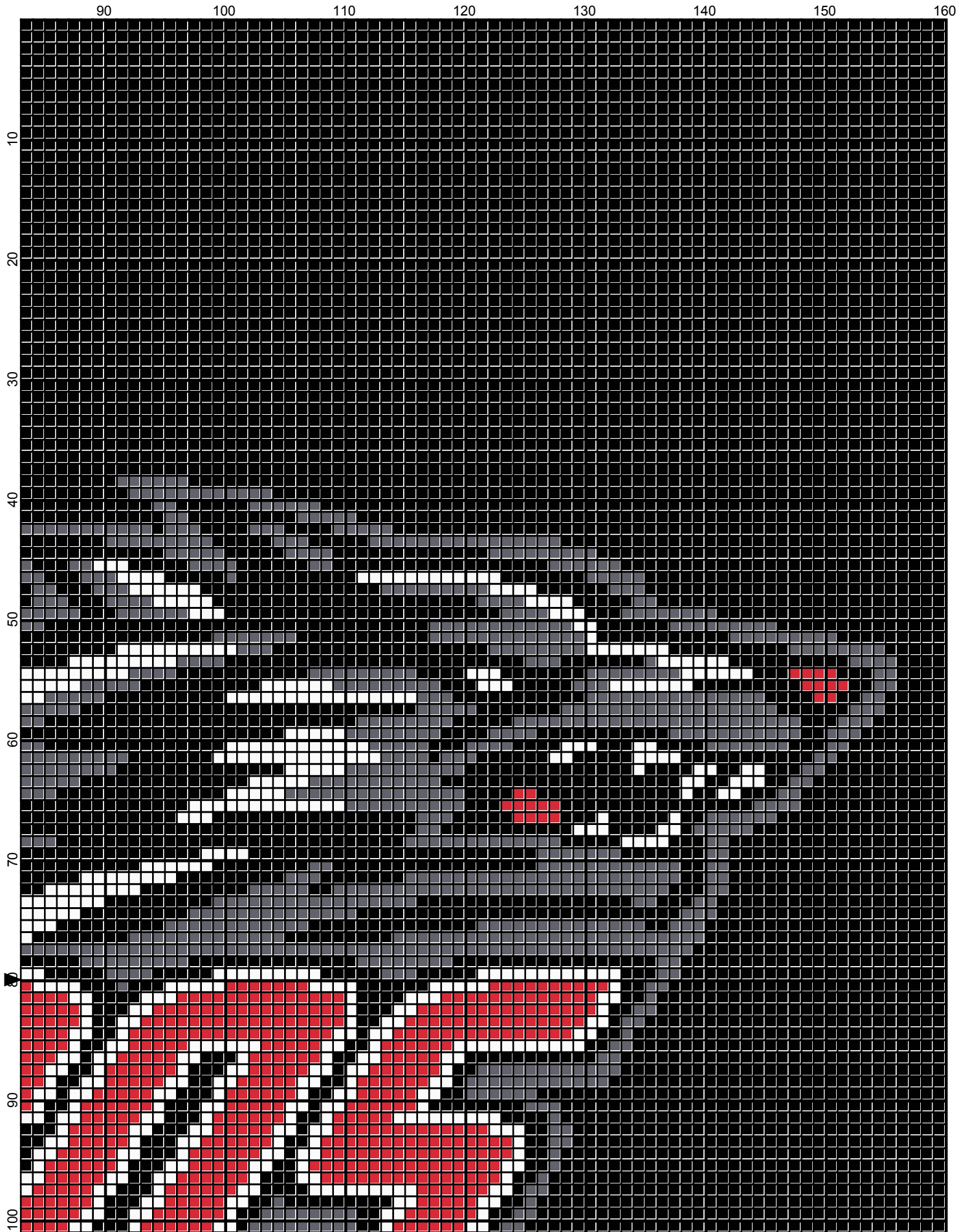


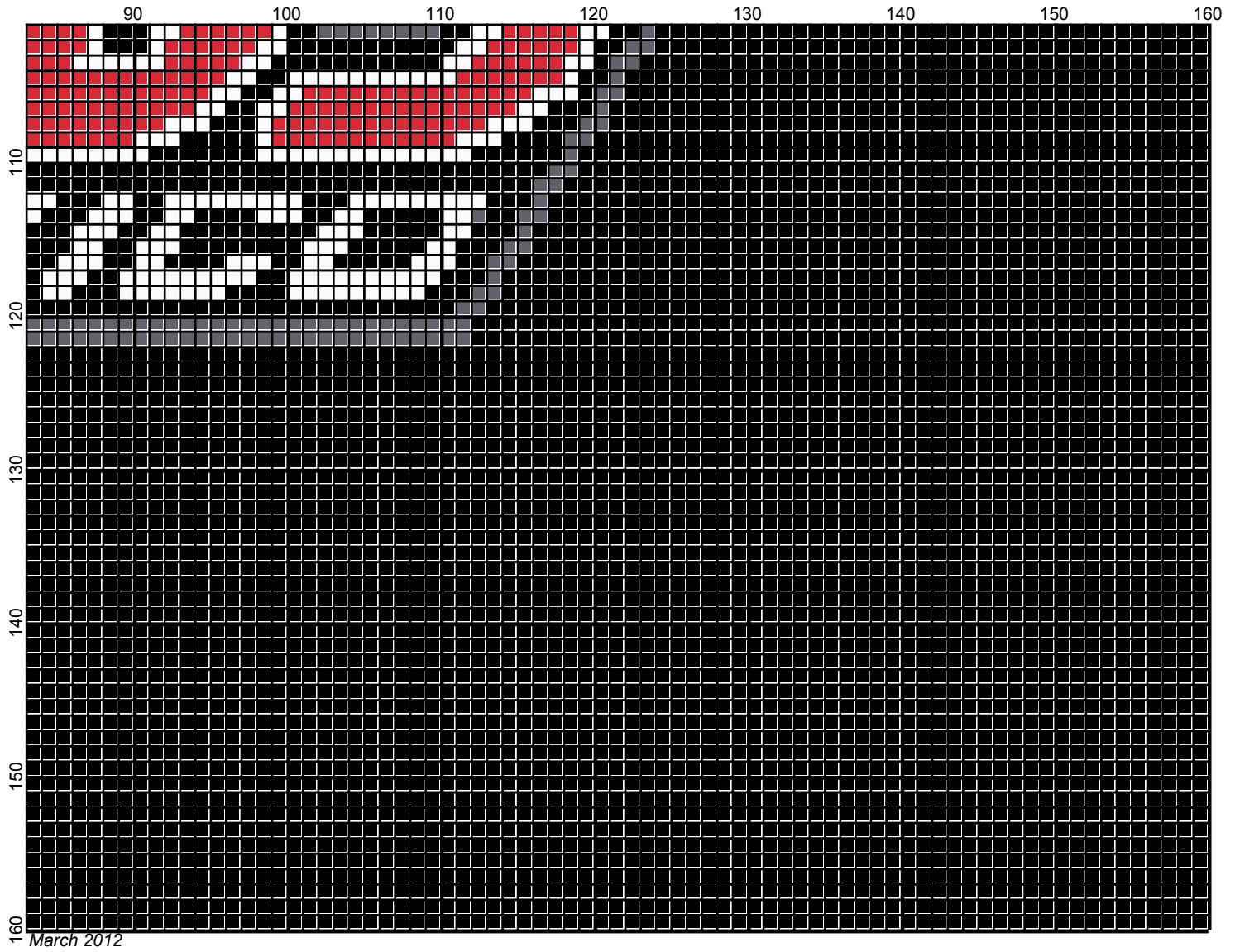
March 2012



March 2012



March 2012



# new\_mexico\_lobos

---

**Author:** Donna Hammell  
**Copyright:** March 2012  
**Website:** www.donnascrochetshoppe.com  
**Grid Size:** 160W x 160H  
**Design Area:** 16.00" x 16.00" (160 x 160 stitches)

## Legend:

■ [2] 001 RH012 Black      ■ [2] 001 RH912 Cherry Red      □ [2] 001 rh001 White      ■ [2] 001 RH401 Nickel

Instructions for using the graph.

GAUGE= 4 STS = 1"  
4 ROWS = 1"

EACH SQUARE ON THE GRAPH REPRESENTS 1 STITCH. FOR SINGLE CROCHET READ THE CHART FROM RIGHT TO LEFT, AND THEN LEFT TO RIGHT. IF USING AFGHAN STITCH ALWAYS READ FROM THE RIGHT.

TO START: CHAIN ONE MORE STITCH THAN GRAPH.

ESTIMATED RED HEART YARN NEEDED:

WHITE :2 OUNCES

BLACK: 21 OUNCES

RED: 2 OUNCE

NICKEL/GRAY: 2 OUNCES