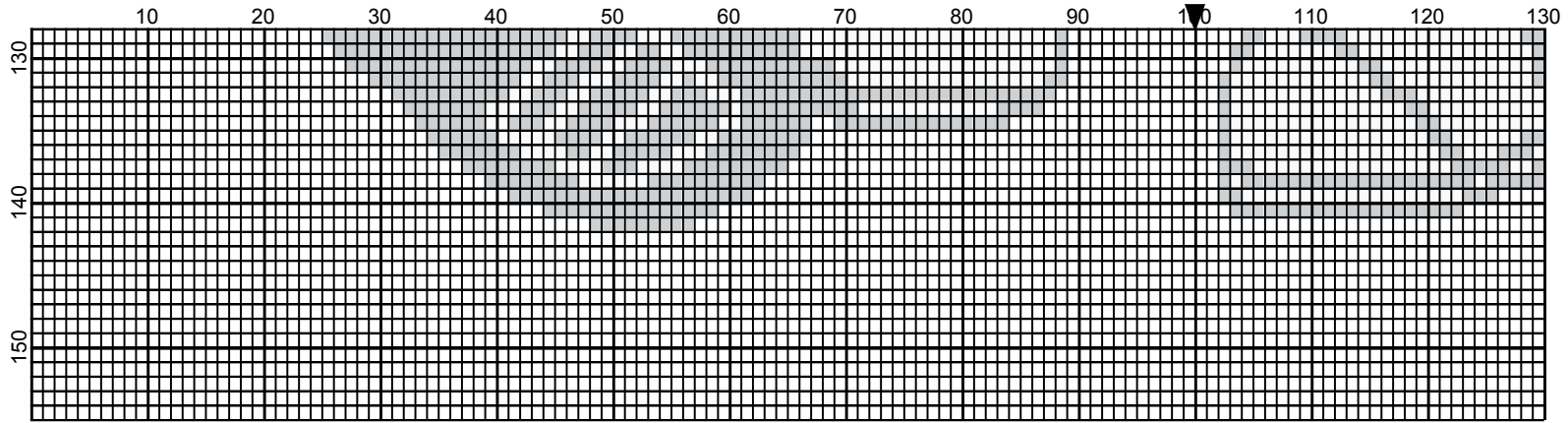
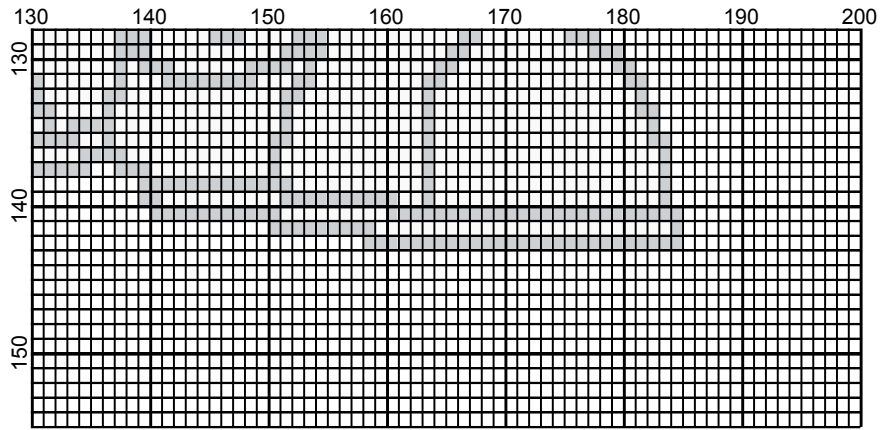




May 2009



M & M #5 by Donna Hammell



May 2009

M & M #5

Author: Donna Hammell
Company: The Crochet Shoppe
Copyright: May 2009
Website: www.geocities.com/crochetshoppe/patterns.html
Grid Size: 200W x 155H
Design Area: 17.00" x 16.38" (170 x 131 stitches)

Legend: (001)

 [2] RH230 Yellow  [2] RH412 Silver  [2] RH012 Black  [2] rh001 White
 [2] RH246 Sea Coral  [2] RH902 Jockey Red  [2] RH257 Light Peach

Instructions for using the graph.

GAUGE= 5 STS = 1"
4 ROWS = 1"

I USED SIZE "H" HOOK, USE WHATEVER SIZE GIVES YOU THE CORRECT GAUGE. CAN BE DONE IN AFGHAN STITCH OR SINGLE CROCHET.

EACH SQUARE ON THE GRAPH REPRESENTS 1 STITCH. FOR SINGLE CROCHET READ THE CHART FROM RIGHT TO LEFT, AND THEN LEFT TO RIGHT. IF USING AFGHAN STITCH ALWAYS READ FROM THE RIGHT.

TO START: CHAIN ONE MORE STITCH THAN GRAPH.

YOU WILL NEED TO ADD STITCHES TO MAKE THE PIECE WIDER, AND ADD ROWS TO MAKE IT LONGER. THE DESIGN IS CENTERED, SO ADD STITCHES EVENLY TO BOTH SIDES.

ESTIMATED RED HEART YARN NEEDED:

BLACK: 1 OUNCE
YELLOW: 4 OUNCES
LIGHT PEACH: 2 OUNCES
SEA CORAL: SMALL AMOUNT
SILVER 3: OUNCES
WHITE: 4 OUNCES
JOCKEY RED: 3 OUNCES
BACKGROUND: 18 OUNCES