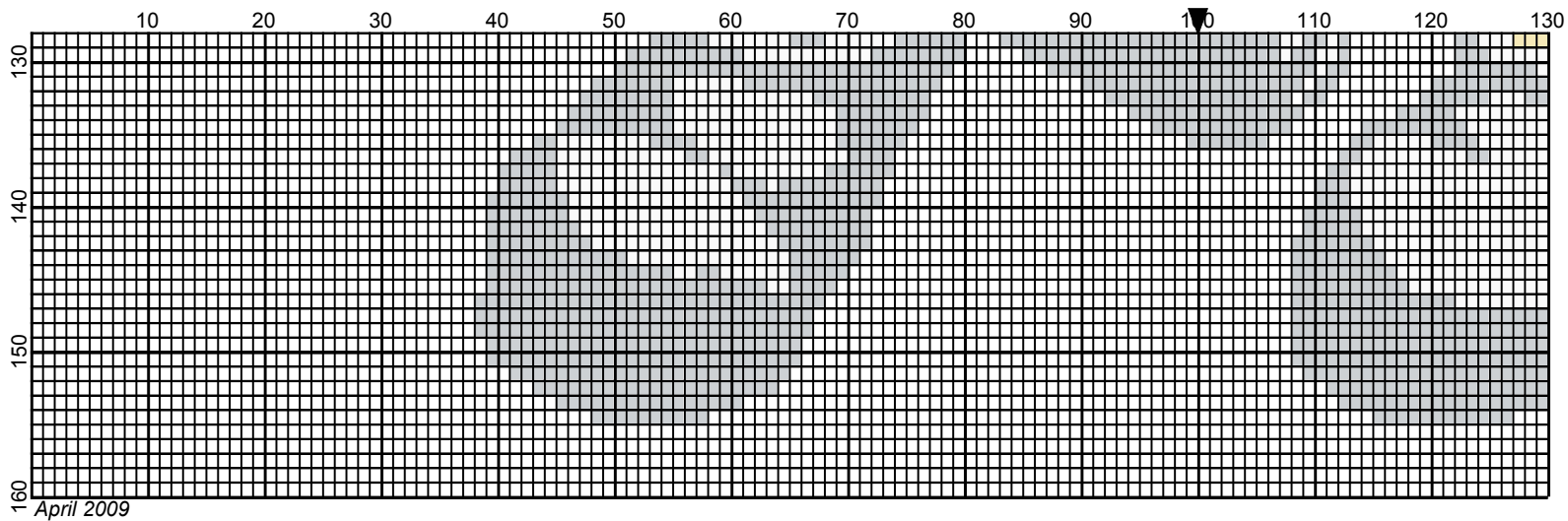
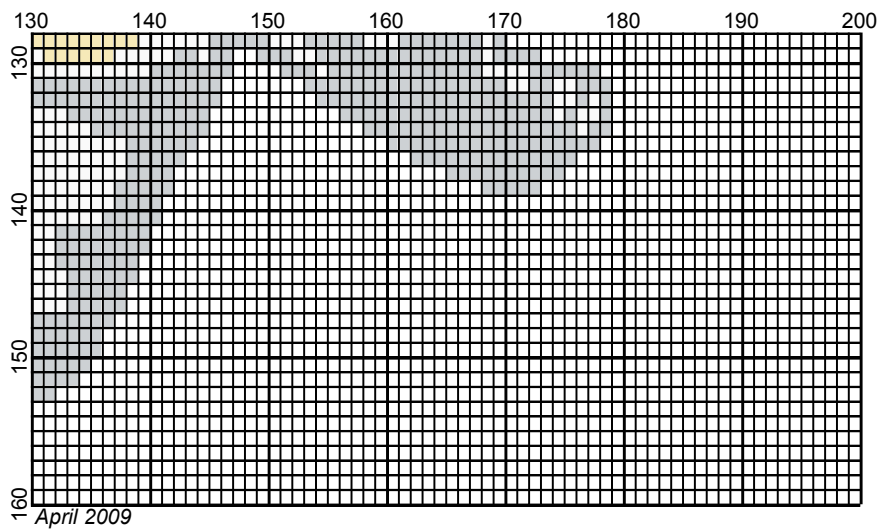


April 2009









M & M #1 by Donna Hammell



M & M #1

Author: Donna Hammell
Company: The Crochet Shoppe
Copyright: April 2009
Website: www.geocities.com/crochetshoppe/patterns.html
Grid Size: 200W x 160H
Design Area: 18.50" x 18.38" (185 x 147 stitches)

Legend: (001)

 [2] RH902 Jockey Red	 [2] RH230 Yellow	 [2] RH111 Eggshell
 [2] RH012 Black	 [2] RH412 Silver	 [2] rh001 White

Instructions for using the graph.

GAUGE= 5 STS = 1"
4 ROWS = 1"

I USED SIZE "H" AFGHAN HOOK, USE WHATEVER SIZE GIVES YOU THE CORRECT GAUGE. CAN BE DONE IN AFGHAN STITCH OR SINGLE CROCHET.

EACH SQUARE ON THE GRAPH REPRESENTS 1 STITCH. FOR SINGLE CROCHET READ THE CHART FROM RIGHT TO LEFT, AND THEN LEFT TO RIGHT. IF USING AFGHAN STITCH ALWAYS READ FROM THE RIGHT.

TO START: CHAIN ONE MORE STITCH THAN GRAPH

ESTIMATED RED HEART YARN

WHITE: 3 OUNCES

JOCKEY RED: 4 OUNCES

BACKGROUND: 16 OUNCES

BLACK: 2 OUNCES

YELLOW: 5 OUNCES

SILVER: 3 OUNCES

EGGSHELL: 2 OUNCES