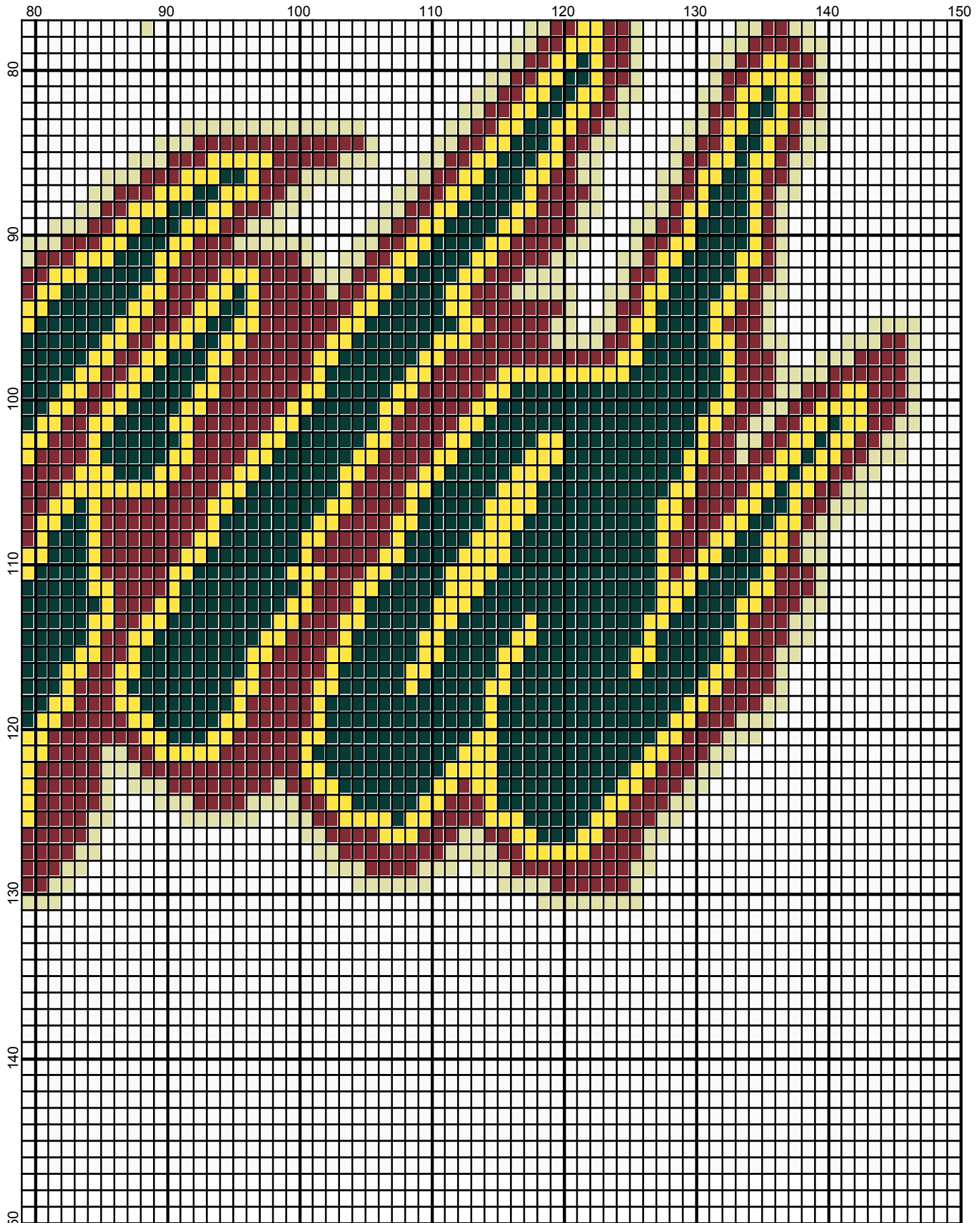


December 2010



December 2010








December 2010

# Minnesota Wild

---

**Author:** Donna Hammell  
**Copyright:** December 2010  
**Website:** www.donnascrochetshoppe.com  
**Grid Size:** 150W x 150H  
**Design Area:** 15.00" x 18.38" (150 x 147 stitches)

## Legend:

 [2] 001 RH917 Cardinal     [2] 001 RH261 Maize     [2] 001 RH230 Yellow  
 [2] 001 RH689 Forest Green     [2] 001 rh001 White

Instructions for using the graph.

GAUGE= 5 STS = 1"  
4 ROWS = 1"

I USED SIZE "H" AFGHAN HOOK, USE WHATEVER SIZE GIVES YOU THE CORRECT GAUGE. CAN BE DONE IN AFGHAN STITCH OR SINGLE CROCHET.

EACH SQUARE ON THE GRAPH REPRESENTS 1 STITCH. FOR SINGLE CROCHET READ THE CHART FROM RIGHT TO LEFT, AND THEN LEFT TO RIGHT. IF USING AFGHAN STITCH ALWAYS READ FROM THE RIGHT.

TO START: CHAIN ONE MORE STITCH THAN GRAPH.

IF YOU NEED TO MAKE THE PIECE WIDER ADD AN EVEN NUMBER OF STITCHES TO BOTH SIDES, AND ADD ROWS TO MAKE IT LONGER. THE DESIGN IS CENTERED, SO ADD STITCHES EVENLY TO BOTH SIDES.

ESTIMATED YARN NEEDED:  
FOREST GREEN: 6 OUNCES  
WHITE: 12 OUNCES  
CARDINAL: 3 OUNCES  
MAIZE: 2 OUNCES  
YELLOW: 2 OUNCES