

Legend:
■ RHS-312 ■ RHS-324 ■ RHS-376 □ RHS-316

miami_heat_85x90

Author: Donna Hammell
Copyright: August 2024
Website: www.donnascrochetshoppe.com
Grid Size: 85W x 90H
Design Area: 8.50" x 11.25" (85 x 90 stitches)

Legend:

■	[2]	RHS	312	Black	■	[2]	RHS	376	Burgundy
■	[2]	RHS	324	Bright Yellow	□	[2]	RHS	316	Soft White

Instructions for using the graph.

GAUGE= 5 STS = 1"
4 ROWS = 1"

I USED SIZE "H" AFGHAN HOOK,USE WHATEVER SIZE GIVES YOU THE CORRECT GAUGE. CAN BE DONE IN AFGHAN STITCH OR SINGLE CROCHET.

EACH SQUARE ON THE GRAPH REPRESENTS 1 STITCH. FOR SINGLE CROCHET READ THE CHART FROM RIGHT TO LEFT, AND THEN LEFT TO RIGHT. IF USING AFGHAN STITCH ALWAYS READ FROM THE RIGHT.

TO START: CHAIN ONE MORE STITCH THAN GRAPH.

YOU WILL NEED TO ADD STITCHES TO MAKE THE PIECE WIDER, AND ADD ROWS TO MAKE IT LONGER. THE DESIGN IS CENTERED, SO ADD STITCHES EVENLY TO BOTH SIDES.

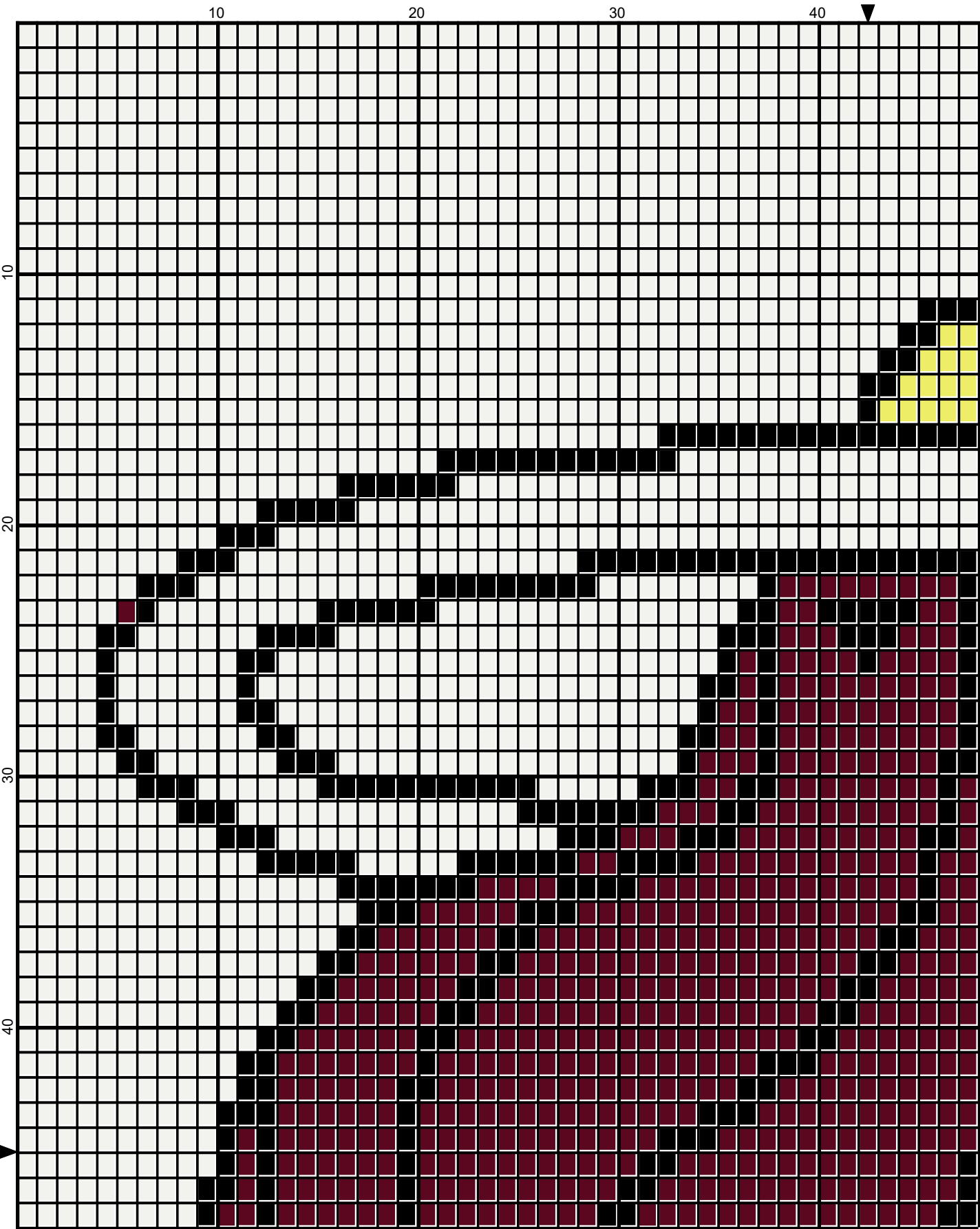
ESTIMATED RED HEART YARN NEEDED:

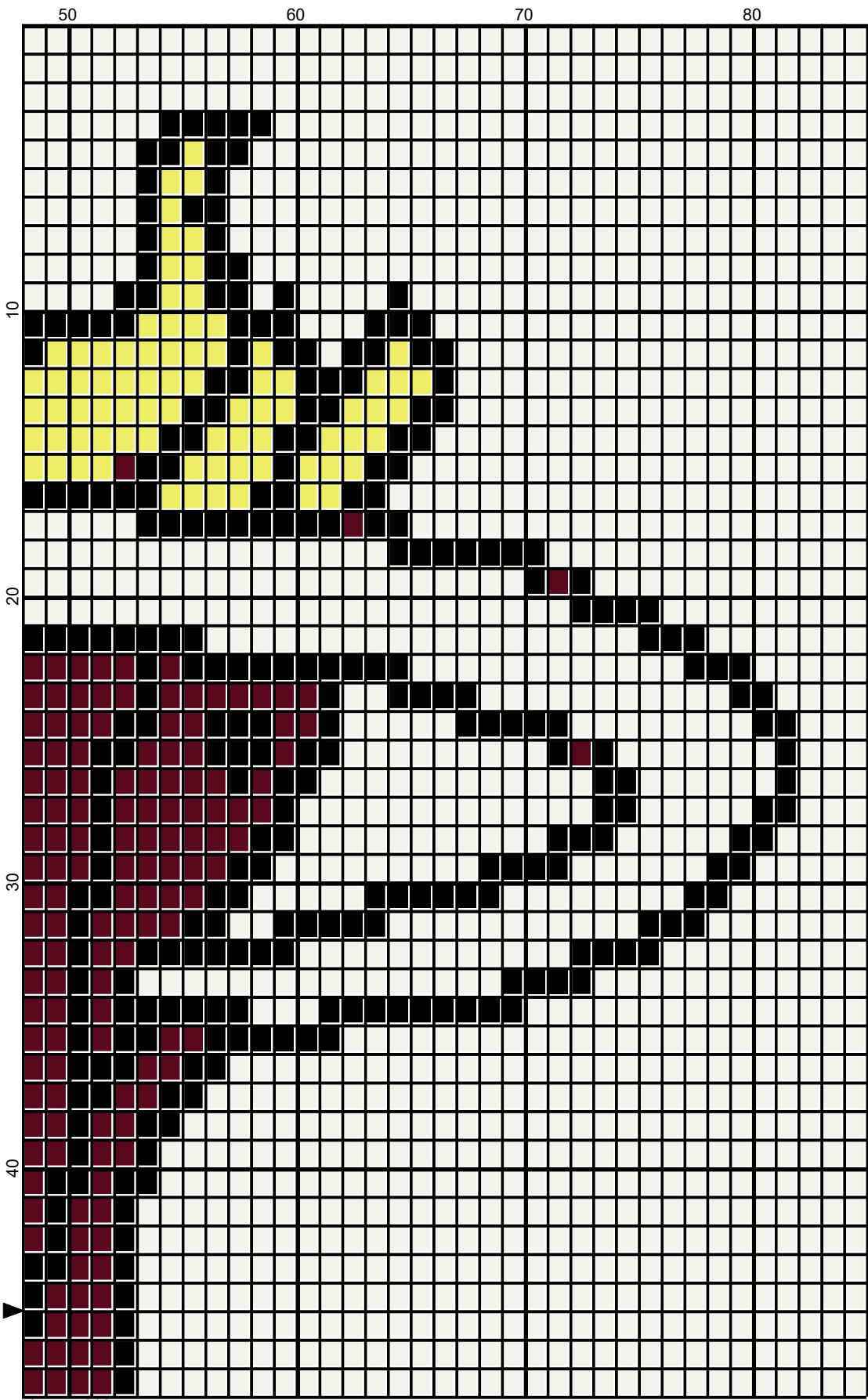
BLACK:2 OUNCES/92 YDS

WHITE:7 OUNCES/332 YDS

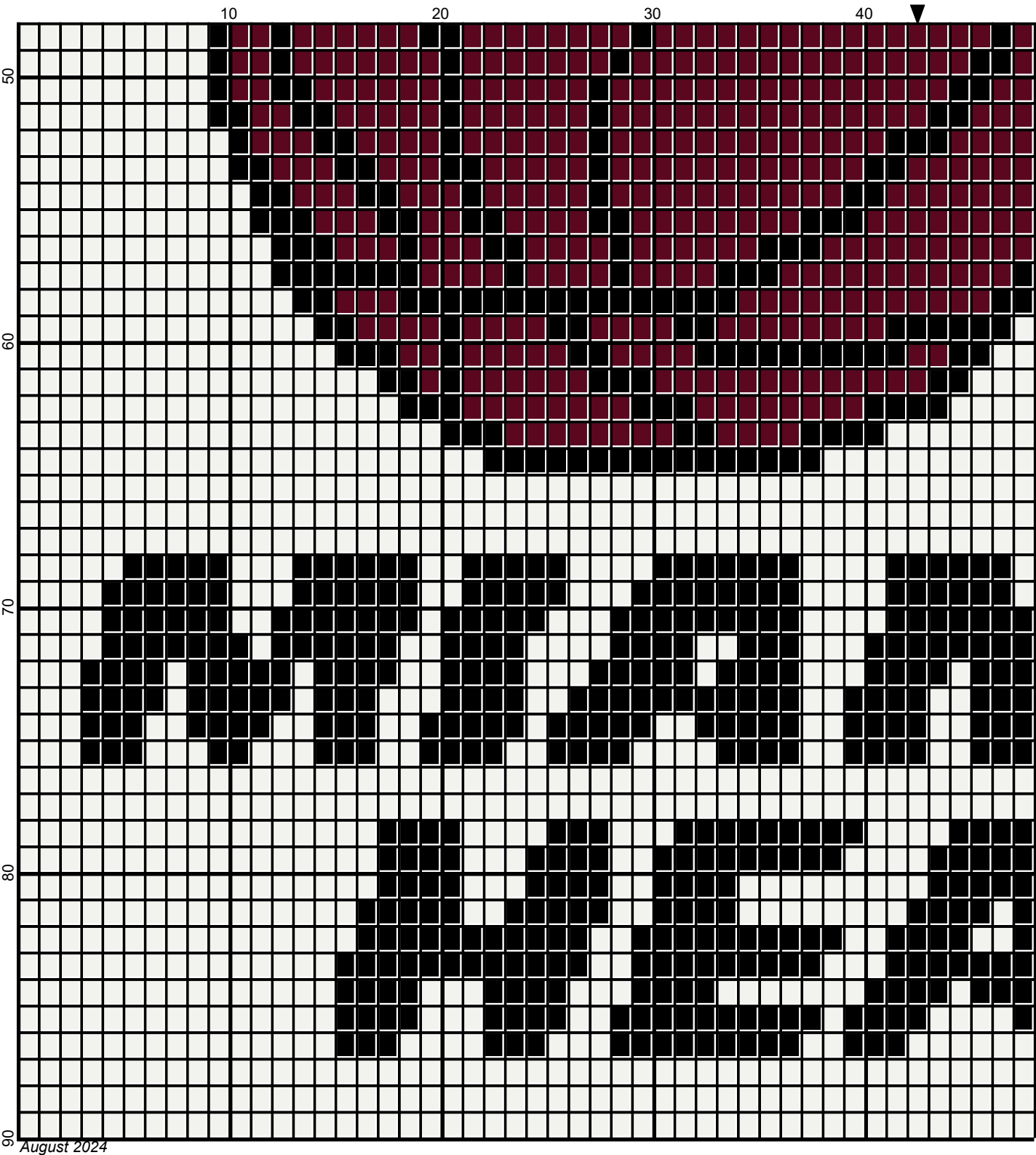
BRIGHT YELLOW:SMALL AMT/7 YDS

BURGUNDY: 2 OUNCES/71 YDS





August 2024



Legend:

