

10 20 30 40 50 60 70 80 90 100 110

10

20

30

40

50

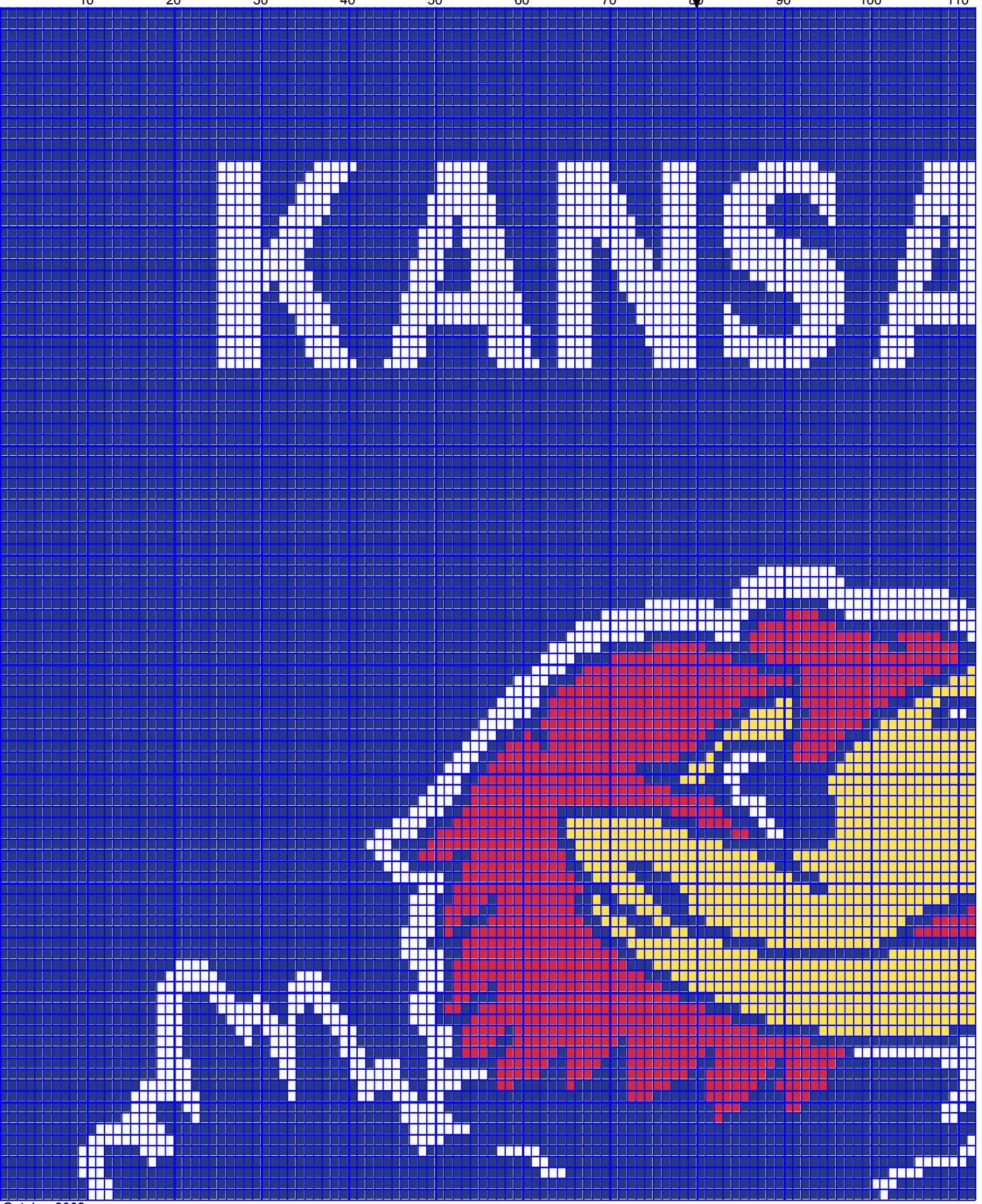
60

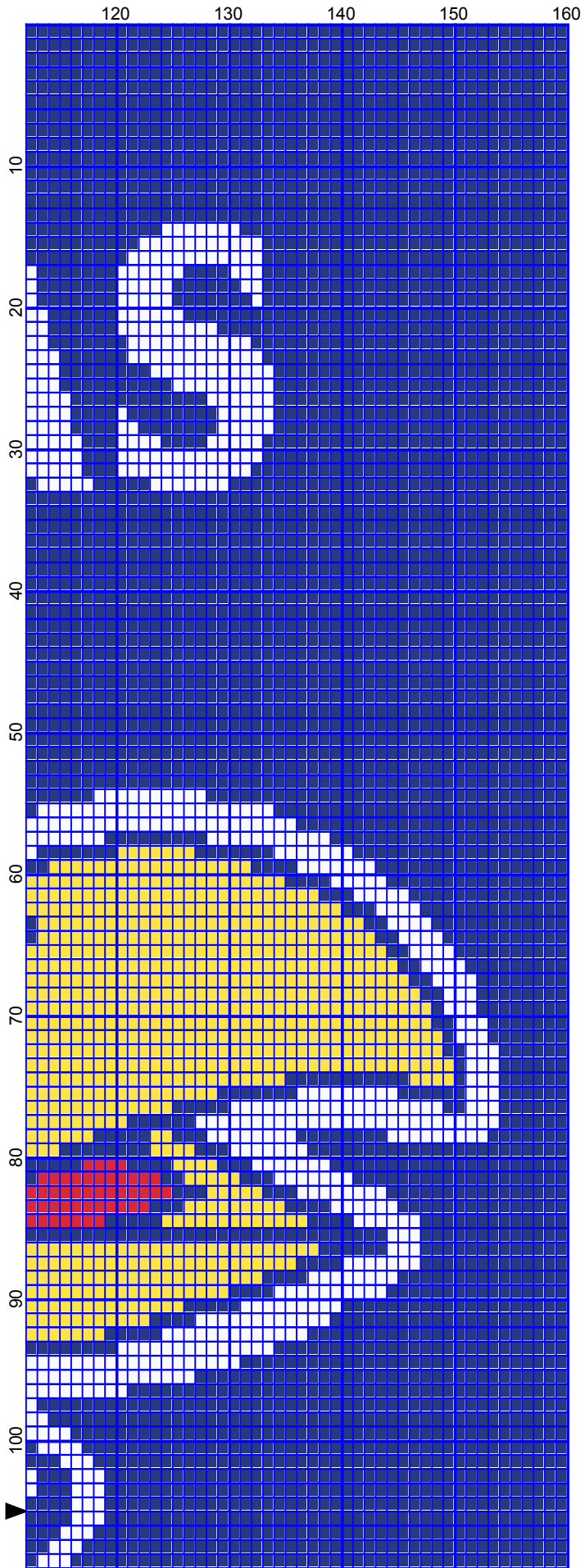
70

80

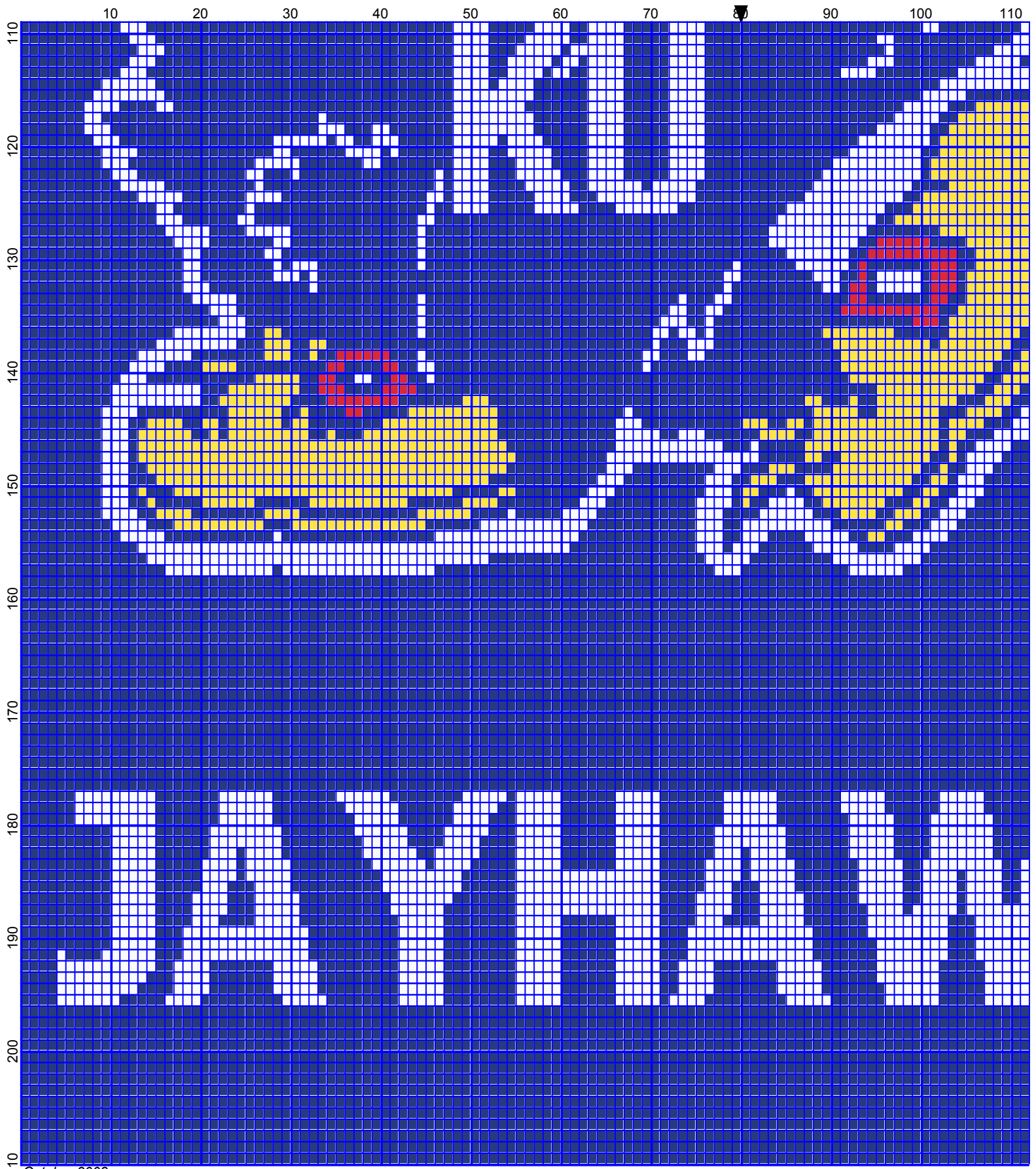
90

100

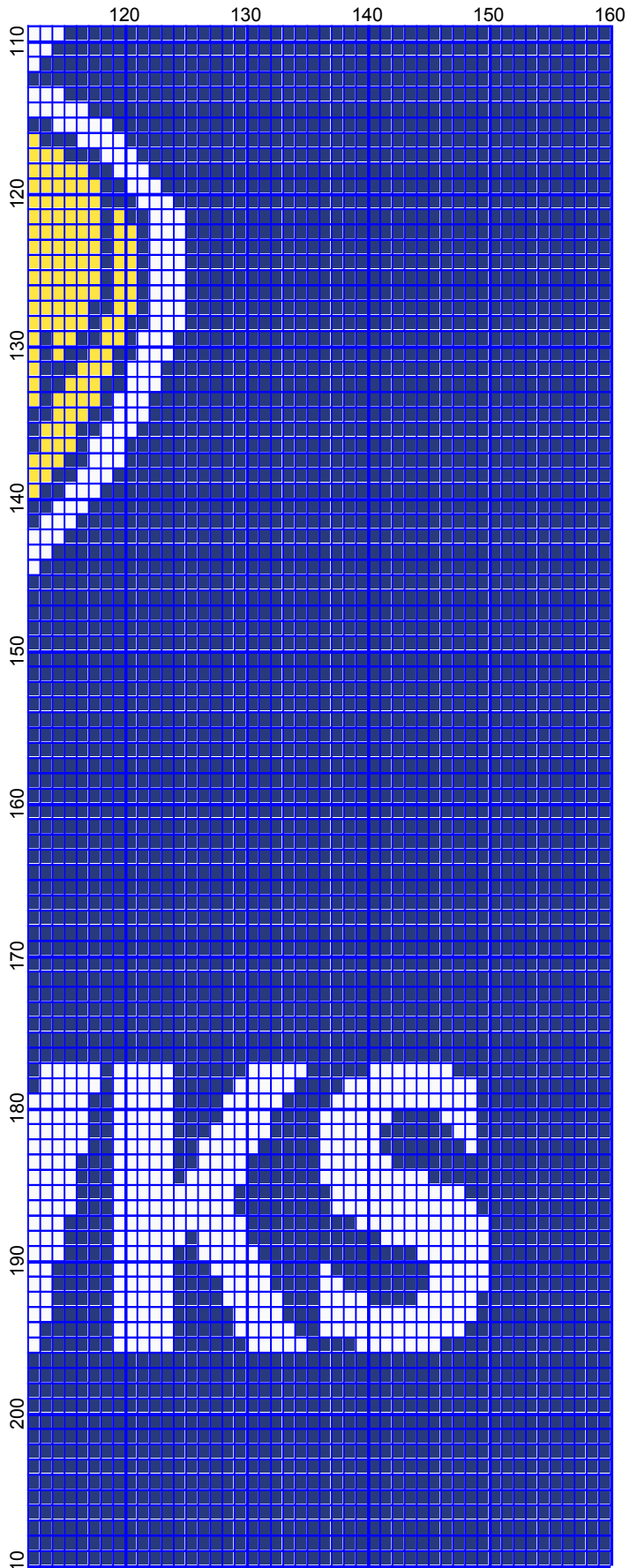




October 2008



October 2008




2 | October 2008

# University of Kansas Jayhawks

---

**Author:** Donna Hammell  
**Copyright:** October 2008  
**Website:** [www.geocities.com/crochetshoppe/patterns.html](http://www.geocities.com/crochetshoppe/patterns.html)  
**Grid Size:** 160W x 210H  
**Design Area:** 16.00" x 26.25" (160 x 210 stitches)

## Legend:

 [2] 001 rh001 White       [2] 001 RH230 Yellow       [2] 001 RH912 Cherry Red       [2] 001 RH849 Olympic Blue

Instructions for using the graph.

GAUGE= 4 STS = 1"  
4 ROWS = 1"

USE WHICHEVER HOOK GIVES YOU THE CORRECT GAUGE. I RECOMMEND A "G" OR AN "H". CAN BE DONE IN AFGHAN STITCH OR SINGLE CROCHET.

EACH SQUARE ON THE GRAPH REPRESENTS 1 STITCH. FOR SINGLE CROCHET READ THE CHART FROM RIGHT TO LEFT, AND THEN LEFT TO RIGHT. IF USING AFGHAN STITCH ALWAYS READ FROM THE RIGHT.

TO START: CHAIN ONE MORE STITCH THAN GRAPH.

YOU WILL NEED TO ADD STITCHES TO MAKE THE PIECE WIDER, AND ADD ROWS TO MAKE IT LONGER. THE DESIGN IS CENTERED, SO ADD STITCHES EVENLY TO BOTH SIDES.

ESTIMATED RED HEART YARN NEEDED:

OLYMPIC BLUE: 26 OUNCES

YELLOW: 3 OUNCES

WHITE: 5 OUNCES

CHERRY RED: 2 OUNCES