



Legend:  
■ RHS-312 ■ RHS-321 ■ RHS-390 □ RHS-316

# kansas\_city\_chiefs\_logo\_200x200

---

**Author:** Donna Hammell  
**Copyright:** zoctober 2025  
**Website:** [www.donnascrochetshoppe.com](http://www.donnascrochetshoppe.com)  
**Grid Size:** 200W x 200H  
**Design Area:** 20.00" x 25.00" (200 x 200 stitches)

## Legend:

■ [2] RHS 312 Black      ■ [2] RHS 321 Gold      ■ [2] RHS 390 Hot Red      □ [2] RHS 316 Soft White

Instructions for using the graph.

GAUGE= 5 STS = 1"  
4 ROWS = 1"

I USED SIZE "H" AFGHAN HOOK,USE WHATEVER SIZE GIVES YOU THE CORRECT GAUGE. CAN BE DONE IN AFGHAN STITCH OR SINGLE CROCHET.

EACH SQUARE ON THE GRAPH REPRESENTS 1 STITCH. FOR SINGLE CROCHET READ THE CHART FROM RIGHT TO LEFT, AND THEN LEFT TO RIGHT. IF USING AFGHAN STITCH ALWAYS READ FROM THE RIGHT.

TO START: CHAIN ONE MORE STITCH THAN GRAPH.

IF YOU NEED TO MAKE THE PIECE WIDER ADD AN EVEN NUMBER OF STITCHES TO BOTH SIDES, AND ADD ROWS TO MAKE IT LONGER. THE DESIGN IS CENTERED, SO ADD STITCHES EVENLY TO BOTH SIDES.

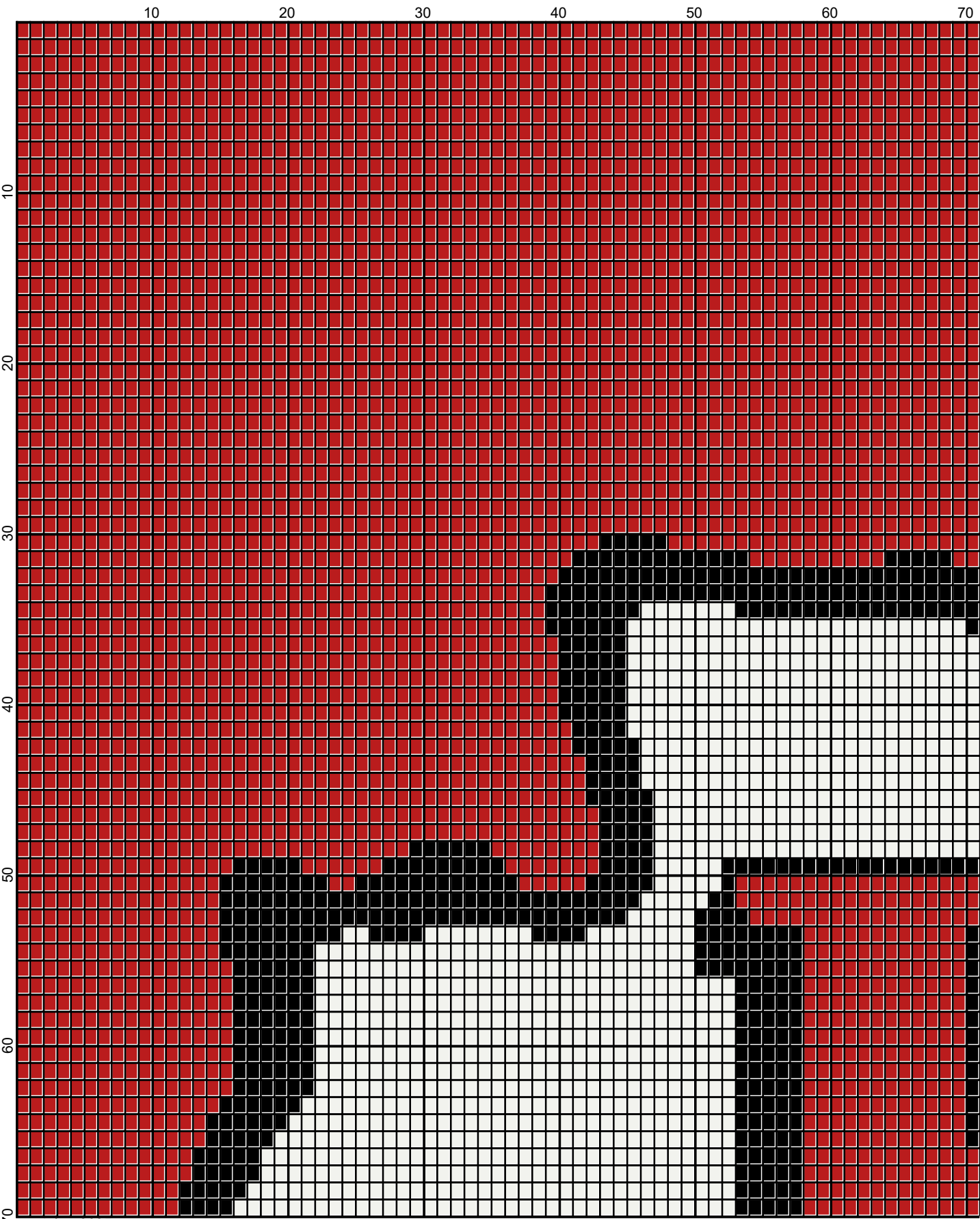
## ESTIMATED YARN NEEDED:

BLACK:4 OUNCES/ 192 YDS

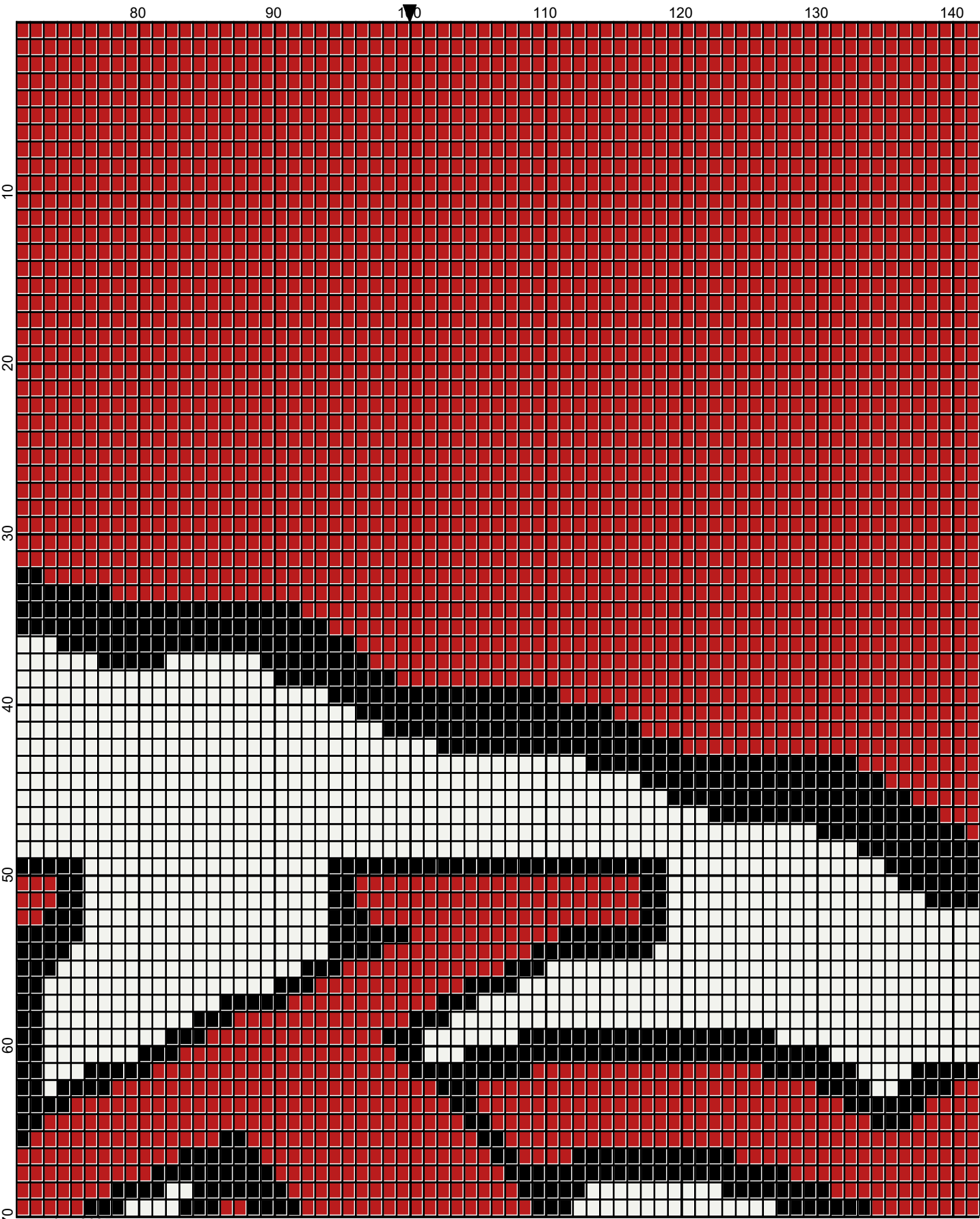
GOLD:4 OUNCES/167 YDS

RED: 38 OUNCES/1885 YDS

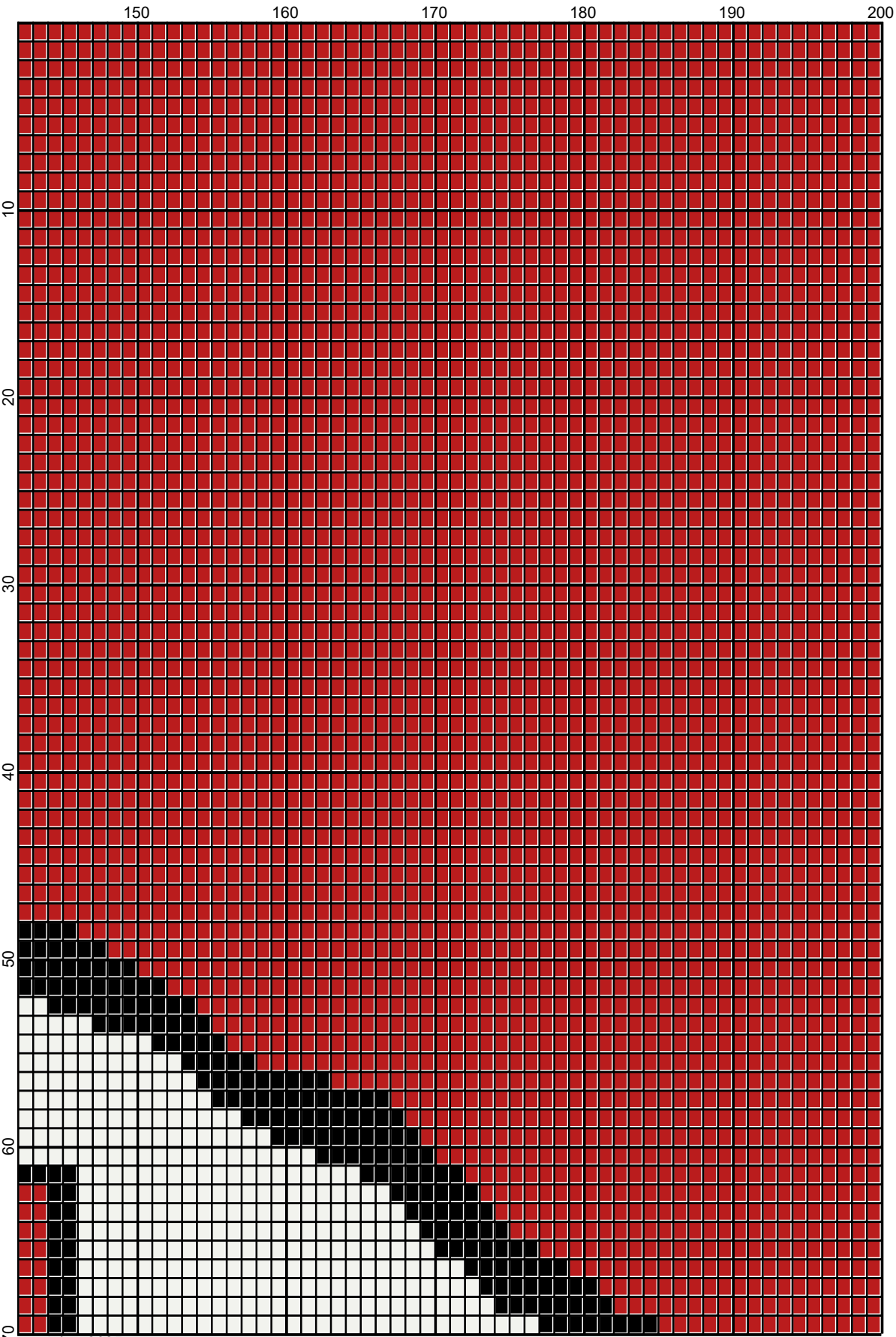
WHITE: 8 OUNCES/377 YDS



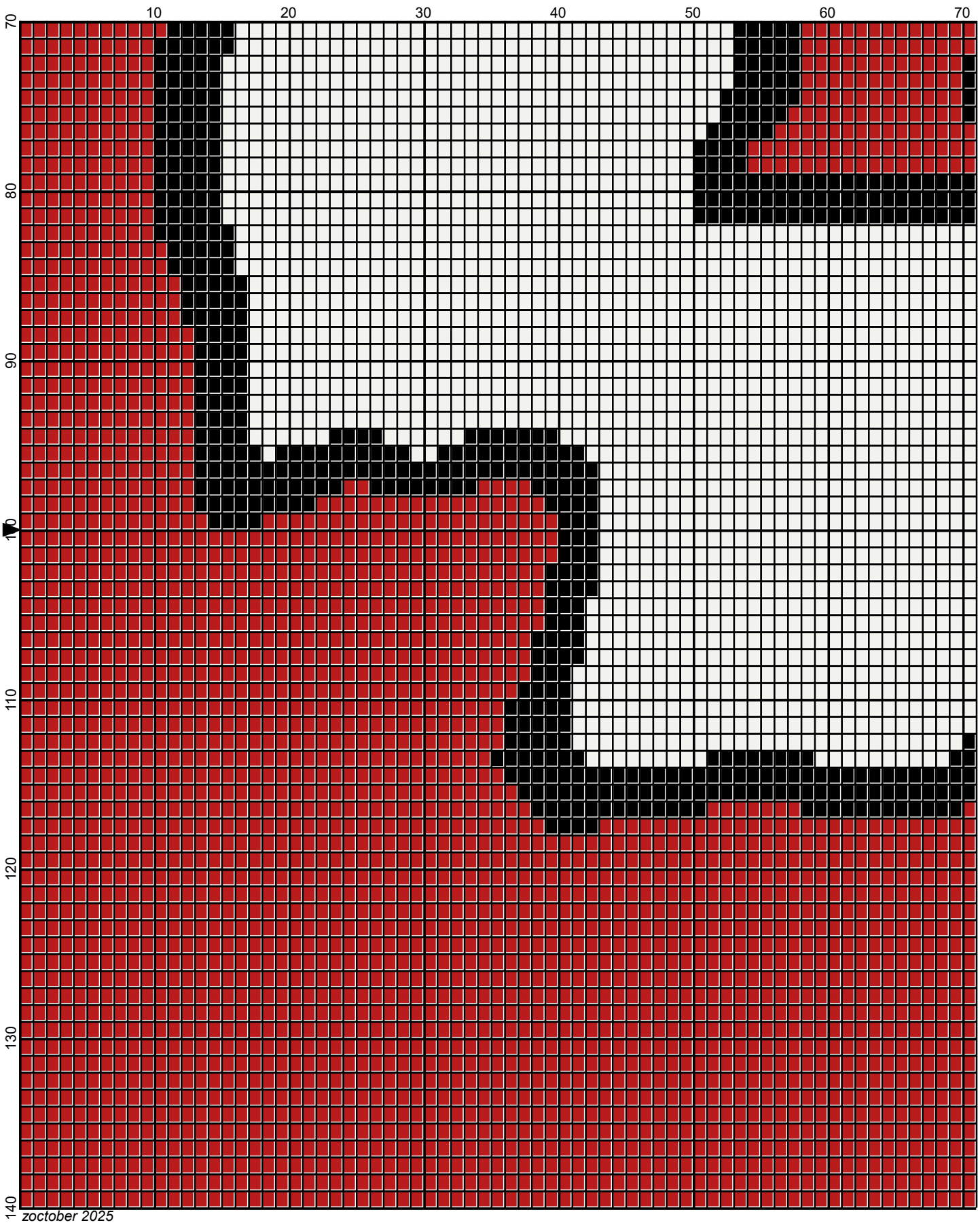
zooctober 2025



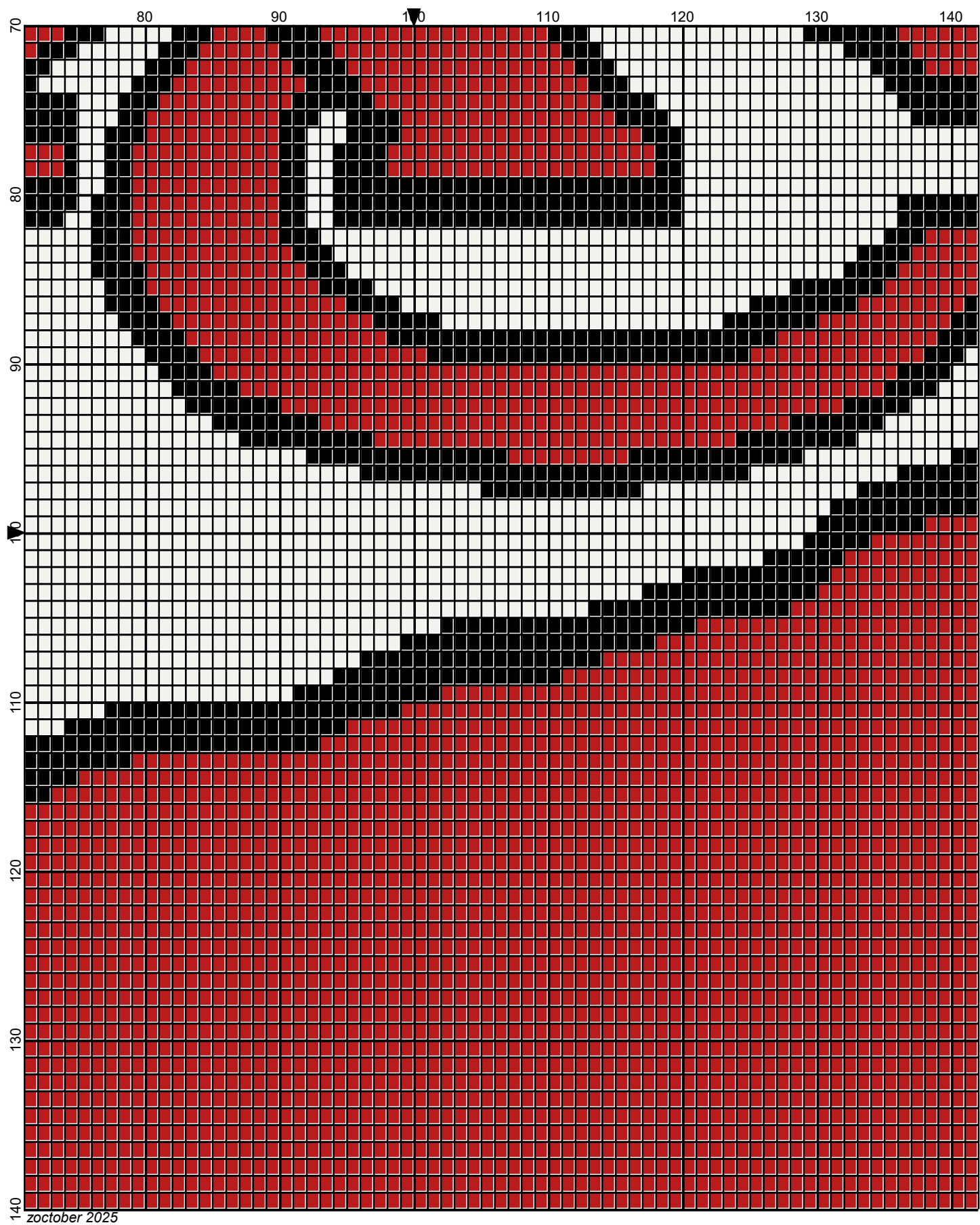
zooctober 2025



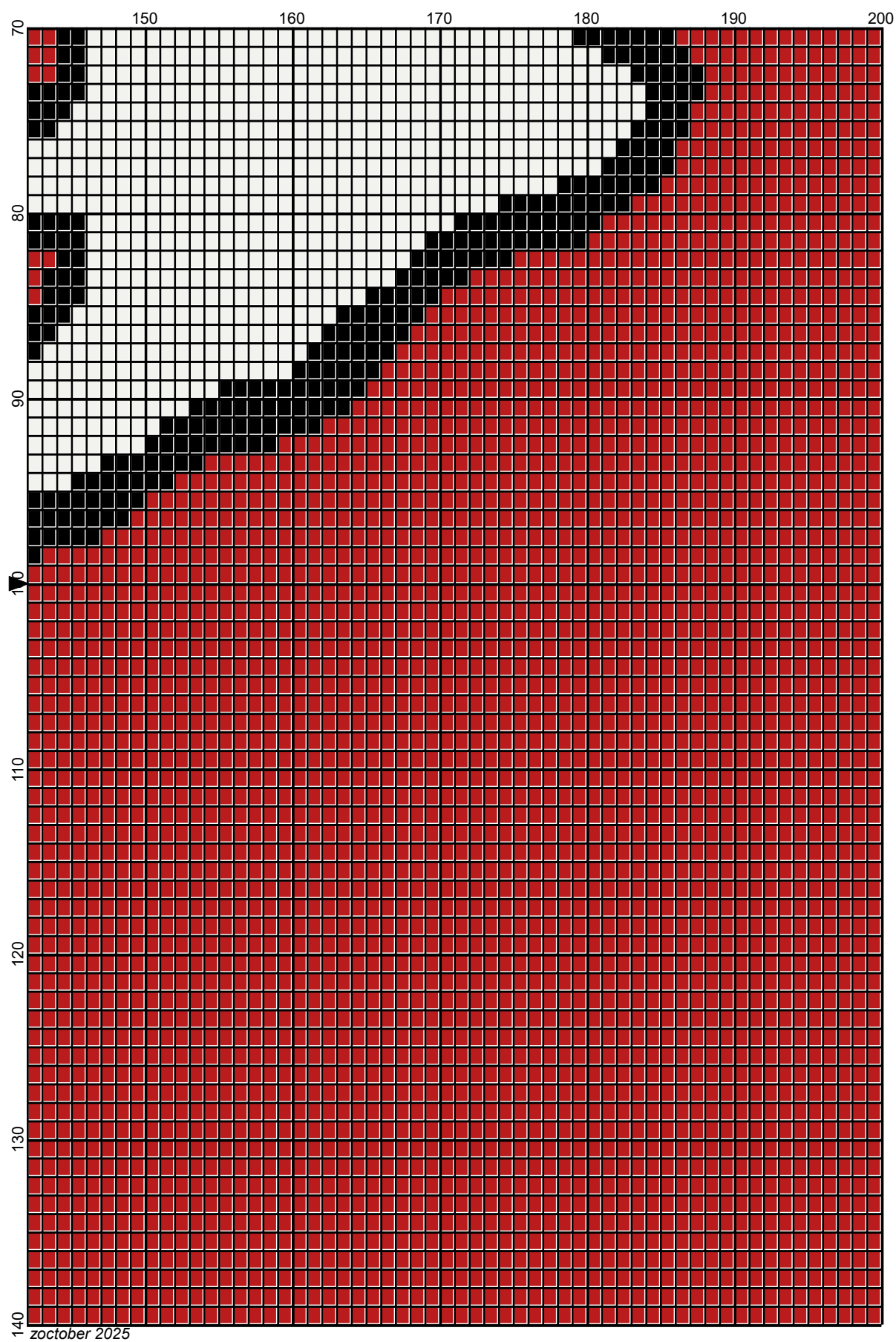
zoctober 2025



zoctober 2025

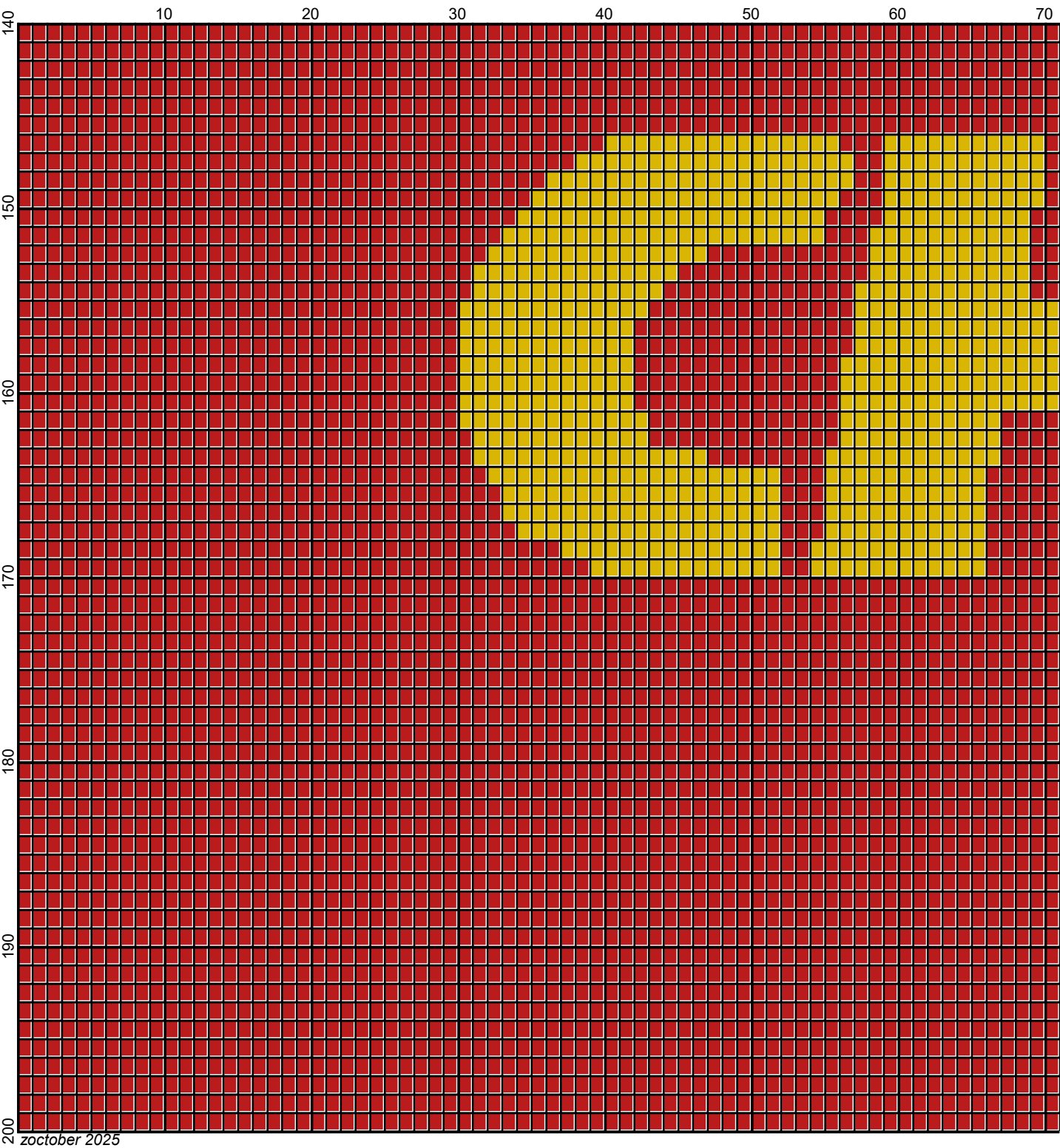


zooctober 2025

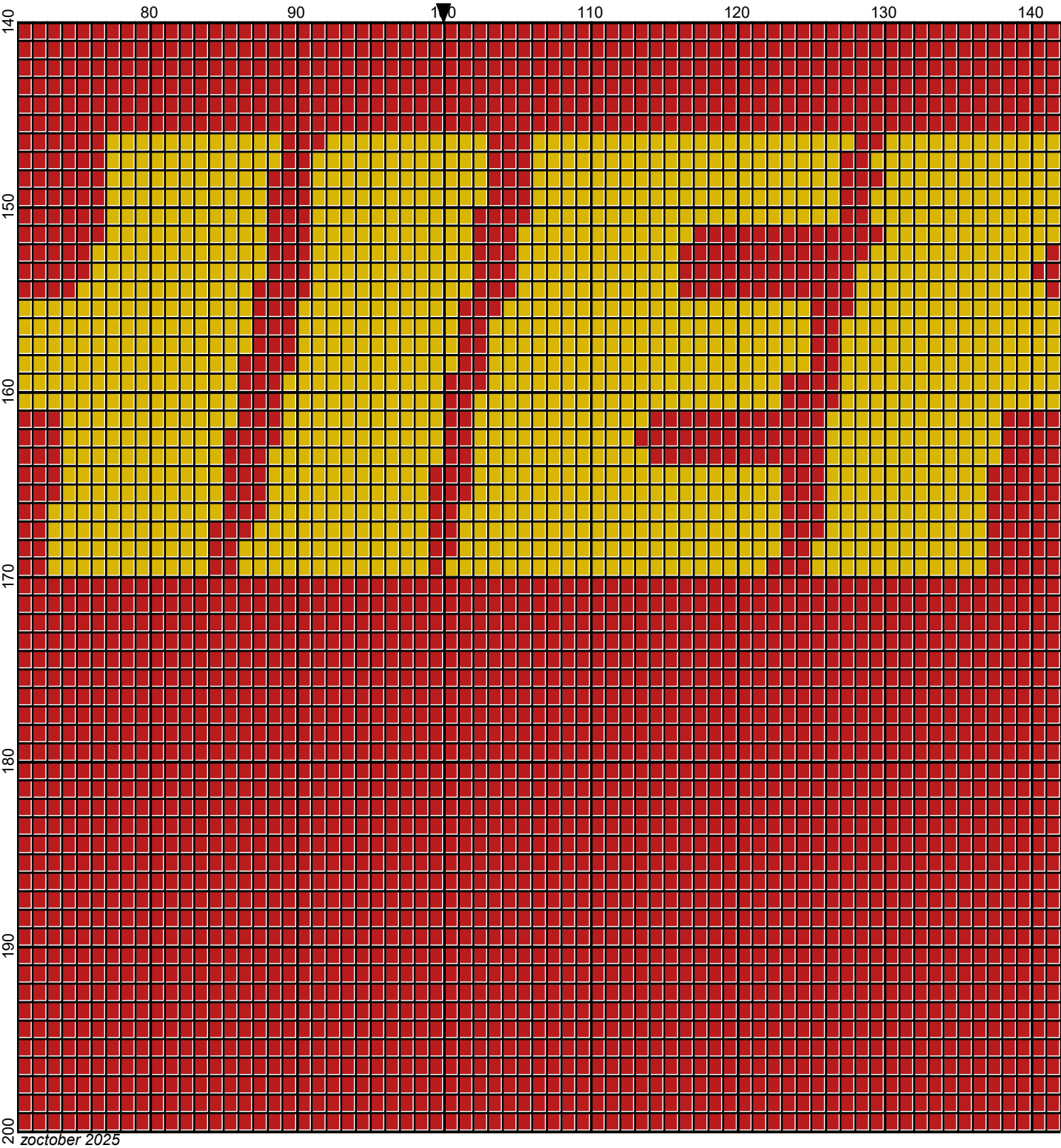


zoctober 2025

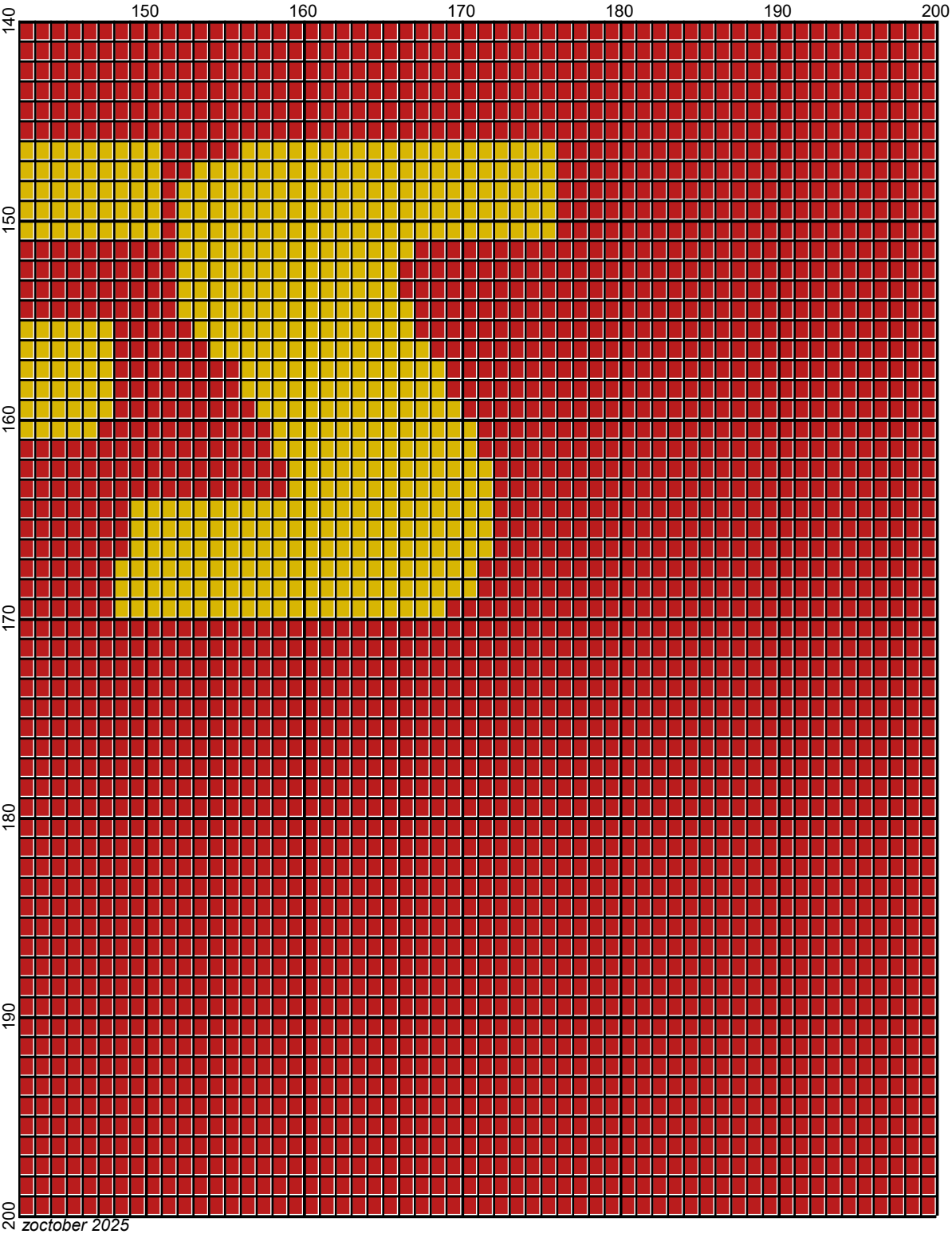




Legend:



■ RHS-312 ■ RHS-321 ■ RHS-390 □ RHS-316



zoctober 2025