








Legend:

■ RHS-3945 ■ RHS-312 ■ RHS-324 ■ RHS-381 ■ RHS-316

jimmie_johnson_150x150

Author: Donna Hammell
Copyright: February 2024
Website: www.donnascrochetshoppe.com
Grid Size: 150W x 150H
Design Area: 15.00" x 18.75" (150 x 150 stitches)

Legend:

 [2] RHS 3945 BLUE SUEDE	 [2] RHS 324 Bright Yellow	 [2] RHS 316 Soft White
 [2] RHS 312 Black	 [2] RHS 381 Light Blue	

Instructions for using the graph.

GAUGE= 5 STS = 1"
4 ROWS = 1"

I USED SIZE "H" AFGHAN HOOK,USE WHATEVER SIZE GIVES YOU THE CORRECT GAUGE. CAN BE DONE IN AFGHAN STITCH OR SINGLE CROCHET.

EACH SQUARE ON THE GRAPH REPRESENTS 1 STITCH. FOR SINGLE CROCHET READ THE CHART FROM RIGHT TO LEFT, AND THEN LEFT TO RIGHT. IF USING AFGHAN STITCH ALWAYS READ FROM THE RIGHT.

TO START: CHAIN ONE MORE STITCH THAN GRAPH.

YOU WILL NEED TO ADD STITCHES TO MAKE THE PIECE WIDER, AND ADD ROWS TO MAKE IT LONGER. THE DESIGN IS CENTERED, SO ADD STITCHES EVENLY TO BOTH SIDES.

ESTIMATED RED HEART YARN NEEDED:

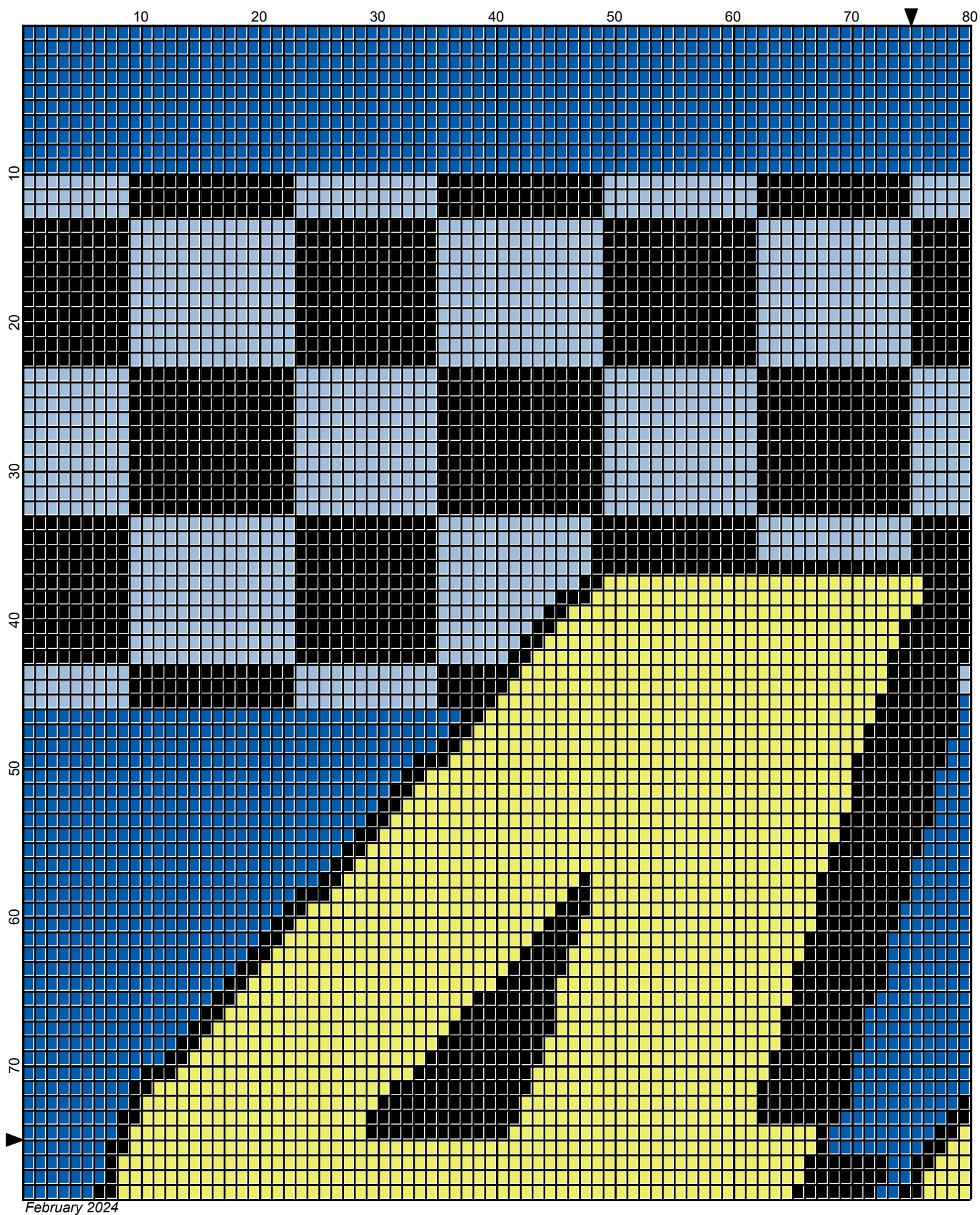
WHITE:1 OUNCE/33S

BLACK : 6 OUNCES/289 YDS

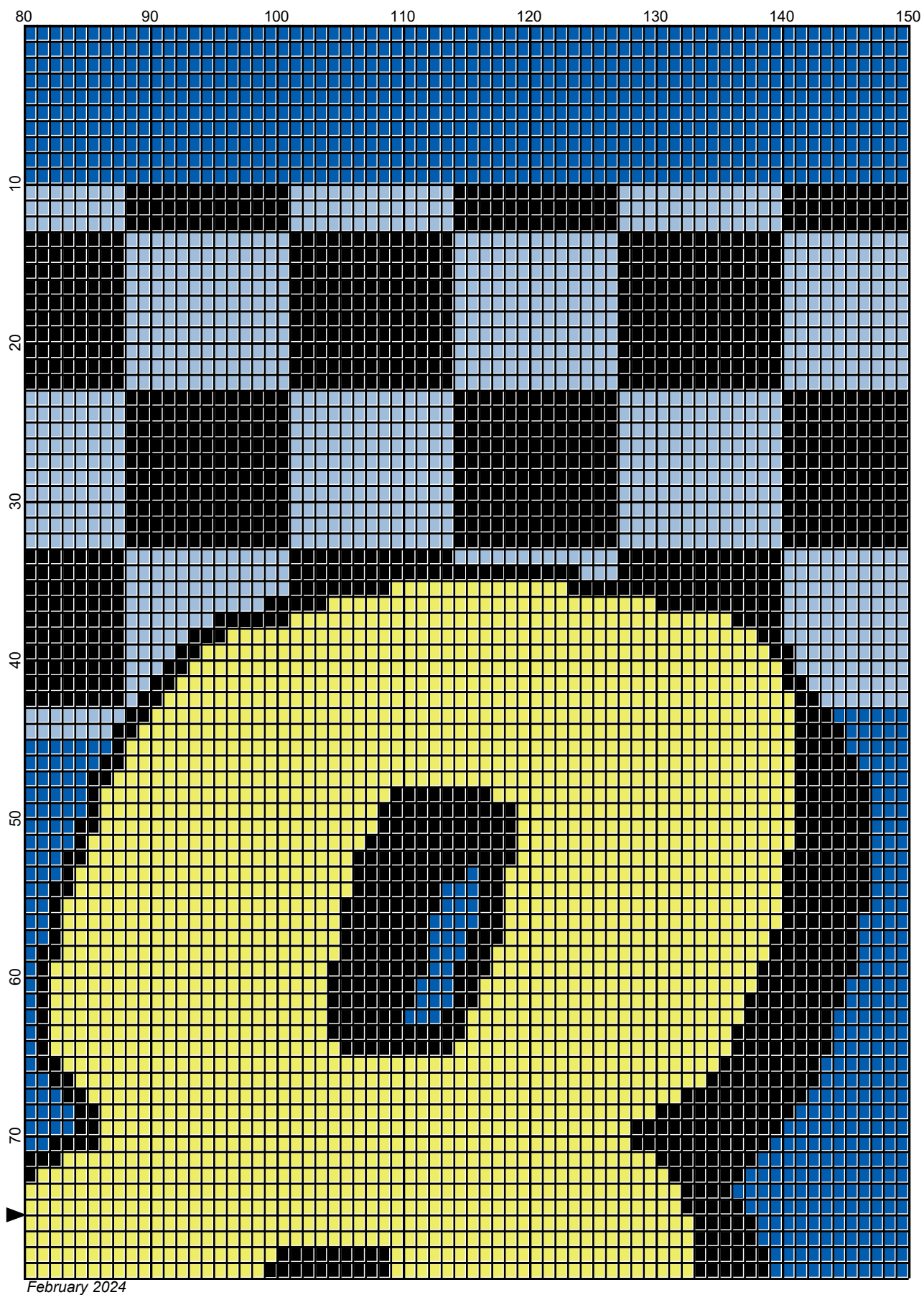
LT BLUE: 7OUNCES/331 YDS

BLUE SUEDE: 10 OUNCES/421 YDS

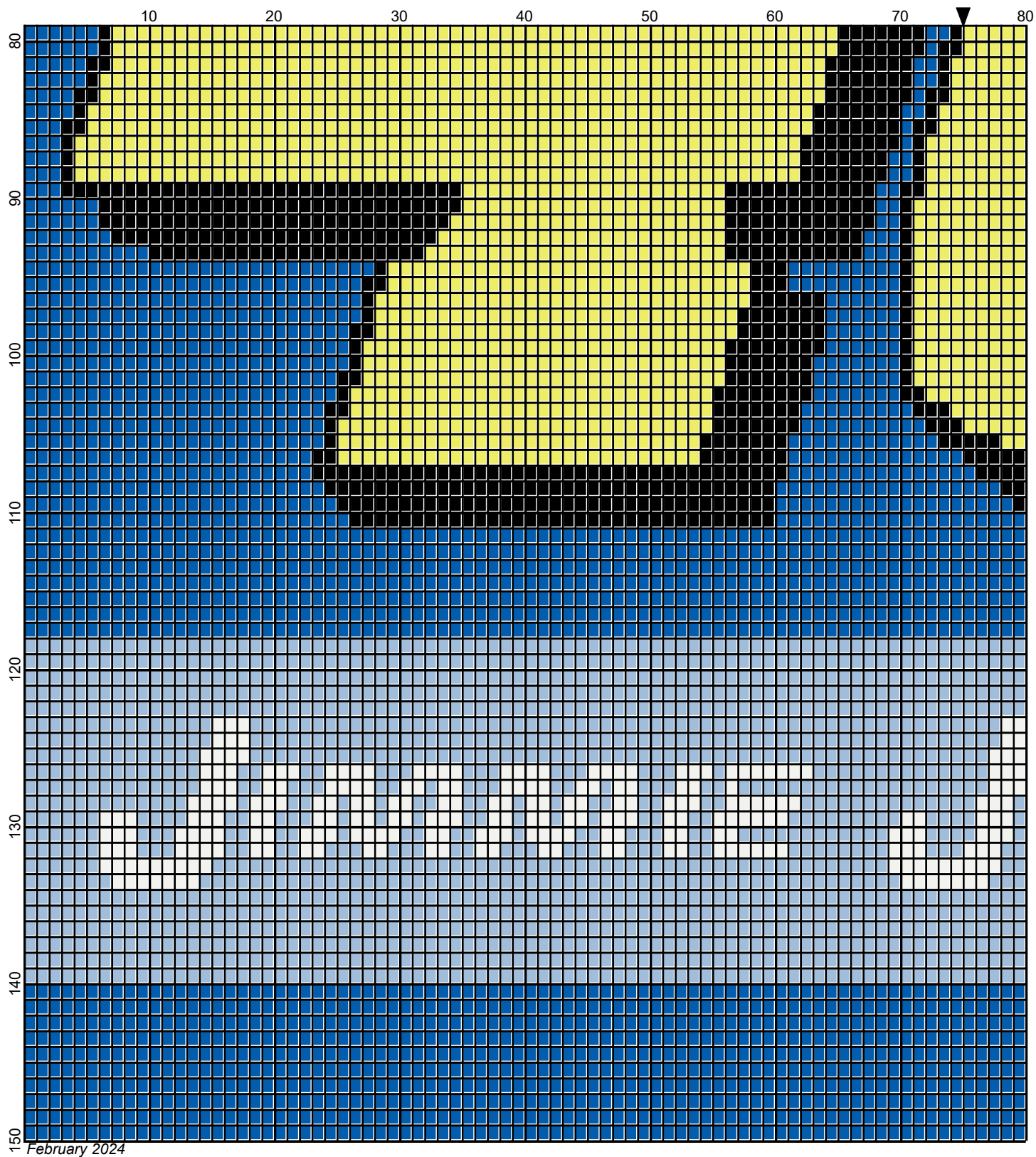
YELLOW : 7 OUNCES/391 YDS



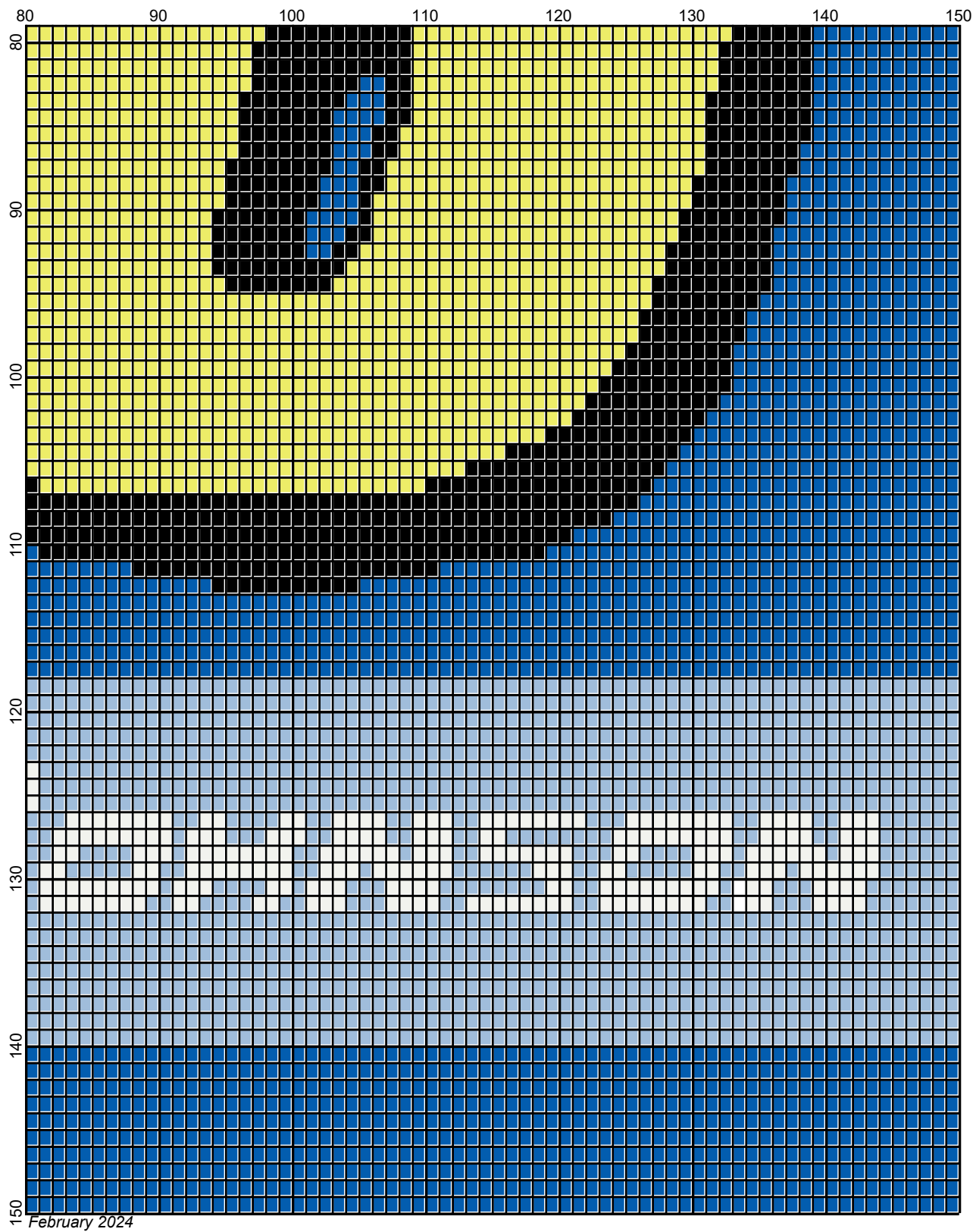
February 2024



February 2024



Legend:



RHS-3945 RHS-312 RHS-324 RHS-381 RHS-316