

10

20

30

40

50

60

70

90

100

10

20

30

40

50

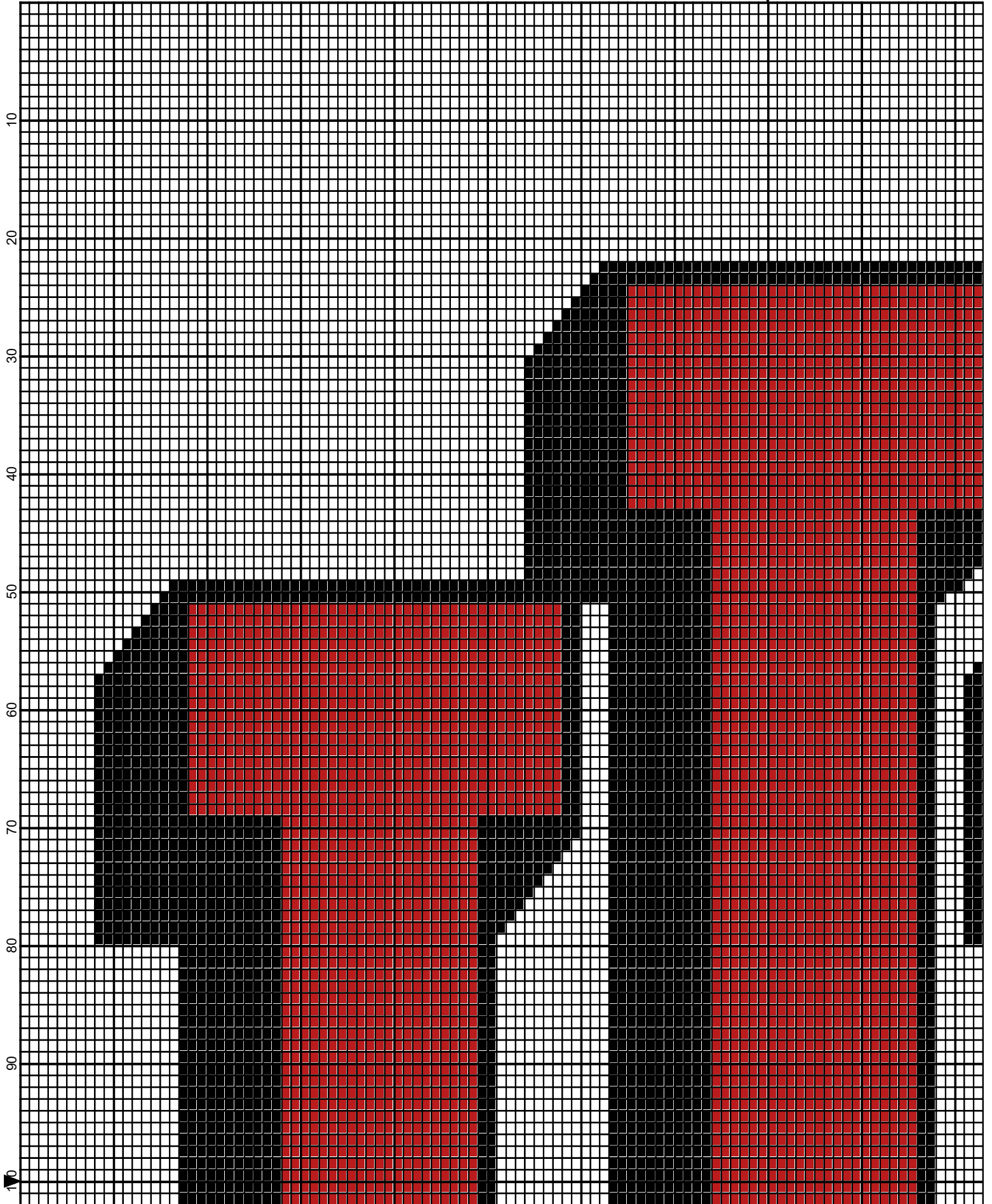
60

70

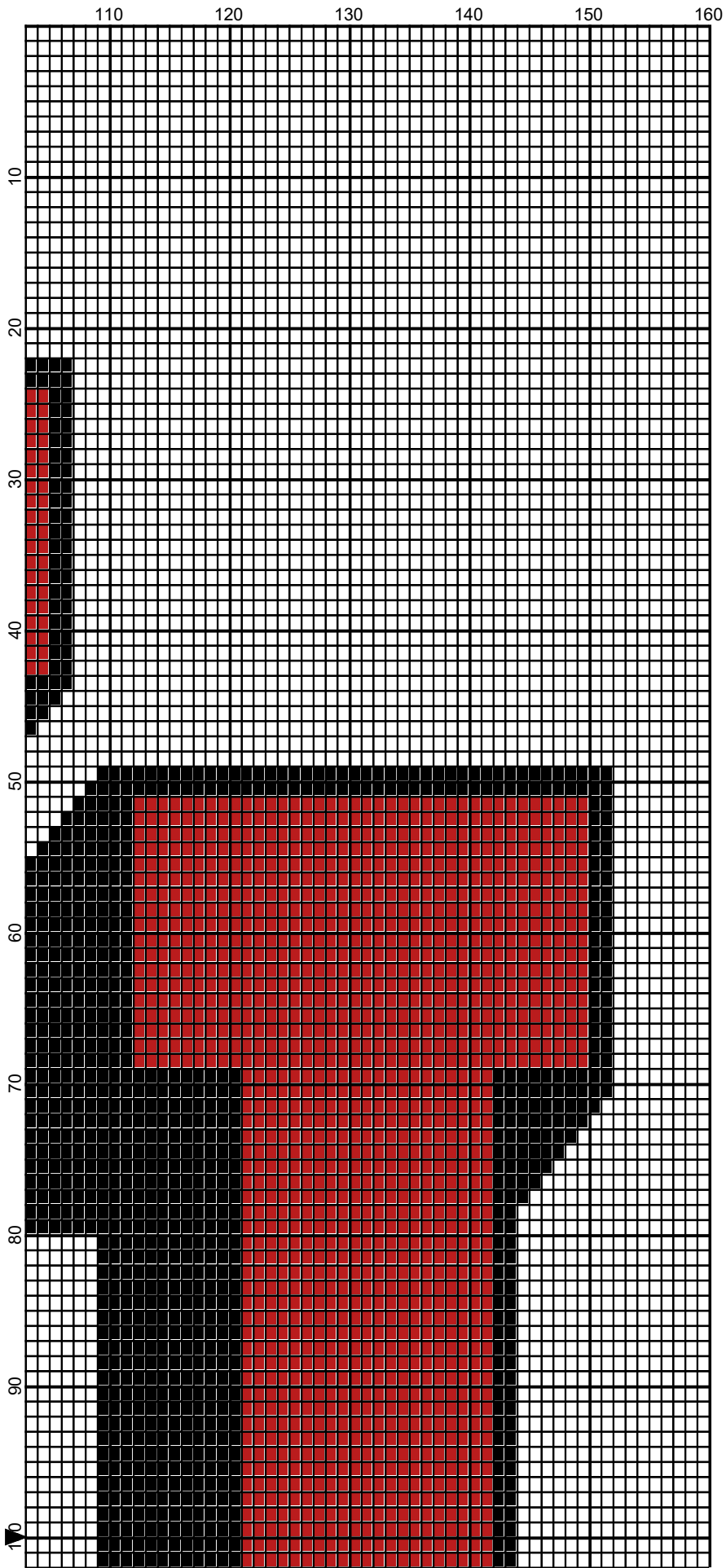
80

90

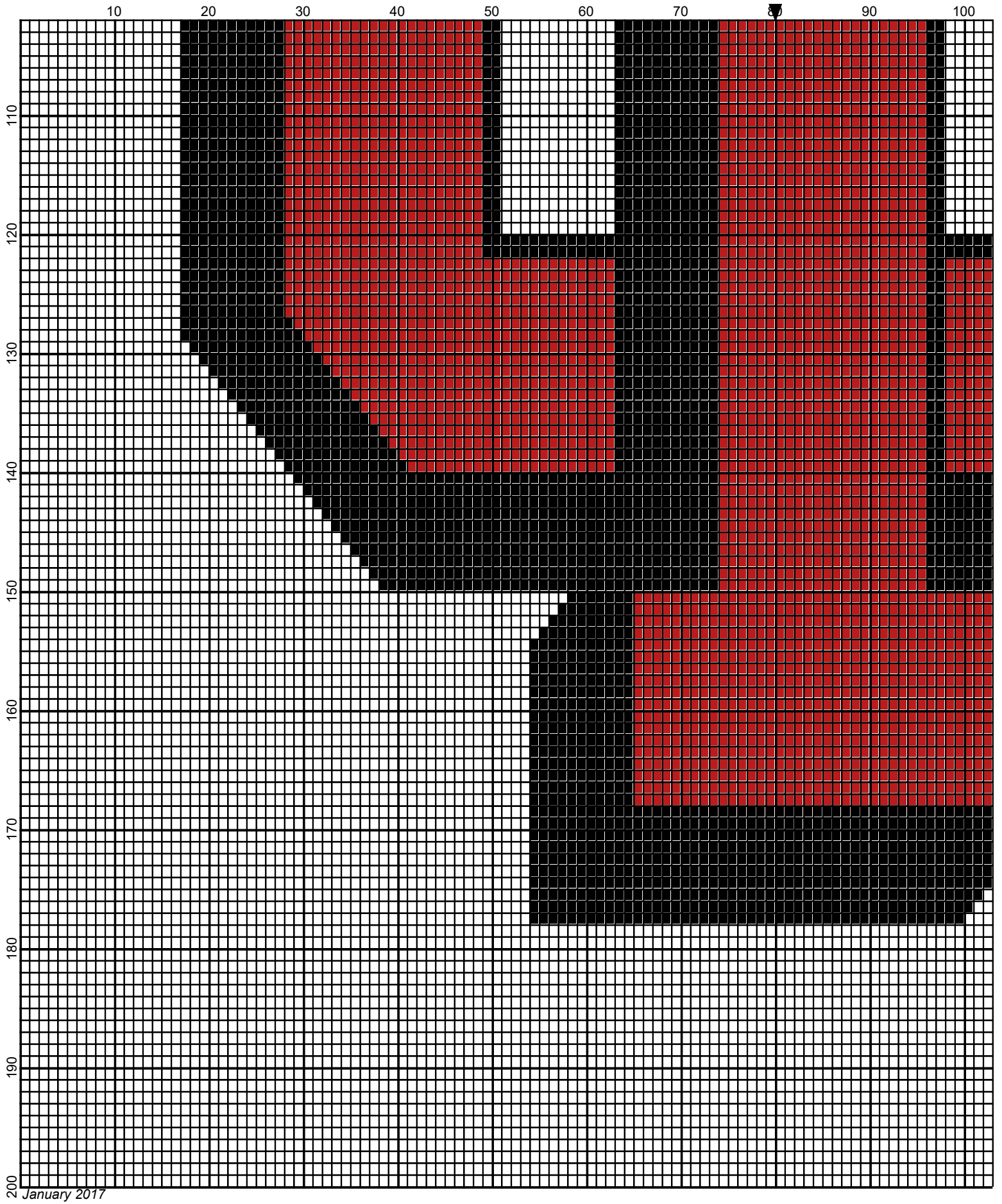
100



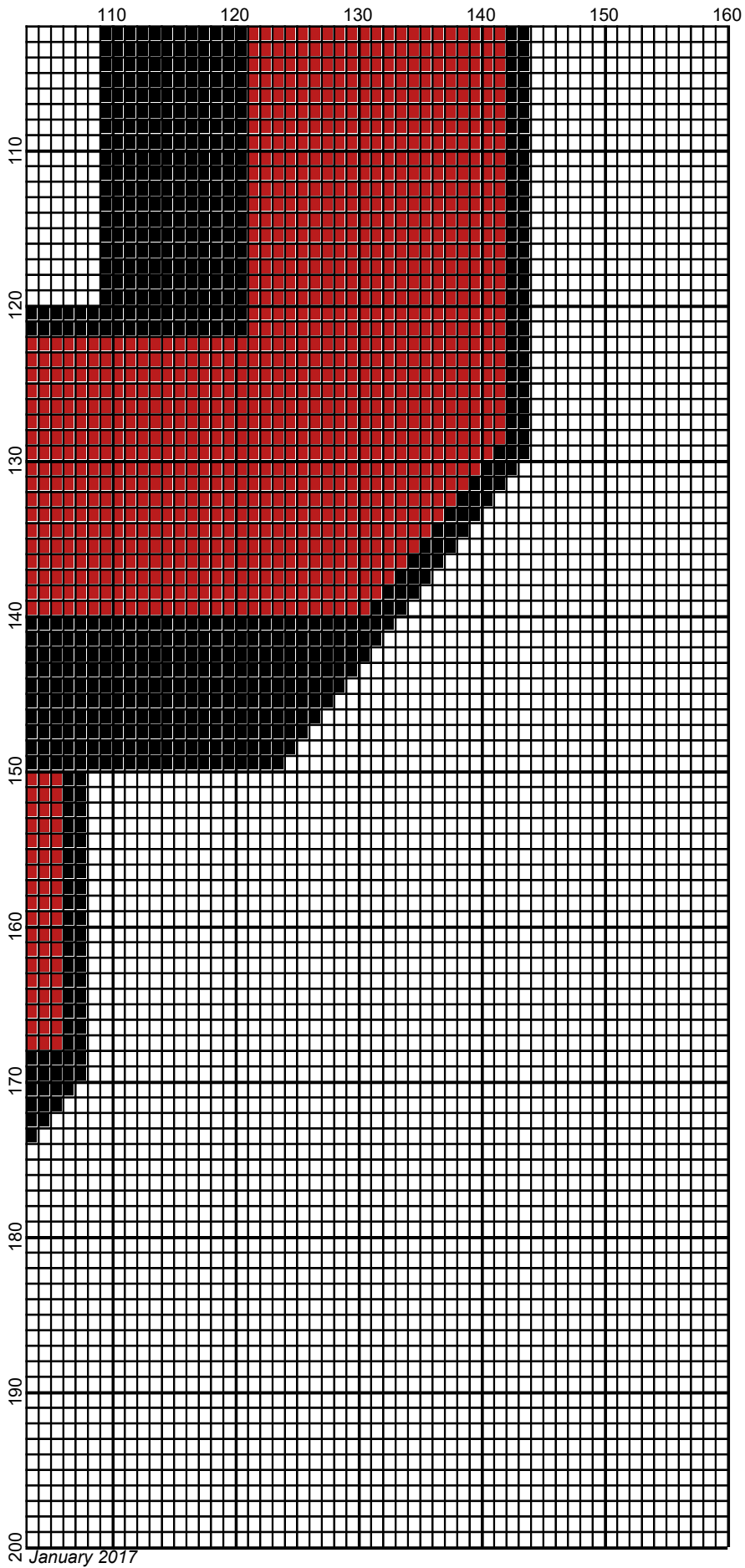
January 2017



January 2017



January 2017



January 2017

# indiana\_university\_logo\_160x200

---

**Author:** Donna Hammell  
**Company:** Donna's Crochet Shoppe  
**Copyright:** January 2017  
**Website:** www.donnascrochetshoppe.com  
**Grid Size:** 160W x 200H  
**Design Area:** 16.00" x 25.00" (160 x 200 stitches)

## Legend:

■ [2] RHC 312 Black      ■ [2] RHC 902 Jockey Red      □ [2] RHC 001 White

Instructions for using the graph.

GAUGE= 5 STS = 1"  
4 ROWS = 1"

I USED SIZE "H" AFGHAN HOOK, USE WHATEVER SIZE GIVES YOU THE CORRECT GAUGE. CAN BE DONE IN AFGHAN STITCH OR SINGLE CROCHET.

EACH SQUARE ON THE GRAPH REPRESENTS 1 STITCH. FOR SINGLE CROCHET READ THE CHART FROM RIGHT TO LEFT, AND THEN LEFT TO RIGHT. IF USING AFGHAN STITCH ALWAYS READ FROM THE RIGHT.

TO START: CHAIN ONE MORE STITCH THAN GRAPH.

## ESTIMATED YARN NEEDED:

BLACK :8 OUNCES  
WHITE: 24 OUNCES  
RED:14 OUNCES  
SILVER :26 OUNCES