




Legend:
RHS-320 RHS-316 RHS-387

george_washington_university_capital_200x200

Author: Donna Hammell
Copyright: January 2025
Website: www.donnascrochetshoppe.com
Grid Size: 200W x 200H
Design Area: 20.00" x 25.00" (200 x 200 stitches)

Legend:

 [2] RHS 320 Cornmeal  [2] RHS 316 Soft White  [2] RHS 387 Soft navy

Instructions for using the graph.

GAUGE= 5 STS = 1"
4 ROWS = 1"

I USED SIZE "H" AFGHAN HOOK,USE WHATEVER SIZE GIVES YOU THE CORRECT GAUGE. CAN BE DONE IN AFGHAN STITCH OR SINGLE CROCHET.

EACH SQUARE ON THE GRAPH REPRESENTS 1 STITCH. FOR SINGLE CROCHET READ THE CHART FROM RIGHT TO LEFT, AND THEN LEFT TO RIGHT. IF USING AFGHAN STITCH ALWAYS READ FROM THE RIGHT.

TO START: CHAIN ONE MORE STITCH THAN GRAPH.

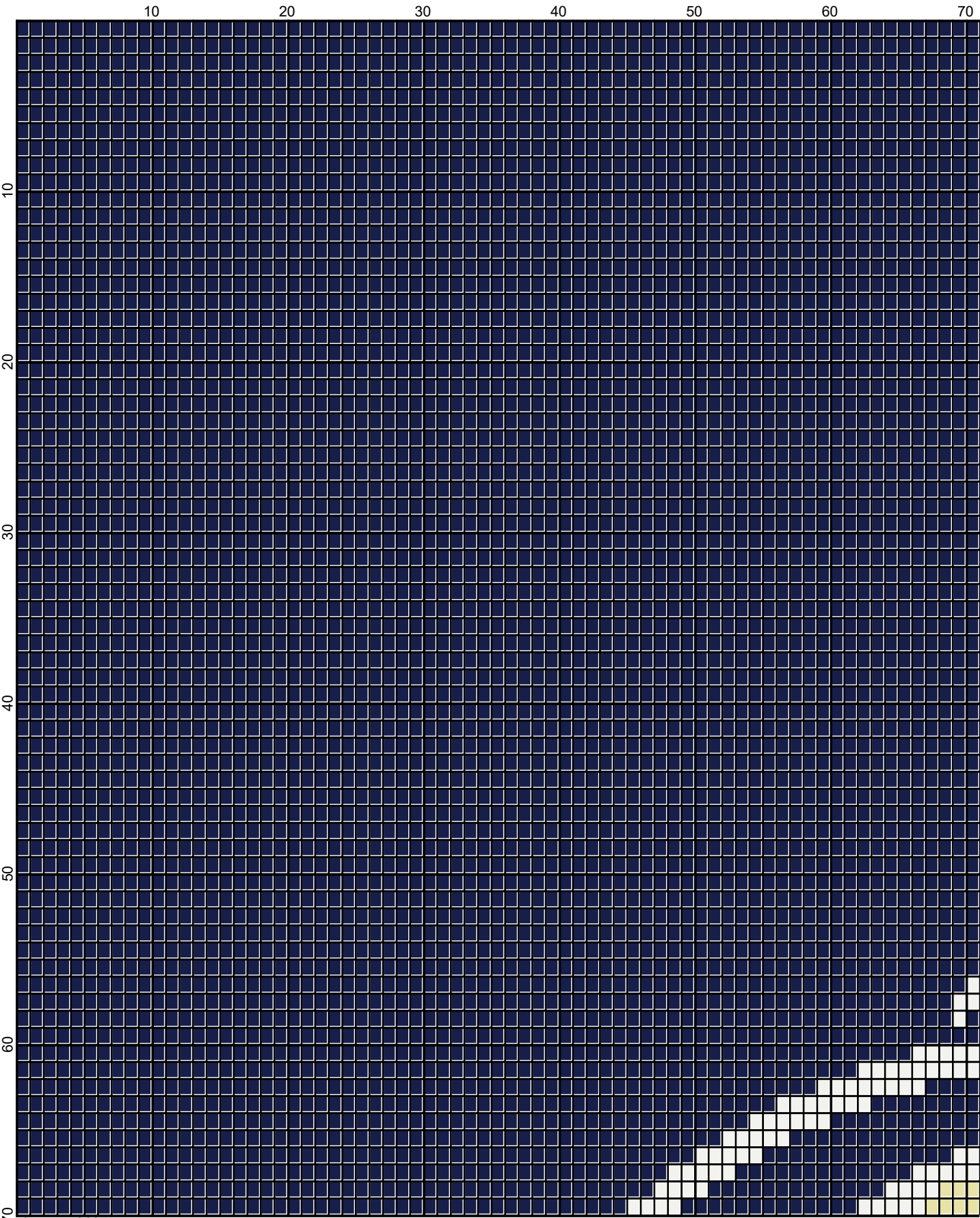
IF YOU NEED TO ADD STITCHES TO MAKE THE PIECE WIDER, AND ADD ROWS TO MAKE IT LONGER. THE DESIGN IS CENTERED, SO ADD STITCHES EVENLY TO BOTH SIDES.

ESTIMATED RED HEART YARN NEEDED:

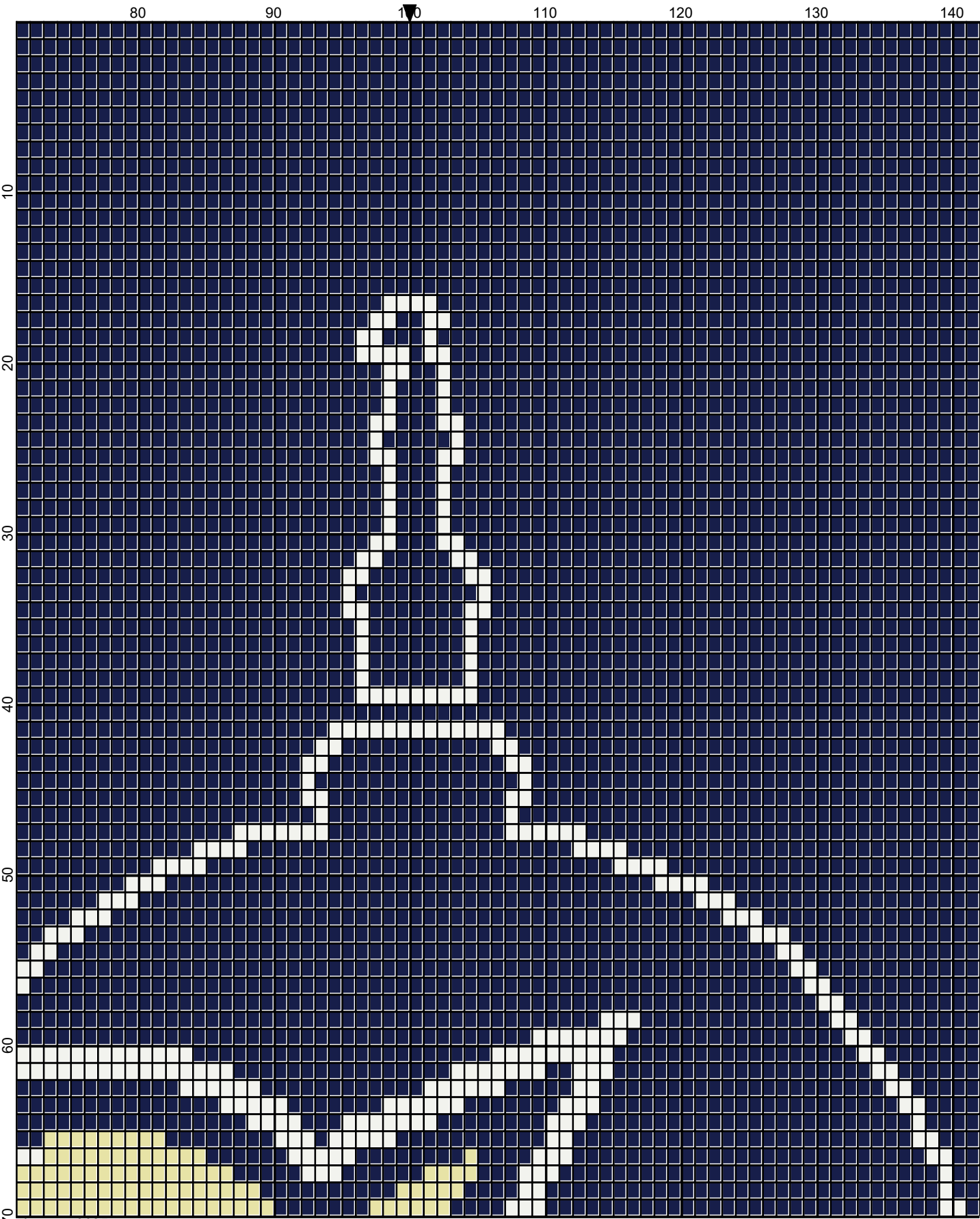
SOFT NAVY:42 OUNCES/3000 YDS

WHITE 6 OUNCES/310 YDS

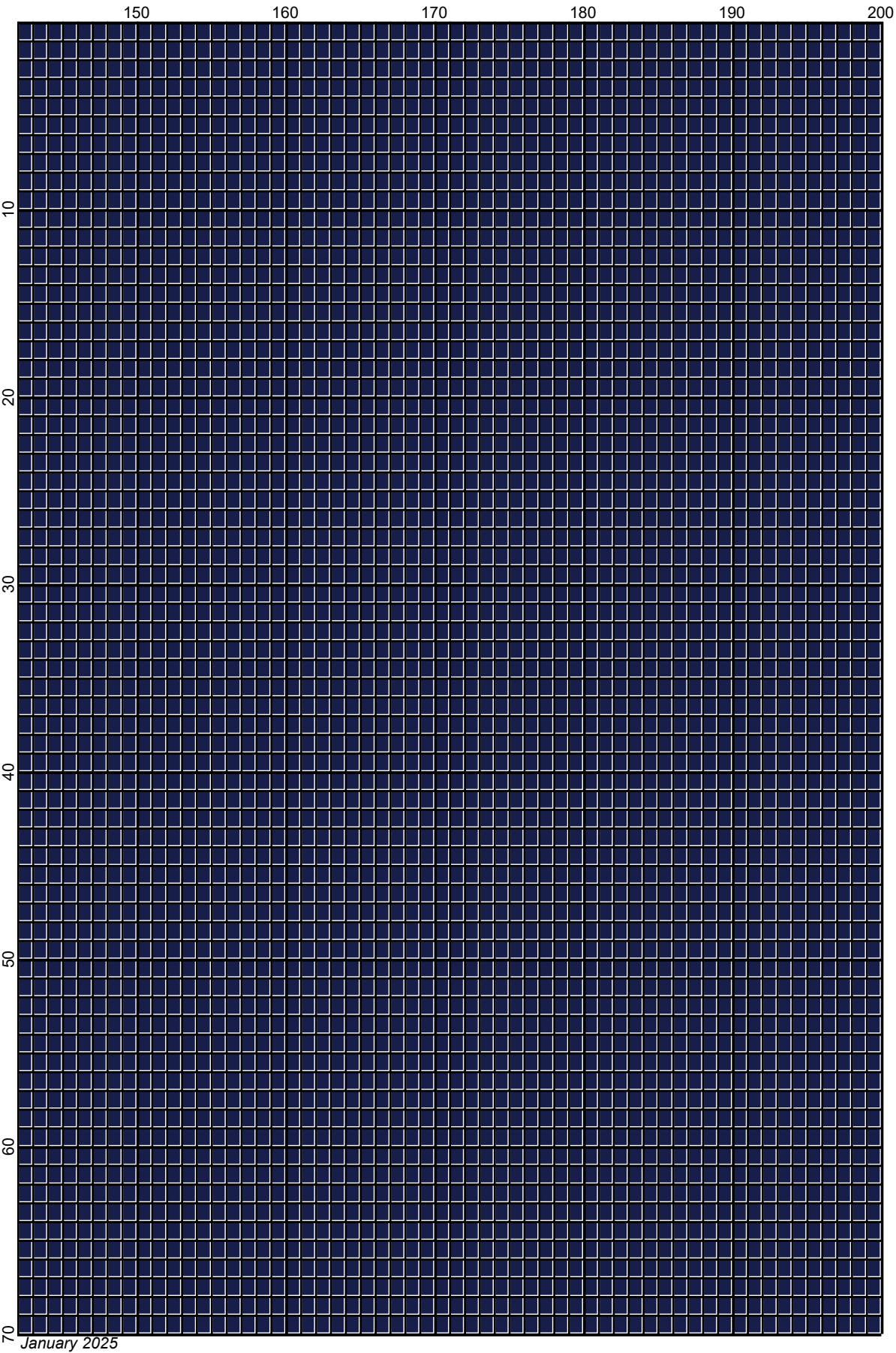
CORNMEAL/BUFF: 4 OUNCES/175 YDS



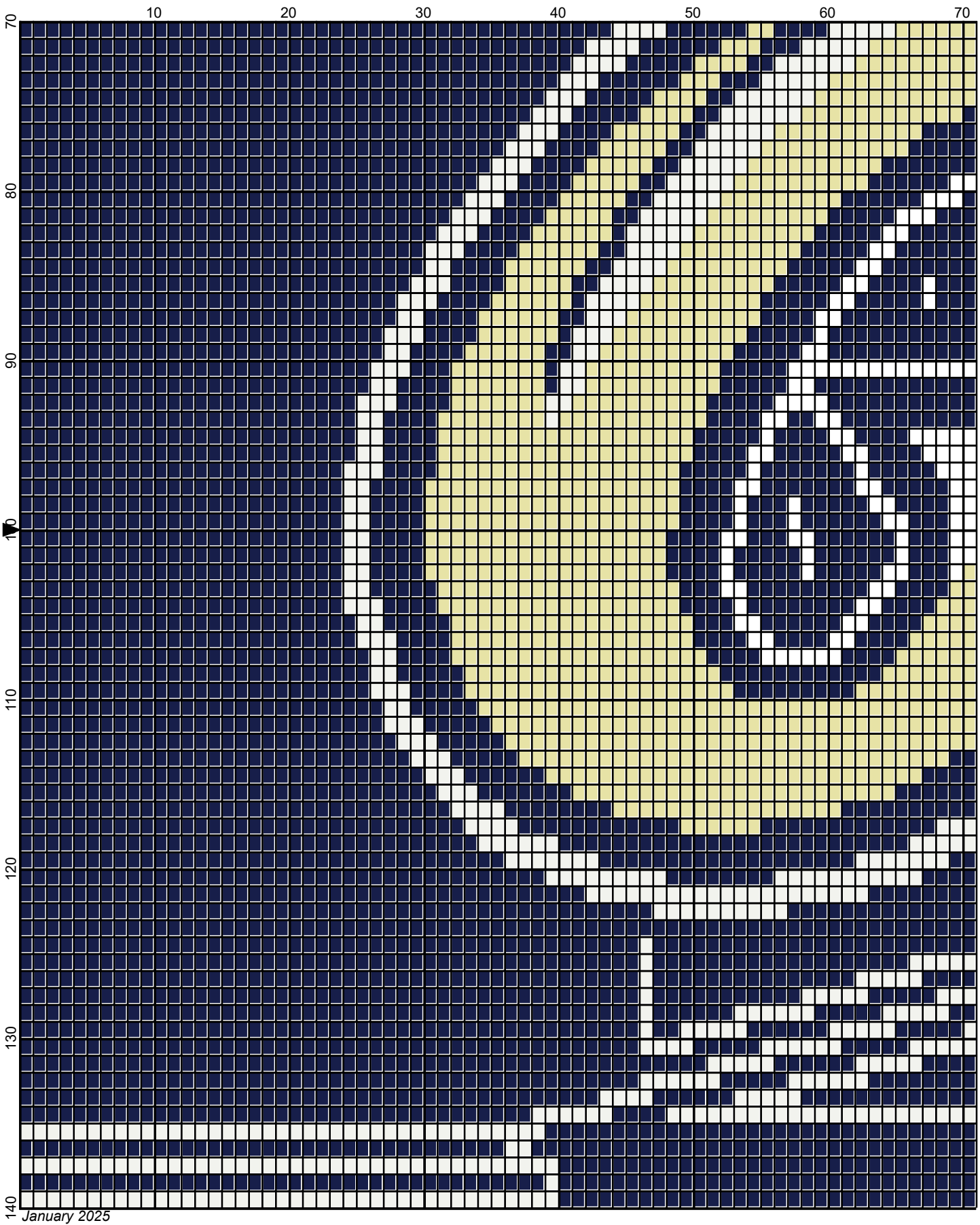
January 2025



January 2025

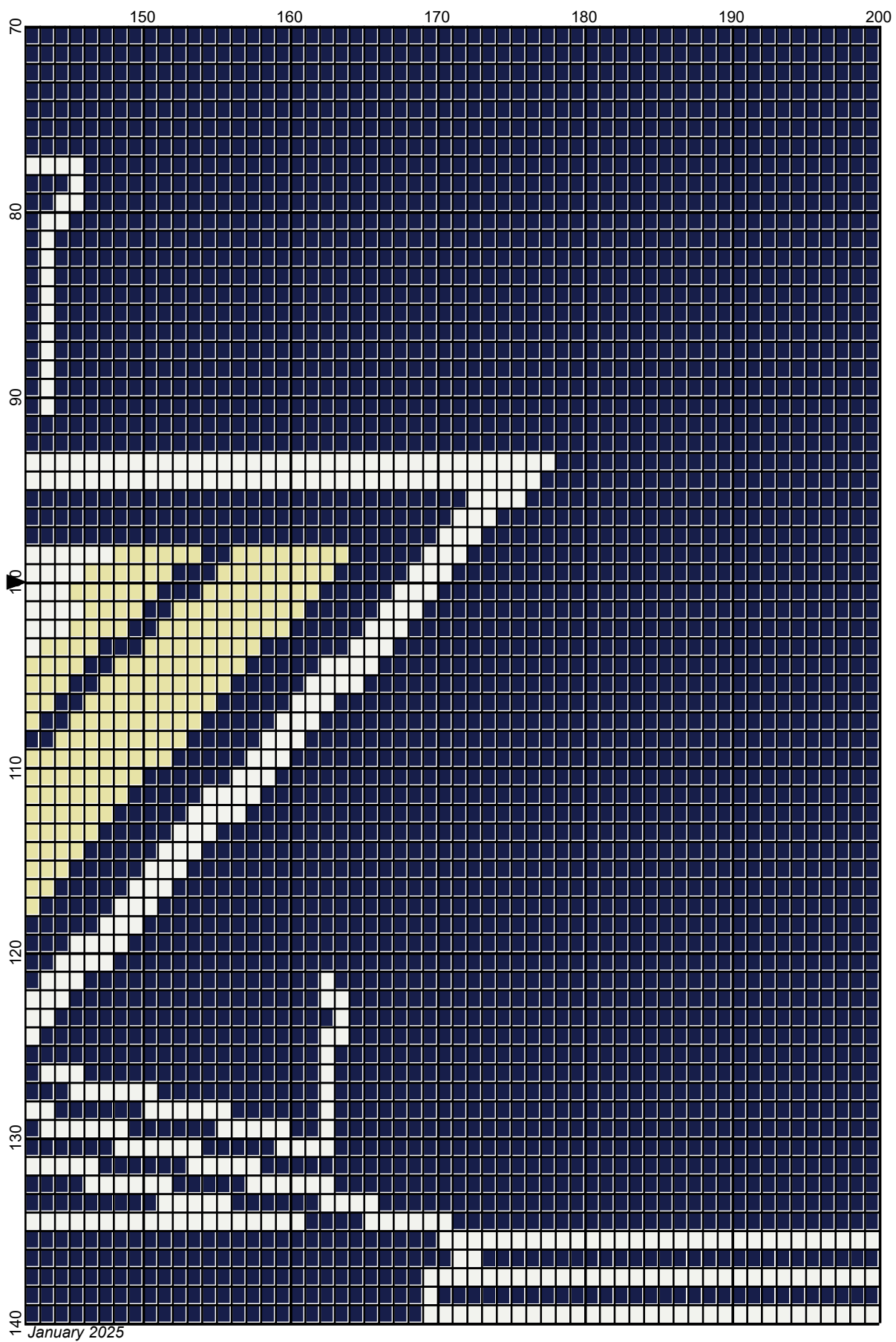


January 2025

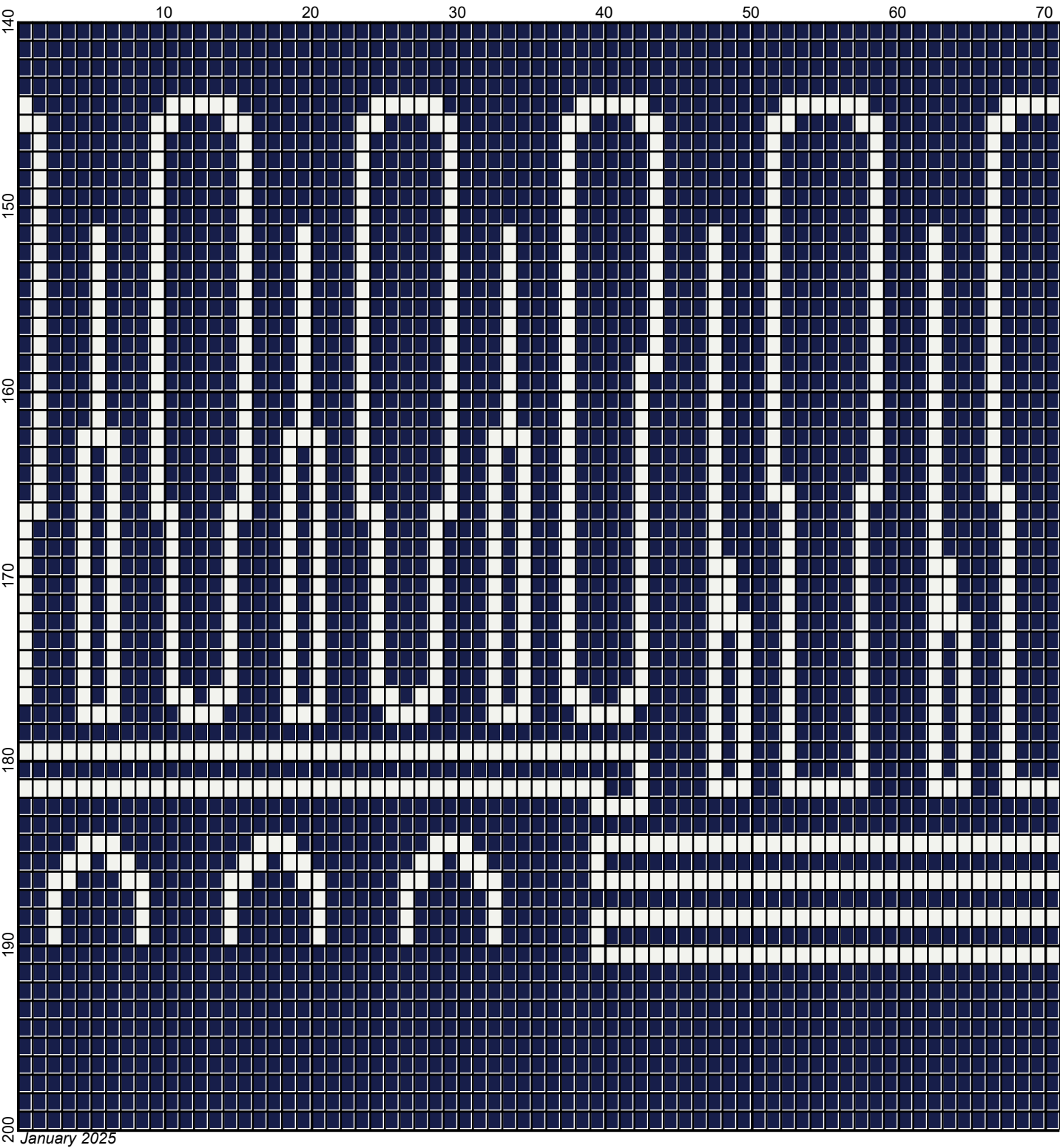




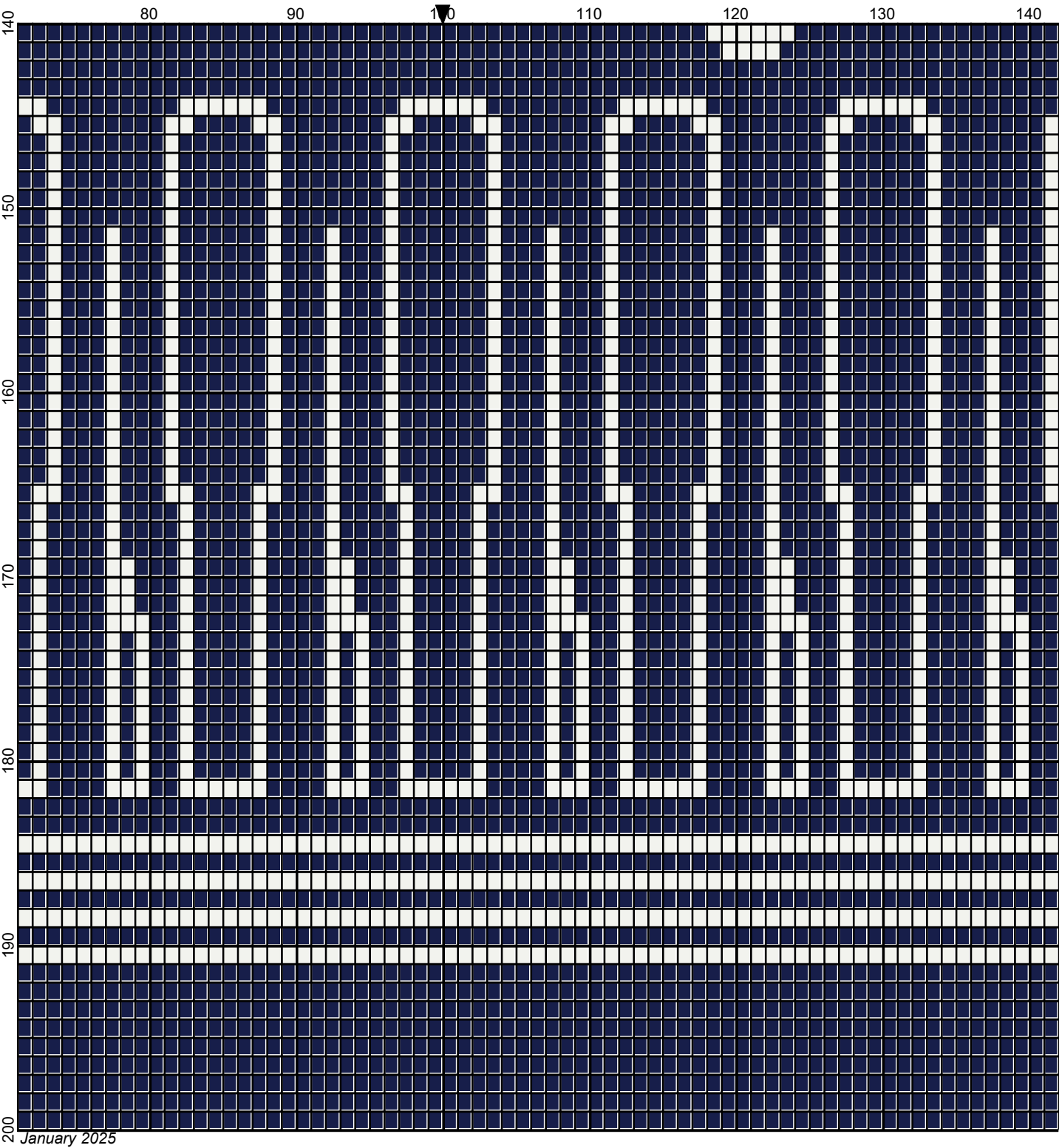
January 2025



January 2025



Legend:



RHS-320 RHS-316 RHS-387

