

Legend:




RHS-320  RHS-316  RHS-387

# george\_washington\_university\_200x200

---

**Author:** Donna Hammell  
**Copyright:** January 2025  
**Website:** [www.donnascrochetshoppe.com](http://www.donnascrochetshoppe.com)  
**Grid Size:** 200W x 200H  
**Design Area:** 20.00" x 25.00" (200 x 200 stitches)

## Legend:

 [2] RHS 320 Cornmeal     [2] RHS 316 Soft White     [2] RHS 387 Soft navy

Instructions for using the graph.

GAUGE= 5 STS = 1"  
4 ROWS = 1"

I USED SIZE "H" AFGHAN HOOK,USE WHATEVER SIZE GIVES YOU THE CORRECT GAUGE. CAN BE DONE IN AFGHAN STITCH OR SINGLE CROCHET.

EACH SQUARE ON THE GRAPH REPRESENTS 1 STITCH. FOR SINGLE CROCHET READ THE CHART FROM RIGHT TO LEFT, AND THEN LEFT TO RIGHT. IF USING AFGHAN STITCH ALWAYS READ FROM THE RIGHT.

TO START: CHAIN ONE MORE STITCH THAN GRAPH.

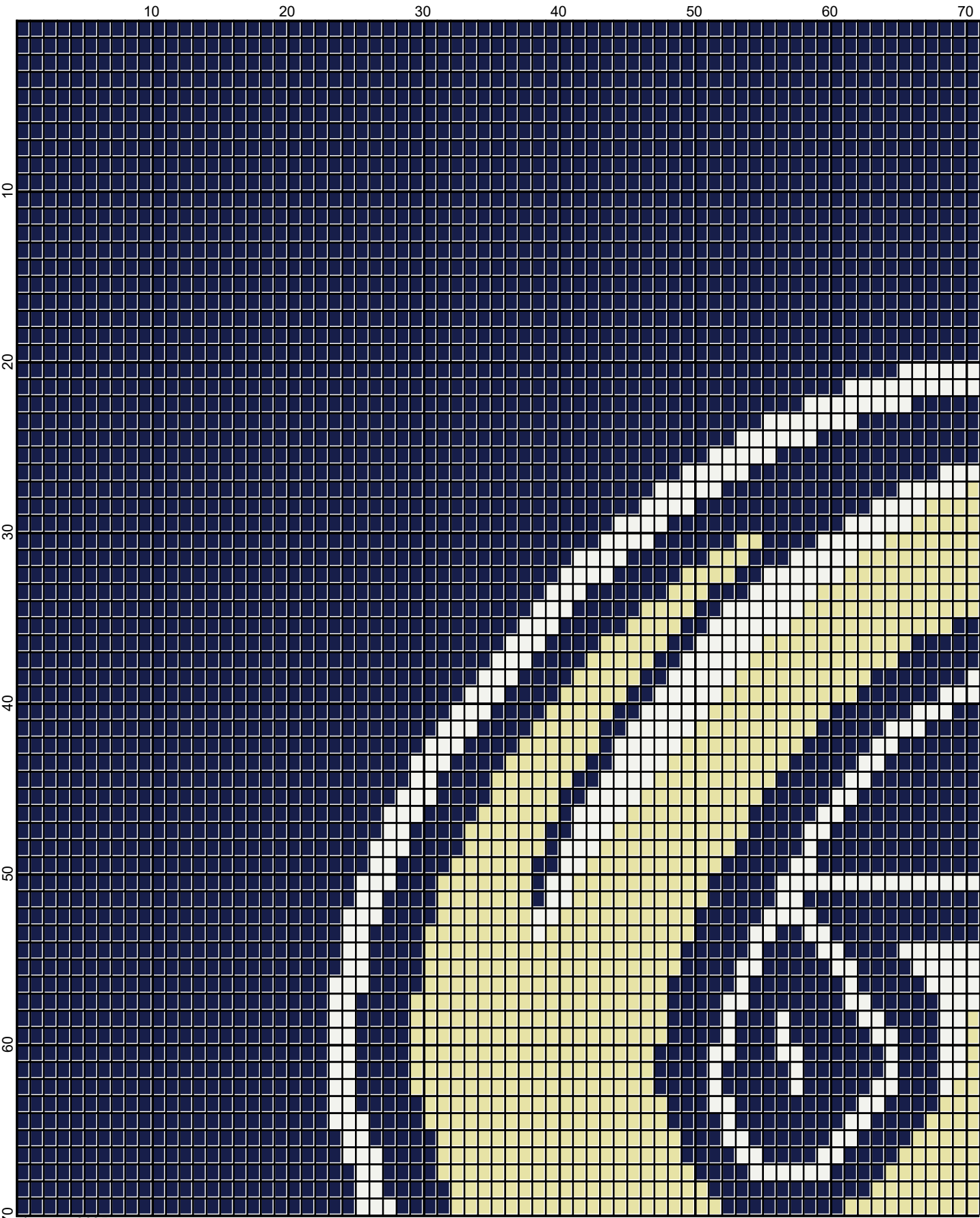
IF YOU NEED TO ADD STITCHES TO MAKE THE PIECE WIDER, AND ADD ROWS TO MAKE IT LONGER. THE DESIGN IS CENTERED, SO ADD STITCHES EVENLY TO BOTH SIDES.

ESTIMATED RED HEART YARN NEEDED:

SOFT NAVY:32 OUNCES/1590 YDS

WHITE 6 OUNCES/240 YDS

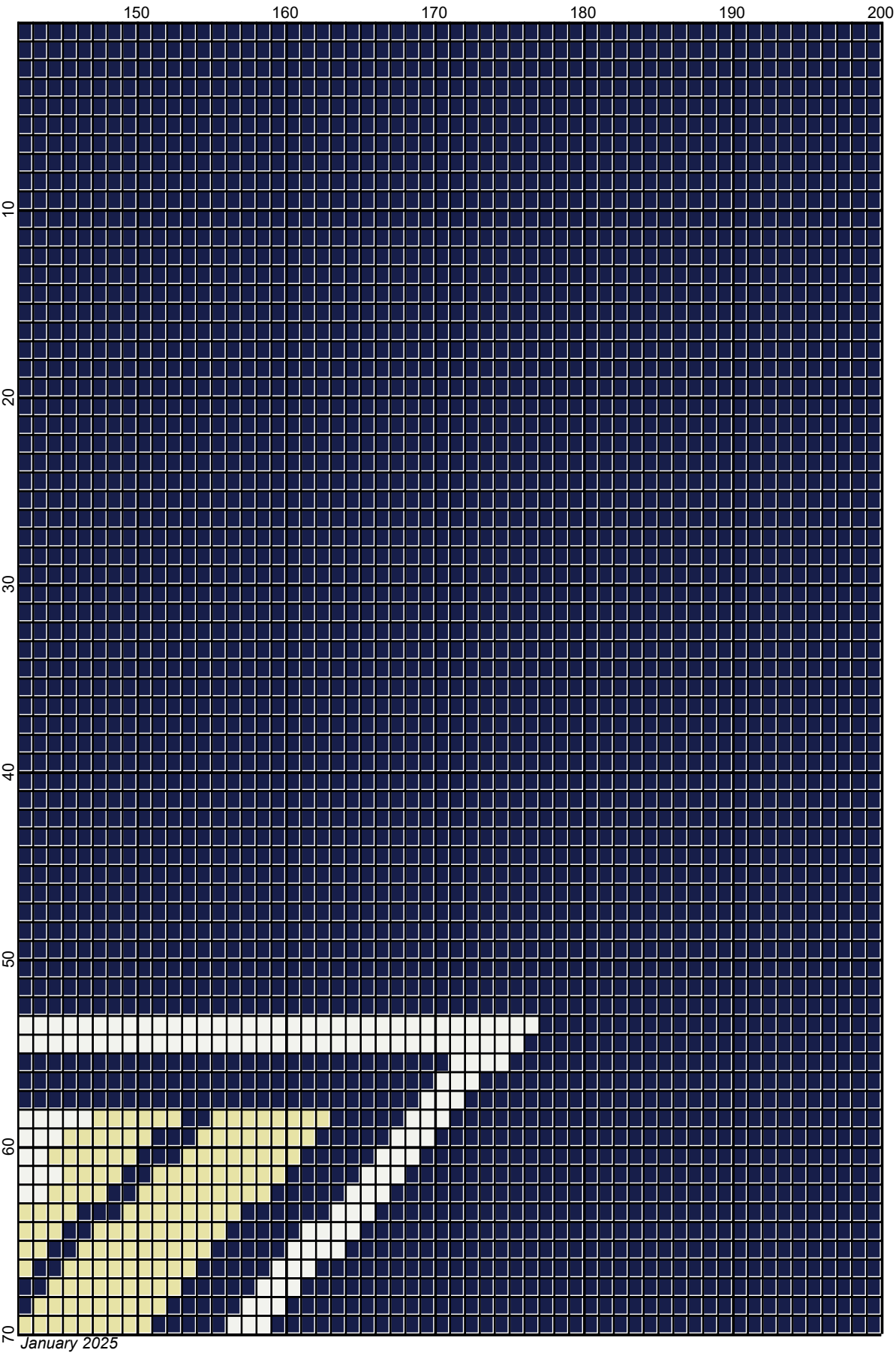
CORNMEAL/BUFF: 16 OUNCES/780 YDS

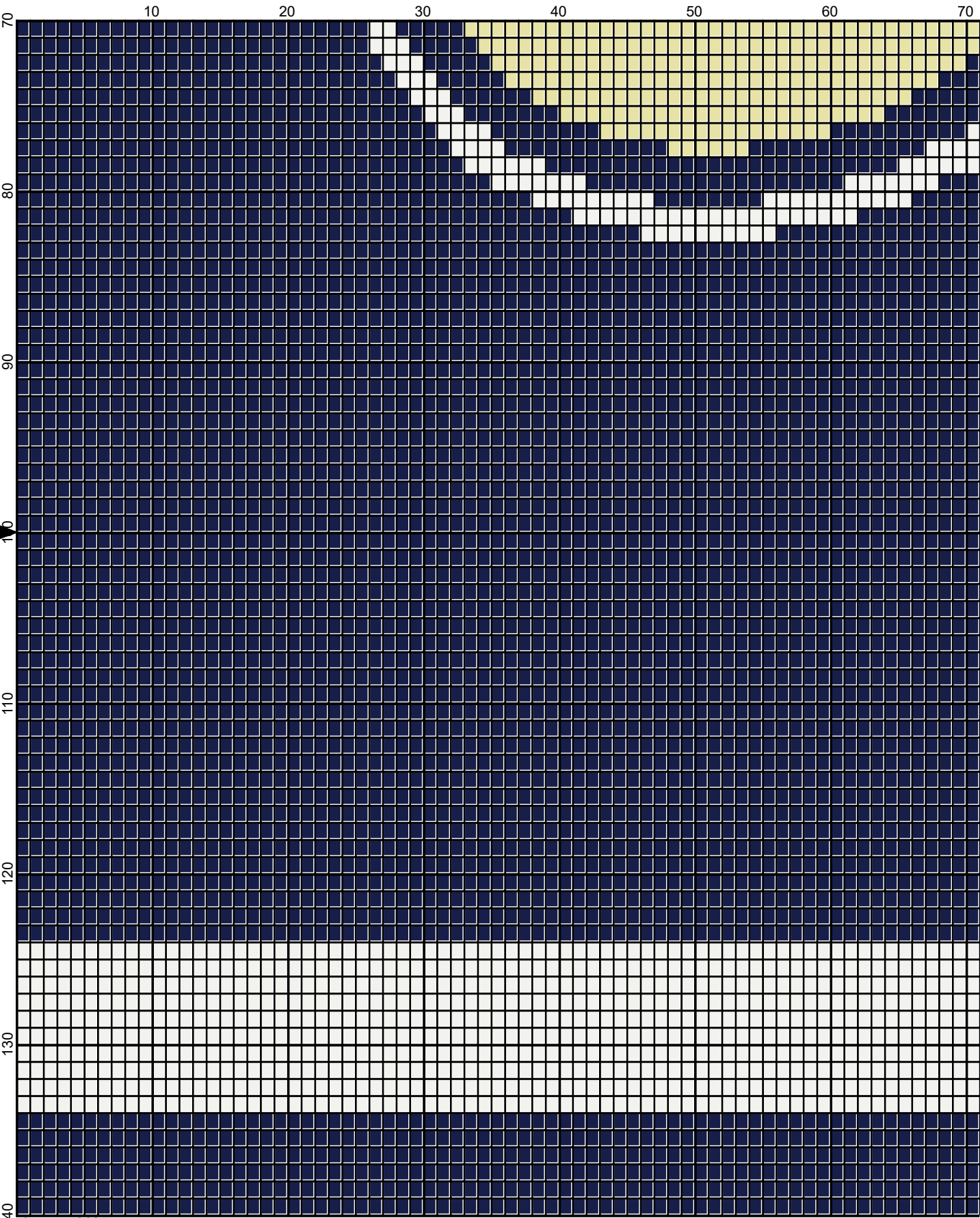


January 2025

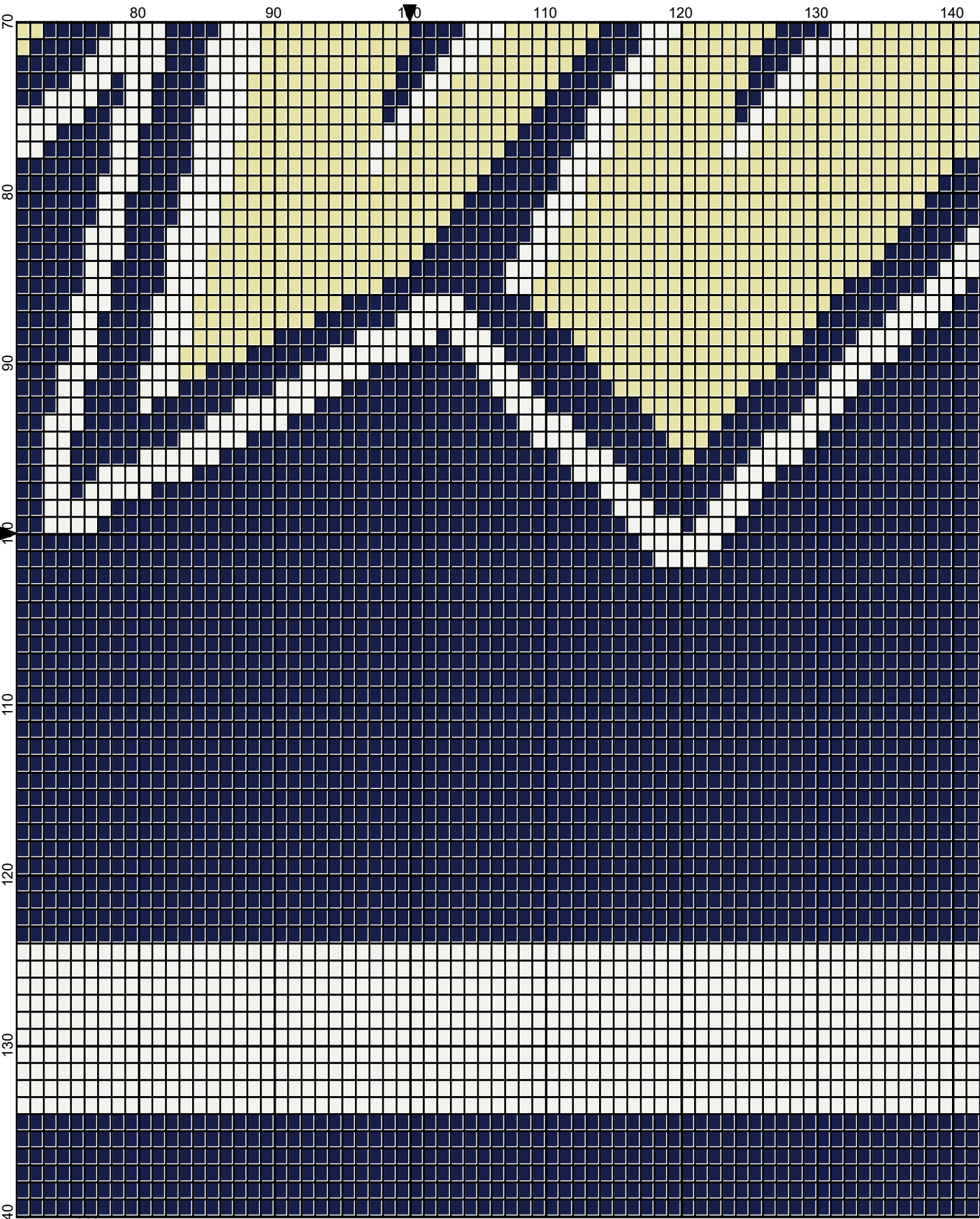


January 2025

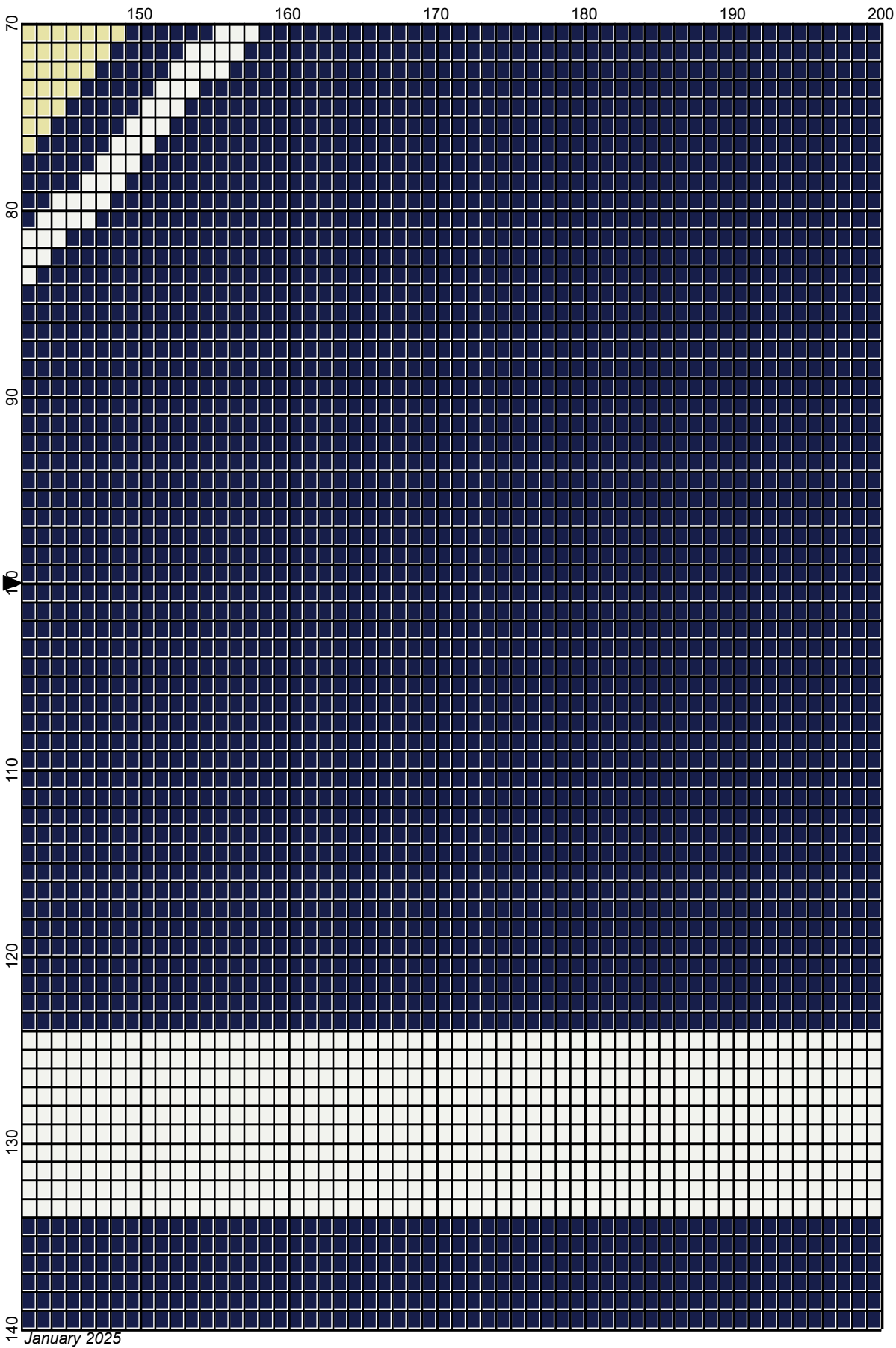




January 2025



January 2025





Legend:



RHS-320 RHS-316 RHS-387

