

Legend:




■ RHS-390 ■ RHS-385 □ RHS-316

# dodgers\_baseball\_80x100

---

**Author:** Donna Hammell  
**Copyright:** October 2025  
**Website:** [www.donnascrochetshoppe.com](http://www.donnascrochetshoppe.com)  
**Grid Size:** 80W x 100H  
**Design Area:** 8.00" x 12.50" (80 x 100 stitches)

## Legend:

 [2] RHS 390 Hot Red       [2] RHS 385 Royal       [2] RHS 316 Soft White

Instructions for using the graph.

GAUGE= 5 STS = 1"  
4 ROWS = 1"

I USED SIZE "H" AFGHAN HOOK,USE WHATEVER SIZE GIVES YOU THE CORRECT GAUGE. CAN BE DONE IN AFGHAN STITCH OR SINGLE CROCHET.

EACH SQUARE ON THE GRAPH REPRESENTS 1 STITCH. FOR SINGLE CROCHET READ THE CHART FROM RIGHT TO LEFT, AND THEN LEFT TO RIGHT. IF USING AFGHAN STITCH ALWAYS READ FROM THE RIGHT.

TO START: CHAIN ONE MORE STITCH THAN GRAPH.

YOU WILL NEED TO ADD STITCHES TO MAKE THE PIECE WIDER, AND ADD ROWS TO MAKE IT LONGER. THE DESIGN IS CENTERED, SO ADD STITCHES EVENLY TO BOTH SIDES.

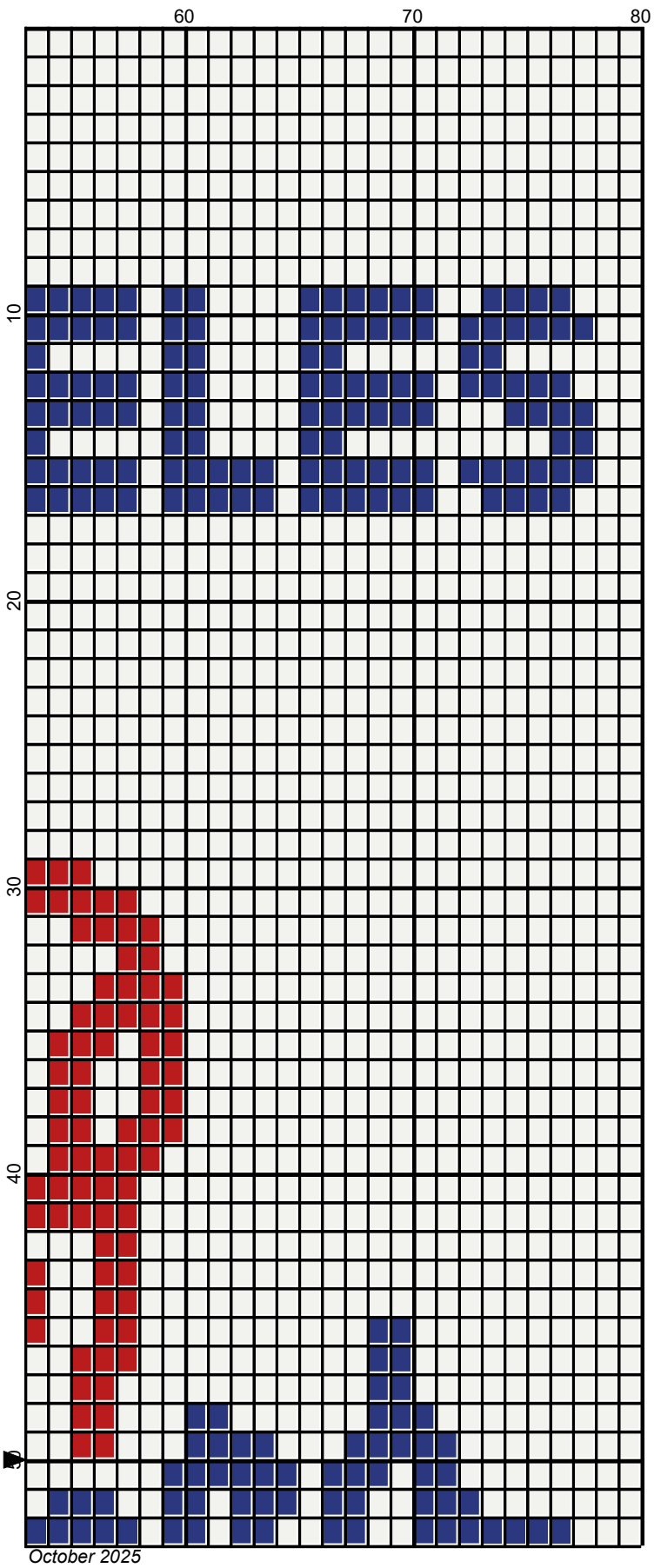
ESTIMATED RED HEART YARN NEEDED:

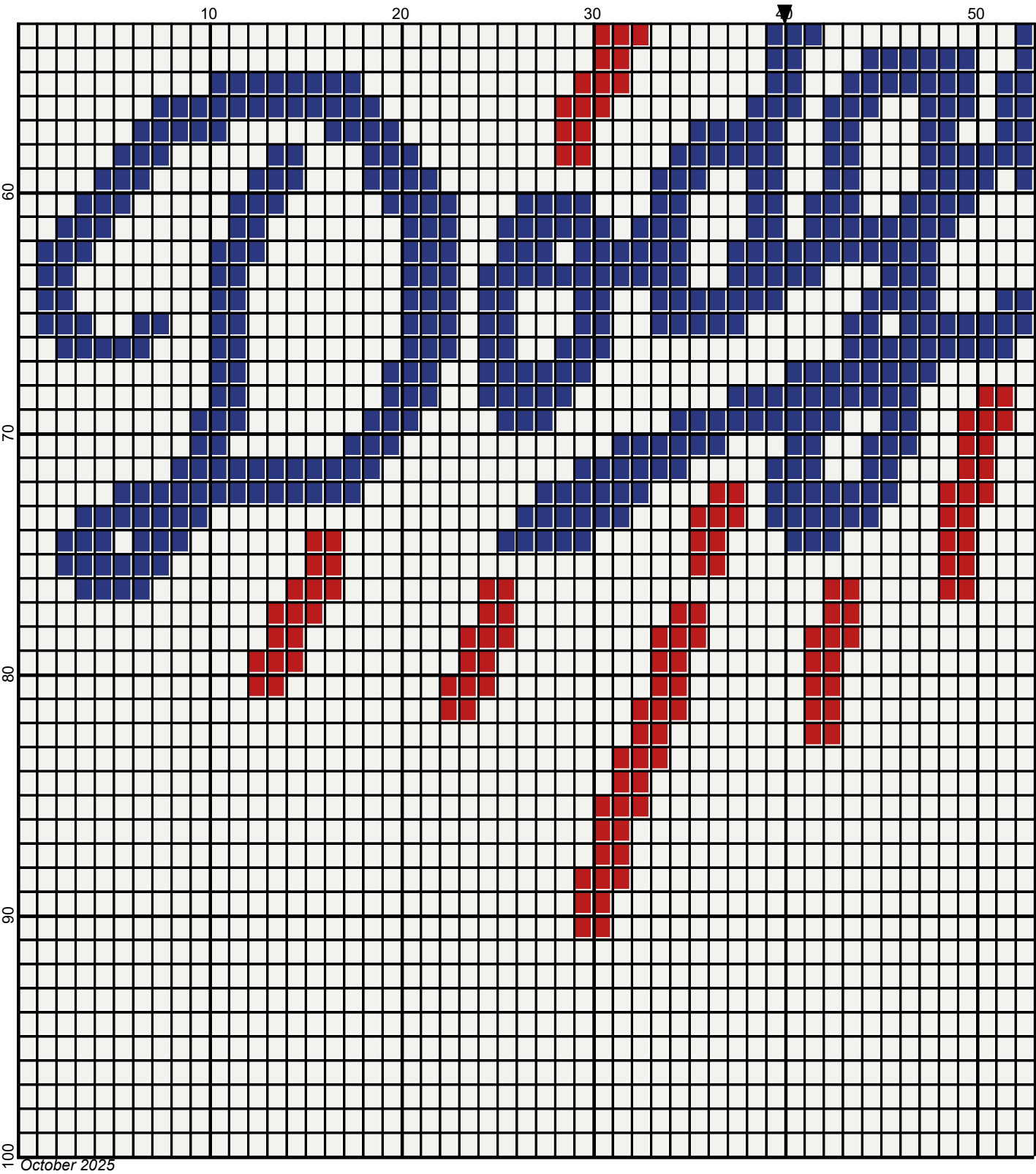
ROYAL BLUE:65 YDS

RED: 28 YDS

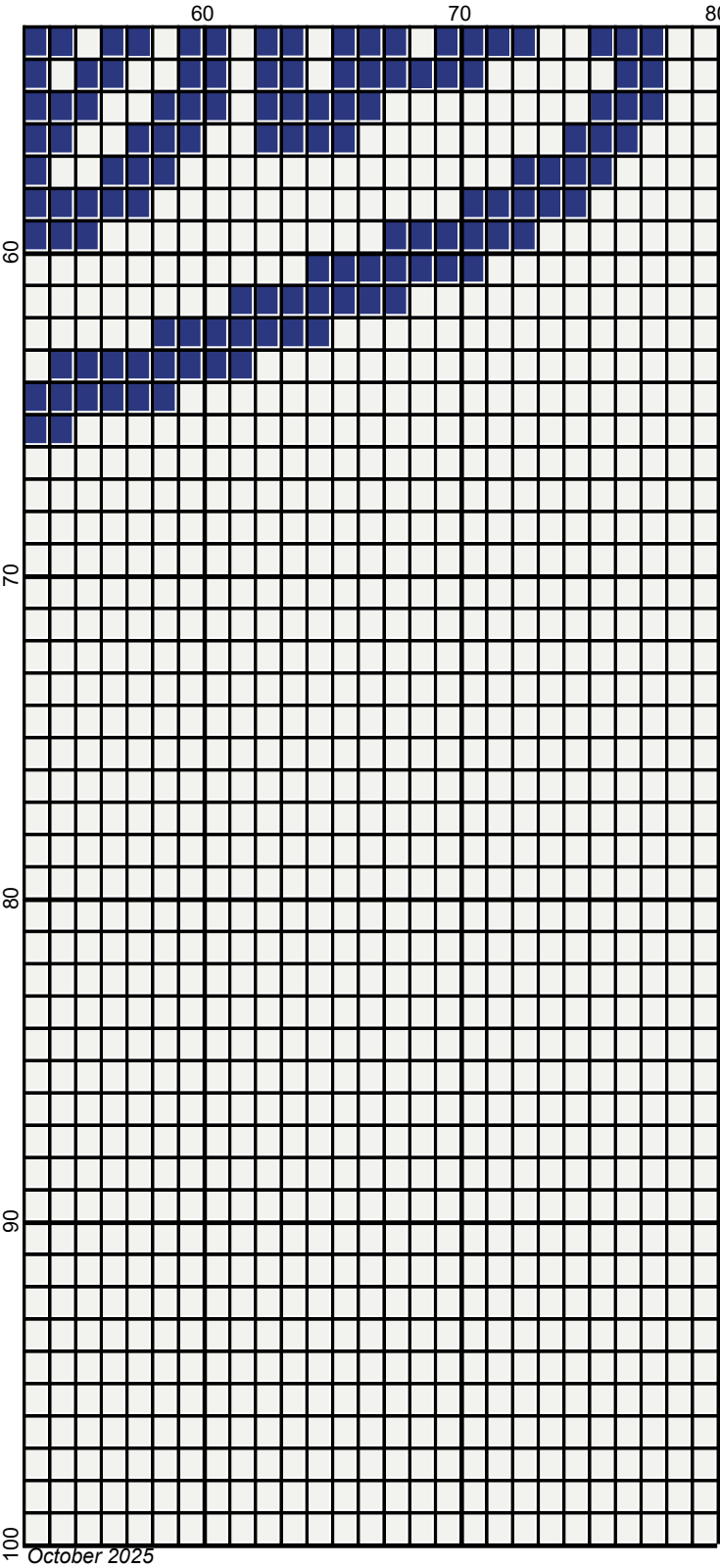
WHITE: 437 YDS







Legend:



RHS-390   RHS-385   RHS-316