



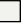



Legend:

- RHS-886 RHS-360 RHS-RH400 RHS-341 RHS-316 RHS-512

dignity_statue_180x200

Author: Donna Hammell
Copyright: March 2025
Website: www.donnascrochetshoppe.com
Grid Size: 180W x 200H
Design Area: 18.00" x 25.00" (180 x 200 stitches)

Legend:

 [2] RHS	886 Blue	 [2] RHS	RH400 Gray Heather	 [2] RHS	316 Soft White
 [2] RHS	360 Cafe Latte	 [2] RHS	341 Light Gray	 [2] RHS	512 Turqua

Instructions for using the graph.

GAUGE= 5 STS = 1"
4 ROWS = 1"

I USED SIZE "H" AFGHAN HOOK,USE WHATEVER SIZE GIVES YOU THE CORRECT GAUGE. CAN BE DONE IN AFGHAN STITCH OR SINGLE CROCHET.

EACH SQUARE ON THE GRAPH REPRESENTS 1 STITCH. FOR SINGLE CROCHET READ THE CHART FROM LEFT TO RIGHT. IF USING AFGHAN STITCH ALWAYS READ FROM THE RIGHT.

TO START: FOR SINGLE CROCHET CHAIN ONE MORE STITCH THAN GRAPH. FOR AFGHAN STITCH, CHAIN EXACT NUMBER

APPROXIMATE YARN USAGE

BLUE: 2 OUNCES/60 YDS

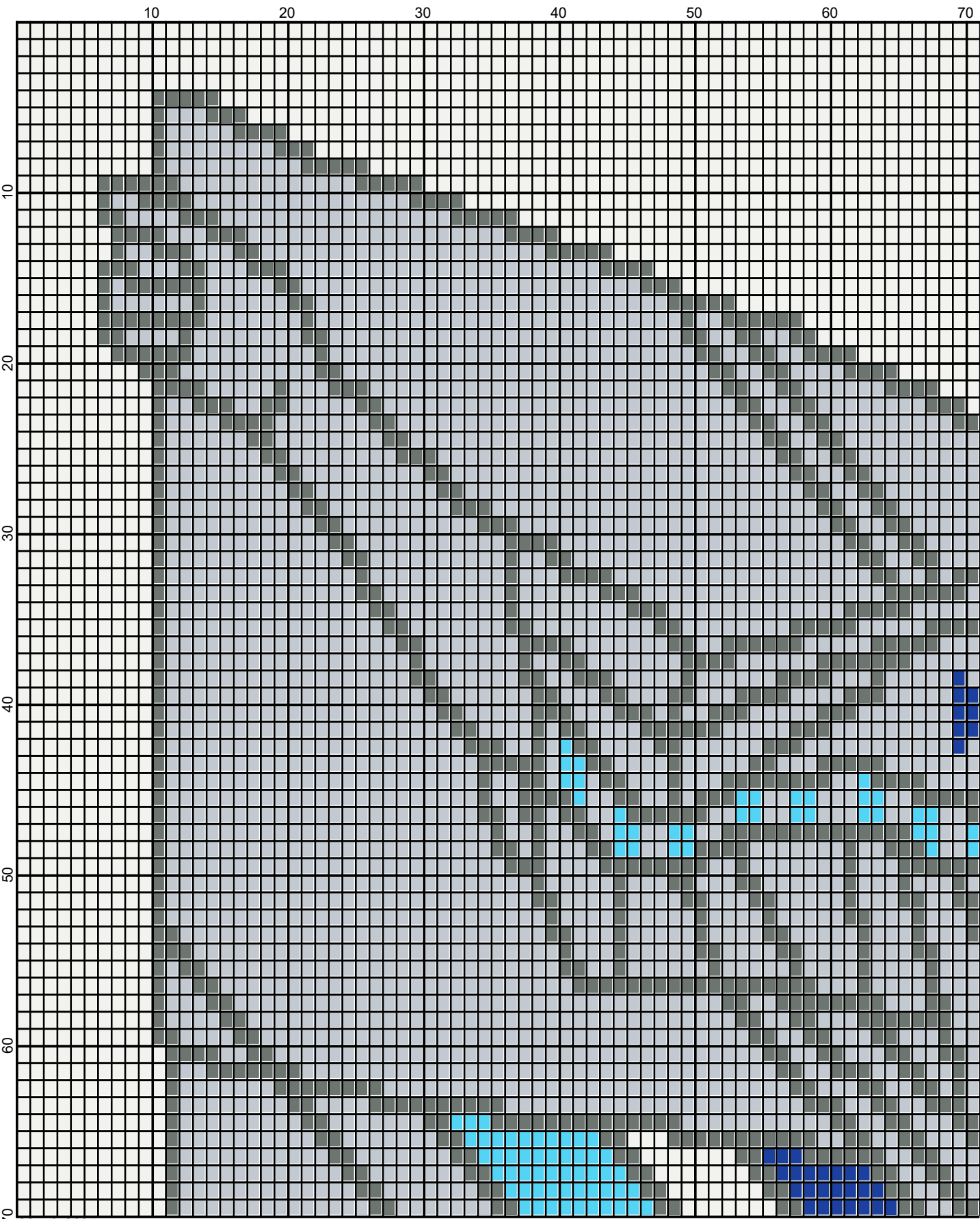
WHITE:16 OUNCES/805 YDS

GRAY HEATHER: 9 OUNCES/420 YDS

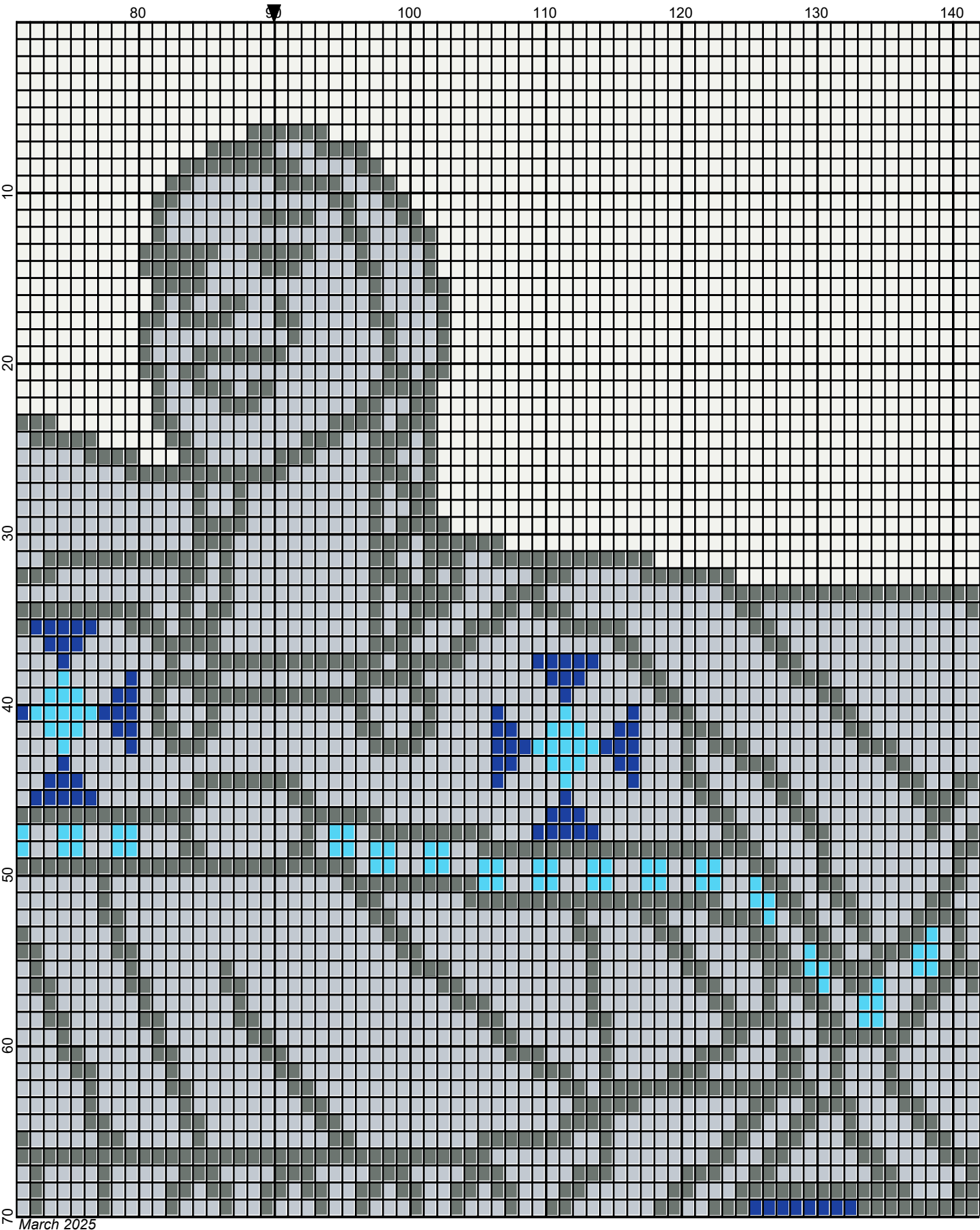
CAFE LATTE: 2 OUNCES/72 YDS

LT GRAY: 20 OUNCES/955 YDS

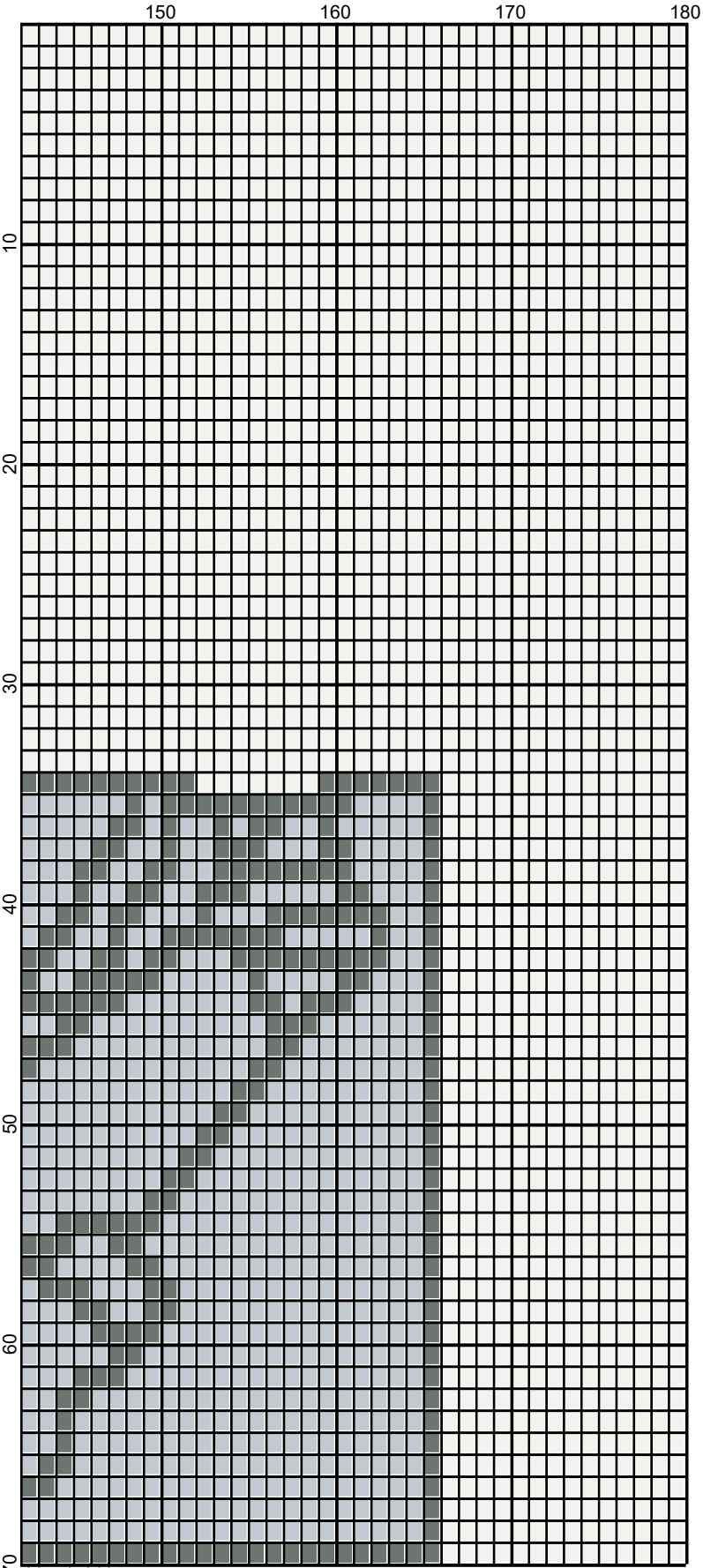
TURQUA: 1 OUNCE/55 YDS



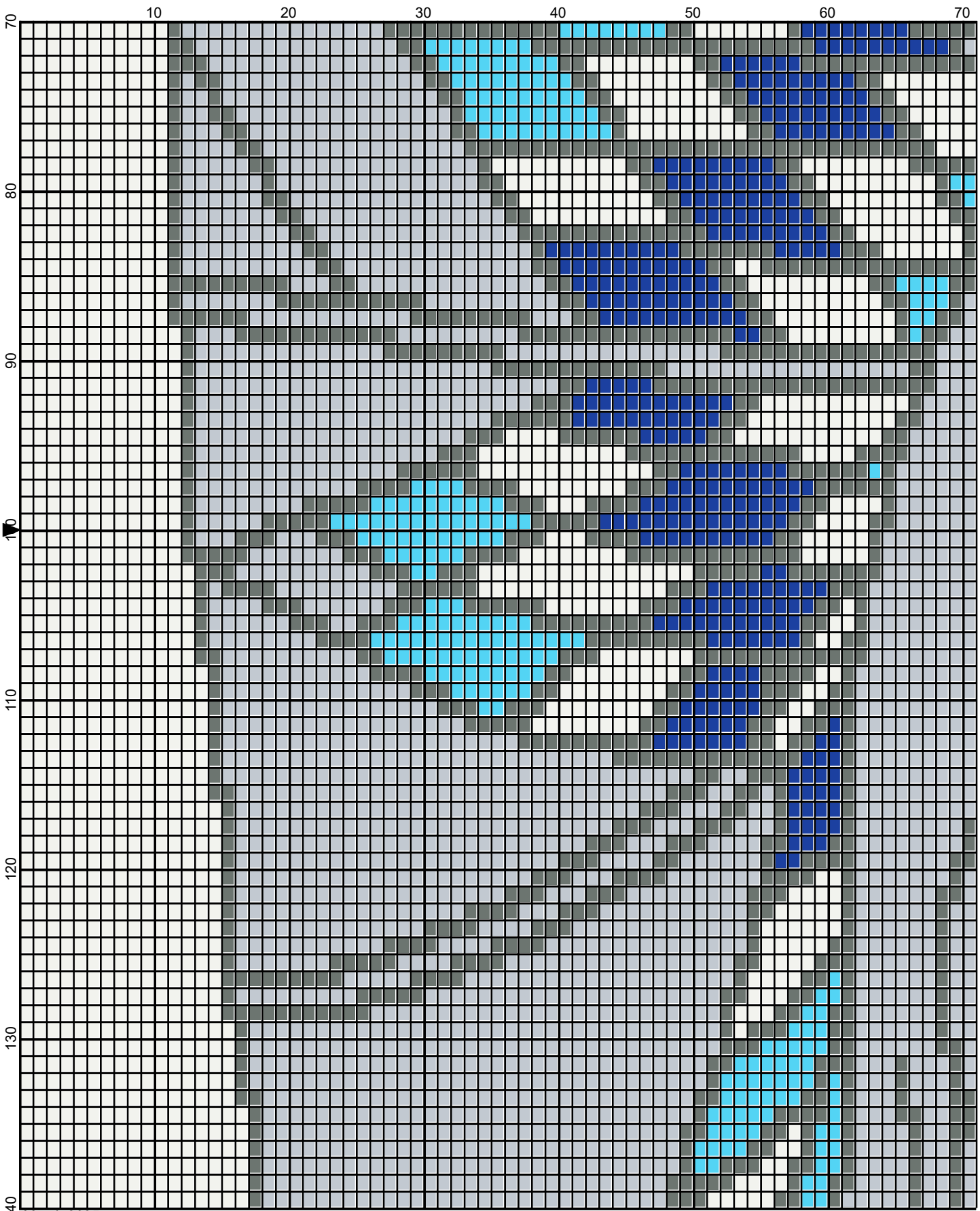
March 2025



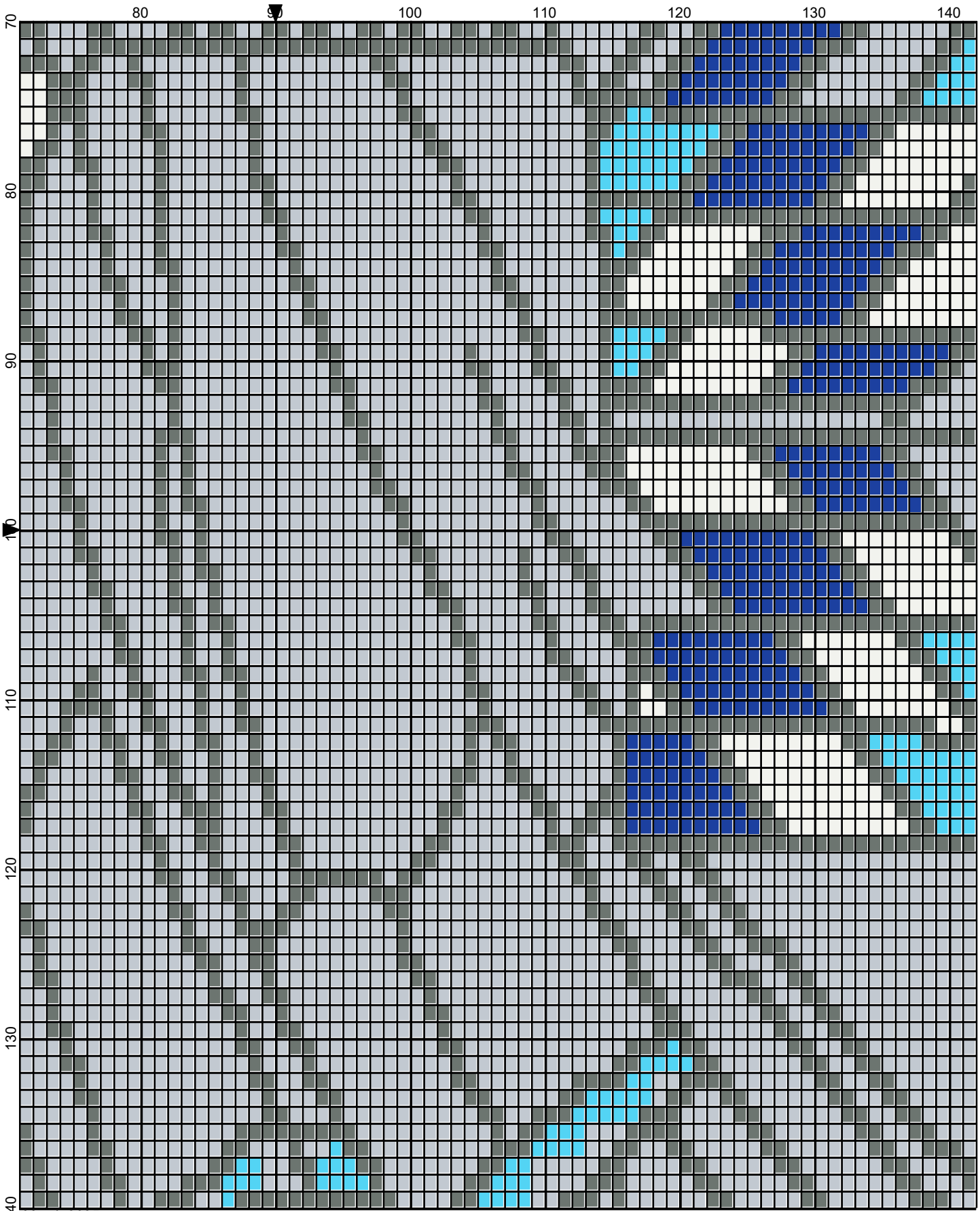
March 2025



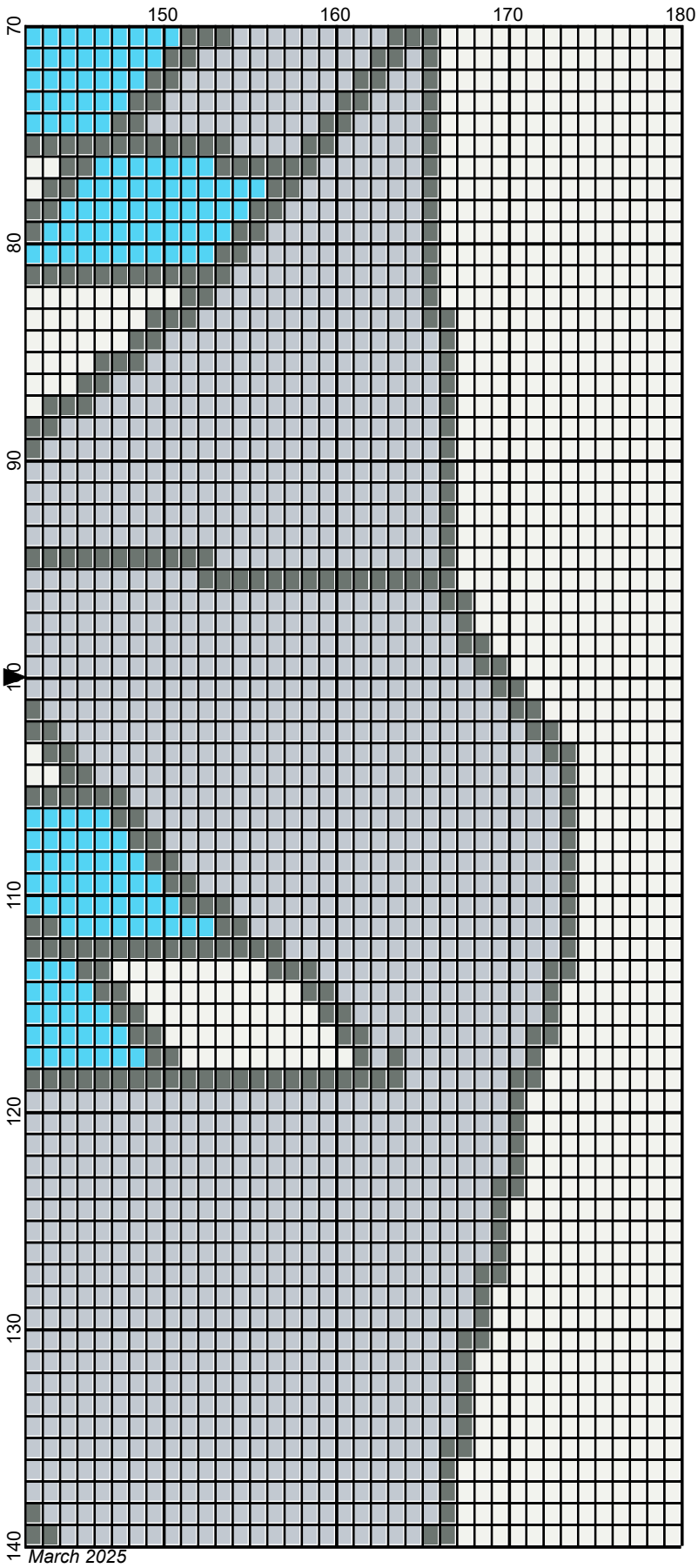
March 2025



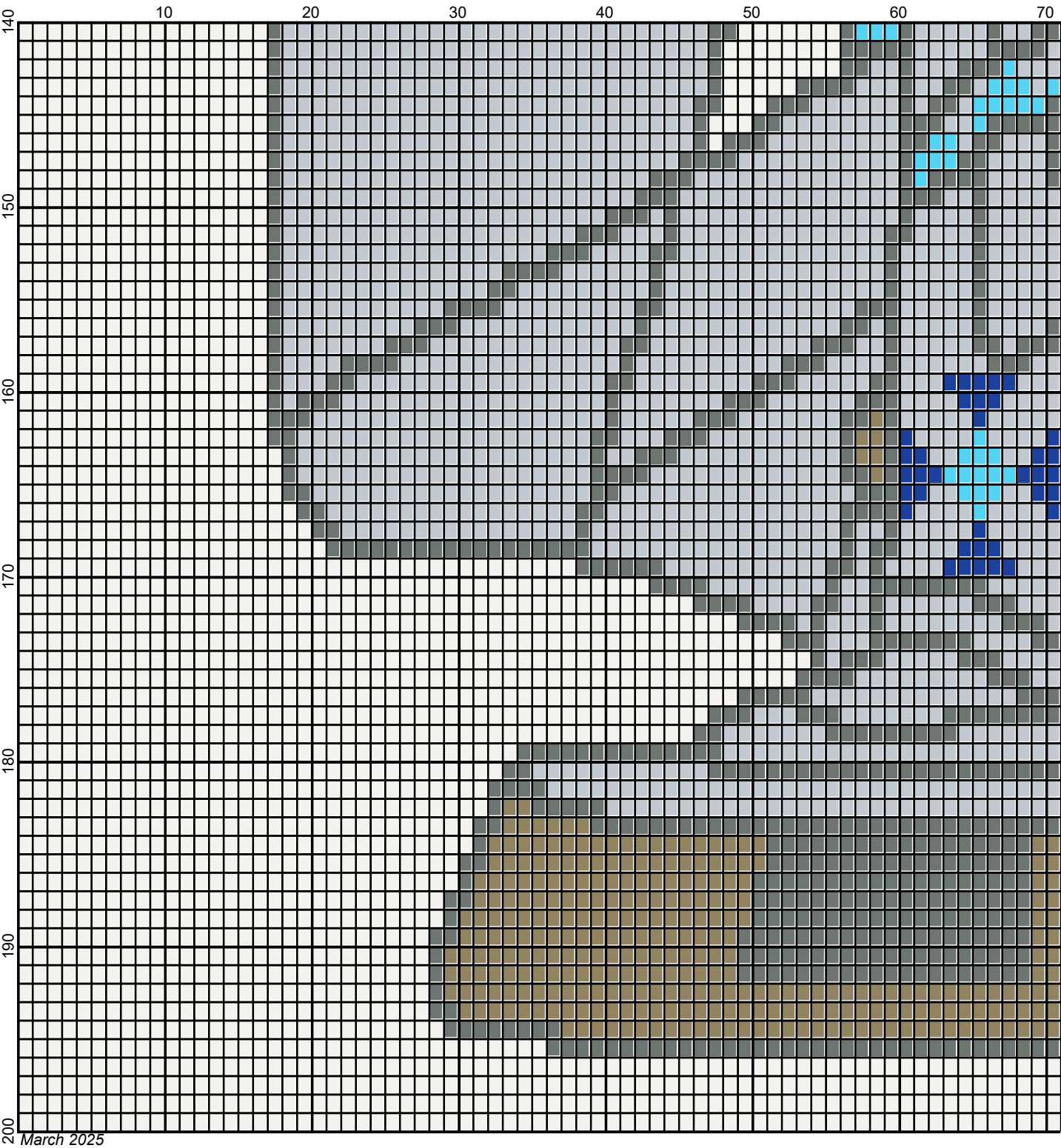
March 2025



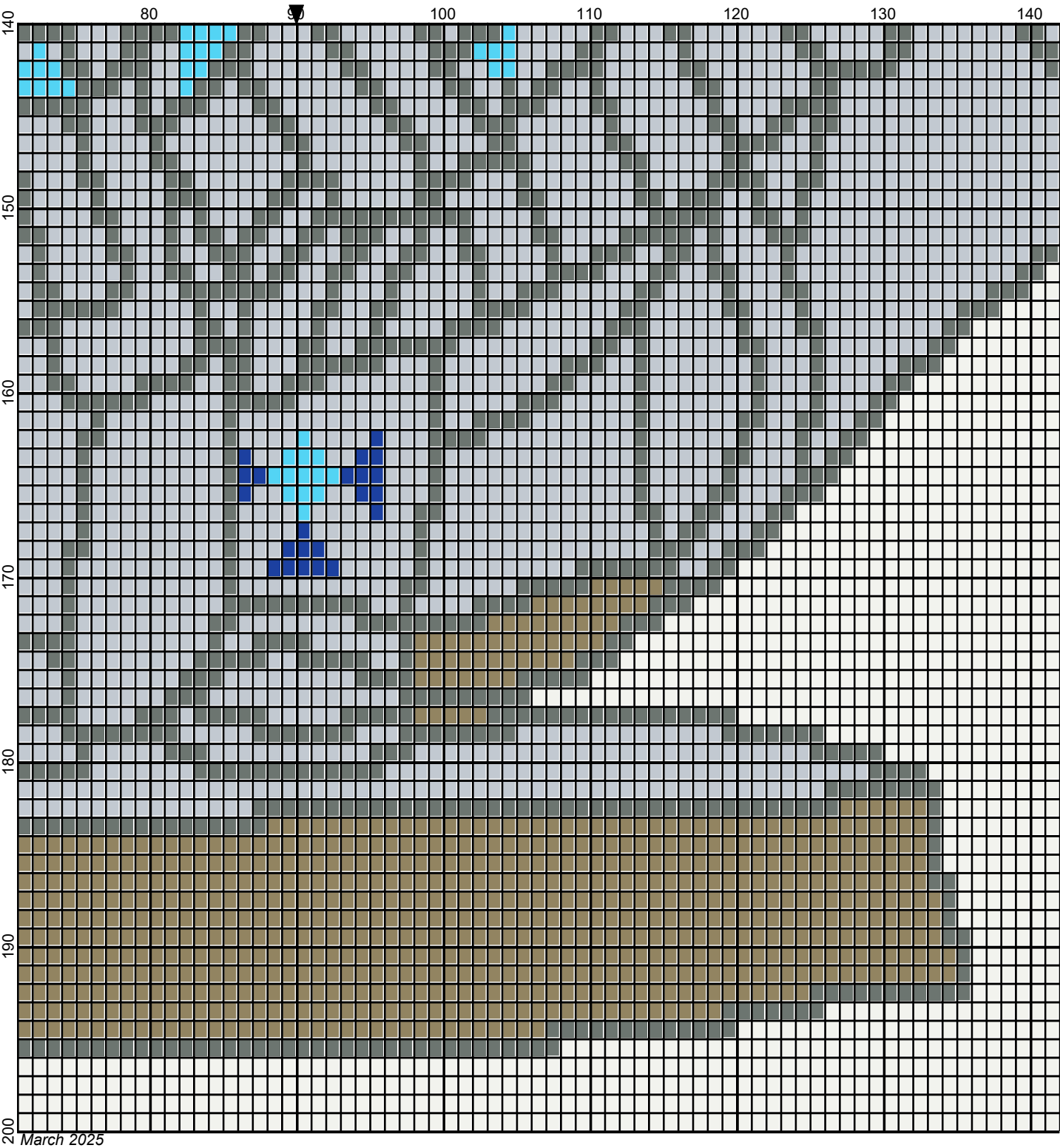
March 2025



March 2025



Legend:



RHS-886 RHS-360 RHS-RH400 RHS-341 RHS-316 RHS-512

