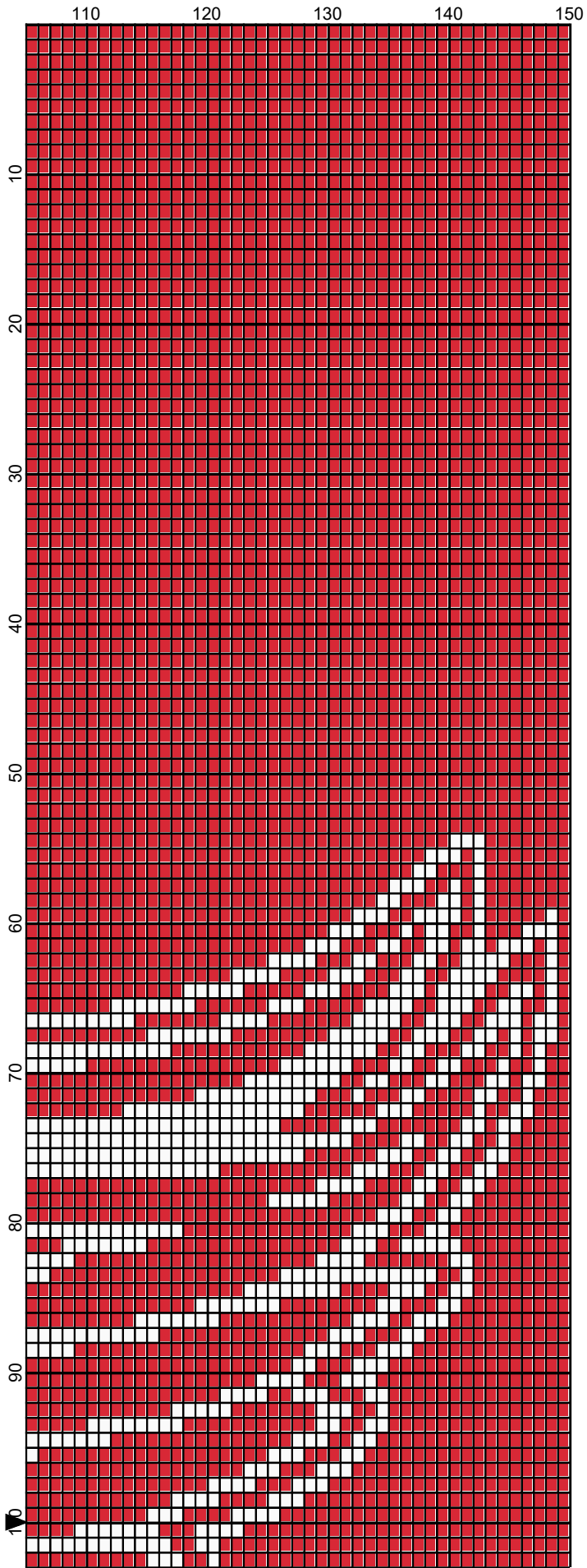
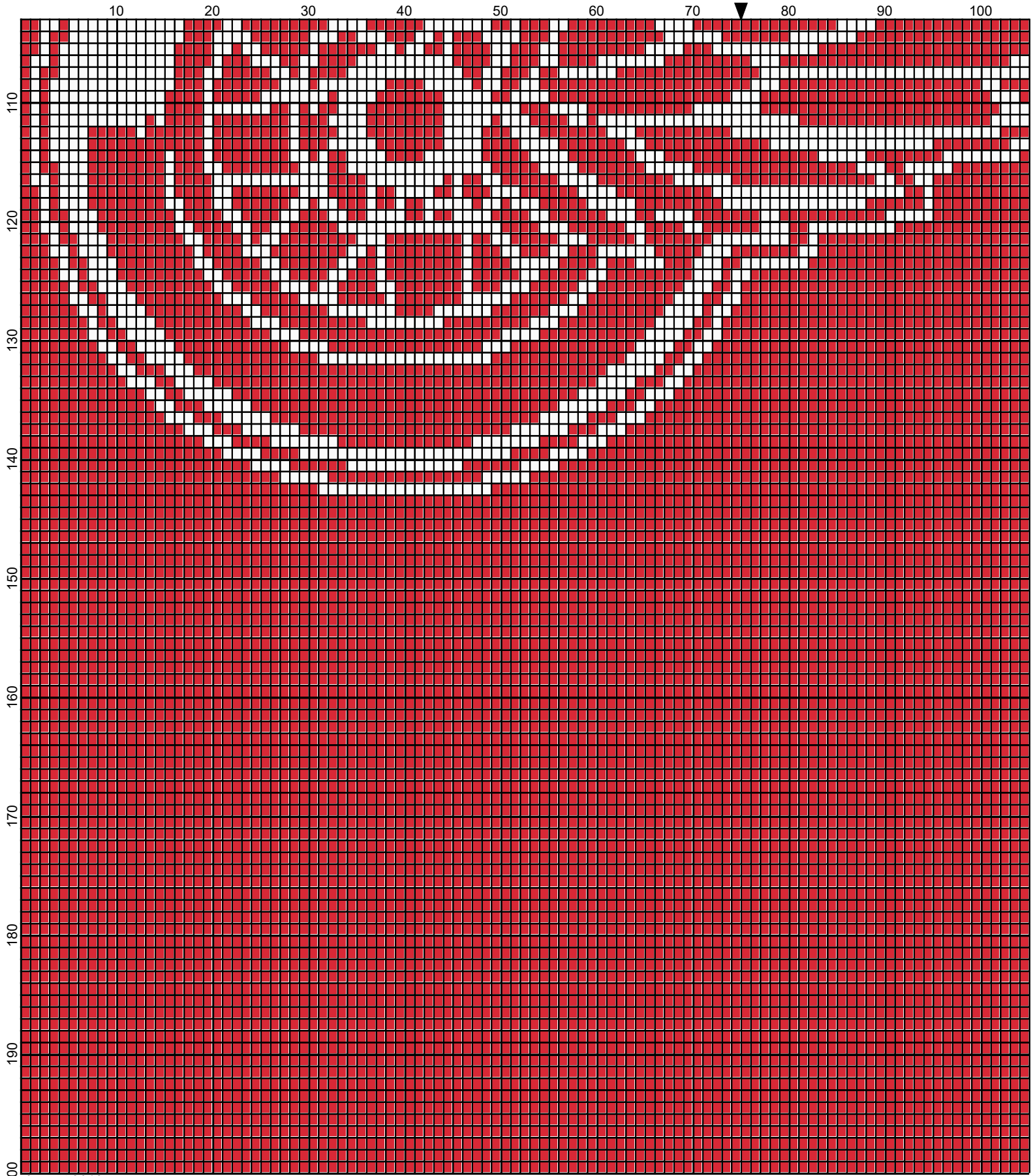


August 2016

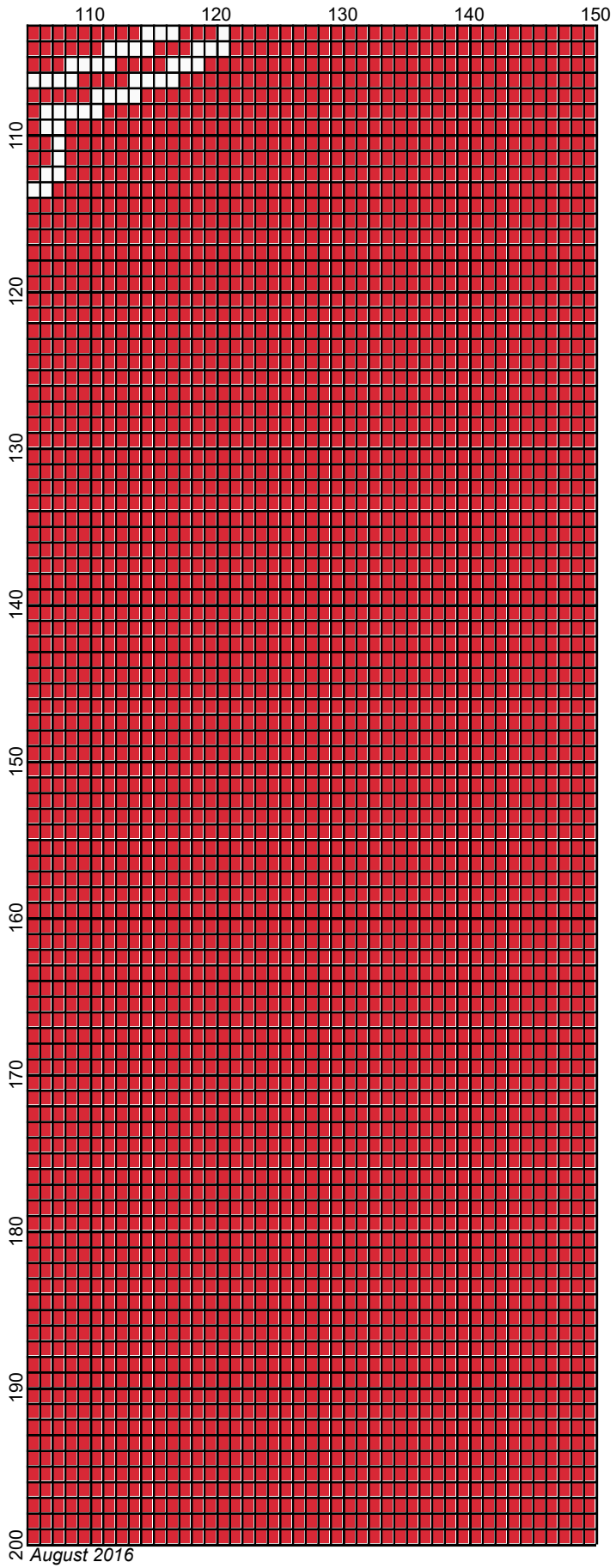


August 2016



200 August 2016

Detroit Red Wings 150 x200 by Donna Hammell



August 2016

# Detroit Red Wings 150 x200

---

**Author:** Donna Hammell  
**Copyright:** August 2016  
**Website:** www.donnascrochetshoppe.com  
**Grid Size:** 150W x 200H  
**Design Area:** 15.00" x 25.00" (150 x 200 stitches)

## Legend:

■ [2] 001 RH912 Cherry Red    □ [2] 001 rh001 White

Instructions for using the graph.

GAUGE= 5 STS = 1"  
4 ROWS = 1"

I USED SIZE "H" AFGHAN HOOK, USE WHATEVER SIZE GIVES YOU THE CORRECT GAUGE. CAN BE DONE IN AFGHAN STITCH OR SINGLE CROCHET.

EACH SQUARE ON THE GRAPH REPRESENTS 1 STITCH. FOR SINGLE CROCHET READ THE CHART FROM LEFT TO RIGHT. IF USING AFGHAN STITCH ALWAYS READ FROM THE RIGHT.

TO START: CHAIN ONE MORE STITCH THAN GRAPH.

ESTIMATED YARN NEEDED:

RED: 5 OUNCES

WHITE: 36 OUNCES