

10

20

30

40



60

10

20

30

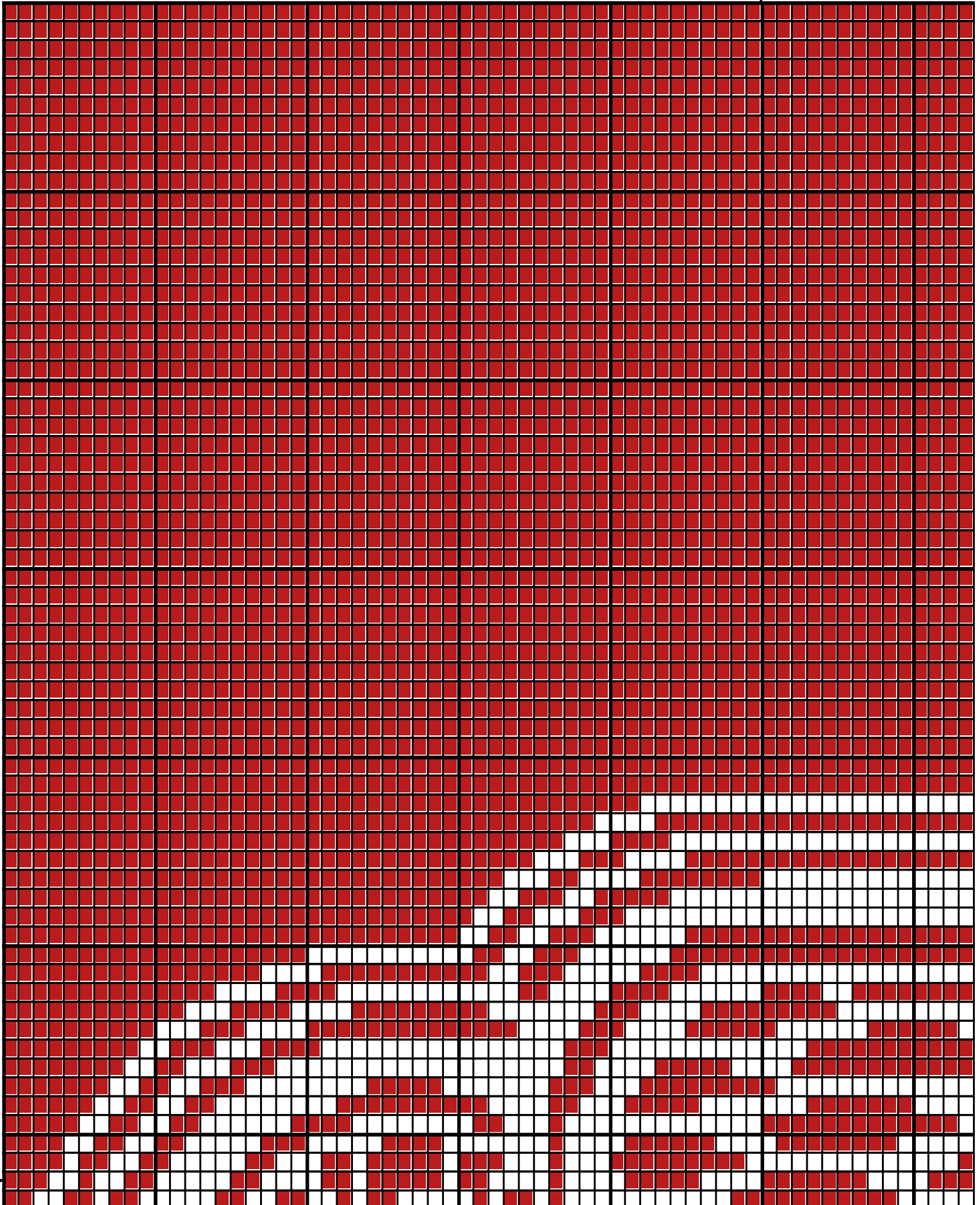
40

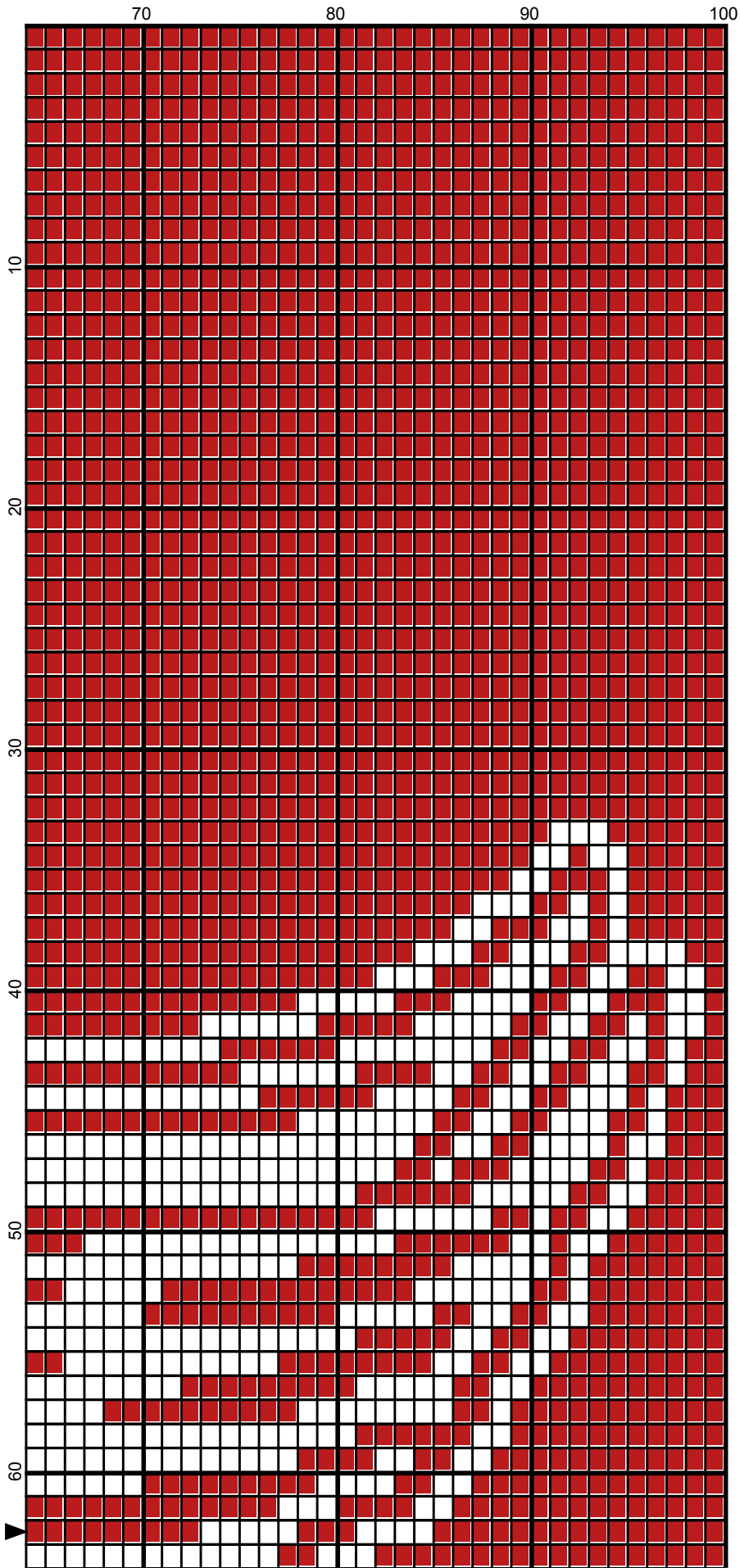
50

60

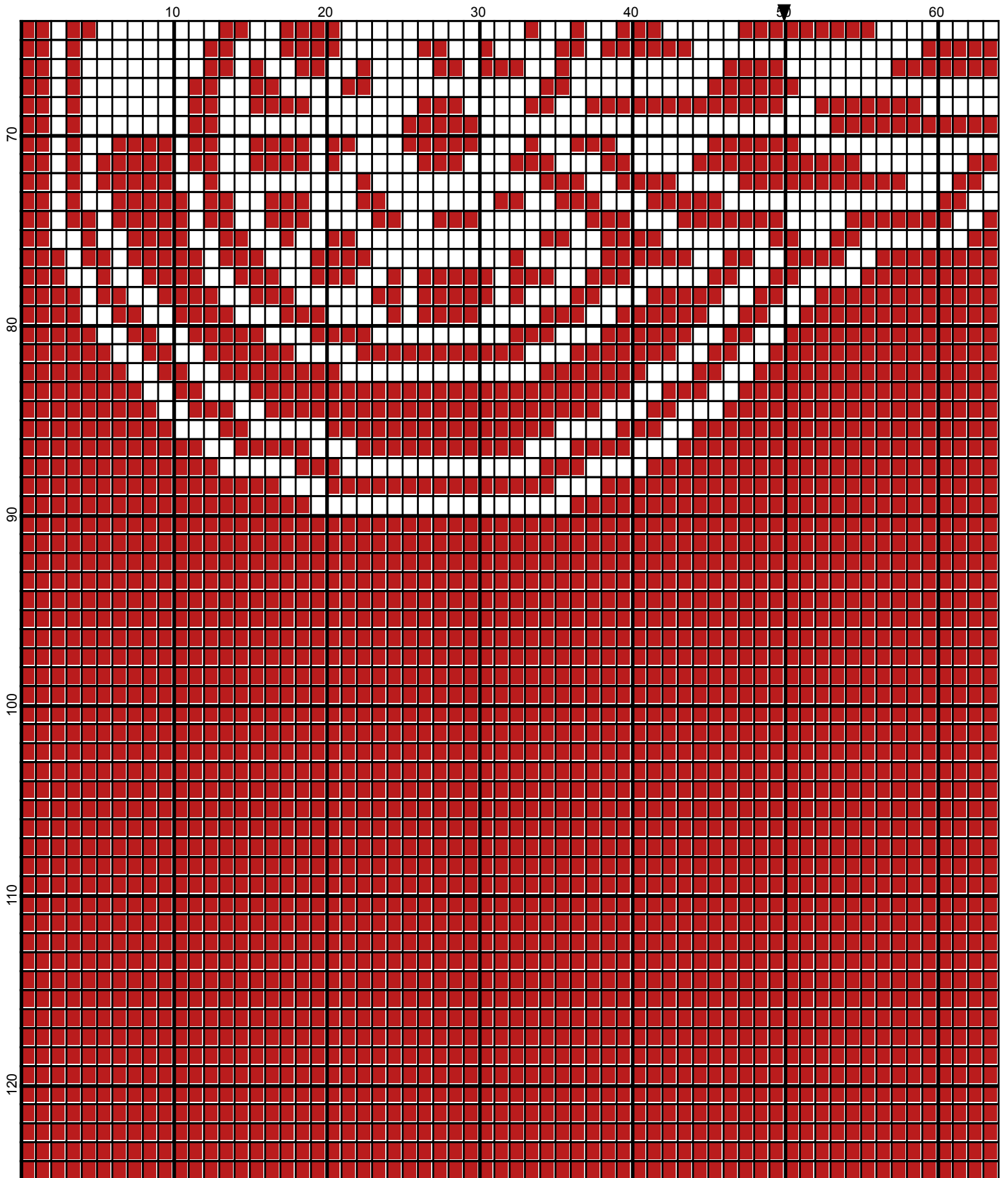


October 2015

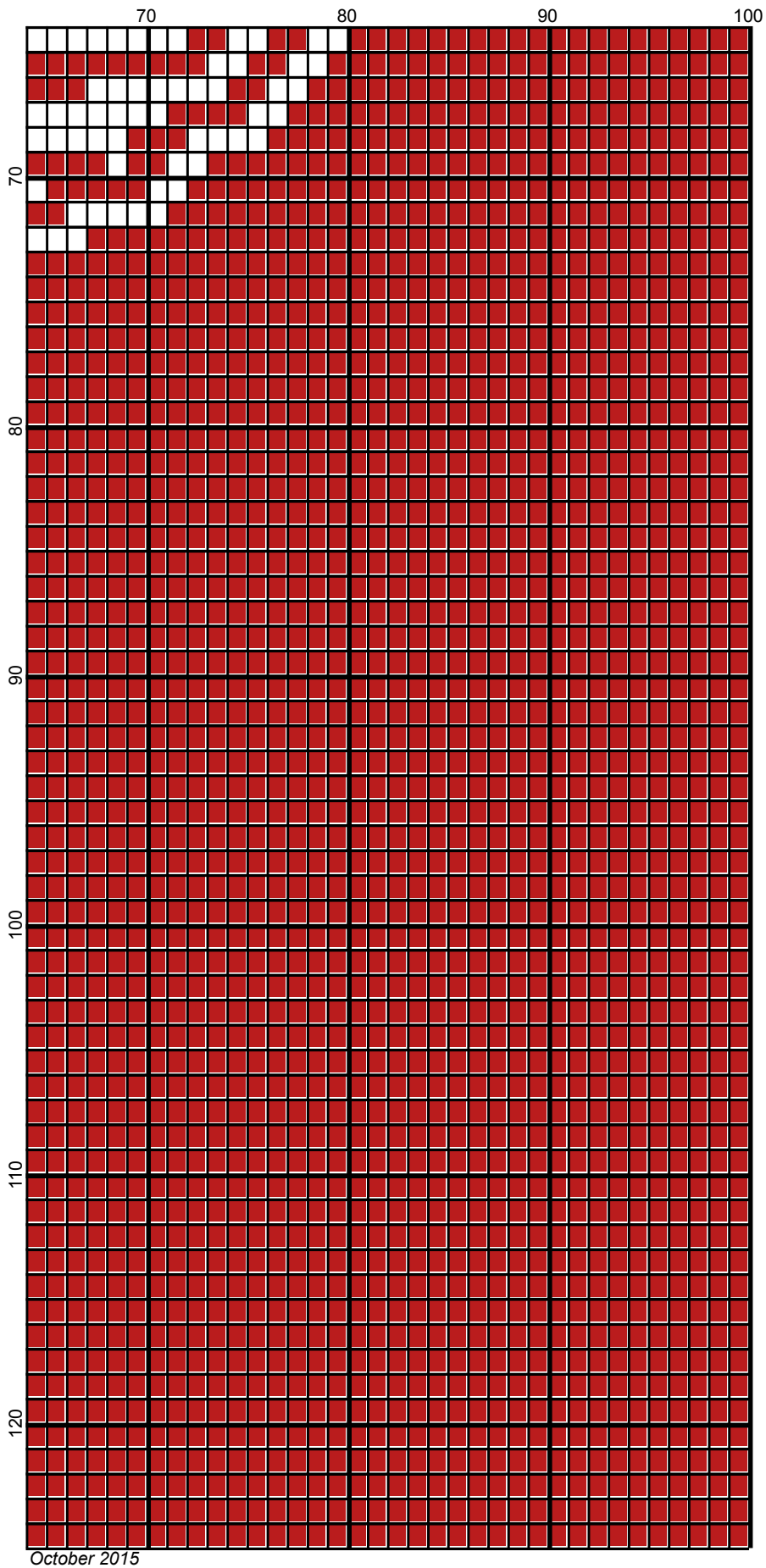




October 2015



October 2015



October 2015

# detroit\_redwings\_100x125

---

**Author:** Donna Hammell  
**Copyright:** October 2015  
**Website:** www.donnascrochetshoppe.com  
**Grid Size:** 100W x 125H  
**Design Area:** 10.00" x 15.63" (100 x 125 stitches)

**Legend:**  
■ [2] RHC 902 Jockey Red      □ [2] RHC 001 White

Instructions for using the graph.

GAUGE= 5 STS = 1"  
4 ROWS = 1"

I USED SIZE "H" AFGHAN HOOK,USE WHATEVER SIZE GIVES YOU THE CORRECT GAUGE. CAN BE DONE IN AFGHAN STITCH OR SINGLE CROCHET.

EACH SQUARE ON THE GRAPH REPRESENTS 1 STITCH. FOR SINGLE CROCHET READ THE CHART FROM RIGHT TO LEFT, AND THEN LEFT TO RIGHT. IF USING AFGHAN STITCH ALWAYS READ FROM THE RIGHT.

TO START: CHAIN ONE MORE STITCH THAN GRAPH.

ESTIMATED YARN NEEDED;  
WHITE: 2 OUNCES  
RED:14 OUNCES