

10

20

30

40

50

60

70

80

10

20

30

40

50

60

70

80

February 2008

90

100

110

120

130

140

150

160

10

20

30

40

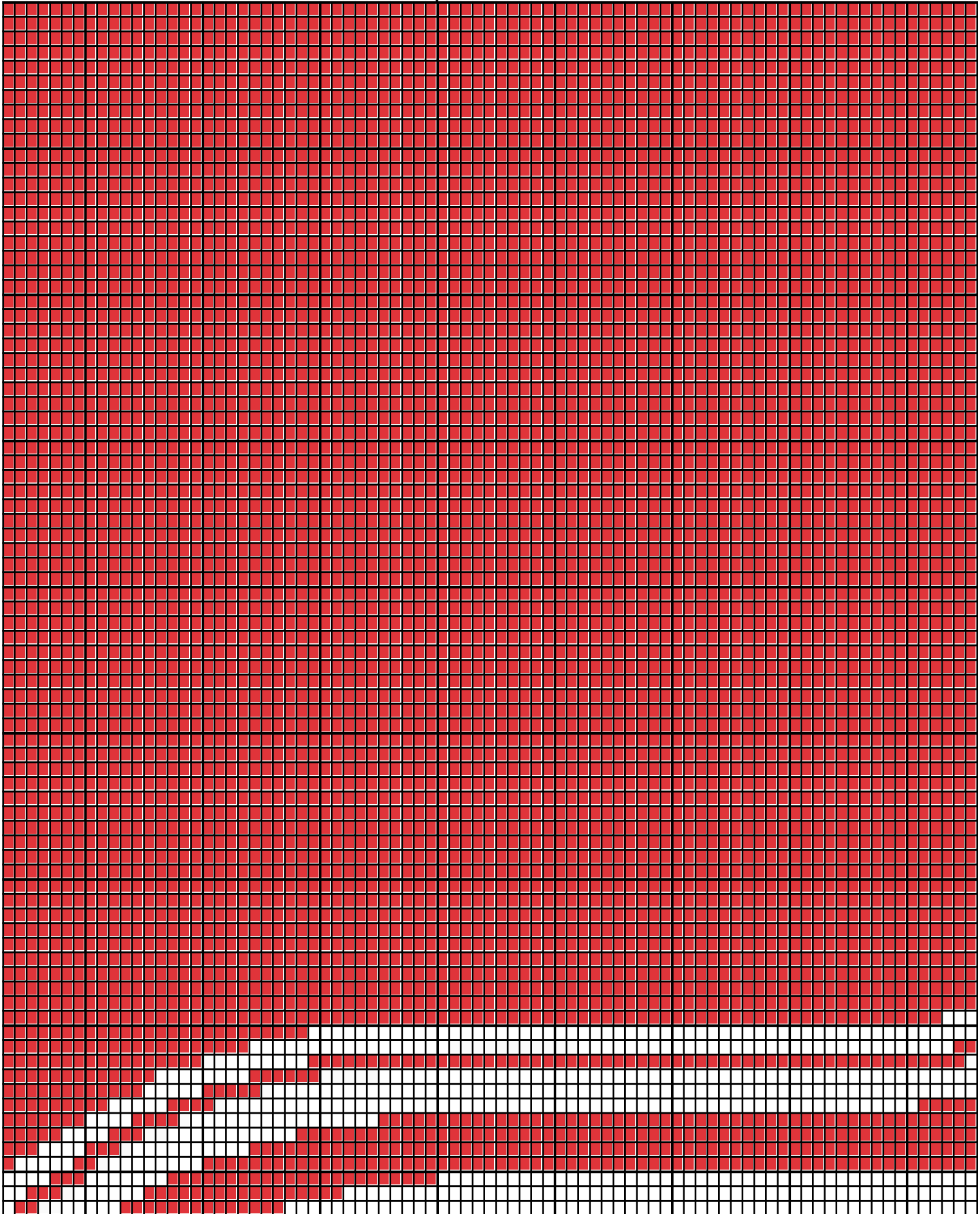
50

60

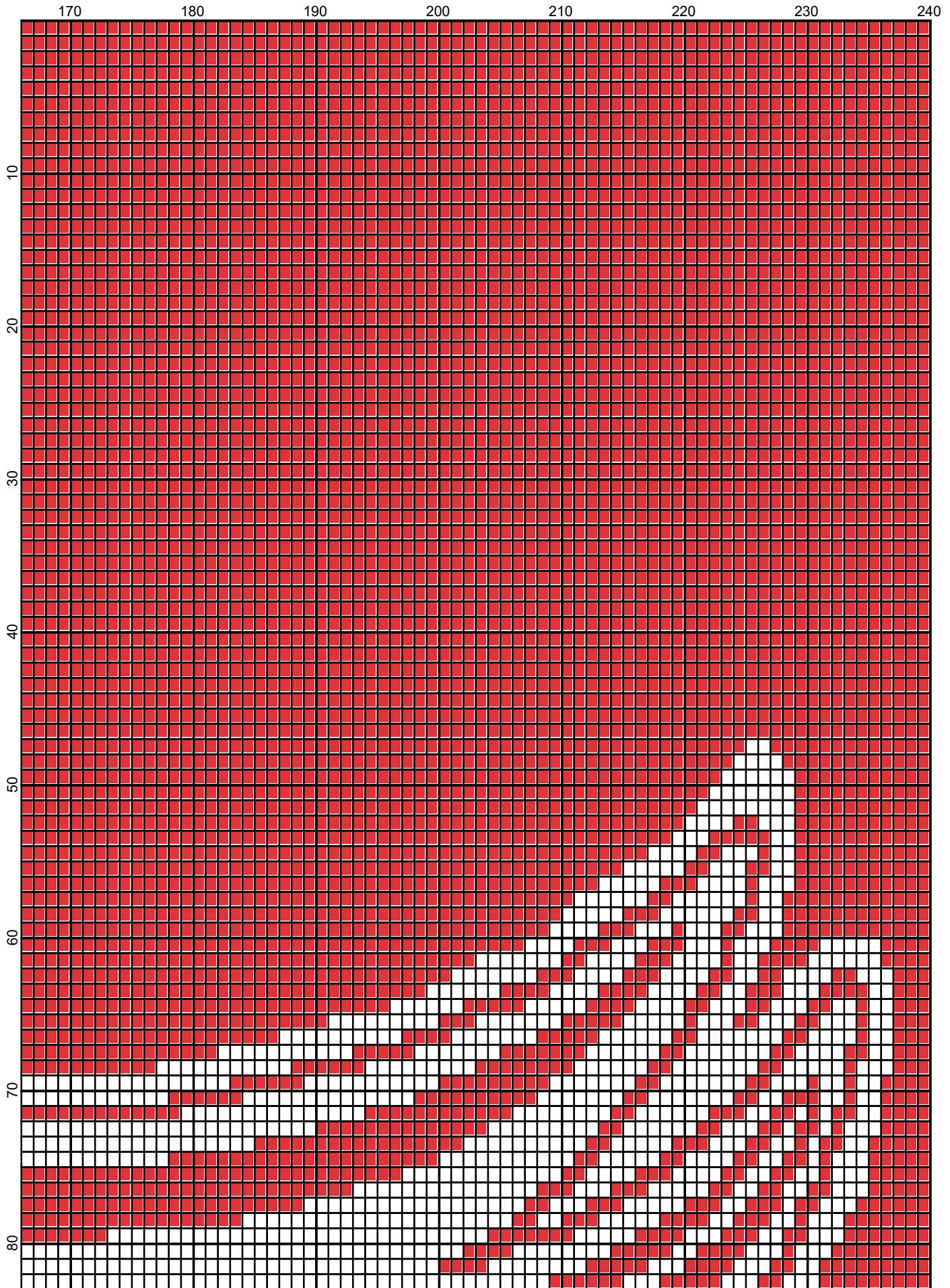
70

80

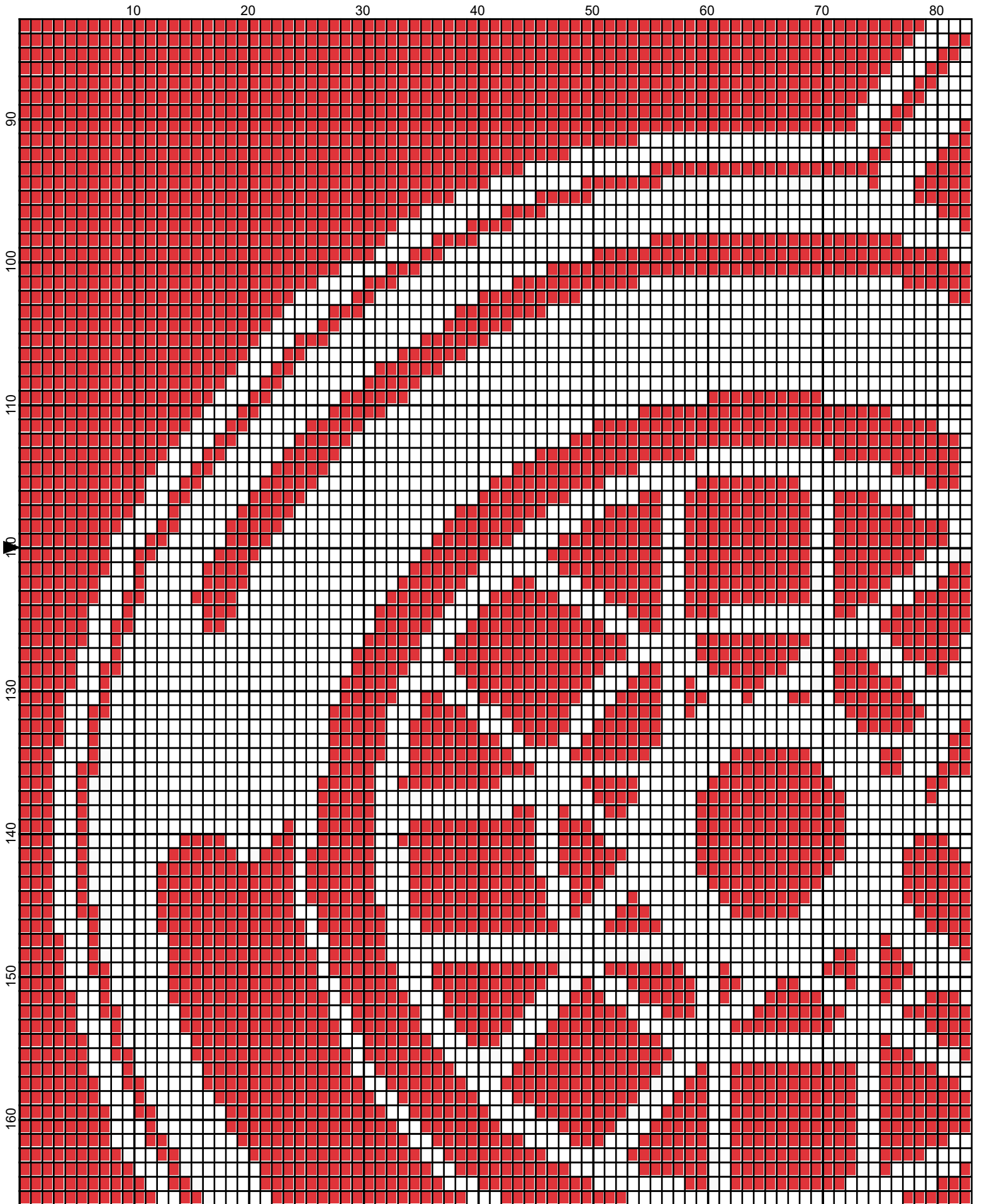
February 2008



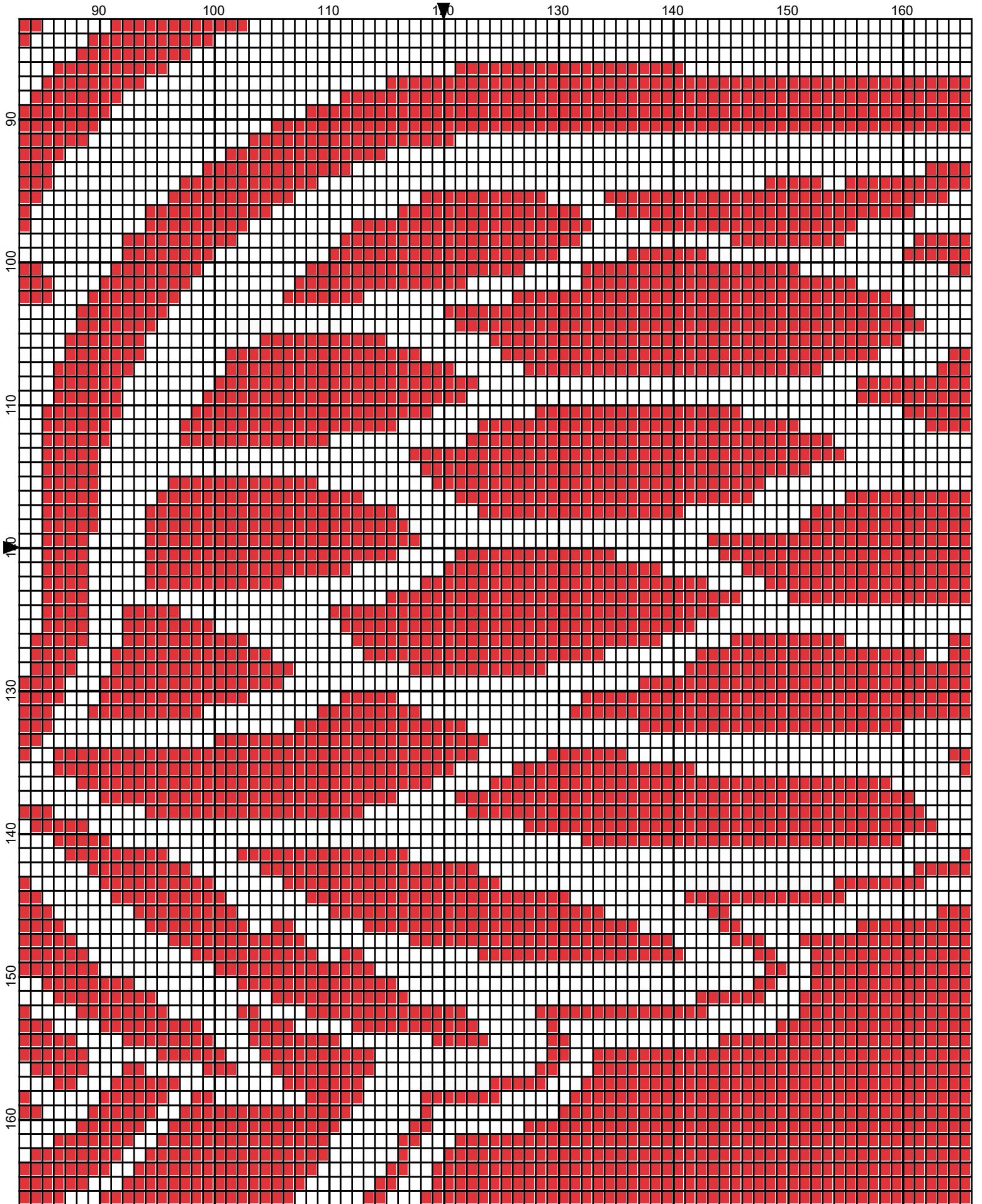
Detroit Red Wings by Donna Hammell



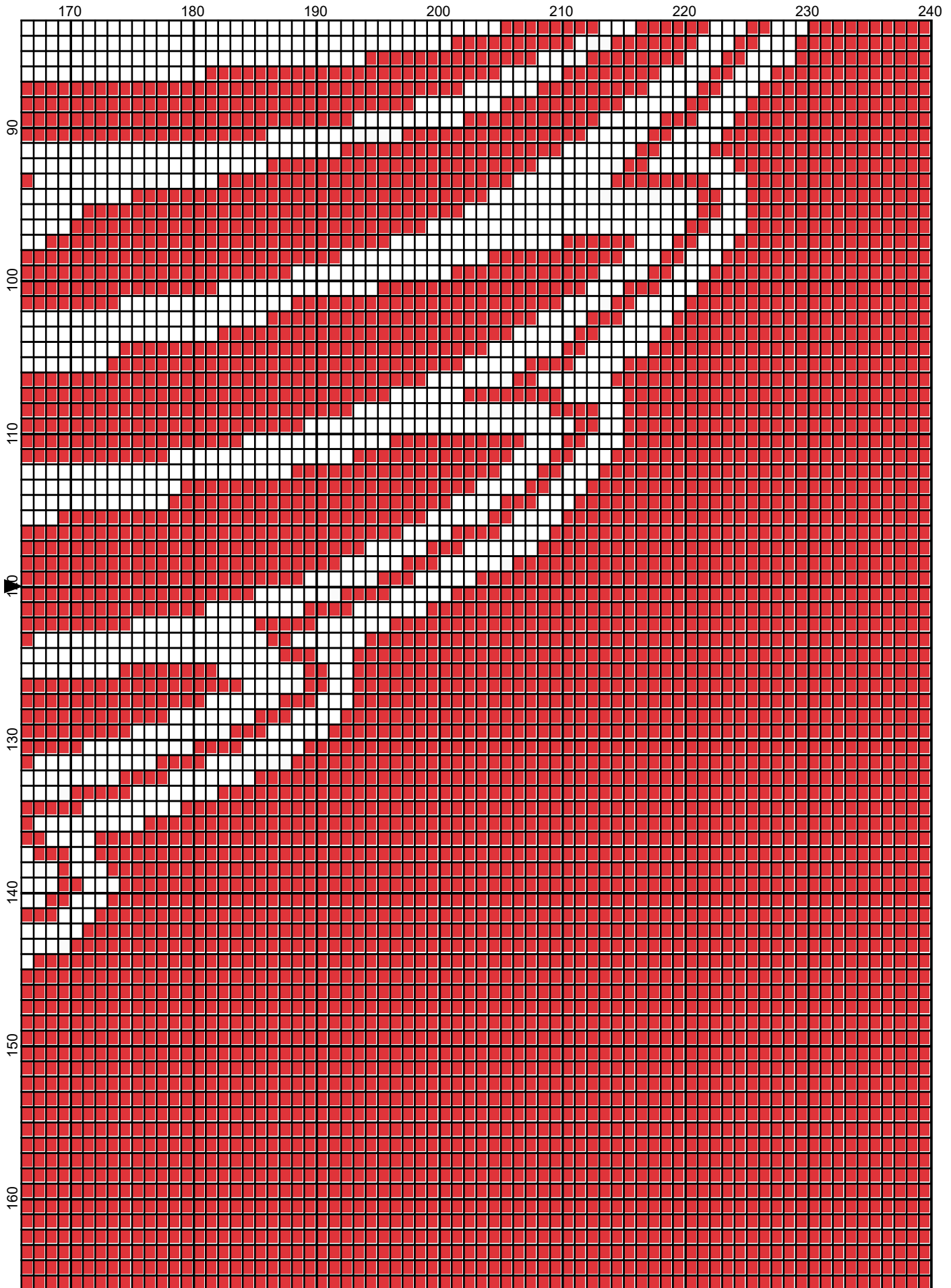
February 2008



February 2008

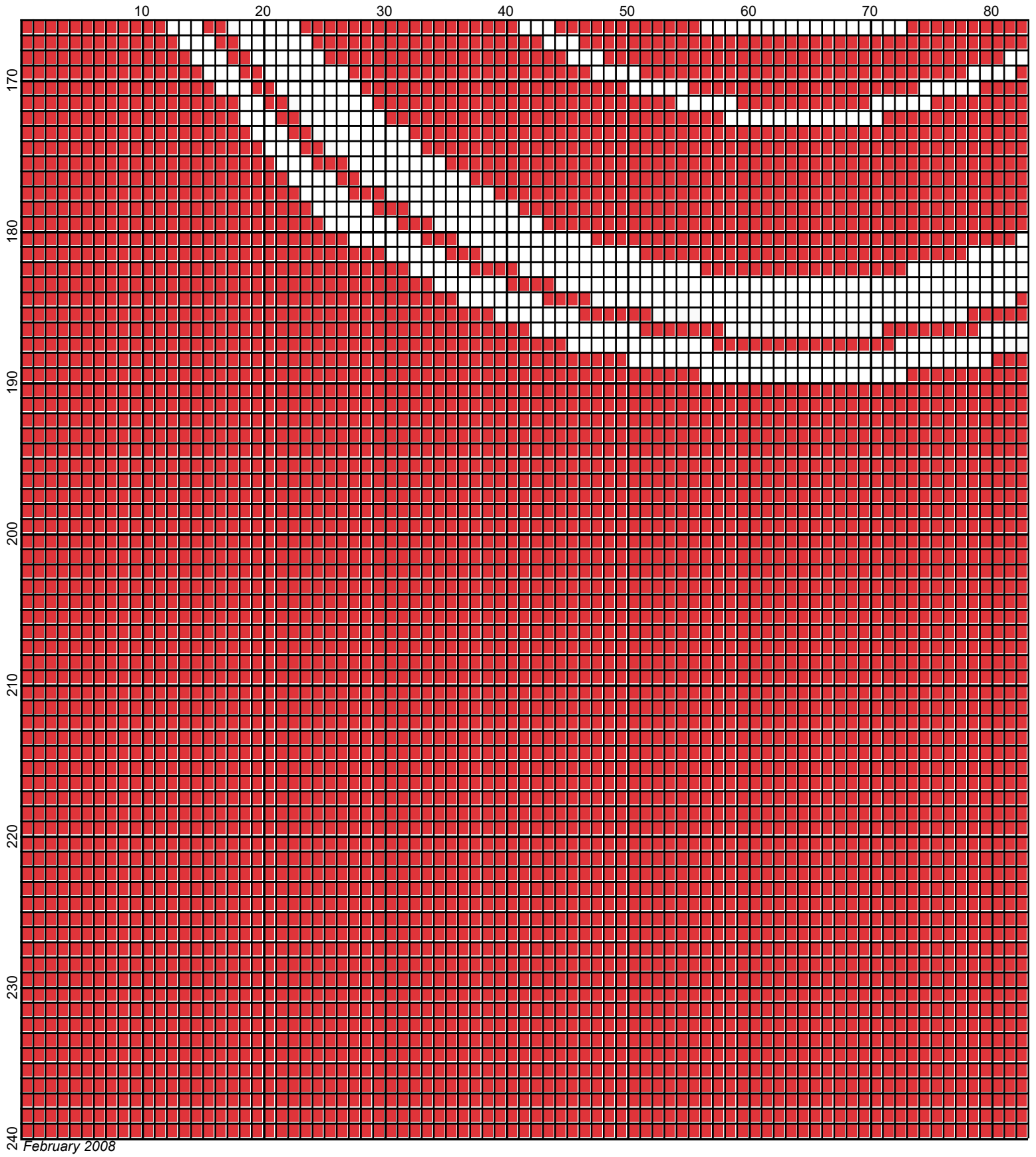


Detroit Red Wings by Donna Hammell

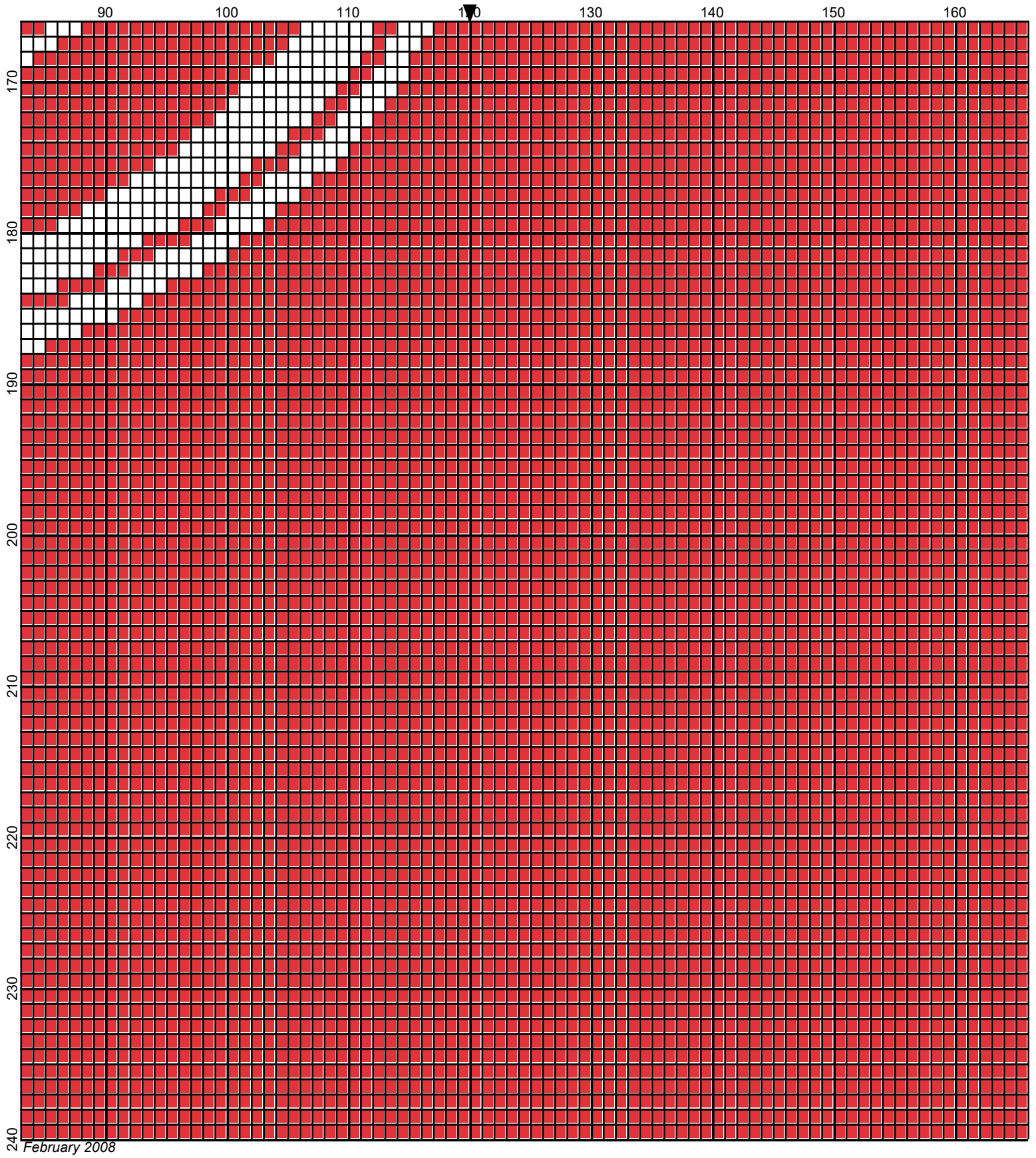


February 2008

Detroit Red Wings by Donna Hammell

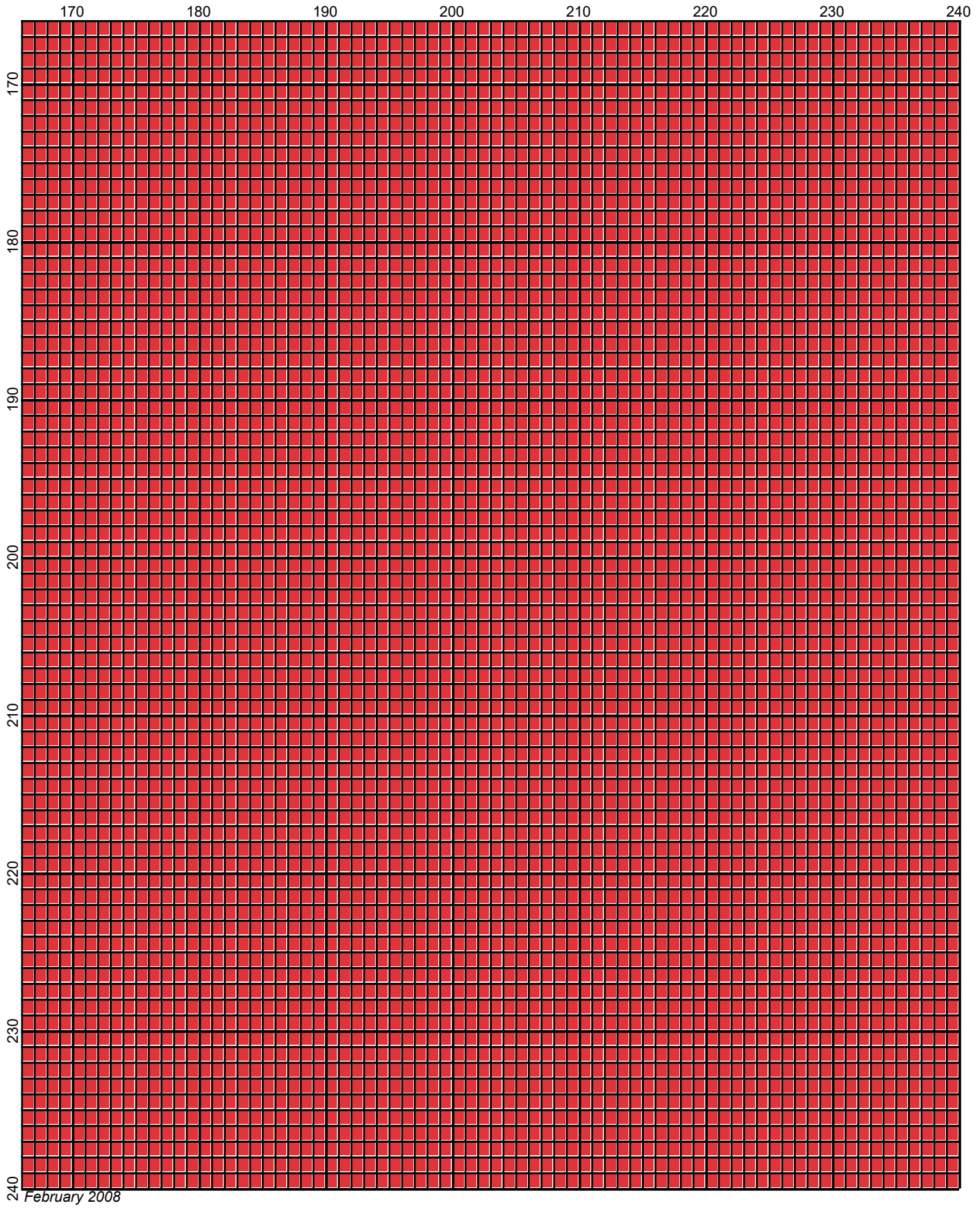


Detroit Red Wings by Donna Hammell



February 2008

Detroit Red Wings by Donna Hammell



Detroit Red Wings

Author: Donna Hammell
Copyright: February 2008
Website: www.geocities.com/crochetshoppe/patterns.html
Grid Size: 240W x 240H
Design Area: 24.00" x 30.00" (240 x 240 stitches)

Legend:
□ [2] 001 rh001 White ■ [2] 001 RH902 Jockey Red

Instructions for using the graph.

GAUGE= 5 STS = 1"
4 ROWS = 1"

I USED SIZE "H" AFGHAN HOOK, USE WHATEVER SIZE GIVES YOU THE CORRECT GAUGE. CAN BE DONE IN AFGHAN STITCH OR SINGLE CROCHET.

EACH SQUARE ON THE GRAPH REPRESENTS 1 STITCH. FOR SINGLE CROCHET READ THE CHART FROM LEFT TO RIGHT. IF USING AFGHAN STITCH ALWAYS READ FROM THE RIGHT.

TO START: CHAIN ONE MORE STITCH THAN GRAPH.

YOU WILL NEED TO ADD STITCHES TO MAKE THE PIECE WIDER, AND ADD ROWS TO MAKE IT LONGER. THE DESIGN IS CENTERED, SO ADD STITCHES EVENLY TO BOTH SIDES.

ESTIMATED YARN NEEDED:

RED: 50 OUNCES

WHITE: 3 OUNCES