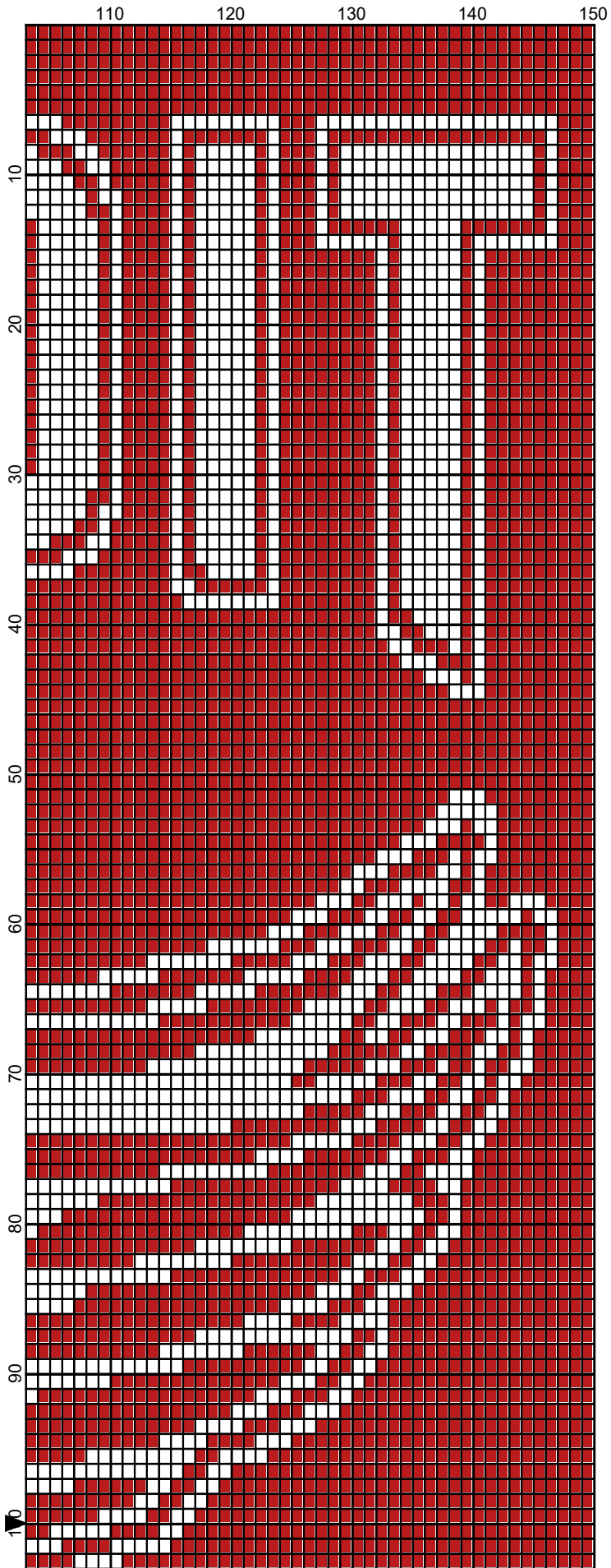


10 20 30 40 50 60 70 80 90 100

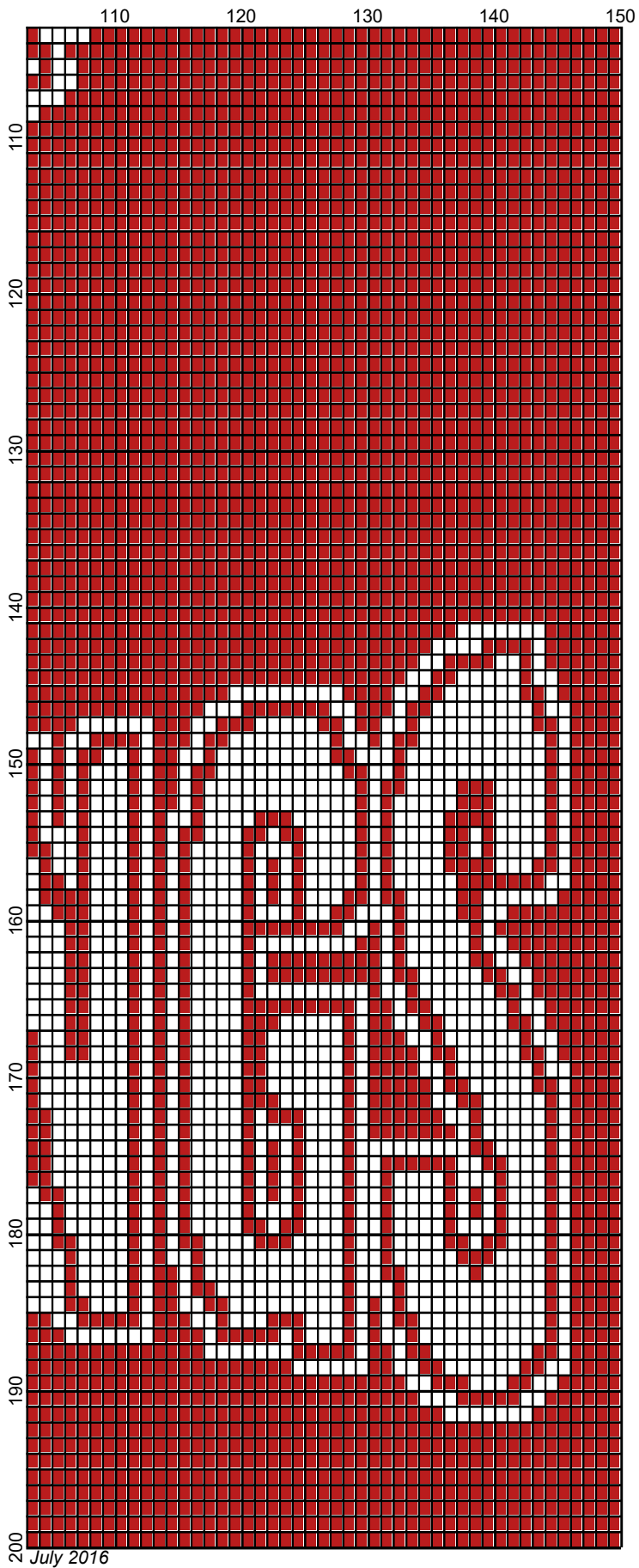


July 2016



July 2016





detroit_red_wings_150x200

Author: Donna Hammell
Copyright: July 2016
Website: www.donnascrochetshoppe.com
Grid Size: 150W x 200H
Design Area: 15.00" x 25.00" (150 x 200 stitches)

Legend:
■ [2] RHC 902 Jockey Red □ [2] RHC 001 White

Instructions for using the graph.

GAUGE= 5 STS = 1"
4 ROWS = 1"

I USED SIZE "H" AFGHAN HOOK, USE WHATEVER SIZE GIVES YOU THE CORRECT GAUGE. CAN BE DONE IN AFGHAN STITCH OR SINGLE CROCHET.

EACH SQUARE ON THE GRAPH REPRESENTS 1 STITCH. FOR SINGLE CROCHET READ THE CHART FROM LEFT TO RIGHT. IF USING AFGHAN STITCH ALWAYS READ FROM THE RIGHT.

TO START: CHAIN ONE MORE STITCH THAN GRAPH.

YOU WILL NEED TO ADD STITCHES TO MAKE THE PIECE WIDER, AND ADD ROWS TO MAKE IT LONGER. THE DESIGN IS CENTERED, SO ADD STITCHES EVENLY TO BOTH SIDES.

ESTIMATED YARN NEEDED:
RED: 28 OUNCES
WHITE: 14 OUNCES