

10

20

30

40

50

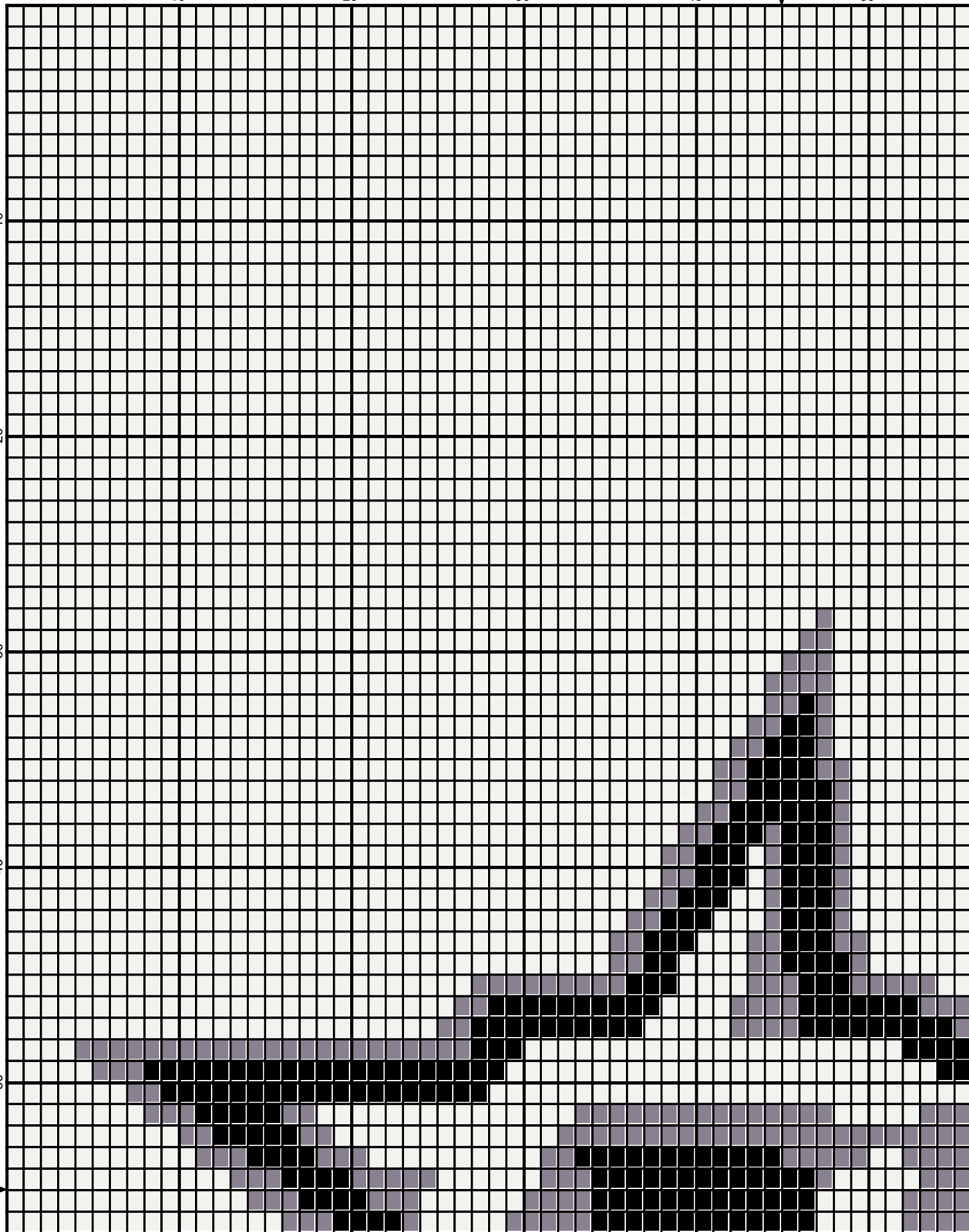
10

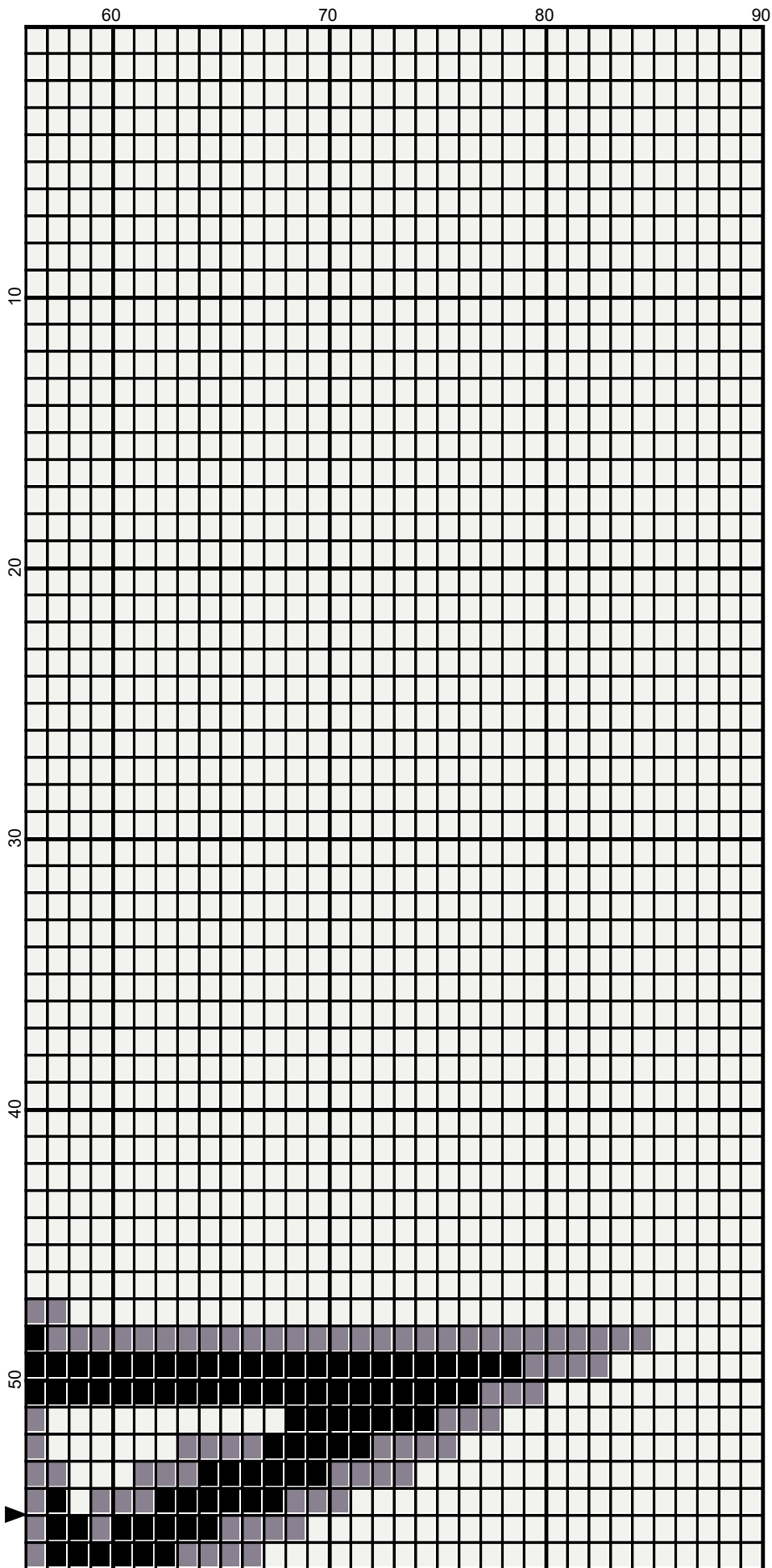
20

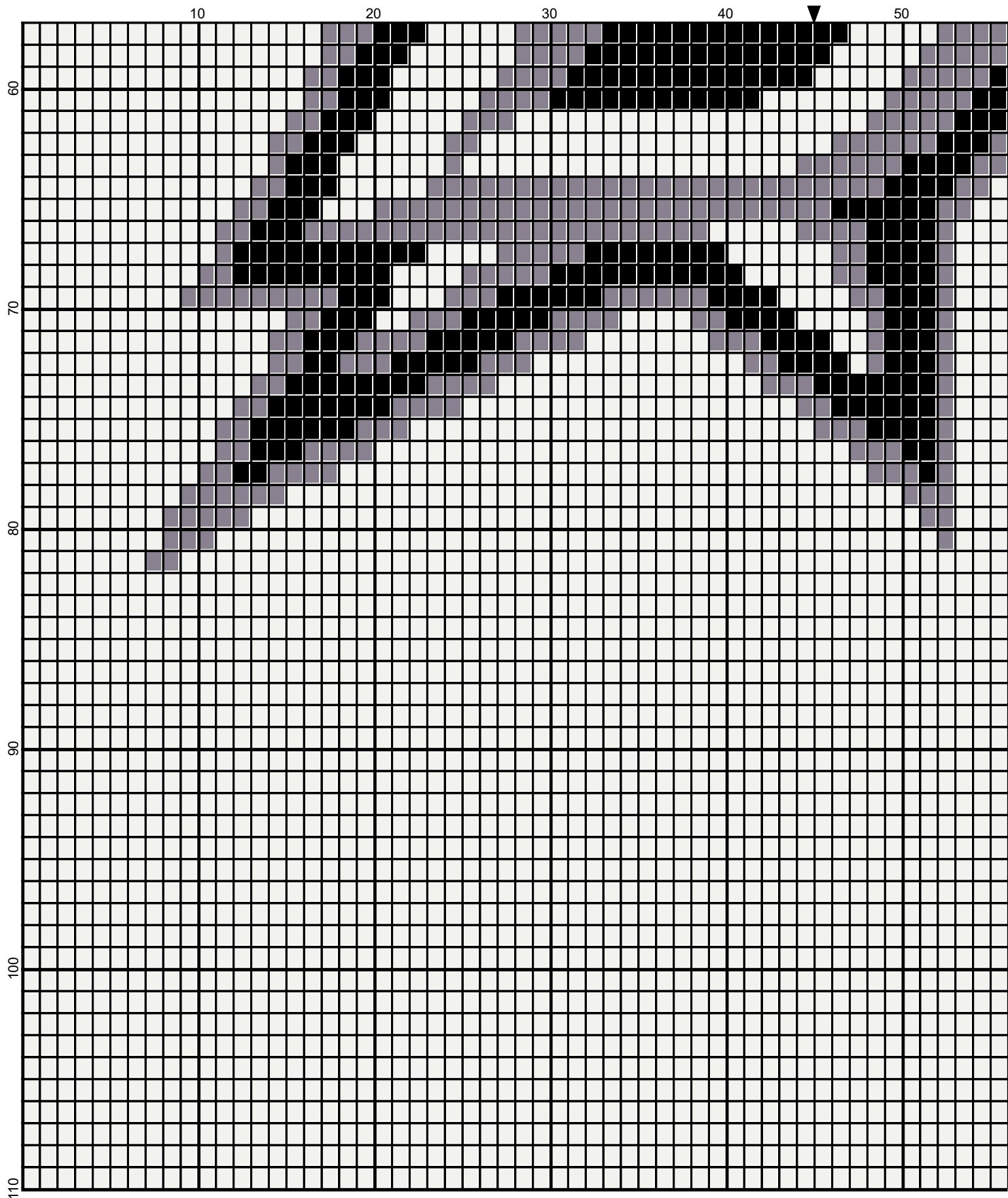
30

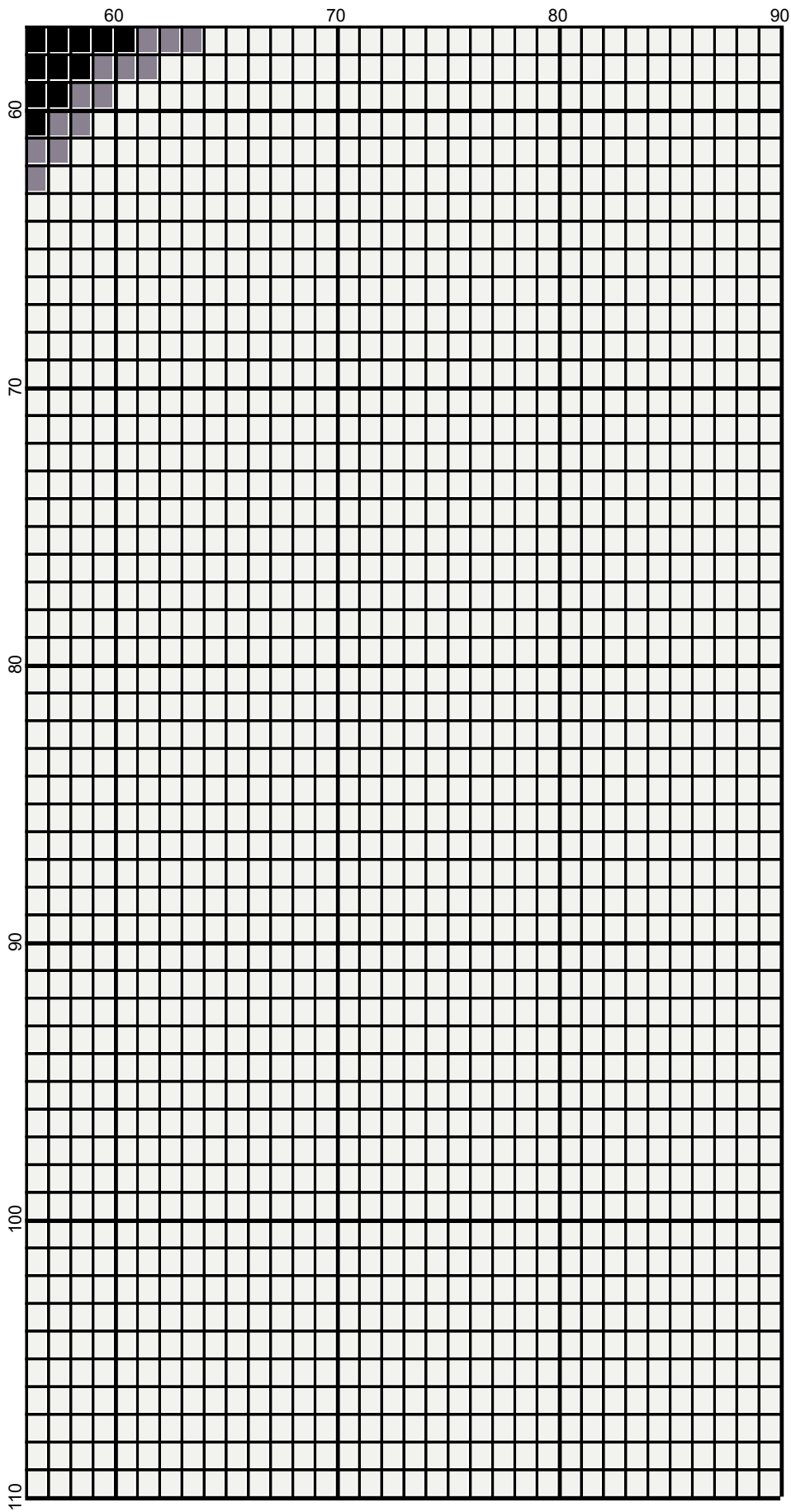
40

50









<No Title>

Author: Donna Hammell
Website: www.donnascrochetshoppe.com
Grid Size: 90W x 110H
Design Area: 9.00" x 13.75" (90 x 110 stitches)

Legend:

■ [2] RHS SSE Light Grey □ [2] RHS 316 Soft White ■ [2] RHS 312 Black

Instructions for using the graph.

GAUGE= 5 STS = 1"
4 ROWS = 1"

I USED SIZE "H" AFGHAN HOOK, USE WHATEVER SIZE GIVES YOU THE CORRECT GAUGE. CAN BE DONE IN AFGHAN STITCH OR SINGLE CROCHET.

EACH SQUARE ON THE GRAPH REPRESENTS 1 STITCH. FOR SINGLE CROCHET READ THE CHART FROM RIGHT TO LEFT, AND THEN LEFT TO RIGHT. IF USING AFGHAN STITCH ALWAYS READ FROM THE RIGHT.

TO START: CHAIN ONE MORE STITCH THAN GRAPH.

IF YOU NEED TO MAKE THE PIECE WIDER ADD AN EVEN NUMBER OF STITCHES TO BOTH SIDES, AND ADD ROWS TO MAKE IT LONGER. THE DESIGN IS CENTERED, SO ADD STITCHES EVENLY TO BOTH SIDES.

ESTIMATED RED SUPER SAVER YARN NEEDED:

WHITE: 1 OUNCE
BLACK: 1 OUNCE
LT GRAY: 1 OUNCE
GREEN: 12 OUNCES