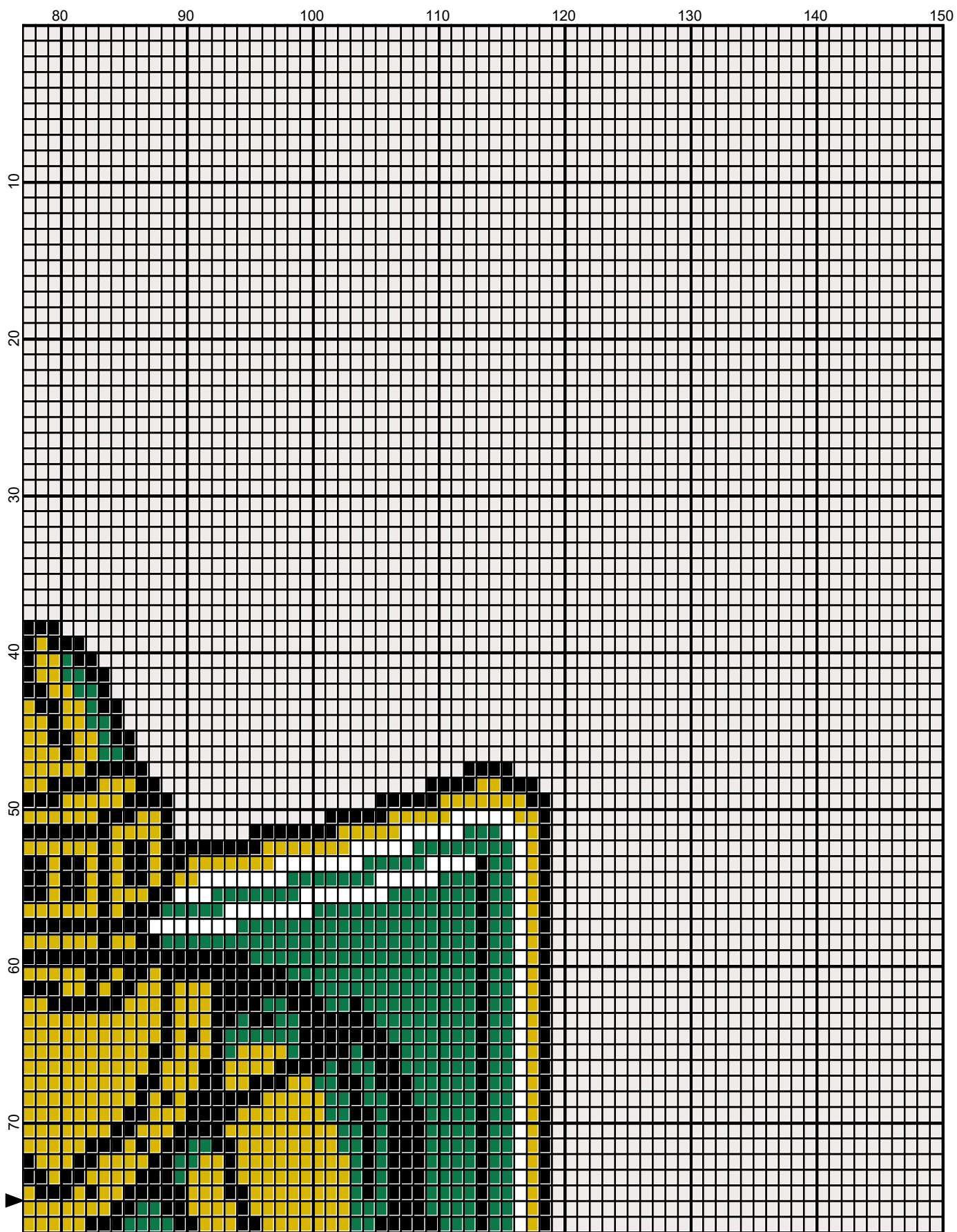
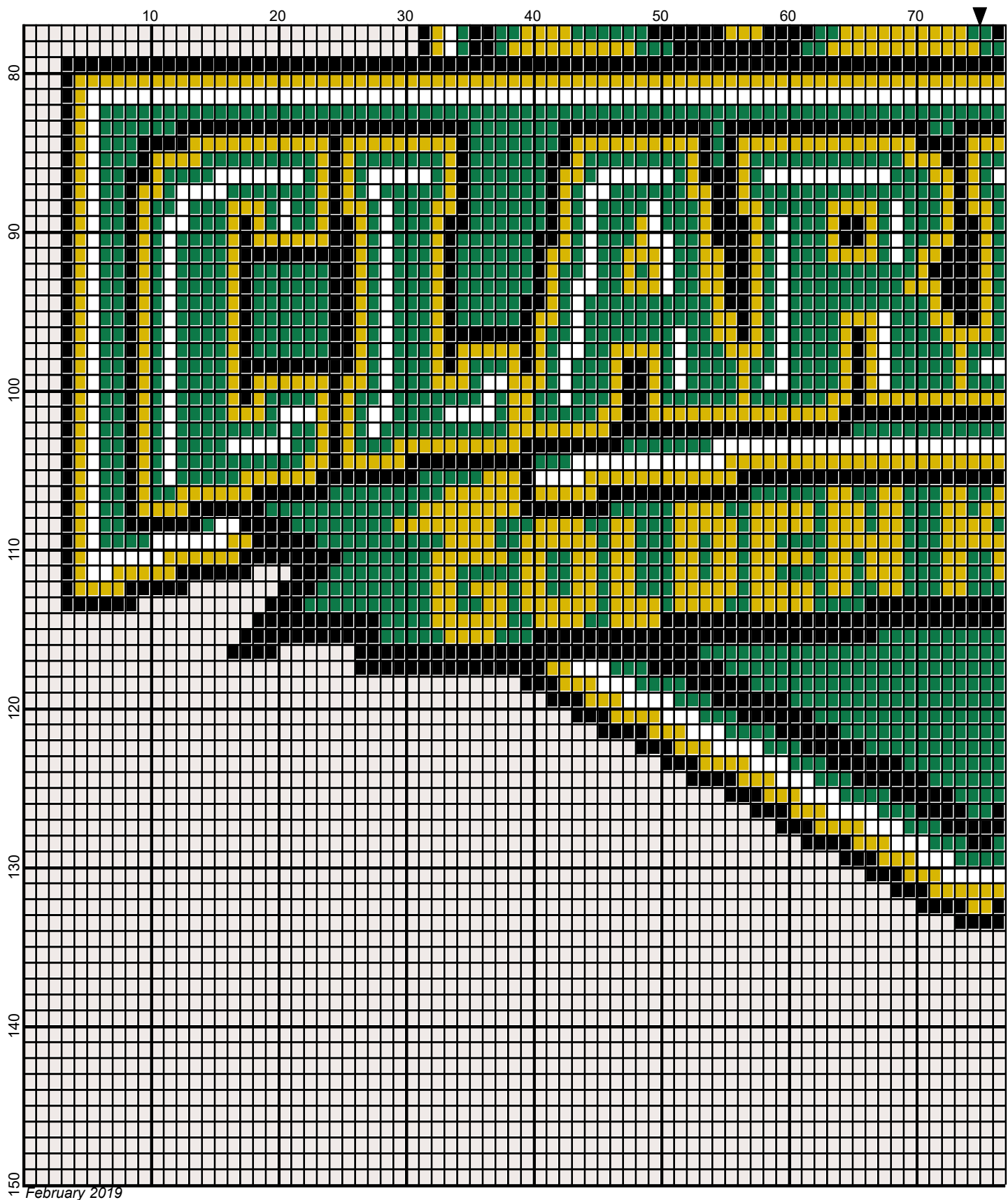


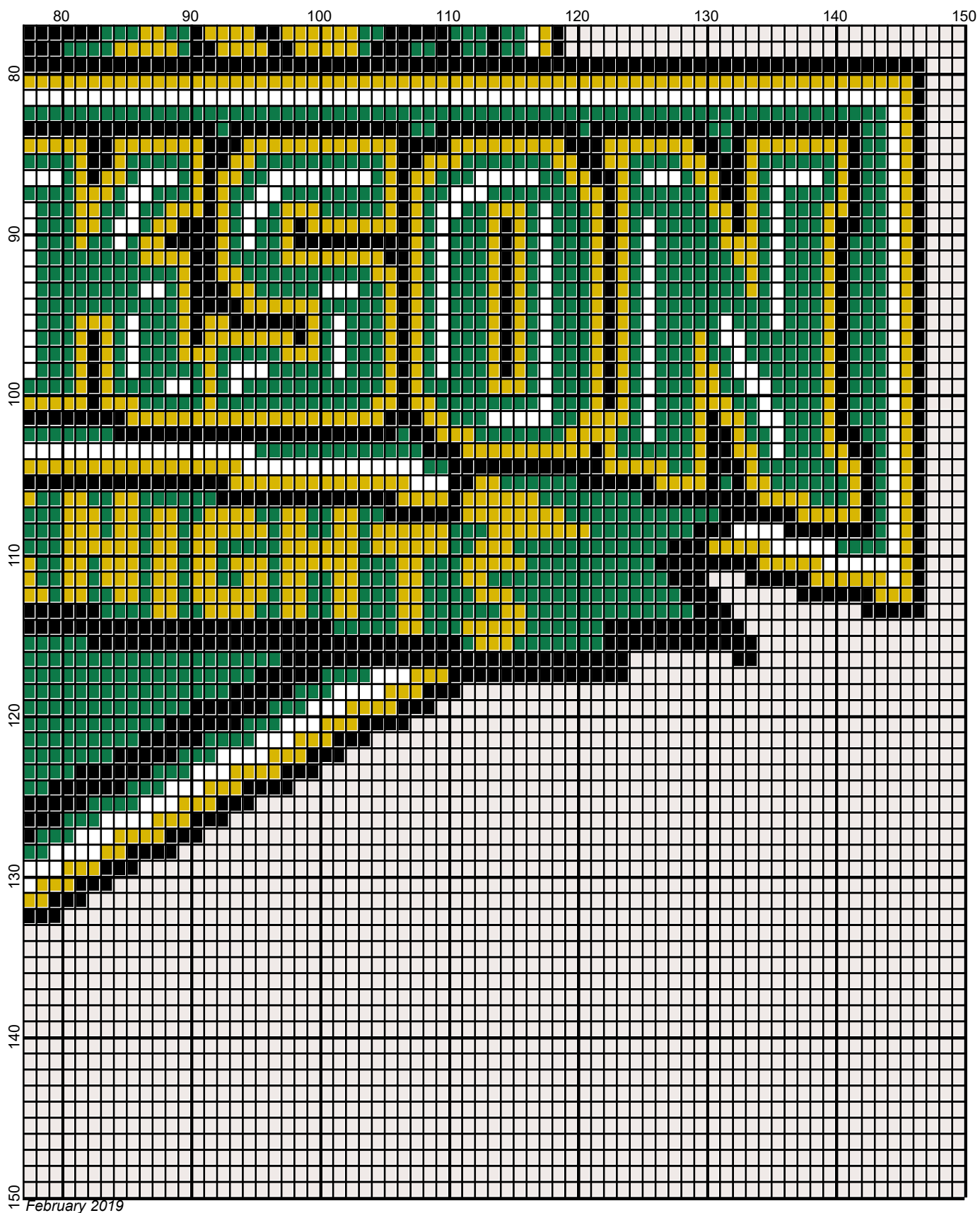
February 2019



February 2019





February 2019






clarkson_golden_knights

Author: Donna Hammell
Copyright: February 2019
Website: www.donnascrochetshoppe.com
Grid Size: 150W x 150H
Design Area: 15.00" x 18.75" (150 x 150 stitches)

Legend:

 [2] RHS 321 Gold
 [2] RHS 312 Black

 [2] RHS 368 Paddy Green
 [2] RHS 311 WHITE

 [2] RHS 313 Aran

Instructions for using the graph.

GAUGE= 5 STS = 1"
4 ROWS = 1"

I USED SIZE "H" AFGHAN HOOK,USE WHATEVER SIZE GIVES YOU THE CORRECT GAUGE. CAN BE DONE IN AFGHAN STITCH OR SINGLE CROCHET.

EACH SQUARE ON THE GRAPH REPRESENTS 1 STITCH. FOR SINGLE CROCHET READ THE CHART FROM RIGHT TO LEFT, AND THEN LEFT TO RIGHT. IF USING AFGHAN STITCH ALWAYS READ FROM THE RIGHT.

TO START: CHAIN ONE MORE STITCH THAN GRAPH.

ESTIMATED YARN NEEDED:

BLACK ; 4 OUNCES
GREEN: 6 OUNCES
BACKGROUND:18 OUNCES
GOLD: 4 OUNCES
WHITE: 2 OUNCES