

Legend:

■ RHS-312 ■ RHS-390 □ RHS-316

black_widow_spider_160x160

Author: Donna Hammell
Copyright: September 2025
Website: www.donnascrochetshoppe.com
Grid Size: 160W x 180H
Design Area: 16.00" x 22.50" (160 x 180 stitches)

Legend:

■ [2] RHS 312 Black ■ [2] RHS 390 Hot Red □ [2] RHS 316 Soft White

Instructions for using the graph.

GAUGE= 5 STS = 1"
4 ROWS = 1"

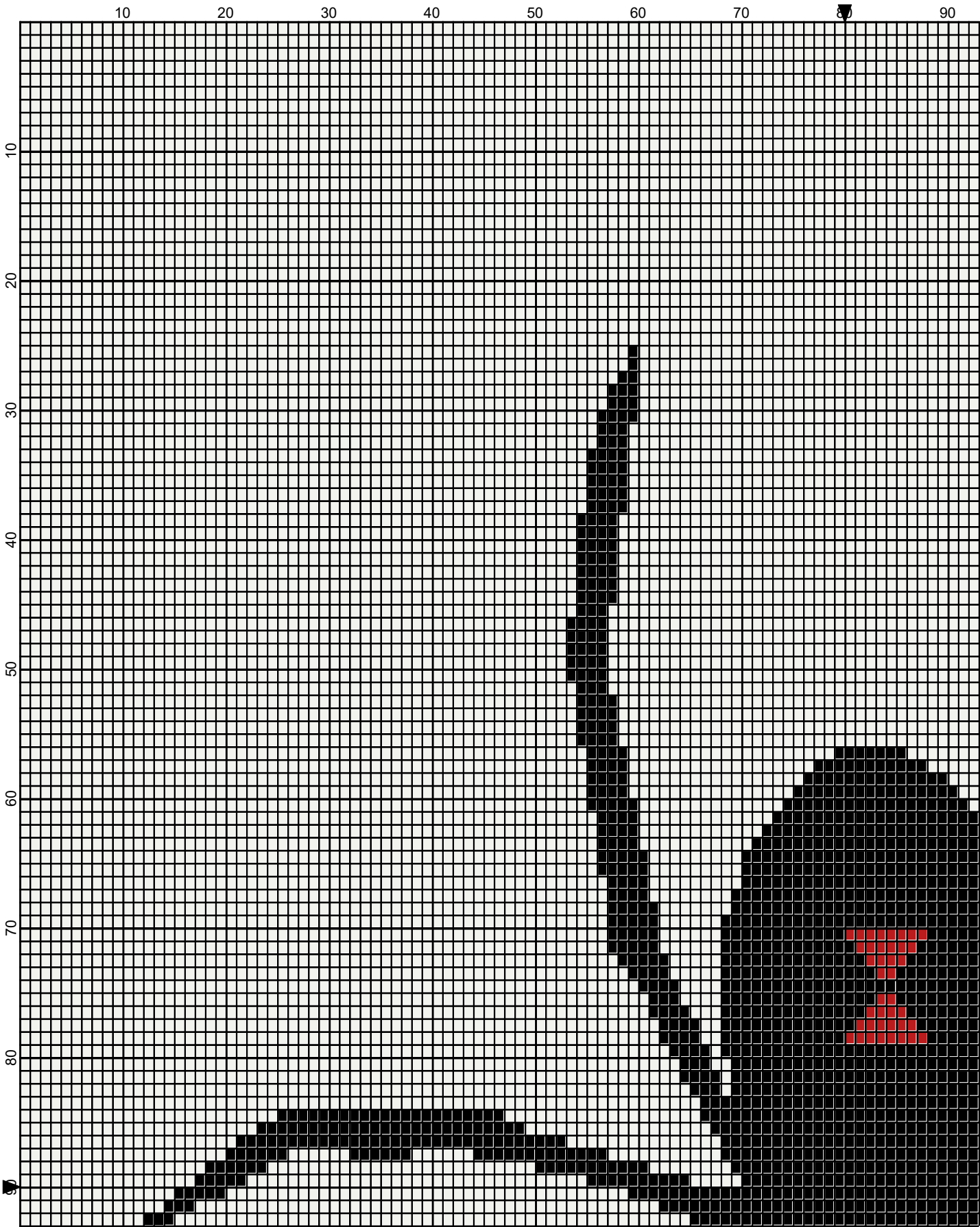
I USED SIZE "H" AFGHAN HOOK,USE WHATEVER SIZE GIVES YOU THE CORRECT GAUGE. CAN BE DONE IN AFGHAN STITCH OR SINGLE CROCHET.

EACH SQUARE ON THE GRAPH REPRESENTS 1 STITCH. FOR SINGLE CROCHET READ THE CHART FROM RIGHT TO LEFT, AND THEN LEFT TO RIGHT. IF USING AFGHAN STITCH ALWAYS READ FROM THE RIGHT.

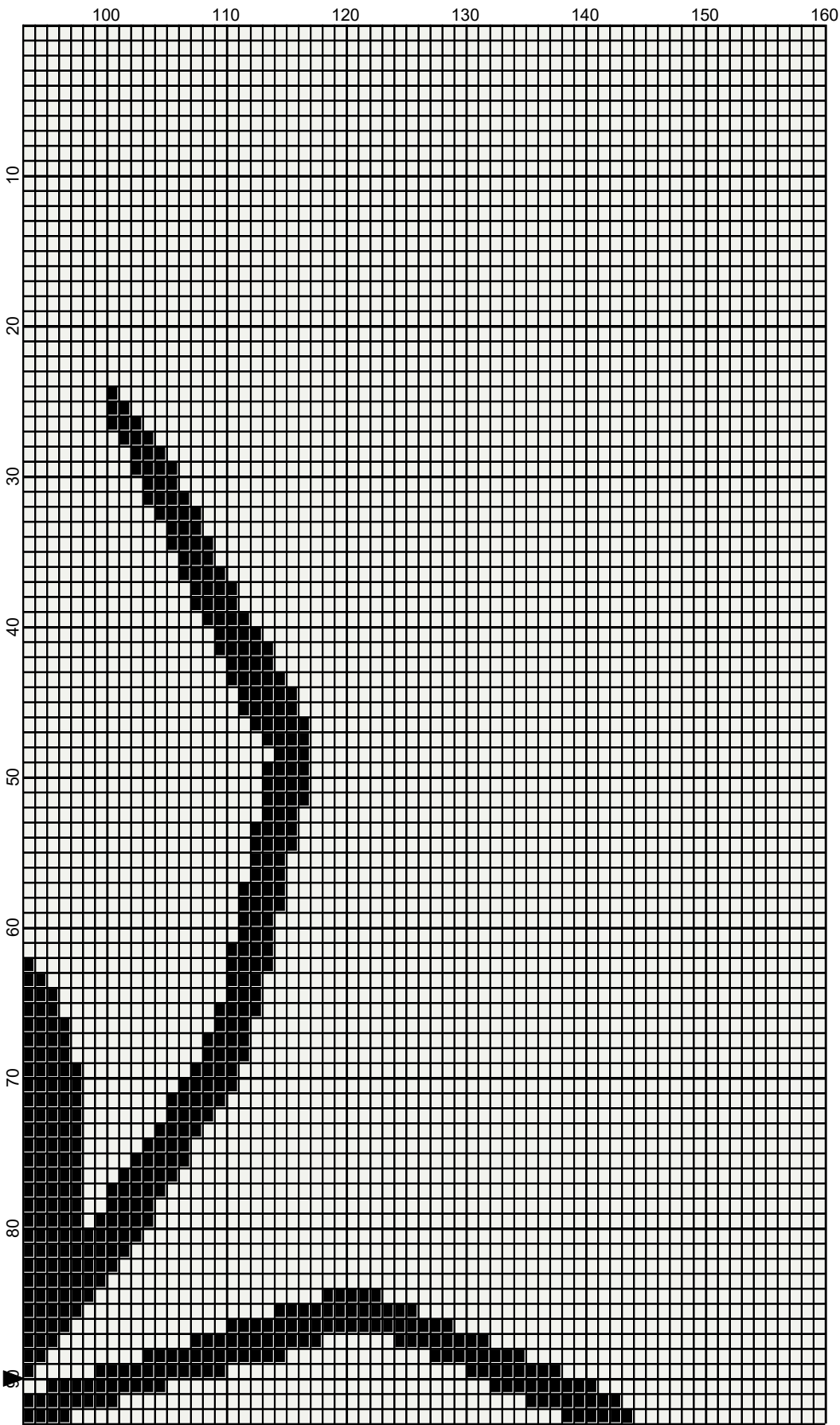
TO START: CHAIN ONE MORE STITCH THAN GRAPH.

YOU WILL NEED TO ADD STITCHES TO MAKE THE PIECE WIDER, AND ADD ROWS TO MAKE IT LONGER. THE DESIGN IS CENTERED, SO ADD STITCHES EVENLY TO BOTH SIDES.

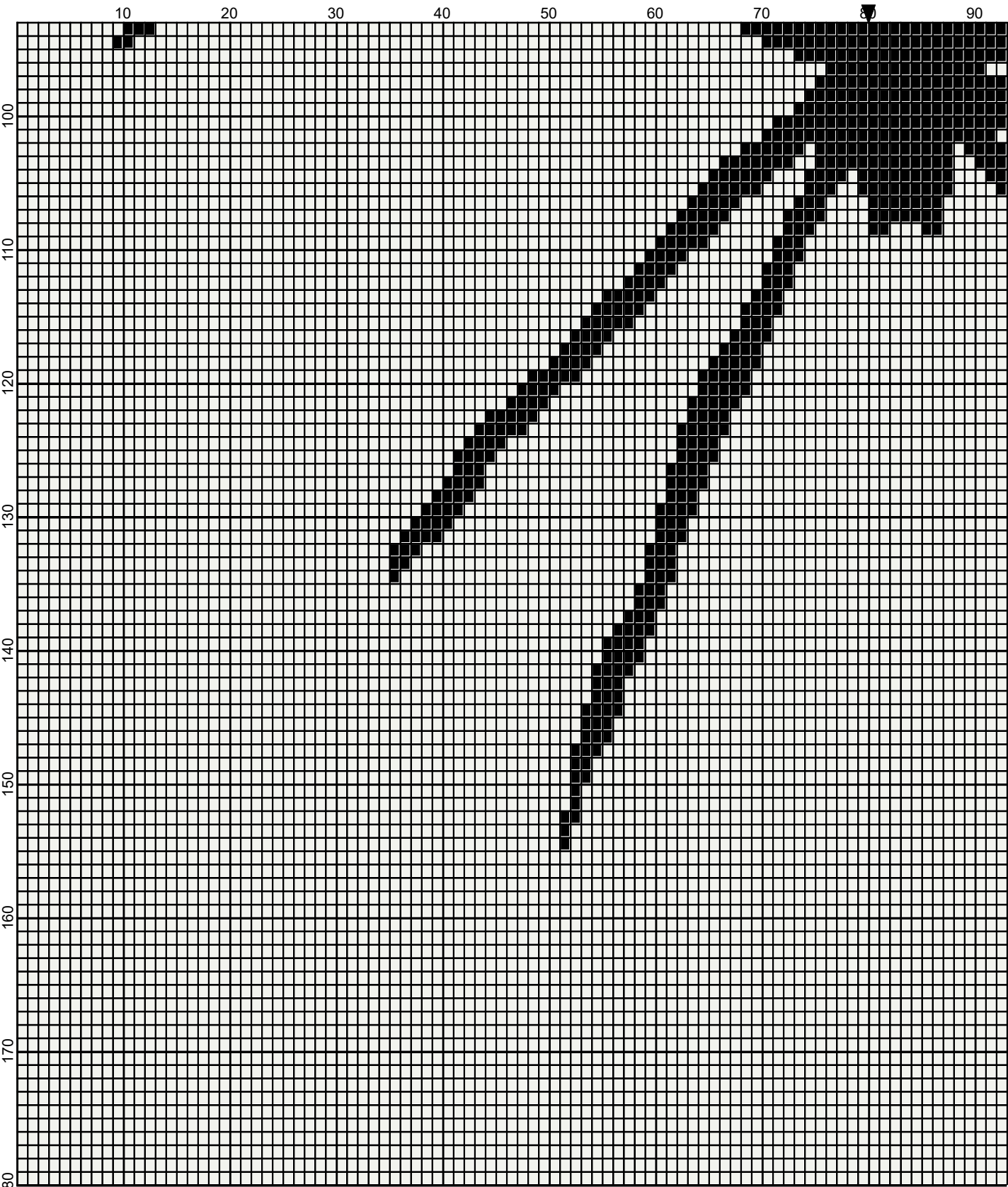
ESTIMATED YARN NEEDED:
BLACK 4 OUNCE/169 YDS
WHITE:34 OUNCES/1709 YDS
HOT RED:SMALL AMT/8 YDS



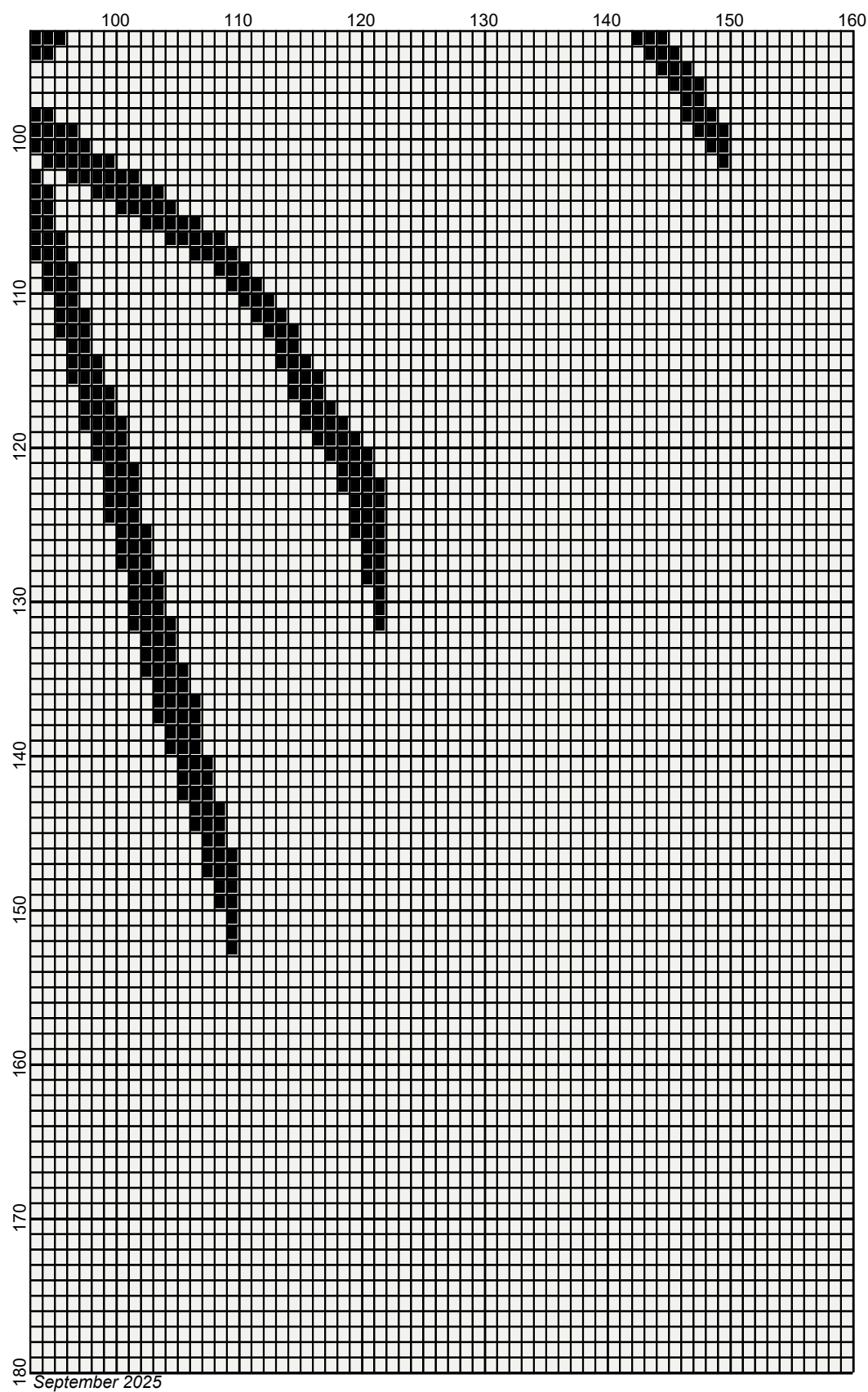
September 2025



September 2025



Legend:



■ RHS-312 ■ RHS-390 □ RHS-316