



Legend:

■ RHS-312

■ RHS-RHS E300

□ RHS-316

# billy\_joel\_150x200

---

**Author:** Donna Hammell  
**Copyright:** January 2025  
**Website:** [www.donnascrochetshoppe.com](http://www.donnascrochetshoppe.com)  
**Grid Size:** 150W x 200H  
**Design Area:** 15.00" x 25.00" (150 x 200 stitches)

## Legend:

■ [2] RHS      312 Black      ■ [2] RHS      RHS E300 Dusty Gray      □ [2] RHS      316 Soft White

Instructions for using the graph.

GAUGE= 5 STS = 1"  
4 ROWS = 1"

I USED SIZE "H" AFGHAN HOOK,USE WHATEVER SIZE GIVES YOU THE CORRECT GAUGE. CAN BE DONE IN AFGHAN STITCH OR SINGLE CROCHET.

EACH SQUARE ON THE GRAPH REPRESENTS 1 STITCH. FOR SINGLE CROCHET READ THE CHART FROM RIGHT TO LEFT, AND THEN LEFT TO RIGHT. IF USING AFGHAN STITCH ALWAYS READ FROM THE RIGHT.

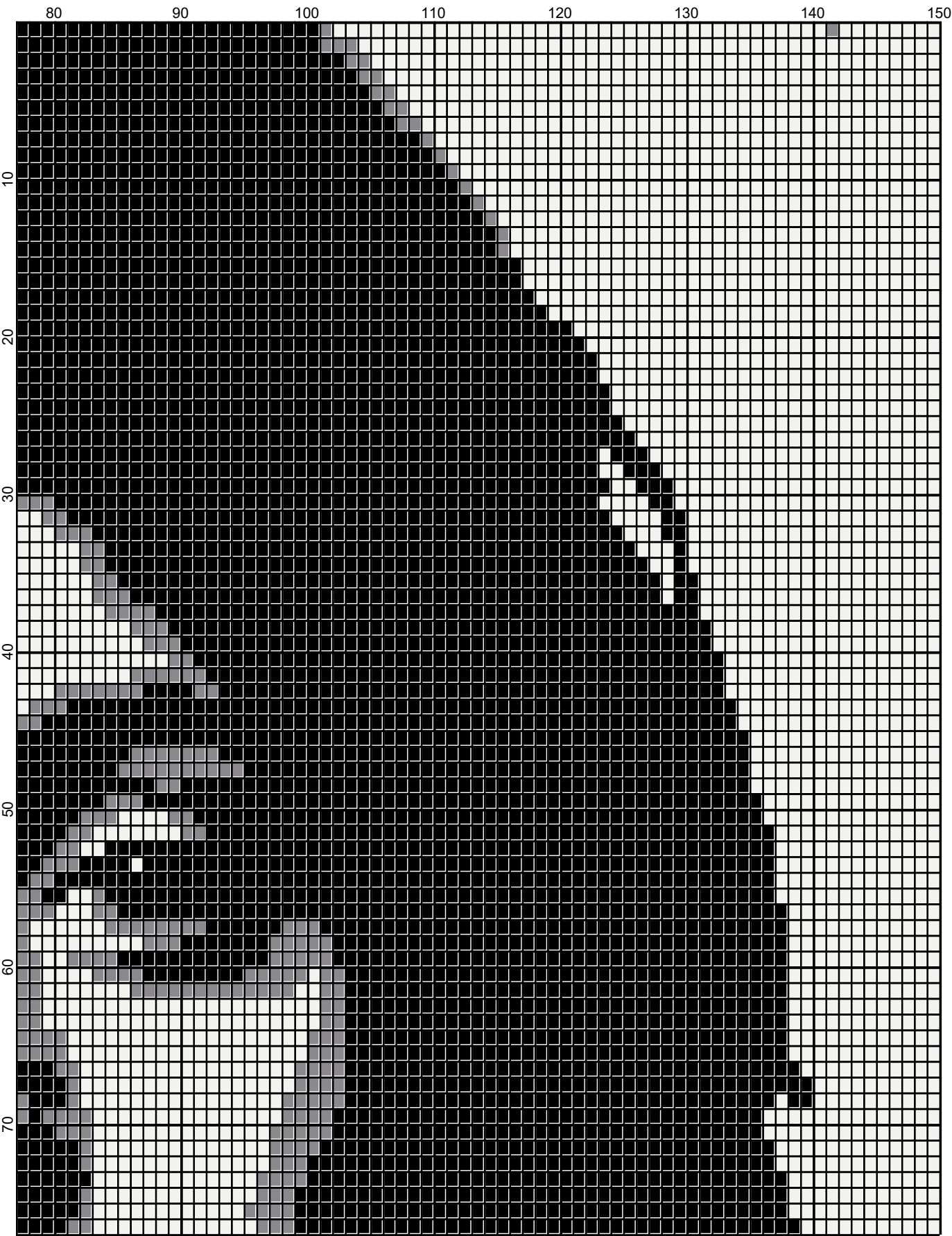
TO START: CHAIN ONE MORE STITCH THAN GRAPH.

IF YOU NEED TO MAKE THE PIECE WIDER ADD AN EVEN NUMBER OF STITCHES TO BOTH SIDES, AND ADD ROWS TO MAKE IT LONGER. THE DESIGN IS CENTERED, SO ADD STITCHES EVENLY TO BOTH SIDES.

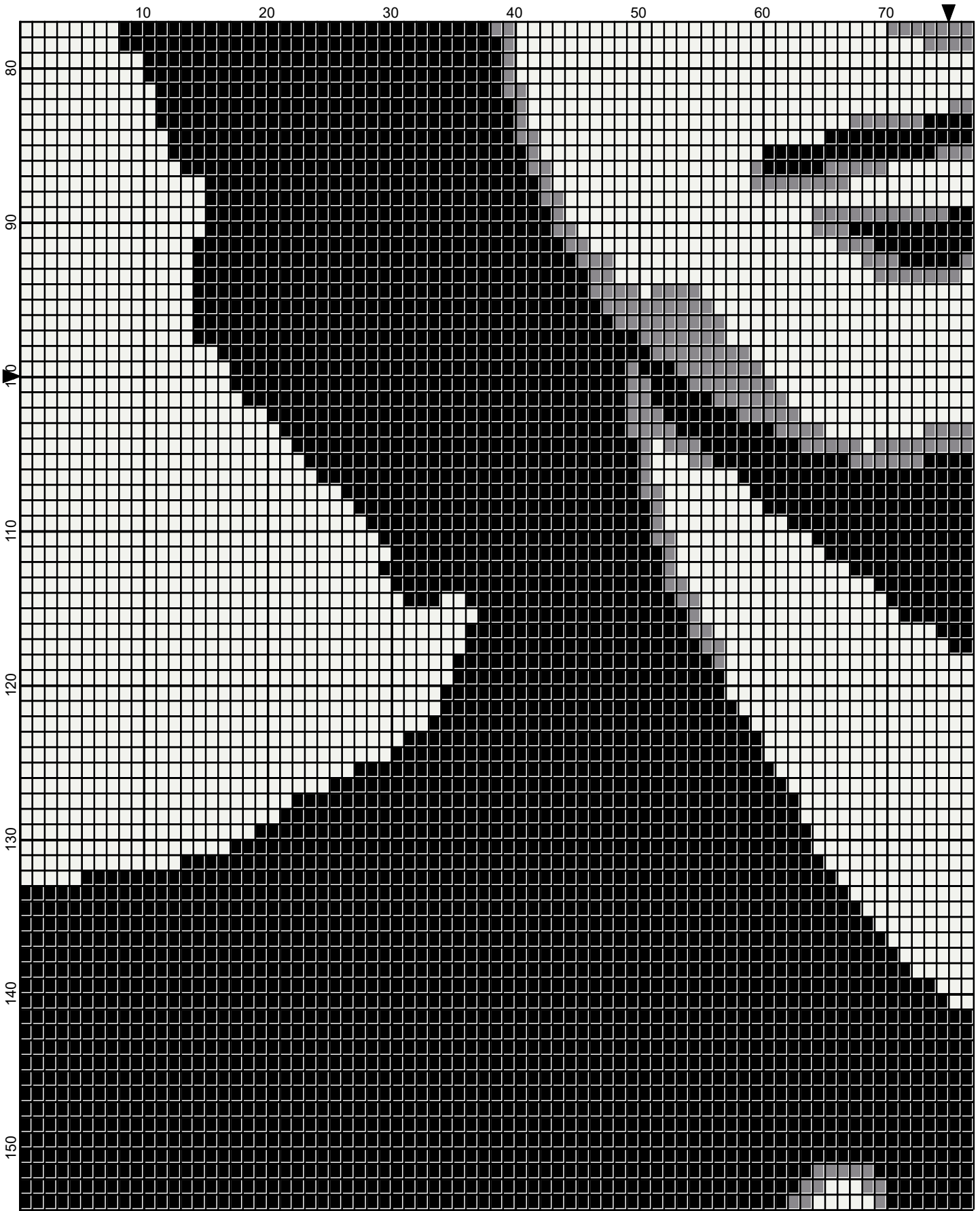
ESTIMATED YARN NEEDED:  
SOFT WHITE:14 OUNCES/640 YDS  
DUSTY GRAY:2 OUNCES/85 YDS  
BLACK: 26 OUNCES/1235 YDS



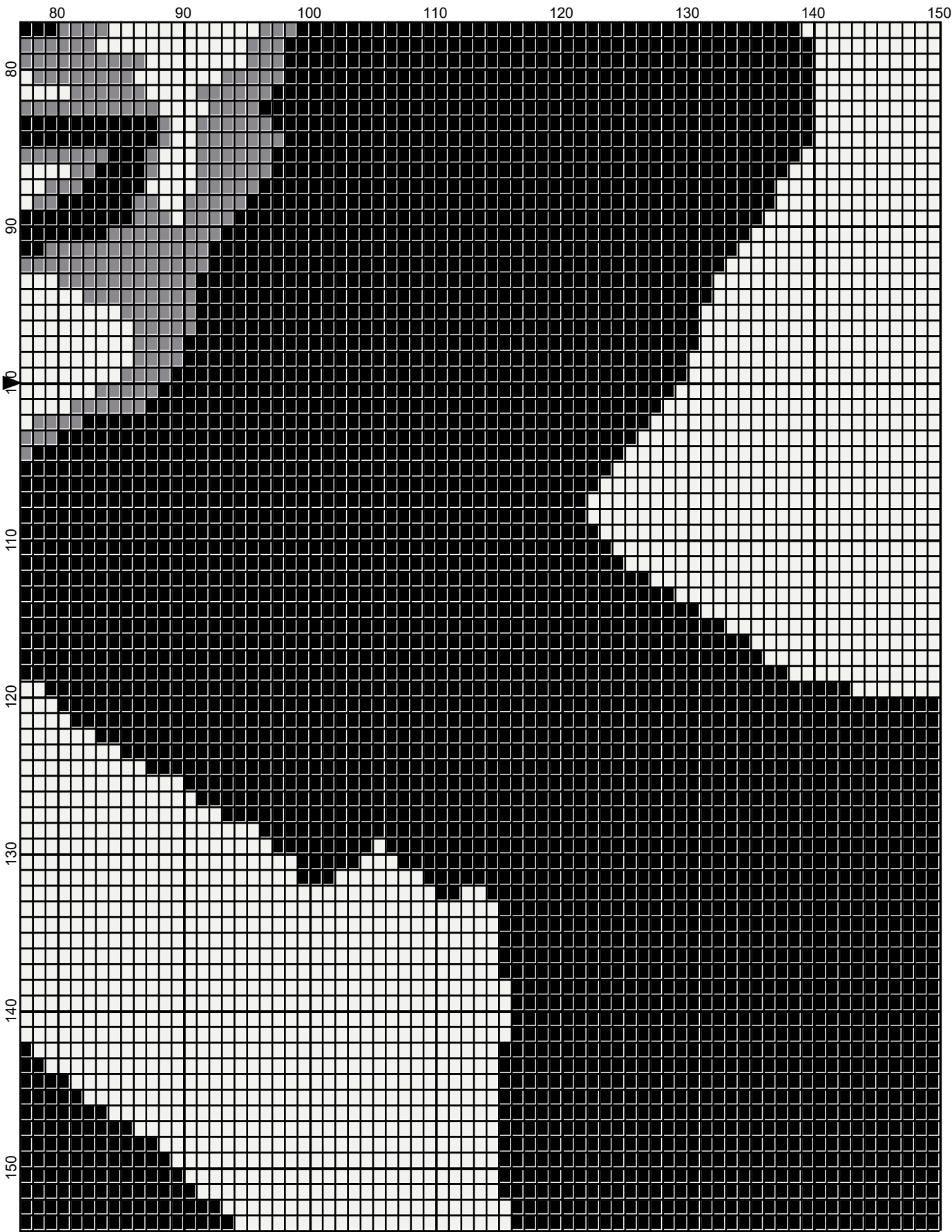
January 2025



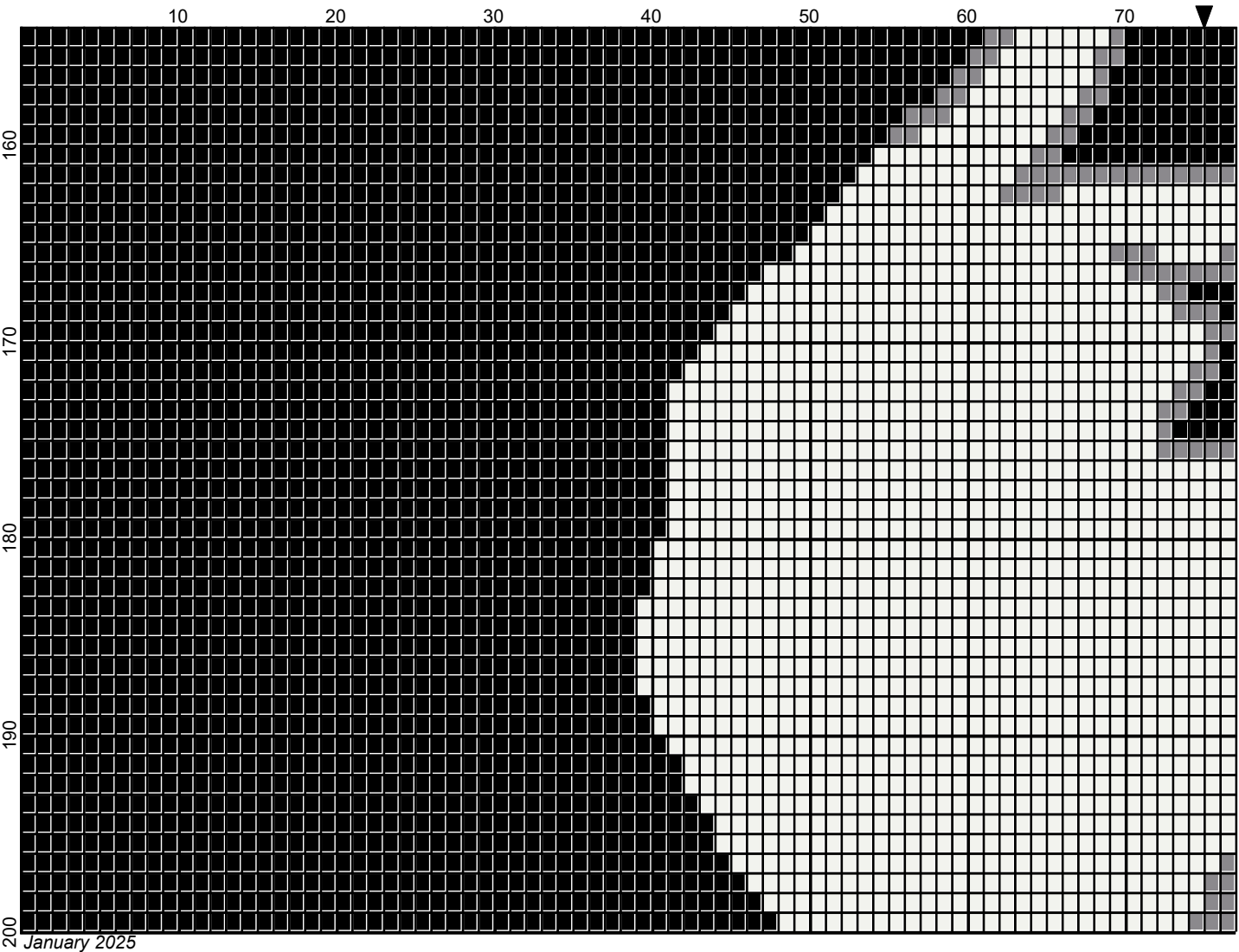
January 2025



January 2025



January 2025



Legend:

