

Legend:

- RHS-312
- RHS-RHS E300
- RHS-341
- RHS-3901
- RHS-316

alabama_elephant_gray_160x180

Author: Donna Hammell
Copyright: October 2025
Website: www.donnascrochetshoppe.com
Grid Size: 160W x 180H
Design Area: 16.00" x 22.50" (160 x 180 stitches)

Legend:

 [2] RHS	312 Black	 [2] RHS	341 Light Gray	 [2] RHS	316 Soft White
 [2] RHS	RHS E300 Dusty Gray	 [2] RHS	3901 Rouge		

Instructions for using the graph.

GAUGE= 5 STS = 1"
4 ROWS = 1"

I USED SIZE "H" AFGHAN HOOK,USE WHATEVER SIZE GIVES YOU THE CORRECT GAUGE. CAN BE DONE IN AFGHAN STITCH OR SINGLE CROCHET.

EACH SQUARE ON THE GRAPH REPRESENTS 1 STITCH. FOR SINGLE CROCHET READ THE CHART FROM RIGHT TO LEFT, AND THEN LEFT TO RIGHT. IF USING AFGHAN STITCH ALWAYS READ FROM THE RIGHT.

TO START: CHAIN ONE MORE STITCH THAN GRAPH.

YOU WILL NEED TO ADD STITCHES TO MAKE THE PIECE WIDER, AND ADD ROWS TO MAKE IT LONGER. THE DESIGN IS CENTERED, SO ADD STITCHES EVENLY TO BOTH SIDES.

ESTIMATED RED HEART YARN NEEDED:

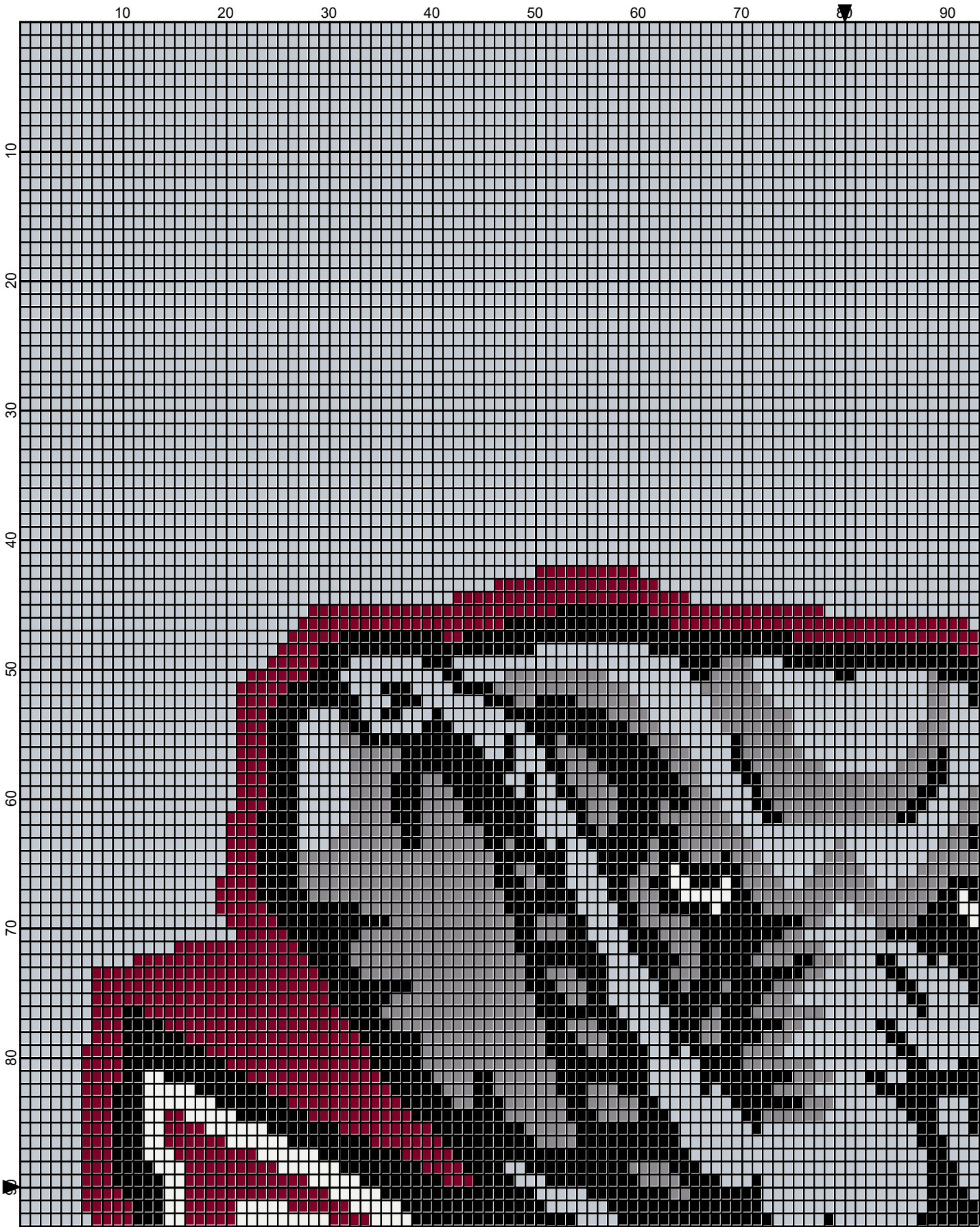
BLACK:6 OUNCES/263 YDS

WHITE: 2 OUNCES/103 YDS

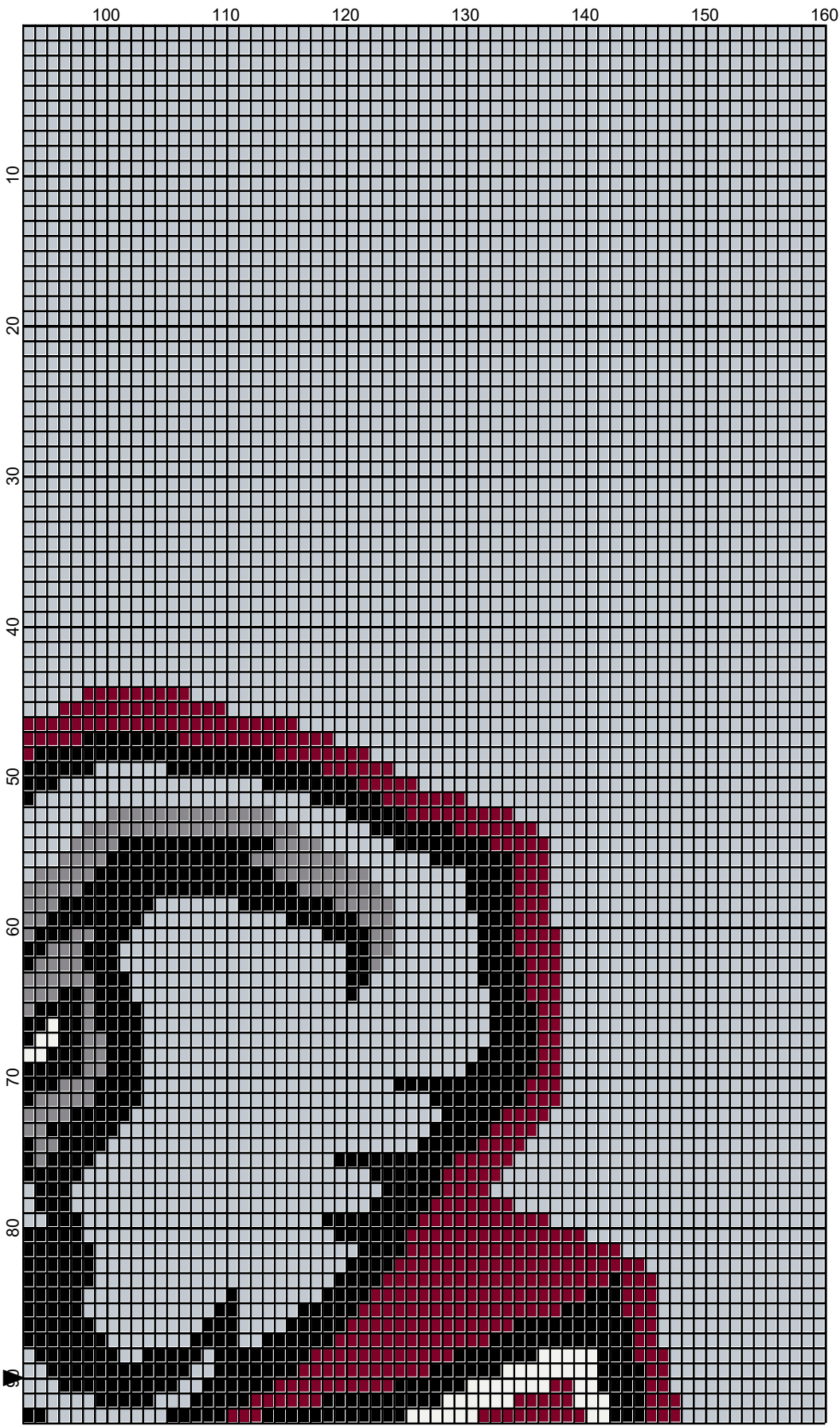
DUSTY GRAY:2 OUNCES/69 YDS

LT GRAY:24 OUNCES/1227YDS

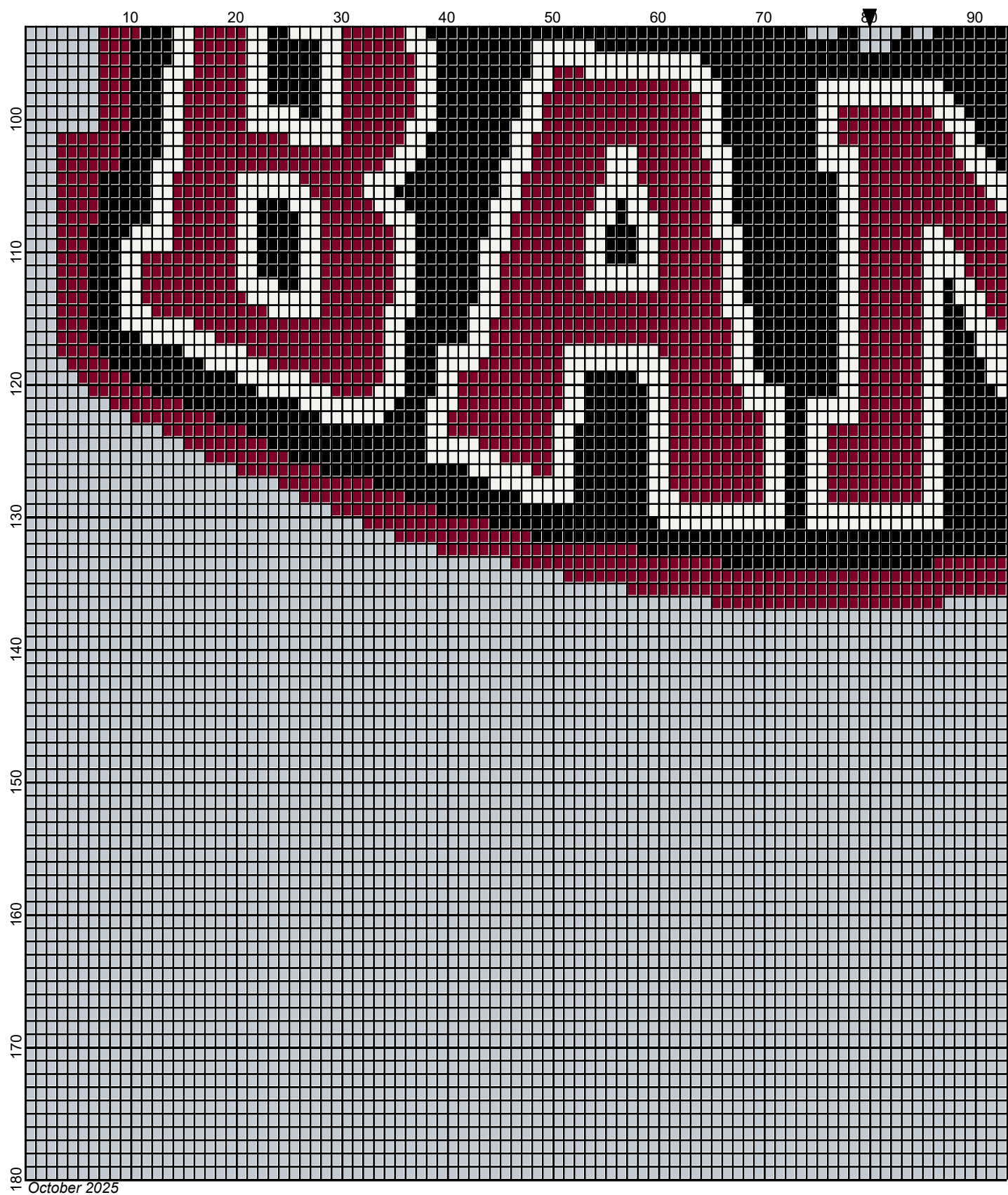
ROUGE:6 OUNCES/236 YDS



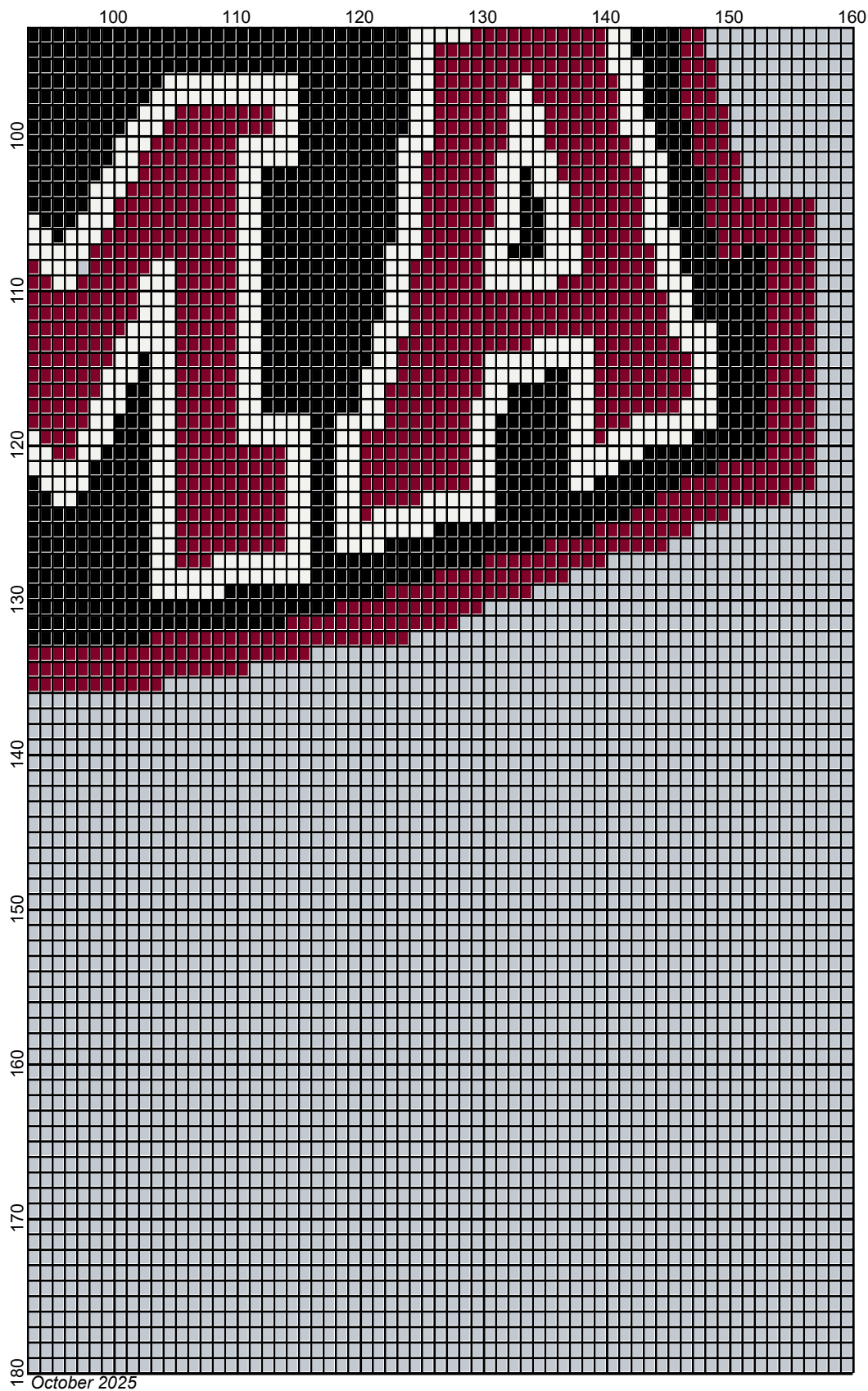
October 2025



October 2025



Legend:



■ RHS-312

■ RHS-RHS E300

■ RHS-341

■ RHS-3901

■ RHS-316